

National Electricity Transmission System Status Report

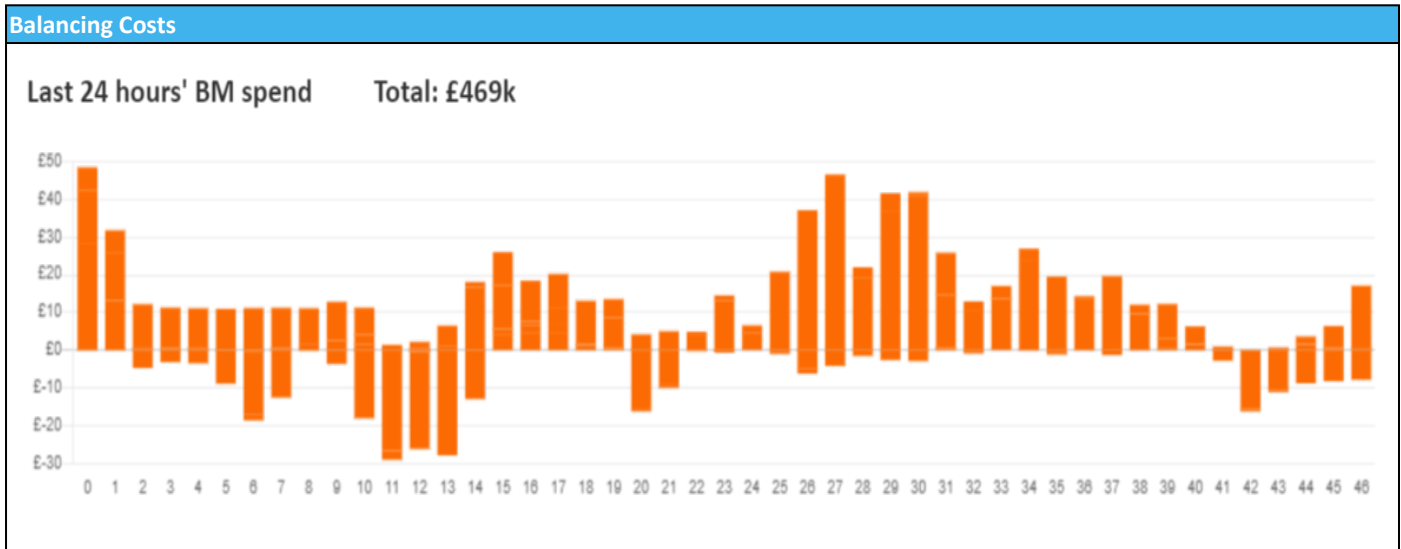


nationalgridESO

National Electricity Transmission System Status Report
Saturday 17 February 2024

Today's High Level Risk Status Forecast for the next 24h			
General Status		Voltage	
Demand		System Inertia	
System Margins		Weather	
Generation		Transmission	
Active Constraints			
System Warning			

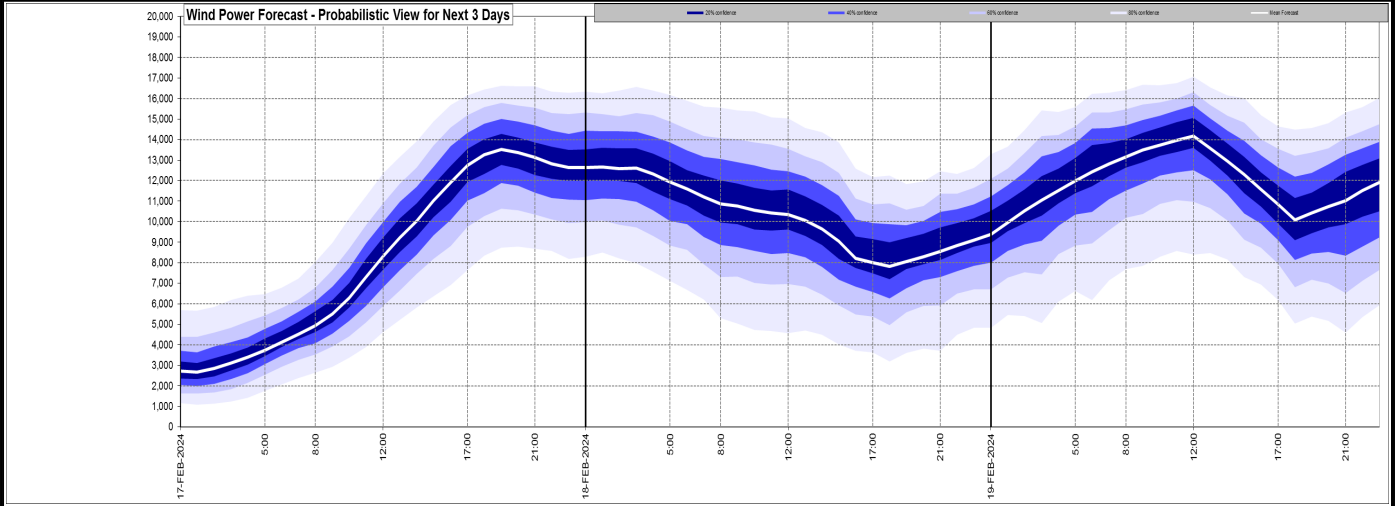
Today's Minimum De-Rated Margin	12150.17 (SP 2)	
Current BMU Largest Loss Risk	Generation	1500 MW
	Demand	1150 MW



Yesterday's Market Summary	
Cash Out Price (Max)	£ 101.50 (SP 28)
Cash Out Price (Min)	£ 40.10 (SP 13)
Peak Demand Yesterday	37,884 MW
Minimum Demand	20,800MW

Interconnector Net Transfer Capacity (MWs)			
Today	Import	Export	Remarks
Netherlands (BritNed)	1000	1000	Fully Available
France (IFA)	2000	2000	Fully Available
Belgium (Nemo)	1000	1000	Fully Available
Ireland (EWIC)	500	500	Fully Available
France (ElecLink)	1000	1000	Fully Available
Northern Ireland (MOYLE)	500	500	Fully Available
Norway (NSL)	1400	1400	Fully Available
France (IFA2)	0	0	Unavailable
Viking Link	1430	1430	Fully Available

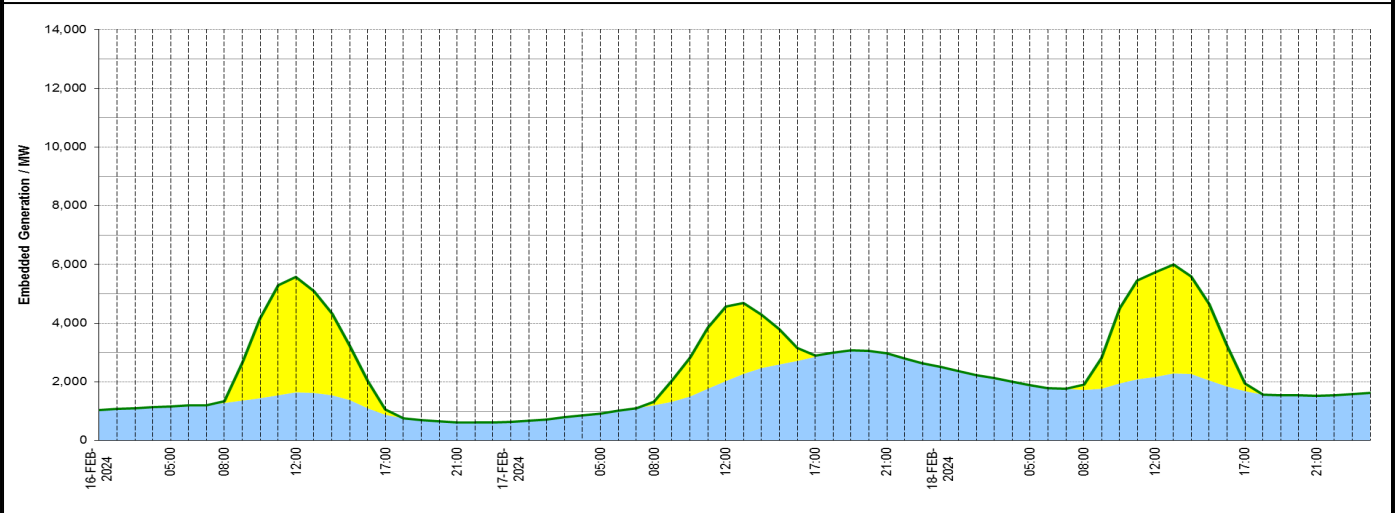
Wind Power Forecast



Expected embedded generation (MWs)

Embedded Generation Forecast

	16-FEB-2024					17-FEB-2024					18-FEB-2024						
	05:00	08:00	12:00	17:00	21:00	00:00	05:00	08:00	12:00	17:00	21:00	00:00	05:00	08:00	12:00	17:00	21:00
Solar (MW)	0	64	3943	180	0	0	0	129	2544	42	0	0	0	173	3561	252	0
Wind (MW)	1162	1281	1639	886	626	647	930	1201	2023	2857	2971	2508	1885	1731	2181	1696	1527
STOR (MW)	0	0	0	0	0	0	0	0	0	0	0	0	0	0	0	0	0
Total (MW)	1162	1345	5582	1066	626	647	930	1330	4567	2899	2971	2508	1885	1904	5742	1948	1527



Weather	Source	Commentary
Latest forecast (Summary)	Met Office SEPA Natural Resources Wales	<p>Today: A largely dry day to start with some mist and fog patches though a few spots of drizzle. Turning unsettled from the west through the afternoon with a band of rain, heavy at times, pushing eastwards. Remaining mild and breezier</p> <p>Tonight: Outbreaks of rain and drizzle continuing to push eastwards, turning heavy at times. Rain gradually clearing much of the country by dawn, though lingering in the southeast. Another mild night.</p>
General Weather Concerns e.g. wind, rain, snow, flooding, GB Weather Warnings	Met Office Weather Warnings SEPA Natural Resources Wales	<p>UK Weather Warnings Yellow warning of rain Areas affected: East Midlands East of England London & South East England North East England North West England South West England Wales West Midlands Yorkshire & Humber</p> <p>Starts: 15:00 GMT on Sat 17 February Ends: 18:00 GMT on Sun 18 February</p> <p>Flood Warnings 09 flood warnings and 109 flood alerts issued for England. 0 flood warnings and 0 flood alerts issued for Scotland. 0 flood warnings and 1 flood alerts issued for Wales</p>

Further Information	
BM Reports	https://www.bmreports.com
System Balancing Reports	https://www.nationalgrideso.com/industry-information/industry-data-and-reports/system-balancing-reports
Forecast Volumes and Costs	https://www.nationalgrideso.com/industry-information/industry-data-and-reports/forecast-volumes-and-costs