

# National Electricity Transmission System Status Report

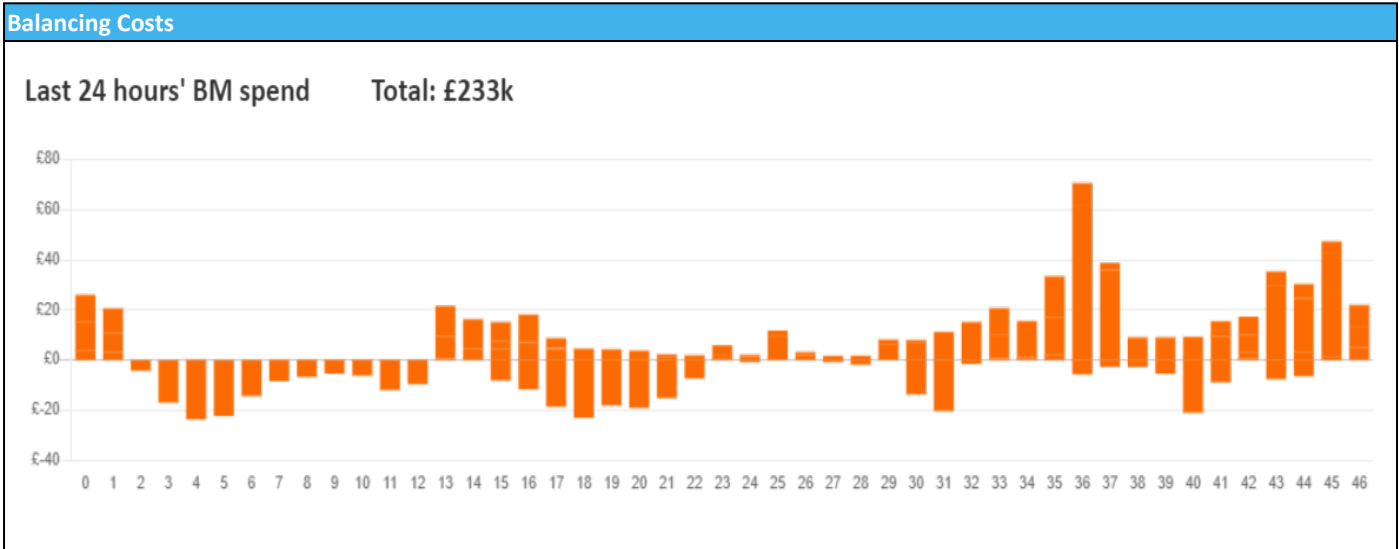


nationalgridESO

**National Electricity Transmission System Status Report**  
Monday 12 February 2024

Today's High Level Risk Status Forecast for the next 24h			
General Status		Voltage	
Demand		System Inertia	
System Margins		Weather	
Generation		Transmission	
Active Constraints			
<a href="#">System Warning</a>			

<a href="#">Today's Minimum De-Rated Margin</a>	12469.89 (SP 36)	
Current BMU Largest Loss Risk	Generation	1500 MW
	Demand	560 MW



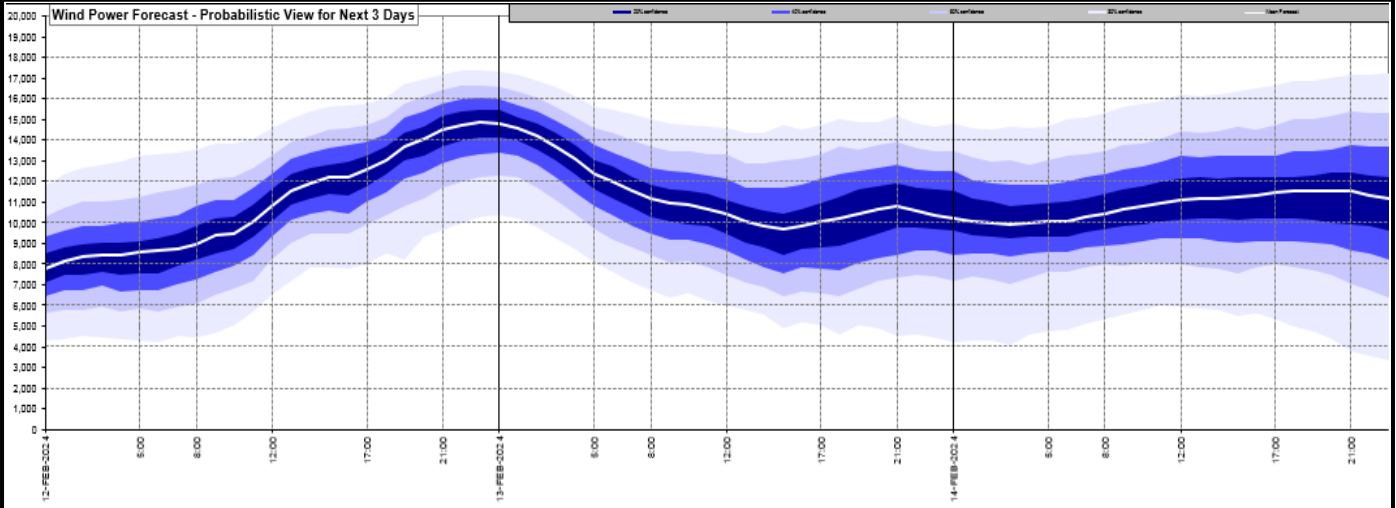
**Yesterday's Market Summary**

<a href="#">Cash Out Price (Max)</a>	£ 144(SP 45,46)
<a href="#">Cash Out Price (Min)</a>	£-50 (SP 29)
<a href="#">Peak Demand Yesterday</a>	38,092 MW
Minimum Demand	21,535 MW

**Interconnector Net Transfer Capacity (MWs)**

Today	Import	Export	Remarks
Netherlands (BritNed)	1000	1000	Fully Available
France (IFA)	2000	2000	Fully Available
Belgium (Nemo)	1000	1000	Fully Available
Ireland (EWIC)	500	500	Fully Available
France (ElecLink)	1000	1000	Fully Available
Northern Ireland (MOYLE)	500	500	Fully Available
Norway (NSL)	1400	1400	Fully Available
France (IFA2)	0	0	Unavailable
Viking Link	1430	1430	Fully Available

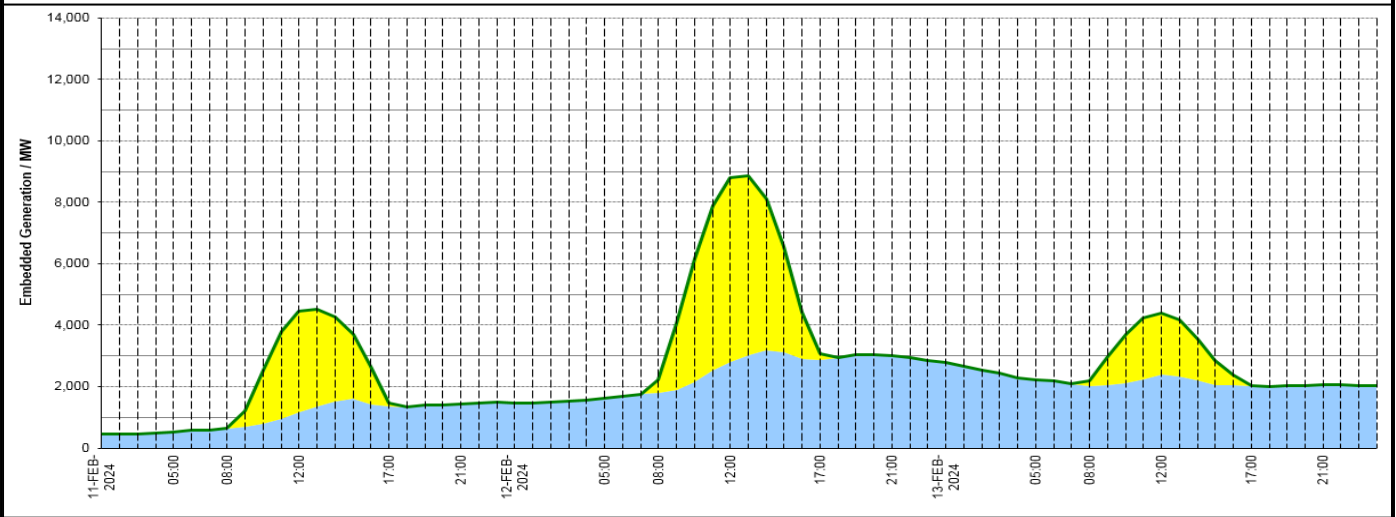
**Wind Power Forecast**



**Expected embedded generation (MWs)**

**Embedded Generation Forecast**

Embedded Generation Estimates															Last run: 12-Feb-2024 04:32:23			
	11-FEB-2024					12-FEB-2024					13-FEB-2024							
	05:00	08:00	12:00	17:00	21:00	00:00	05:00	08:00	12:00	17:00	21:00	00:00	05:00	08:00	12:00	17:00	21:00	
Solar (MW)	0	7	3281	128	0	0	0	409	6001	218	0	0	0	176	1985	18	0	
Wind (MW)	523	633	1166	1342	1438	1450	1611	1802	2804	2866	3007	2796	2211	2029	2409	2029	2060	
STOR (MW)	0	0	0	0	0	0	0	0	0	0	0	0	0	0	0	0	0	
<b>Total (MW)</b>	<b>523</b>	<b>640</b>	<b>4447</b>	<b>1470</b>	<b>1438</b>	<b>1450</b>	<b>1611</b>	<b>2211</b>	<b>8805</b>	<b>3084</b>	<b>3007</b>	<b>2796</b>	<b>2211</b>	<b>2205</b>	<b>4394</b>	<b>2047</b>	<b>2060</b>	



Weather	Source	Commentary
Latest forecast (Summary)	<a href="#">Met Office</a> <a href="#">SEPA</a> <a href="#">Natural Resources Wales</a>	<b>Today:</b> A day of sunny spells and showers, the showers most widespread in the northwest, where they will be blustery, and could turn wintry over some hills. Further south and east any early showers will fade, leaving it mostly fine. <b>Tonight:</b> Clear spells and showers. Showers remaining heaviest, most widespread and blustery in the northwest, with snow on high ground. Patchy frost and ice. Rain arriving in the far southwest later.
General Weather Concerns e.g. wind, rain, snow, flooding, GB Weather Warnings	<a href="#">Met Office</a> <a href="#">Weather Warnings</a> <a href="#">SEPA</a> <a href="#">Natural Resources Wales</a>	<b>UK Weather Warnings</b> Yellow warning of ice Areas affected: Northern Ireland <b>Flood Warnings</b> 83 flood warnings and 236 flood alerts issued for England.  19 flood warnings and 10 flood alerts issued for Scotland.  3 flood warnings and 10 flood alerts issued for Wales

Contains public sector information licensed under the Open Government Licence v1.0

Further Information	
BM Reports	<a href="https://www.bmreports.com">https://www.bmreports.com</a>
System Balancing Reports	<a href="https://www.nationalgrideso.com/industry-information/industry-data-and-reports/system-balancing-reports">https://www.nationalgrideso.com/industry-information/industry-data-and-reports/system-balancing-reports</a>
Forecast Volumes and Costs	<a href="https://www.nationalgrideso.com/industry-information/industry-data-and-reports/forecast-volumes-and-costs">https://www.nationalgrideso.com/industry-information/industry-data-and-reports/forecast-volumes-and-costs</a>