

**National Electricity  
Transmission System Status Report**

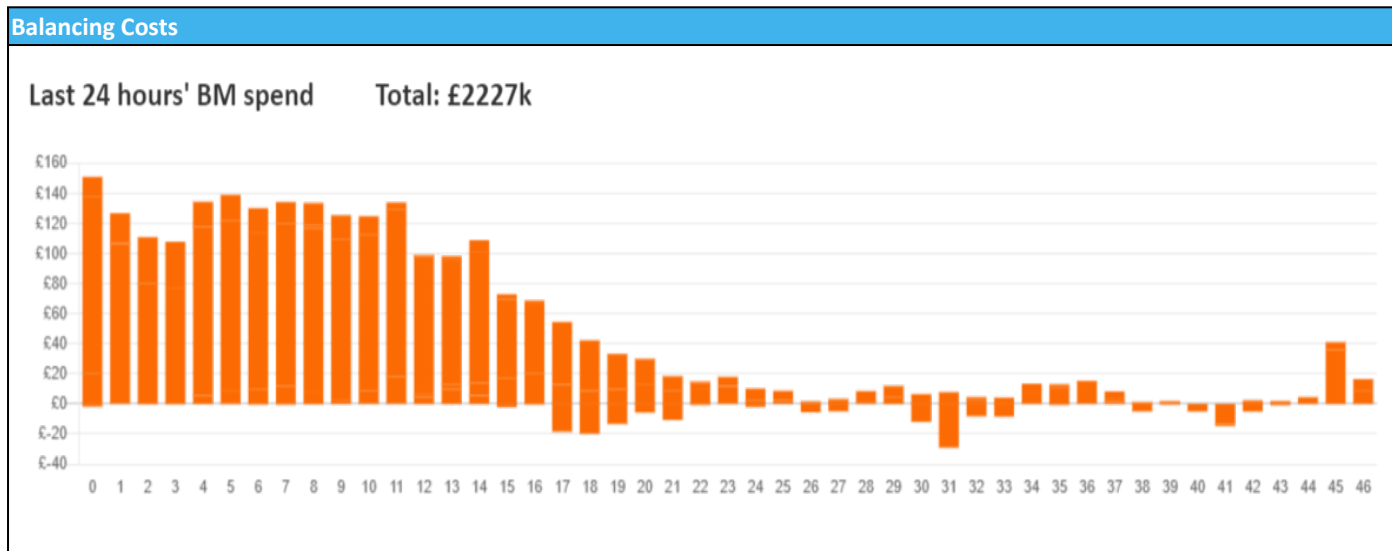


national**grid**ESO

**National Electricity Transmission System Status Report**  
Sunday 11 February 2024

Today's High Level Risk Status Forecast for the next 24h			
General Status		Voltage	
Demand		System Inertia	
System Margins		Weather	
Generation		Transmission	
Active Constraints			
<a href="#">System Warning</a>			

<a href="#">Today's Minimum De-Rated Margin</a>	10213.59 (SP 36)	
Current BMU Largest Loss Risk	Generation	1500 MW
	Demand	560 MW



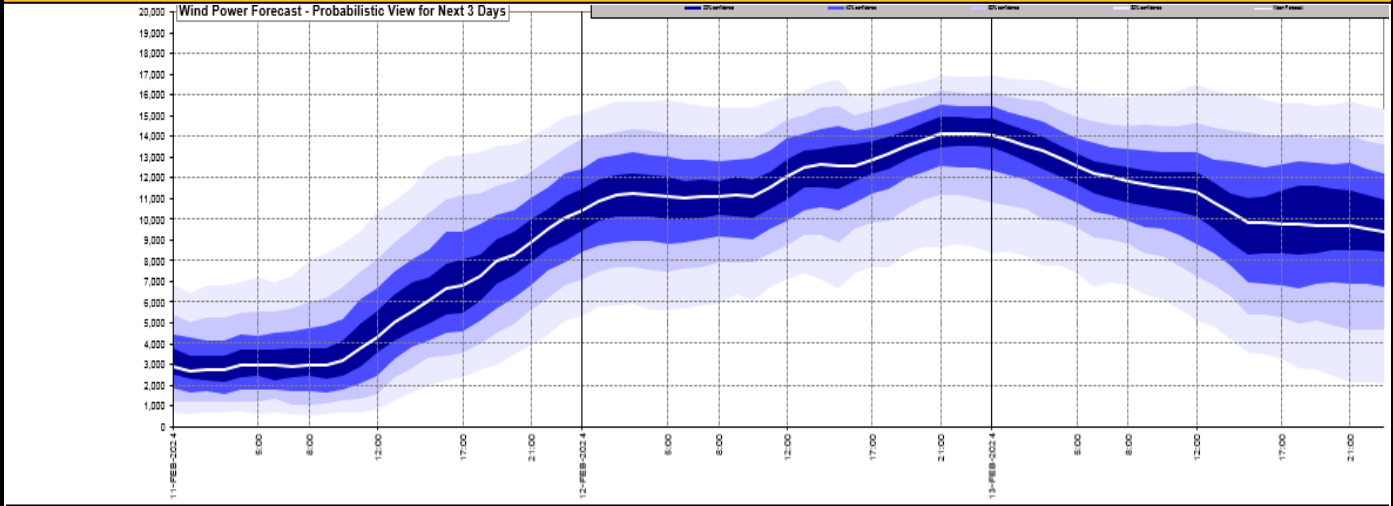
**Yesterday's Market Summary**

<a href="#">Cash Out Price (Max)</a>	£ 109.5(SP 36)
<a href="#">Cash Out Price (Min)</a>	£45 (SP 4, 5)
<a href="#">Peak Demand Yesterday</a>	37,888 MW
Minimum Demand	21,841 MW

**Interconnector Net Transfer Capacity (MWs)**

Today	Import	Export	Remarks
Netherlands (BritNed)	1000	1000	Fully Available
France (IFA)	2000	2000	Fully Available
Belgium (Nemo)	1000	1000	Fully Available
Ireland (EWIC)	500	500	Fully Available
France (ElecLink)	1000	1000	Fully Available
Northern Ireland (MOYLE)	500	500	Fully Available
Norway (NSL)	1400	1400	Fully Available
France (IFA2)	0	0	Unavailable
Viking Link	1430	1430	Fully Available

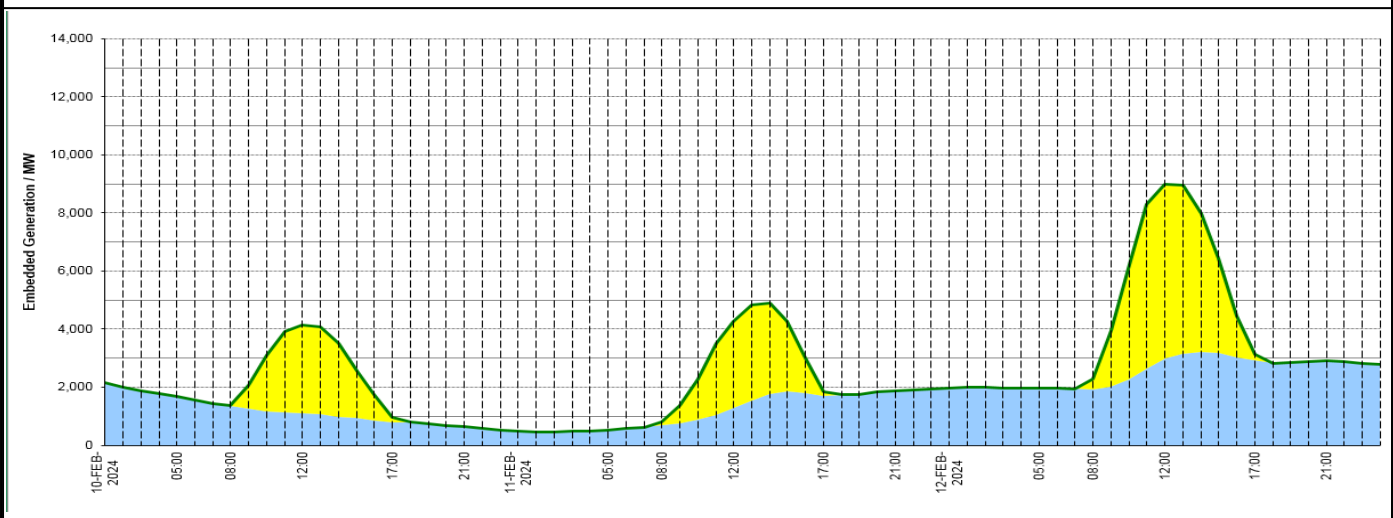
### Wind Power Forecast



### Expected embedded generation (MWs)

#### Embedded Generation Forecast

Embedded Generation Estimates															Last run: 11-Feb-2024 04:32:42		
	10-FEB-2024					11-FEB-2024					12-FEB-2024						
	05:00	08:00	12:00	17:00	21:00	00:00	05:00	08:00	12:00	17:00	21:00	00:00	05:00	08:00	12:00	17:00	21:00
Solar (MW)	0	14	3042	149	0	0	0	109	2993	131	0	0	0	341	6012	228	0
Wind (MW)	1679	1346	1110	804	638	488	526	687	1287	1709	1865	1957	1964	1931	2978	2918	2910
STOR (MW)	0	0	0	0	0	0	0	0	0	0	0	0	0	0	0	0	0
<b>Total (MW)</b>	<b>1679</b>	<b>1360</b>	<b>4152</b>	<b>953</b>	<b>638</b>	<b>488</b>	<b>526</b>	<b>796</b>	<b>4280</b>	<b>1840</b>	<b>1865</b>	<b>1957</b>	<b>1964</b>	<b>2272</b>	<b>8990</b>	<b>3146</b>	<b>2910</b>



Weather	Source	Commentary
Latest forecast (Summary)	<a href="#">Met Office</a> <a href="#">SEPA</a> <a href="#">Natural Resources Wales</a>	<p><b>Today:</b> Outbreaks of rain will affect some eastern parts of Scotland, and for a time the east of England. Otherwise early fog patches clearing to leave bright or sunny spells and some showers, which could turn wintry on high ground later.</p> <p><b>Tonight:</b> Showers will affect many western areas overnight, locally wintry on hills, with some more persistent rain across the Northern Isles. Clear spells elsewhere. Breezy, with patches of frost and ice.</p>
General Weather Concerns e.g. wind, rain, snow, flooding, GB Weather Warnings	<a href="#">Met Office</a> <a href="#">Weather Warnings</a> <a href="#">SEPA</a> <a href="#">Natural Resources Wales</a>	<p><b>UK Weather Warnings</b> Yellow warning of rain Areas affected: South West England</p> <p>Yellow warning of rain Areas affected: East Midlands   East of England   North East England   Yorkshire &amp; Humber</p> <p><b>Flood Warnings</b> 84 flood warnings and 262 flood alerts issued for England.</p>

Weather	Source	Commentary
		16 flood warnings and 10 flood alerts issued for Scotland.  2 flood warnings and 10 flood alerts issued for Wales

*Contains public sector information licensed under the Open Government Licence v1.0*

Further Information	
BM Reports	<a href="https://www.bmreports.com">https://www.bmreports.com</a>
System Balancing Reports	<a href="https://www.nationalgrideso.com/industry-information/industry-data-and-reports/system-balancing-reports">https://www.nationalgrideso.com/industry-information/industry-data-and-reports/system-balancing-reports</a>
Forecast Volumes and Costs	<a href="https://www.nationalgrideso.com/industry-information/industry-data-and-reports/forecast-volumes-and-costs">https://www.nationalgrideso.com/industry-information/industry-data-and-reports/forecast-volumes-and-costs</a>