

# National Electricity Transmission System Status Report

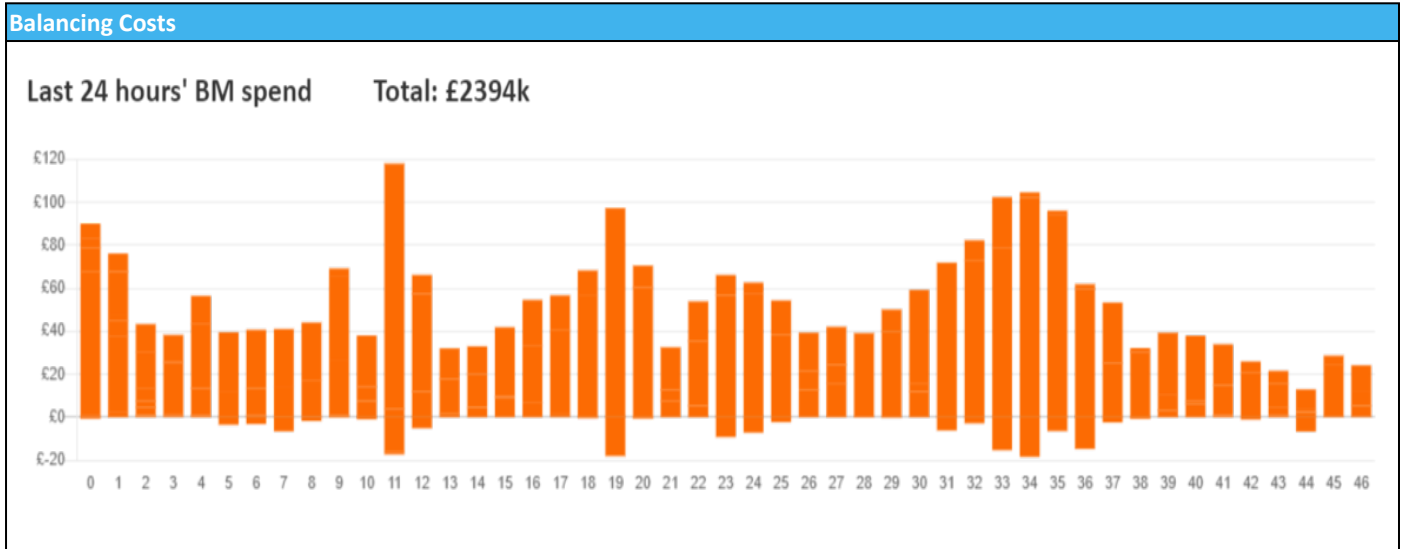


nationalgridESO

**National Electricity Transmission System Status Report**  
Tuesday 30 January 2024

Today's High Level Risk Status Forecast for the next 24h			
General Status		Voltage	
Demand		System Inertia	
System Margins		Weather	
Generation		Transmission	
Active Constraints			
<a href="#">System Warning</a>			

<a href="#">Today's Minimum De-Rated Margin</a>	6957.64 (SP 36)	
Current BMU Largest Loss Risk	Generation	1500 MW
	Demand	560 MW



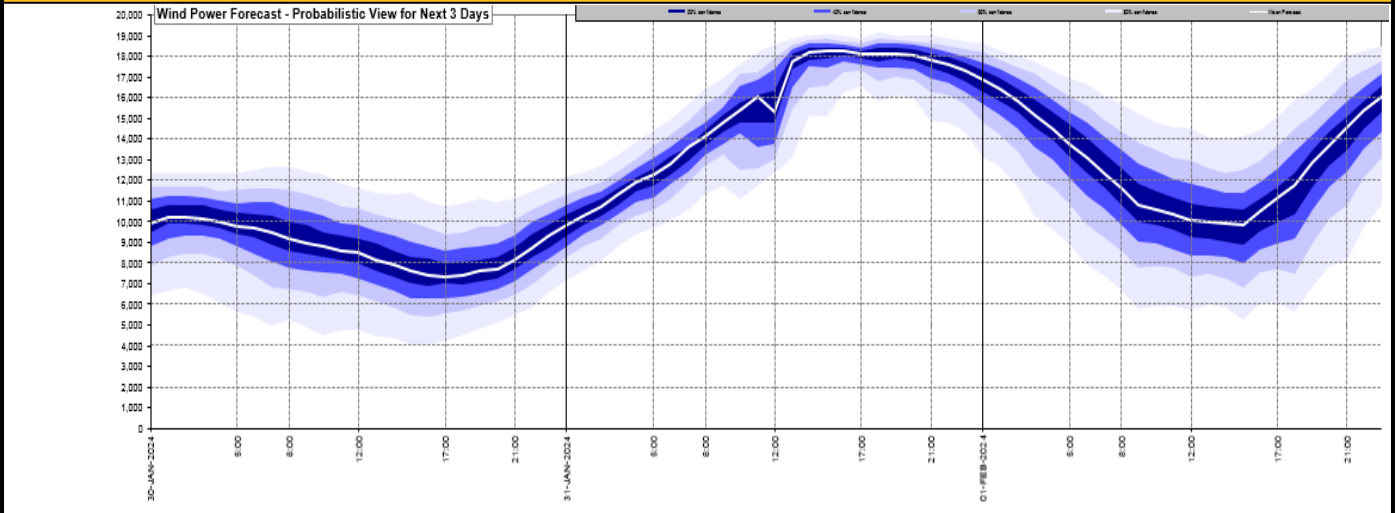
**Yesterday's Market Summary**

<a href="#">Cash Out Price (Max)</a>	£ 145 (SP 13)
<a href="#">Cash Out Price (Min)</a>	£21 (SP 12)
<a href="#">Peak Demand Yesterday</a>	41,539 MW
Minimum Demand	21,996 MW

**Interconnector**  
Net Transfer Capacity (MWs)

Today	Import	Export	Remarks
Netherlands (BritNed)	508	508	Partially Available
France (IFA)	2000	2000	Fully Available
Belgium (Nemo)	1000	1000	Fully Available
Ireland (EWIC)	500	500	Fully Available
France (ElecLink)	1000	1000	Fully Available
Northern Ireland (MOYLE)	500	500	Fully Available
Norway (NSL)	1400	1400	Fully Available
France (IFA2)	0	0	Unavailable
Viking Link	1456	1456	Fully Available

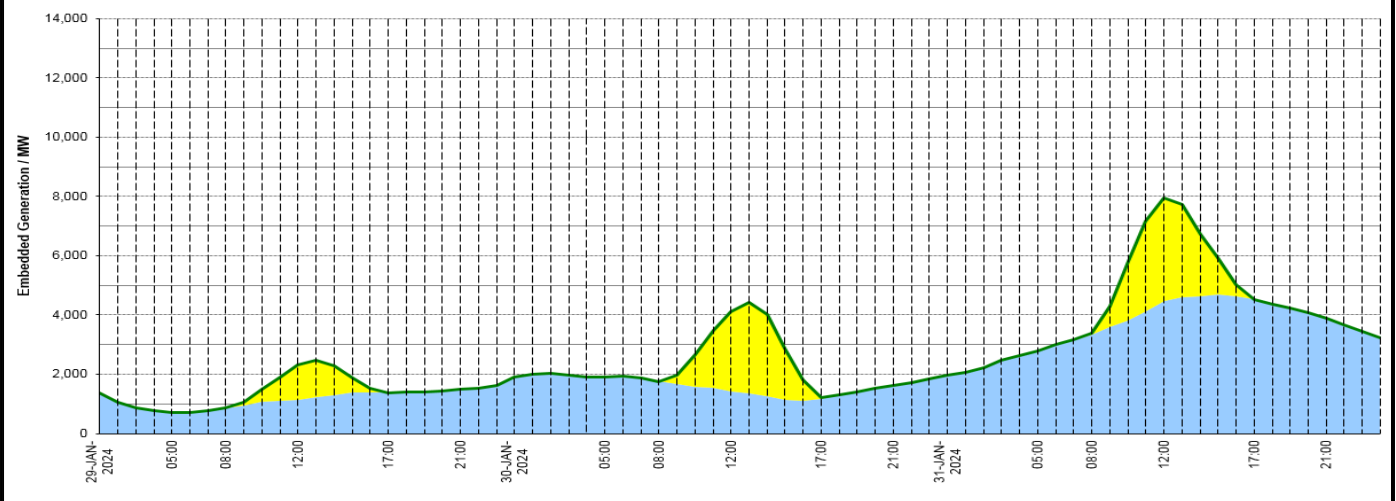
### Wind Power Forecast



### Expected embedded generation (MWs)

#### Embedded Generation Forecast

Embedded Generation Estimates																	Last run: 30-Jan-2024 04:33:13
	29-JAN-2024					30-JAN-2024					31-JAN-2024						
	05:00	08:00	12:00	17:00	21:00	00:00	05:00	08:00	12:00	17:00	21:00	00:00	05:00	08:00	12:00	17:00	21:00
Solar (MW)	0	0	1176	0	0	0	0	0	2688	26	0	0	0	46	3458	0	0
Wind (MW)	719	854	1144	1377	1489	1912	1918	1755	1434	1178	1621	1983	2792	3335	4486	4521	3883
STOR (MW)	0	0	0	0	0	0	0	0	0	0	0	0	0	0	0	0	0
<b>Total (MW)</b>	<b>719</b>	<b>854</b>	<b>2320</b>	<b>1377</b>	<b>1489</b>	<b>1912</b>	<b>1918</b>	<b>1755</b>	<b>4122</b>	<b>1204</b>	<b>1621</b>	<b>1983</b>	<b>2792</b>	<b>3381</b>	<b>7944</b>	<b>4521</b>	<b>3883</b>



Weather	Source	Commentary
Latest forecast (Summary)	<a href="#">Met Office</a> <a href="#">SEPA</a> <a href="#">Natural Resources Wales</a>	<b>Today:</b> Skies will be cloudy in England and Wales in the morning, with outbreaks of drizzle in the southeast. Cloud will linger in southeast England during the afternoon, but elsewhere it will be a largely dry day with sunny spells. <b>Tonight:</b> Dry, clear and cold for many with a widespread frost. Fog patches may form in southeast England. Rain will spread into northwest Scotland later with strengthening winds in the north.
General Weather Concerns e.g. wind, rain, snow, flooding, GB Weather Warnings	<a href="#">Met Office</a> <a href="#">Weather Warnings</a> <a href="#">SEPA</a> <a href="#">Natural Resources Wales</a>	<b>UK Weather Warnings</b> No Warnings <b>Flood Warnings</b> 15 flood warnings and 72 flood alerts issued for England.  0 flood warnings and 0 flood alerts issued for Scotland.  0 flood warning and 6 flood alerts issued for Wales

Contains public sector information licensed under the Open Government Licence v1.0

Further Information	
BM Reports	<a href="https://www.bmreports.com">https://www.bmreports.com</a>
System Balancing Reports	<a href="https://www.nationalgrideso.com/industry-information/industry-data-and-reports/system-balancing-reports">https://www.nationalgrideso.com/industry-information/industry-data-and-reports/system-balancing-reports</a>
Forecast Volumes and Costs	<a href="https://www.nationalgrideso.com/industry-information/industry-data-and-reports/forecast-volumes-and-costs">https://www.nationalgrideso.com/industry-information/industry-data-and-reports/forecast-volumes-and-costs</a>