

National Electricity Transmission System Status Report

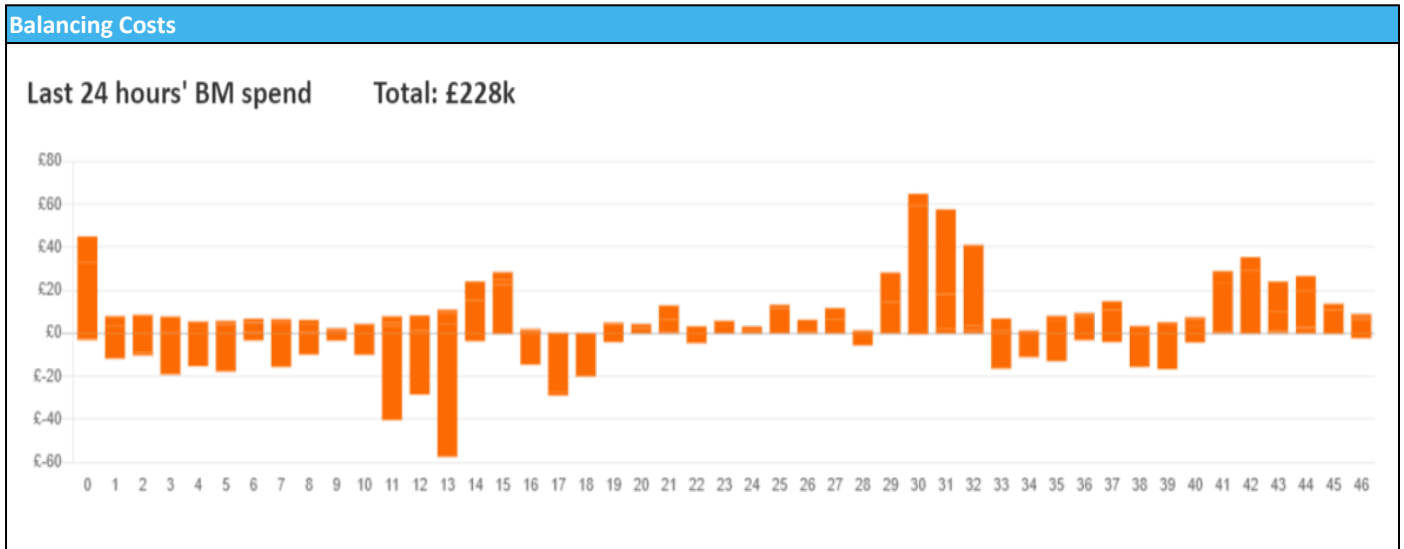


nationalgridESO

National Electricity Transmission System Status Report
Thursday 18 January 2024

Today's High Level Risk Status Forecast for the next 24h			
General Status		Voltage	
Demand		System Inertia	
System Margins		Weather	
Generation		Transmission	
Active Constraints			
System Warning			

Today's Minimum De-Rated Margin	6,277 (SP 19)	
Current BMU Largest Loss Risk	Generation	1400 MW
	Demand	560 MW



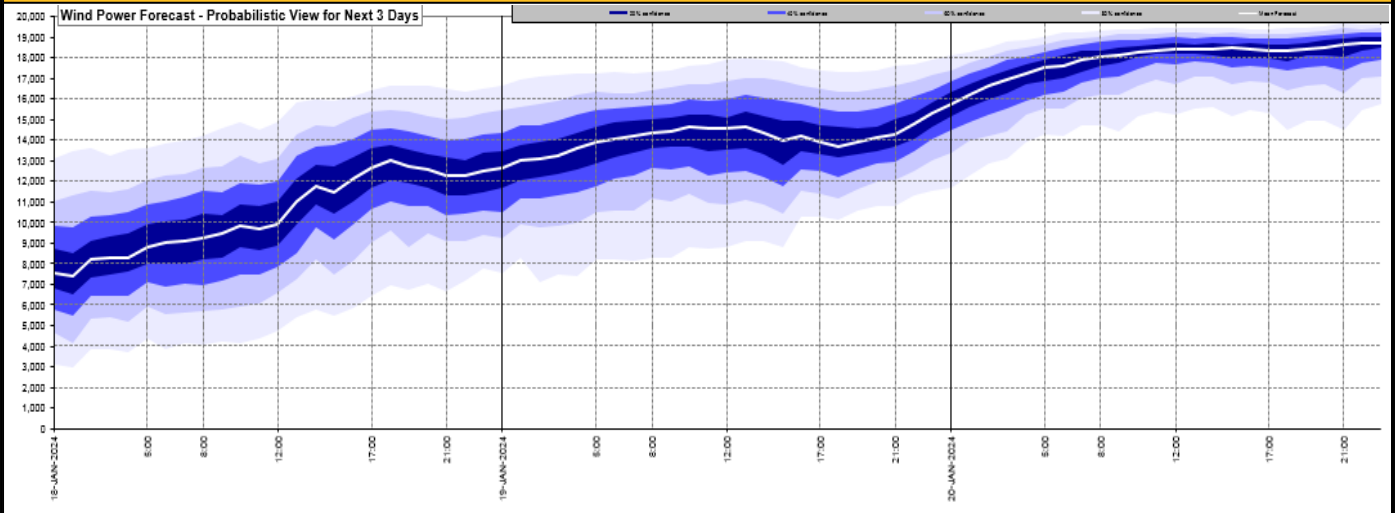
Yesterday's Market Summary

Cash Out Price (Max)	£125.00 (SP 32)
Cash Out Price (Min)	£50.16 (SP 4)
Peak Demand Yesterday	46,304 MW
Minimum Demand	26,638 MW

Interconnector Net Transfer Capacity (MWs)

Today	Import	Export	Remarks
Netherlands (BritNed)	1000	1000	Fully Available
France (IFA)	2000	2000	Fully Available
Belgium (Nemo)	1000	1000	Fully Available
Ireland (EWIC)	500	500	Fully Available
France (ElecLink)	1000	1000	Fully Available
Northern Ireland (MOYLE)	500	500	Fully Available
Norway (NSL)	1400	1400	Fully Available
France (IFA2)	0	0	Unavailable
Viking Link	1400	800	Restricted

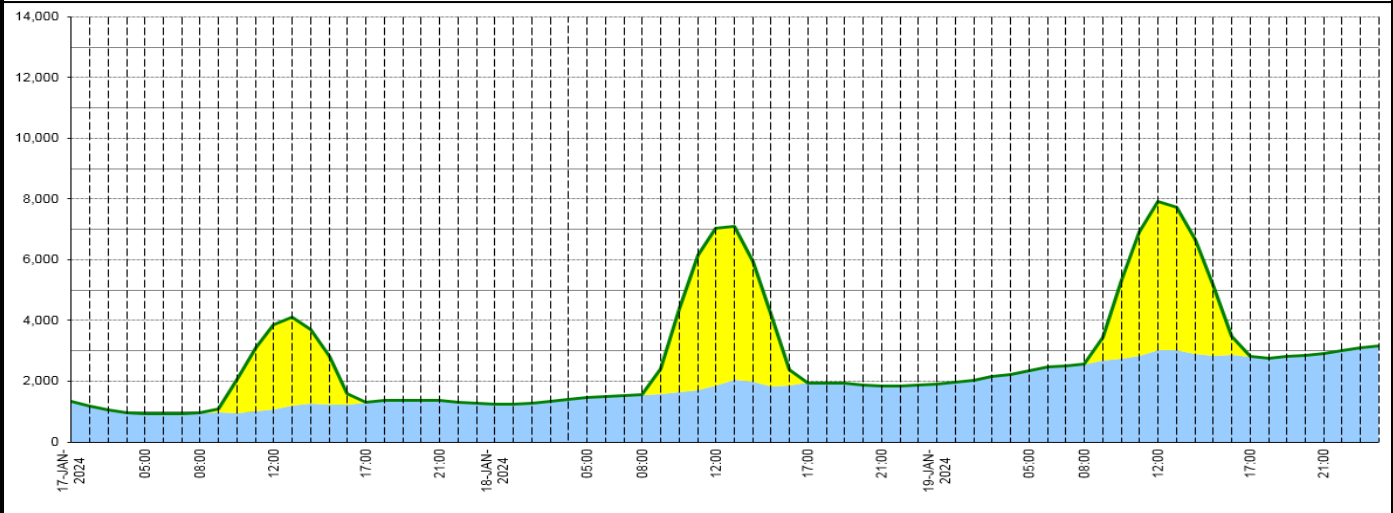
Wind Power Forecast



Expected embedded generation (MWs)

Embedded Generation Forecast

	17-JAN-2024					18-JAN-2024					19-JAN-2024						
	05:00	08:00	12:00	17:00	21:00	00:00	05:00	08:00	12:00	17:00	21:00	00:00	05:00	08:00	12:00	17:00	21:00
Solar (MW)	0	0	2782	0	0	0	0	0	5174	0	0	0	0	0	4908	0	0
Wind (MW)	932	948	1085	1308	1356	1241	1460	1549	1870	1952	1833	1920	2344	2565	3026	2813	2912
STOR (MW)	0	0	0	0	0	0	0	0	0	0	0	0	0	0	0	0	0
Total (MW)	932	948	3867	1308	1356	1241	1460	1549	7044	1952	1833	1920	2344	2565	7934	2813	2912



Weather	Source	Commentary
Latest forecast (Summary)	Met Office SEPA Natural Resources Wales	<p>Today: Further snow showers are likely across the north and west of Scotland, Northern Ireland, north and west Wales, Cornwall and eastern counties of England. Mostly dry and sunny elsewhere. Feeling very cold with brisk winds in the northeast.</p> <p>Tonight: Dry, clear and cold for many with a widespread frost. Further wintry showers across Scotland where there will also be an ice risk. Slightly less cold than previous nights.</p>
General Weather Concerns e.g. wind, rain, snow, flooding, GB Weather Warnings	Met Office Weather Warnings SEPA Natural Resources Wales	<p>UK Weather Warnings Amber warning of snow Areas affected: Highlands & Eilean Siar Orkney & Shetland</p> <p>ACTIVE started at: 15:00 GMT on Wed 17 January Ends: 18:00 GMT on Thu 18 January Frequent heavy snow showers will continue to affect the Northern Isles and northwest Scotland, disrupting travel across the region.</p> <ul style="list-style-type: none"> - Travel delays on roads are likely, stranding some vehicles and passengers - There is a good chance that some rural communities could become cut off - Power cuts are likely and other services, such as mobile phone coverage, may be affected - Some delays and cancellations to rail and air travel are likely

Weather	Source	Commentary
		<p>Issued at: 08:30 GMT on Wed 17 January Yellow warning of ice Areas affected: London & South East England</p> <p>ACTIVE Started at: 19:00 GMT on Wed 17 January Ends: 10:00 GMT on Thu 18 January Ice forming after wintry showers may lead to difficult driving conditions during Wednesday night.</p> <ul style="list-style-type: none"> - Probably some icy patches on some untreated roads, pavements and cycle paths - Some injuries from slips and falls on icy surfaces
		<p>Issued at: 18:23 GMT on Wed 17 January Yellow warning of snow and ice Areas affected: North West England South West England Wales West Midlands</p> <p>ACTIVE Started at: 22:00 GMT on Wed 17 January Ends: 11:00 GMT on Thu 18 January Ice and snow showers may lead to some difficult travel conditions during Thursday morning.</p> <ul style="list-style-type: none"> - Some roads and railways likely to be affected with longer journey times by road, bus and train services - Probably some icy patches on some untreated roads, pavements and cycle paths - Some injuries from slips and falls on icy surfaces
		<p>Issued at: 09:32 GMT on Wed 17 January Yellow warning of snow and ice Areas affected: Central, Tayside & Fife Grampian Highlands & Eilean Siar Northern Ireland Orkney & Shetland SW Scotland, Lothian Borders Strathclyde</p> <p>ACTIVE Started at: 00:00 GMT on Thu 18 January Ends: 23:59 GMT on Thu 18 January Further snow showers and some ice are likely to continue to bring disruption to travel.</p> <ul style="list-style-type: none"> - Possible travel delays on roads stranding some vehicles and passengers - Possible delays or cancellations to rail and air travel - Some rural communities could become cut off - A chance of injuries from slips and falls on icy surfaces - Untreated pavements and cycle paths might be impassable
		<p>Issued at: 12:19 GMT on Mon 15 January Yellow warning of snow and ice Areas affected: East Midlands East of England North East England Yorkshire & Humber</p> <p>ACTIVE Started at: 01:00 GMT on Thu 18 January Ends: 12:00 GMT on Thu 18 January Snow showers may lead to some disruption to travel during Thursday morning.</p> <ul style="list-style-type: none"> - Some roads and railways likely to be affected with longer journey times by road, bus and train services - Probably some icy patches on some untreated roads, pavements and cycle paths - Some injuries from slips and falls on icy surfaces
		<p>Issued at: 09:31 GMT on Wed 17 January Yellow warning of ice Areas affected: Northern Ireland</p> <p>Starts: 00:00 GMT on Fri 19 January Ends: 10:00 GMT on Fri 19 January Icy surfaces leading to some hazardous travel conditions</p> <ul style="list-style-type: none"> - Some injuries from slips and falls on icy surfaces - Probably some icy patches on some untreated roads, pavements and cycle paths
		<p>Issued at: 16:02 GMT on Wed 17 January</p>

Weather	Source	Commentary
		<p>Last updated: 12 hours agoLast updated: 12 hours ago</p> <p>Yellow warning of snow Areas affected: Central, Tayside & Fife Highlands & Eilean Siar Strathclyde</p> <p>Starts: 00:00 GMT on Fri 19 JanuaryEnds: 23:59 GMT on Fri 19 January Further snow showers with a risk of drifting snow will bring further disruption.</p> <ul style="list-style-type: none"> - Possible travel delays on roads stranding some vehicles and passengers - Possible delays or cancellations to rail and air travel - Some rural communities could become cut off - Power cuts may occur and other services, such as mobile phone coverage, may be affected <p>Issued at: 10:42 GMT on Wed 17 January</p> <p>Yellow warning of wind Areas affected: Central, Tayside & Fife East Midlands Grampian Highlands & Eilean Siar North East England North West England Northern Ireland Orkney & Shetland SW Scotland, Lothian Borders South West England Strathclyde Wales West Midlands Yorkshire & Humber</p> <p>Starts: 06:00 GMT on Sun 21 JanuaryEnds: 23:59 GMT on Sun 21 January A period of strong winds may bring disruption to travel and utilities across parts of the UK</p> <ul style="list-style-type: none"> - There is a small chance of injuries and danger to life from flying debris - There is a slight chance of some damage to buildings, such as tiles blown from roofs - There is a small chance of longer journey times or cancellations as road, rail, air and ferry services are affected - There is a small chance that some roads and bridges could close - There is a slight chance that power cuts may occur, with the potential to affect other services, such as mobile phone coverage - There is a small chance that injuries and danger to life could occur from large waves and beach material being thrown onto sea fronts, coastal roads and properties <p>Issued at: 10:33 GMT on Wed 17 January</p> <p>Flood Warnings 13 flood warnings and 62 flood alerts issued for England.</p> <p>0 flood warnings and 0 flood alerts issued for Scotland.</p> <p>0 flood warning and 0 flood alerts issued for Wales</p>

Contains public sector information licensed under the Open Government Licence v1.0

Further Information	
BM Reports	https://www.bmreports.com
System Balancing Reports	https://www.nationalgrideso.com/industry-information/industry-data-and-reports/system-balancing-reports
Forecast Volumes and Costs	https://www.nationalgrideso.com/industry-information/industry-data-and-reports/forecast-volumes-and-costs