

National Electricity Transmission System Status Report

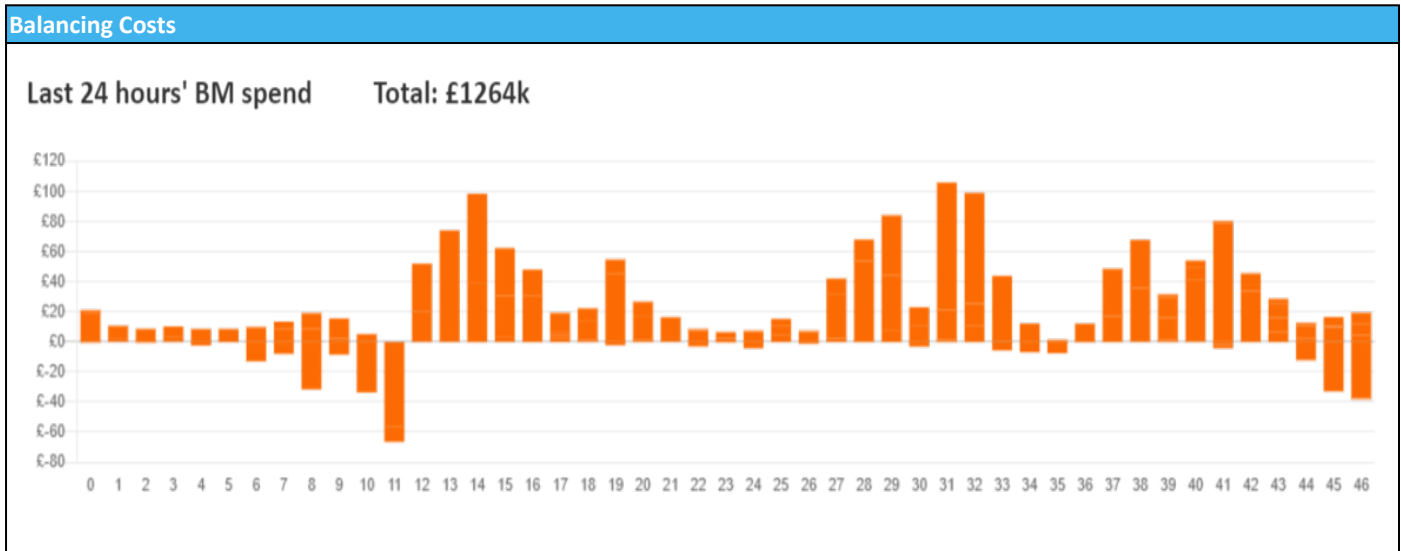


nationalgridESO

National Electricity Transmission System Status Report
Wednesday 17 January 2024

Today's High Level Risk Status Forecast for the next 24h			
General Status		Voltage	
Demand		System Inertia	
System Margins		Weather	
Generation		Transmission	
Active Constraints			
System Warning			

Today's Minimum De-Rated Margin	3,078 (SP 35)	
Current BMU Largest Loss Risk	Generation	1400 MW
	Demand	560 MW



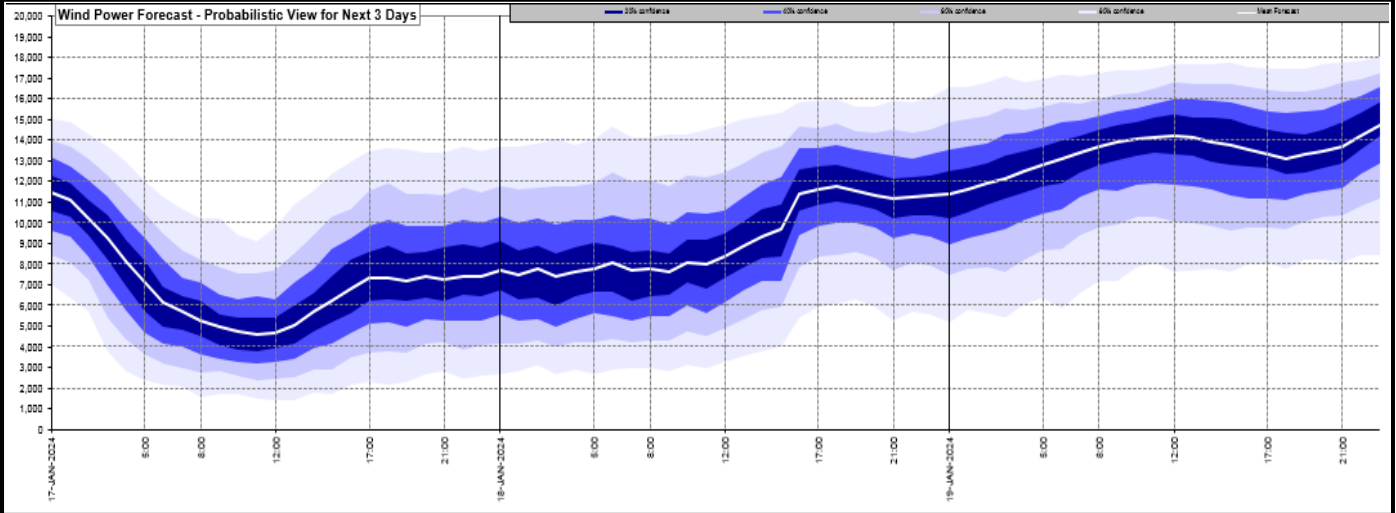
Yesterday's Market Summary

Cash Out Price (Max)	£136.70 (SP 21)
Cash Out Price (Min)	£50.10 (SP 13)
Peak Demand Yesterday	45,755 MW
Minimum Demand	27,135 MW

Interconnector Net Transfer Capacity (MWs)

Today	Import	Export	Remarks
Netherlands (BritNed)	1000	1000	Fully Available
France (IFA)	2000	2000	Fully Available
Belgium (Nemo)	1000	1000	Fully Available
Ireland (EWIC)	500	500	Fully Available
France (ElecLink)	1000	1000	Fully Available
Northern Ireland (MOYLE)	500	500	Fully Available
Norway (NSL)	1400	1400	Fully Available
France (IFA2)	0	0	Unavailable
Viking Link	1400	800	Restricted

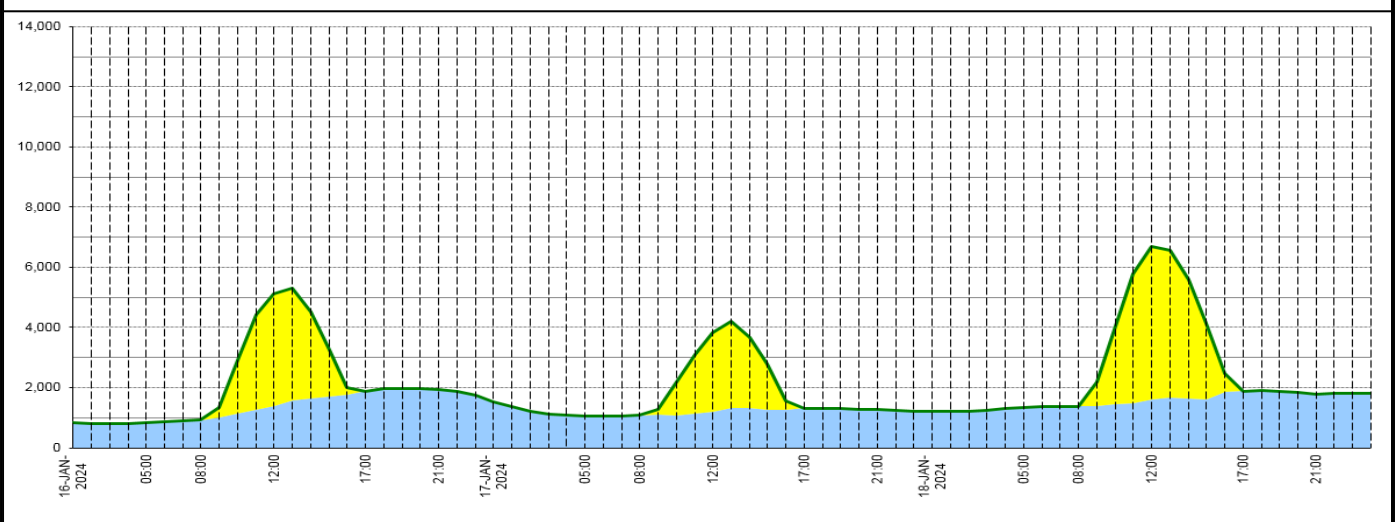
Wind Power Forecast



Expected embedded generation (MWs)

Embedded Generation Forecast

	16-JAN-2024					17-JAN-2024					18-JAN-2024						
	05:00	08:00	12:00	17:00	21:00	00:00	05:00	08:00	12:00	17:00	21:00	00:00	05:00	08:00	12:00	17:00	21:00
Solar (MW)	0	0	3704	0	0	0	0	0	2641	0	0	0	0	0	5084	0	0
Wind (MW)	849	929	1402	1889	1949	1536	1069	1080	1200	1314	1265	1211	1347	1376	1603	1881	1793
STOR (MW)	0	0	0	0	0	0	0	0	0	0	0	0	0	0	0	0	0
Total (MW)	849	929	5106	1889	1949	1536	1069	1080	3841	1314	1265	1211	1347	1376	6687	1881	1793



Weather	Source	Commentary
Latest forecast (Summary)	Met Office SEPA Natural Resources Wales	<p>Today: Snow showers continue to feed into coastal areas, mainly across Scotland and Northern Ireland. Elsewhere, many inland areas dry and sunny, though cloudier skies at first in south with the odd wintry flurry possible. Another cold day for all.</p> <p>Tonight: Clear periods for most this evening and overnight with temperatures quickly plummeting. A severe frost developing inland with icy patches. Further snow flurries in northern coastal areas at times.</p>
General Weather Concerns e.g. wind, rain, snow, flooding, GB Weather Warnings	Met Office Weather Warnings SEPA Natural Resources Wales	<p>UK Weather Warnings Yellow warning of snow and ice Areas affected: Central, Tayside & Fife Grampian Highlands & Eilean Siar Northern Ireland Orkney & Shetland Strathclyde</p> <p>ACTIVE Started at: 00:00 GMT on Wed 17 January Ends: 23:59 GMT on Wed 17 January Frequent heavy snow showers will continue to push inland, likely disrupting travel across the region.</p> <ul style="list-style-type: none"> - Possible travel delays on roads stranding some vehicles and passengers - Possible delays or cancellations to rail and air travel - Some rural communities could become cut off

Weather	Source	Commentary
		<ul style="list-style-type: none"> - A chance of injuries from slips and falls on icy surfaces - Untreated pavements and cycle paths might be impassable <p>Issued at: 12:06 GMT on Mon 15 January Yellow warning of snow and ice Areas affected: East Midlands North East England North West England SW Scotland, Lothian Borders Wales West Midlands Yorkshire & Humber</p> <p>ACTIVE Started at: 00:00 GMT on Wed 17 January Ends: 12:00 GMT on Wed 17 January A mixture of sleet, snow and ice could cause travel disruption.</p> <ul style="list-style-type: none"> - There is a small chance of travel delays on roads with some stranded vehicles and passengers, along with delayed or cancelled rail and air travel - A small chance of injuries from slips and falls on icy surfaces - A small chance that untreated pavements and cycle paths become impassable <p>Issued at: 12:09 GMT on Mon 15 January Yellow warning of ice Areas affected: Central, Tayside & Fife SW Scotland, Lothian Borders Strathclyde</p> <p>ACTIVE Started at: 00:00 GMT on Wed 17 January Ends: 12:00 GMT on Wed 17 January Following sleet and snowfall on Tuesday, a fairly widespread ice risk is expected overnight into Wednesday morning.</p> <ul style="list-style-type: none"> - Some injuries from slips and falls on icy surfaces - Icy patches on some untreated roads, pavements and cycle paths <p>Issued at: 12:07 GMT on Mon 15 January Yellow warning of snow and ice Areas affected: East Midlands North West England SW Scotland, Lothian Borders Wales West Midlands Yorkshire & Humber</p> <p>Starts: 00:00 GMT on Thu 18 January Ends: 23:59 GMT on Thu 18 January Snow showers across parts of west Wales initially, will increasingly affect northwest England later. Some travel disruption is likely.</p> <ul style="list-style-type: none"> - There is a small chance of travel delays on roads with some stranded vehicles and passengers, along with delayed or cancelled rail and air travel - A small chance of injuries from slips and falls on icy surfaces - A small chance that untreated pavements and cycle paths become impassable <p>Issued at: 12:19 GMT on Mon 15 January Yellow warning of snow and ice Areas affected: Central, Tayside & Fife Grampian Highlands & Eilean Siar Northern Ireland Orkney & Shetland SW Scotland, Lothian Borders Strathclyde</p> <p>Starts: 00:00 GMT on Thu 18 January Ends: 23:59 GMT on Thu 18 January Further snow showers and some ice are likely to continue to bring disruption to travel.</p> <ul style="list-style-type: none"> - Possible travel delays on roads stranding some vehicles and passengers - Possible delays or cancellations to rail and air travel - Some rural communities could become cut off - A chance of injuries from slips and falls on icy surfaces - Untreated pavements and cycle paths might be impassable
		<p>Issued at: 12:19 GMT on Mon 15 January</p> <p>Flood Warnings</p> <p>20 flood warnings and 65 flood alerts issued for England.</p> <p>0 flood warnings and 0 flood alerts issued for Scotland.</p> <p>0 flood warning and 2 flood alerts issued for Wales</p>

Further Information	
BM Reports	https://www.bmreports.com
System Balancing Reports	https://www.nationalgrideso.com/industry-information/industry-data-and-reports/system-balancing-reports
Forecast Volumes and Costs	https://www.nationalgrideso.com/industry-information/industry-data-and-reports/forecast-volumes-and-costs