

National Electricity Transmission System Status Report

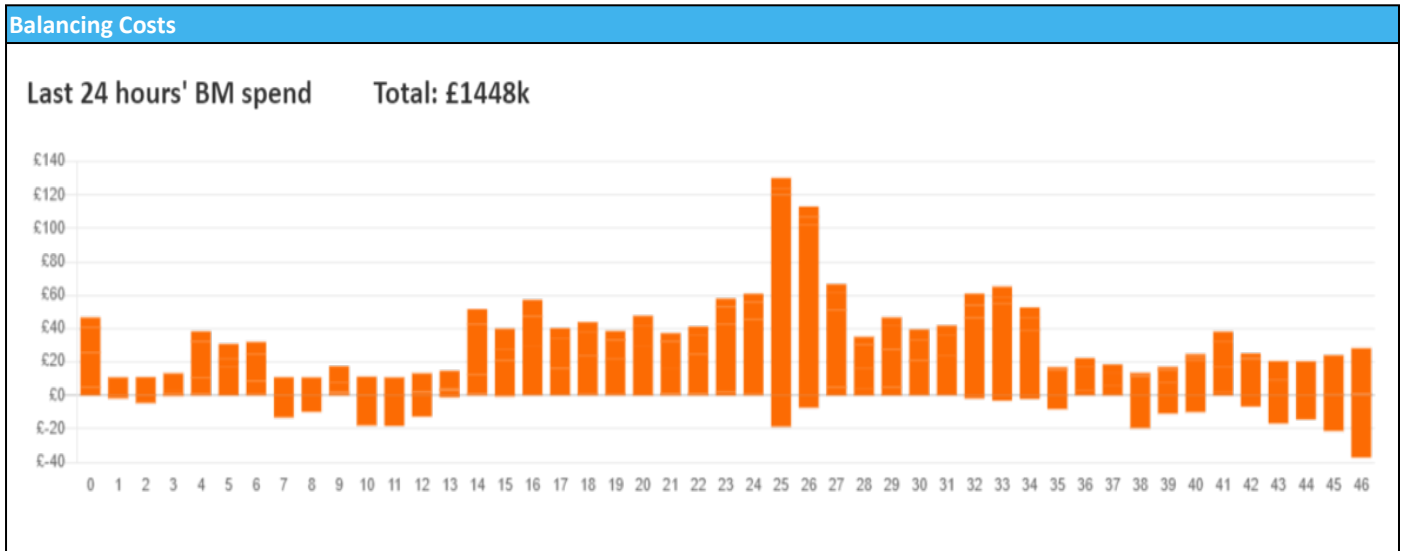


nationalgridESO

National Electricity Transmission System Status Report
Monday 08 January 2024

Today's High Level Risk Status Forecast for the next 24h			
General Status		Voltage	
Demand		System Inertia	
System Margins		Weather	
Generation		Transmission	
Active Constraints			
System Warning			

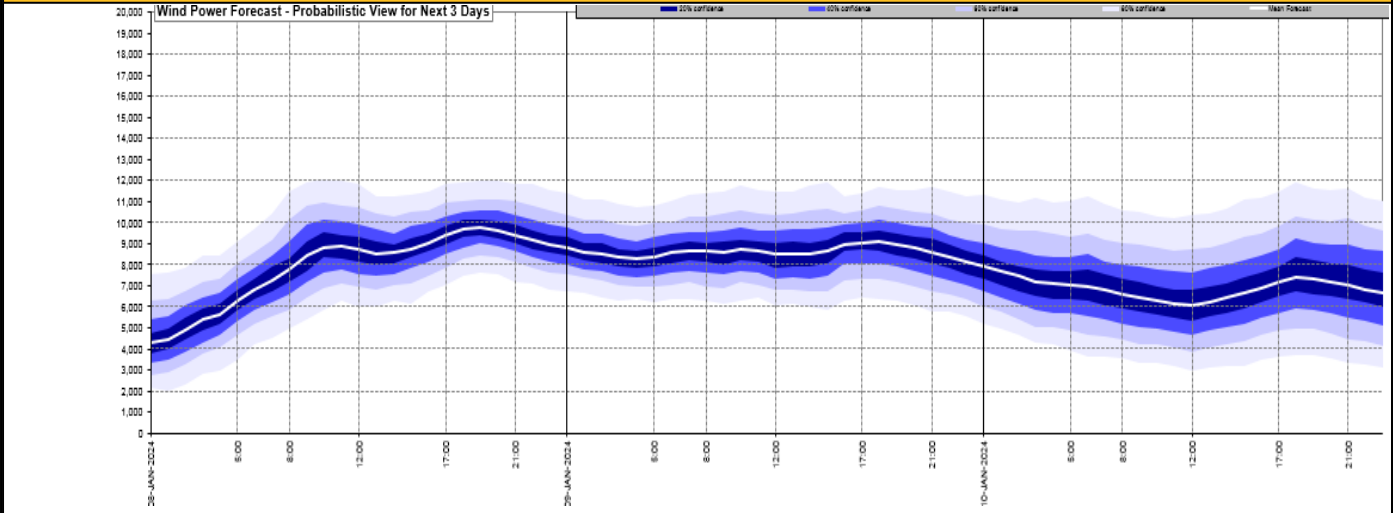
Today's Minimum De-Rated Margin	7843.81 (SP 36)	
Current BMU Largest Loss Risk	Generation	1400 MW
	Demand	560 MW



Yesterday's Market Summary	
Cash Out Price (Max)	£132 (SP 35)
Cash Out Price (Min)	£62.26 (SP 9,10,12,13,14)
Peak Demand Yesterday	42,633 MW
Minimum Demand	22,525 MW

Interconnector Net Transfer Capacity (MWs)			
Today	Import	Export	Remarks
Netherlands (BritNed)	1000	1000	Fully Available
France (IFA)	2000	2000	Fully Available
Belgium (Nemo)	1000	1025	Fully Available
Ireland (EWIC)	500	530	Fully Available
France (ElecLink)	1000	1000	Fully Available
Northern Ireland (MOYLE)	500	500	Fully Available
Norway (NSL)	1424	1424	Fully Available
France (IFA2)	0	0	Unavailable
Viking Link	800	800	Partially Available

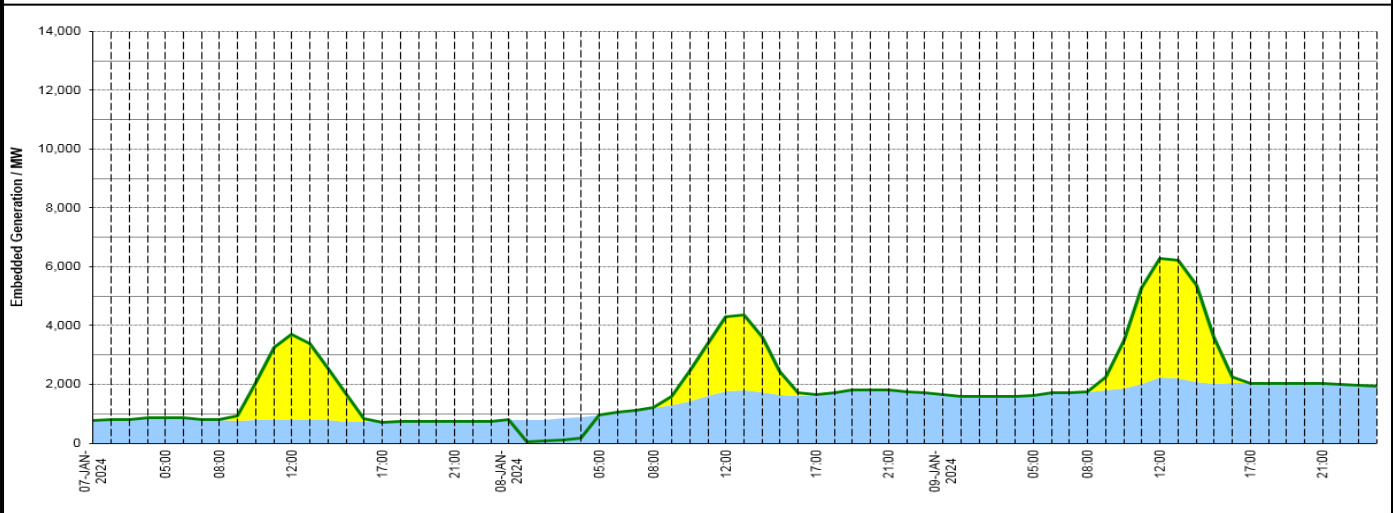
Wind Power Forecast



Expected embedded generation (MWs)

Embedded Generation Forecast

Embedded Generation Estimates															Last run: 08-Jan-2024 04:32:21		
	07-JAN-2024					08-JAN-2024					09-JAN-2024						
	05:00	08:00	12:00	17:00	21:00	00:00	05:00	08:00	12:00	17:00	21:00	00:00	05:00	08:00	12:00	17:00	21:00
Solar (MW)	0	0	2898	0	0	0	0	0	2525	0	0	0	0	0	4056	0	0
Wind (MW)	881	791	801	723	733	790	961	1204	1769	1650	1818	1655	1621	1740	2238	2039	2020
STOR (MW)	0	0	0	0	0	0	0	0	0	0	0	0	0	0	0	0	0
Total (MW)	881	791	3699	723	733	790	961	1204	4294	1650	1818	1655	1621	1740	6294	2039	2020



Weather	Source	Commentary
Latest forecast (Summary)	Met Office SEPA Natural Resources Wales	Today: Any early morning fog clearing by midday. Variable cloud with sunny spells for many with the odd wintry shower across the southeast of England. Cold for most, but notably in the south in a fresh northeasterly breeze. Tonight: Wintry showers continue across southern parts, clearing westwards. Mostly dry elsewhere, but a widespread hard frost under any clear skies. Remaining cold with freezing fog patches for parts of Scotland.
General Weather Concerns e.g. wind, rain, snow, flooding, GB Weather Warnings	Met Office Weather Warnings SEPA Natural Resources Wales	UK Weather Warnings Yellow warning of ice Areas affected: London & South East England Flood Warnings 169 flood warnings and 159 flood alerts issued for England. 0 flood warnings and 0 flood alerts issued for Scotland. 1 flood warning and 4 flood alerts issued for Wales

Contains public sector information licensed under the Open Government Licence v1.0

Further Information	
BM Reports	https://www.bmreports.com
System Balancing Reports	https://www.nationalgrideso.com/industry-information/industry-data-and-reports/system-balancing-reports
Forecast Volumes and Costs	https://www.nationalgrideso.com/industry-information/industry-data-and-reports/forecast-volumes-and-costs