

# National Electricity Transmission System Status Report

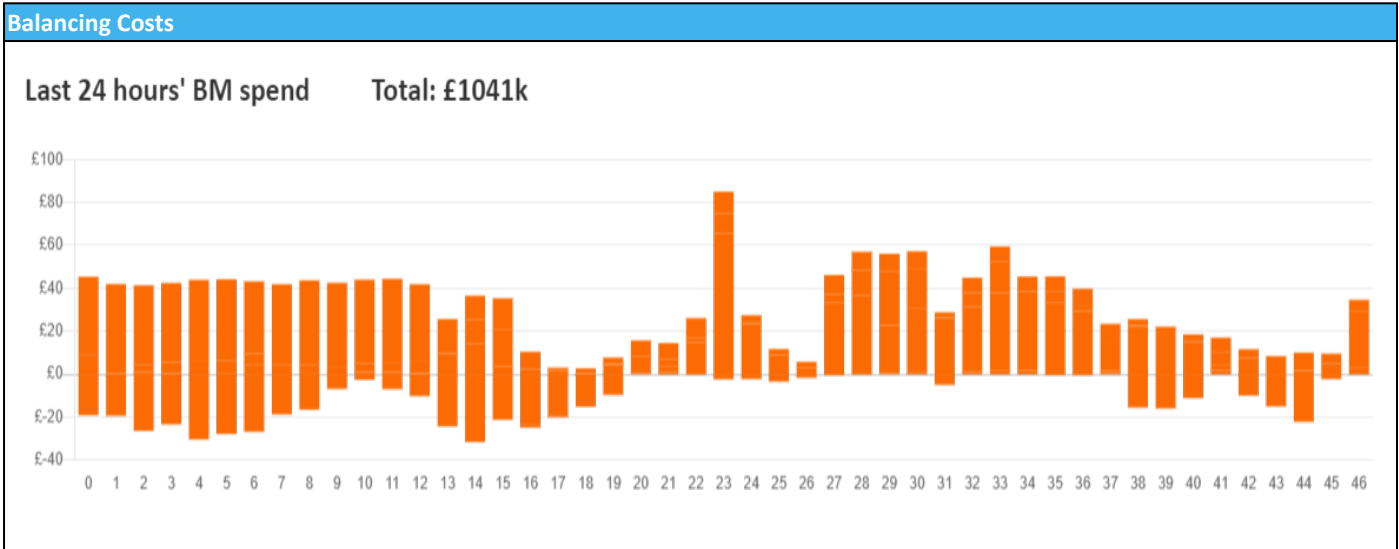


nationalgridESO

National Electricity Transmission System Status Report  
Sunday 07 January 2024

Today's High Level Risk Status Forecast for the next 24h			
General Status		Voltage	
Demand		System Inertia	
System Margins		Weather	
Generation		Transmission	
Active Constraints			
<a href="#">System Warning</a>			

<a href="#">Today's Minimum De-Rated Margin</a>	9187 (SP 36)	
Current BMU Largest Loss Risk	Generation	1400 MW
	Demand	560 MW



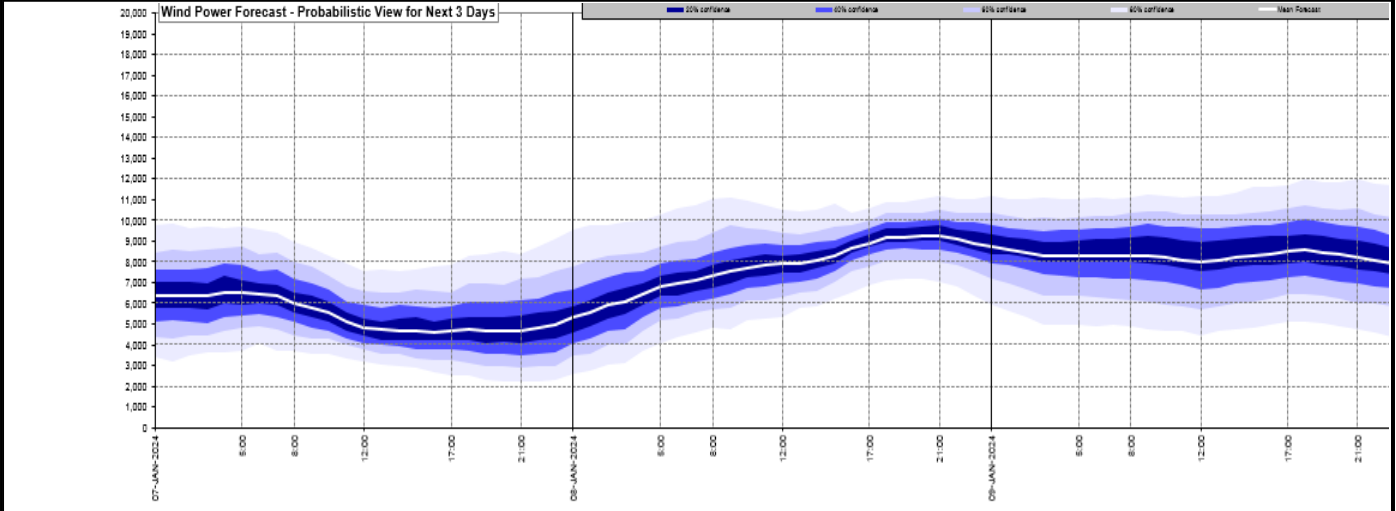
**Yesterday's Market Summary**

<a href="#">Cash Out Price (Max)</a>	£135 (SP 25, 30)
<a href="#">Cash Out Price (Min)</a>	£51.1 (SP 15, 18)
<a href="#">Peak Demand Yesterday</a>	40,012 MW
Minimum Demand	22,311 MW

**Interconnector Net Transfer Capacity (MWs)**

Today	Import	Export	Remarks
Netherlands (BritNed)	1000	1000	Fully Available
France (IFA)	1500	1500	Returning to full at 12:00
Belgium (Nemo)	1000	1025	Fully Available
Ireland (EWIC)	500	530	Fully Available
France (ElecLink)	1000	1000	Fully Available
Northern Ireland (MOYLE)	500	500	Fully Available
Norway (NSL)	1424	1424	Fully Available
France (IFA2)	0	0	Unavailable
Viking Link	800	800	Partially Available

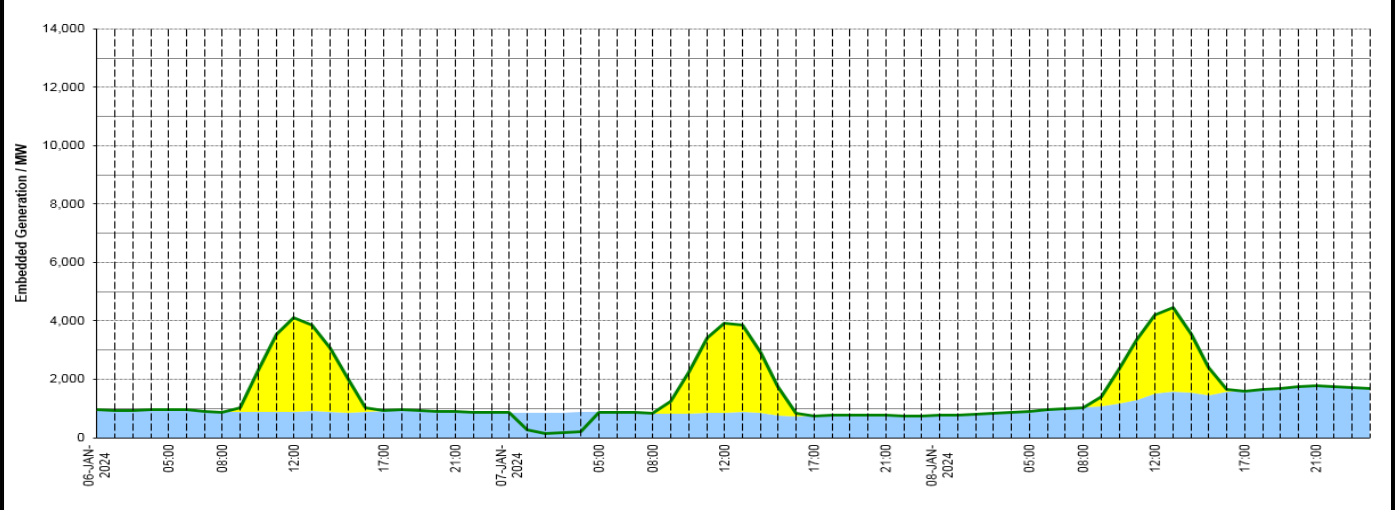
**Wind Power Forecast**



**Expected embedded generation (MWs)**

**Embedded Generation Forecast**

Embedded Generation Estimates																Last run: 07-Jan-2024 04:32:32	
	06-JAN-2024					07-JAN-2024					08-JAN-2024						
	05:00	08:00	12:00	17:00	21:00	00:00	05:00	08:00	12:00	17:00	21:00	00:00	05:00	08:00	12:00	17:00	21:00
Solar (MW)	0	0	3198	0	0	0	0	0	3068	0	0	0	0	0	2709	0	0
Wind (MW)	960	878	897	930	905	855	882	833	863	752	763	770	903	1029	1498	1604	1782
STOR (MW)	0	0	0	0	0	0	0	0	0	0	0	0	0	0	0	0	0
<b>Total (MW)</b>	<b>960</b>	<b>878</b>	<b>4095</b>	<b>930</b>	<b>905</b>	<b>855</b>	<b>882</b>	<b>833</b>	<b>3931</b>	<b>752</b>	<b>763</b>	<b>770</b>	<b>903</b>	<b>1029</b>	<b>4207</b>	<b>1604</b>	<b>1782</b>



Weather	Source	Commentary
Latest forecast (Summary)	<a href="#">Met Office</a> <a href="#">SEPA</a> <a href="#">Natural Resources Wales</a>	<b>Today:</b> Foggy Sunday for parts of Northern Ireland, central and southern Scotland, where patches linger. Scattered showers in the east but remaining dry elsewhere with sunny spells. Feeling rather cold for all, accentuated further by a brisk wind in the southeast. <b>Tonight:</b> Some showers continuing but otherwise a dry night with variable amounts of cloud. Fog patches returning, most likely across Northern Ireland, Scotland and northwest England. Widespread frost and icy stretches.
General Weather Concerns e.g. wind, rain, snow, flooding, GB Weather Warnings	<a href="#">Met Office</a> <a href="#">Weather Warnings</a> <a href="#">SEPA</a> <a href="#">Natural Resources Wales</a>	<b>UK Weather Warnings</b> No weather warnings are in force for the UK <b>Flood Warnings</b> 192 flood warnings and 207 flood alerts issued for England.  0 flood warnings and 0 flood alerts issued for Scotland.  1 flood warning and 4 flood alerts issued for Wales

Contains public sector information licensed under the Open Government Licence v1.0

Further Information	
BM Reports	<a href="https://www.bmreports.com">https://www.bmreports.com</a>
System Balancing Reports	<a href="https://www.nationalgrideso.com/industry-information/industry-data-and-reports/system-balancing-reports">https://www.nationalgrideso.com/industry-information/industry-data-and-reports/system-balancing-reports</a>
Forecast Volumes and Costs	<a href="https://www.nationalgrideso.com/industry-information/industry-data-and-reports/forecast-volumes-and-costs">https://www.nationalgrideso.com/industry-information/industry-data-and-reports/forecast-volumes-and-costs</a>