

**National Electricity
Transmission System Status Report**

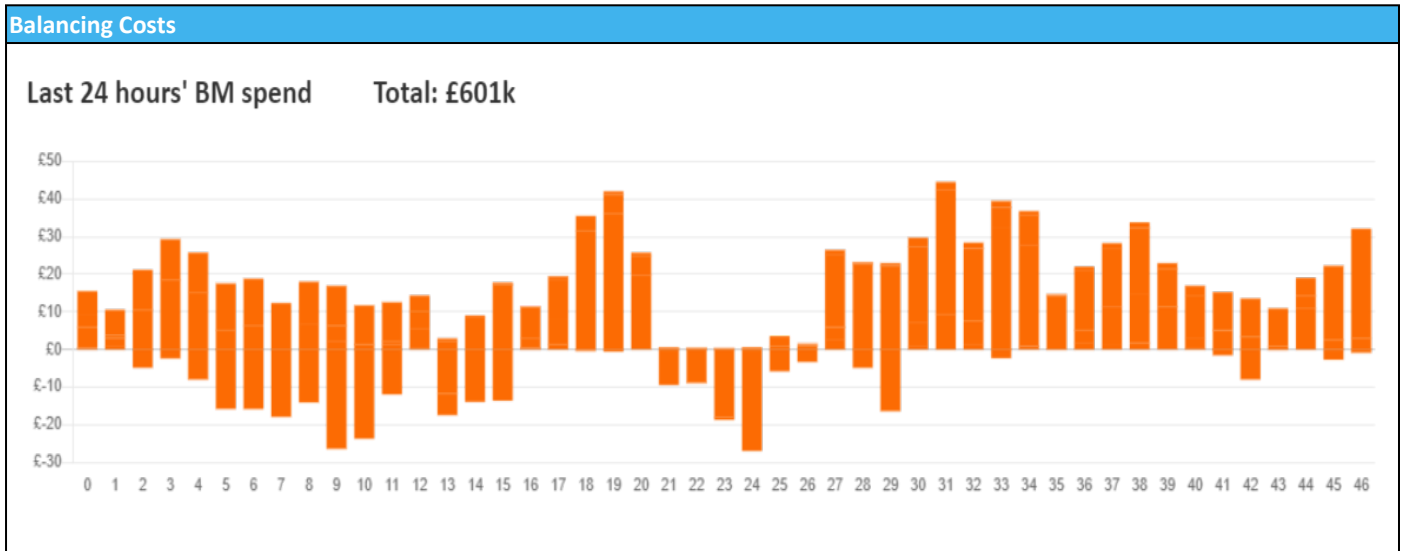


national**grid**ESO

National Electricity Transmission System Status Report
Saturday 06 January 2024

Today's High Level Risk Status Forecast for the next 24h			
General Status		Voltage	
Demand		System Inertia	
System Margins		Weather	
Generation		Transmission	
Active Constraints			
System Warning			

Today's Minimum De-Rated Margin	9041 (SP 35)	
Current BMU Largest Loss Risk	Generation	1400 MW
	Demand	560 MW



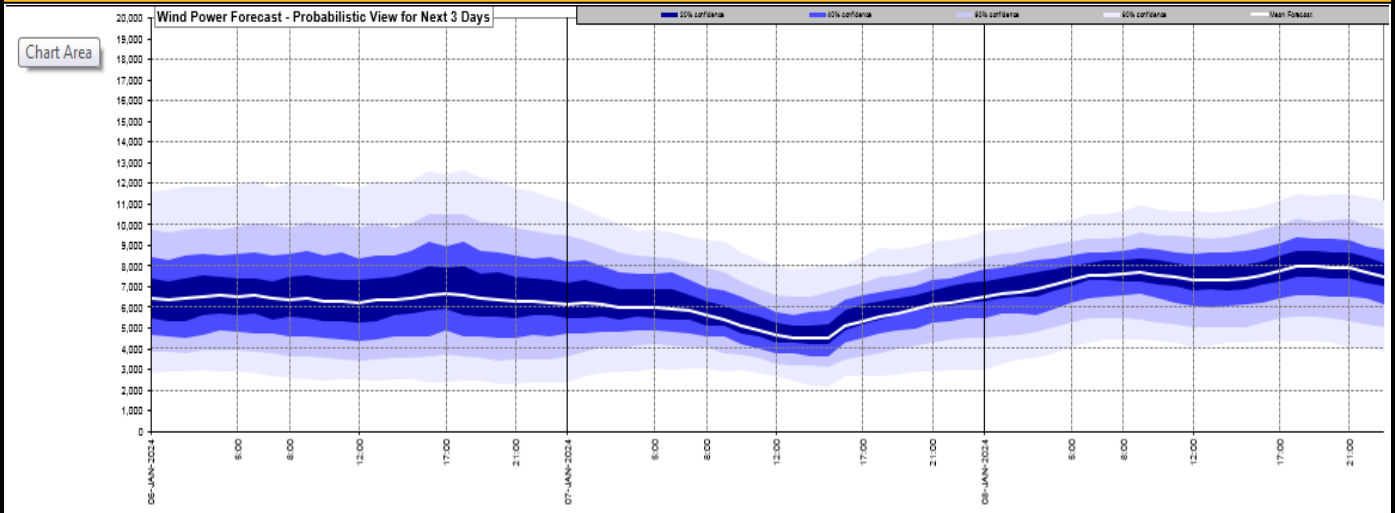
Yesterday's Market Summary

Cash Out Price (Max)	£128.88 (SP 35)
Cash Out Price (Min)	£38 (SP 15)
Peak Demand Yesterday	41,390 MW
Minimum Demand	21,767 MW

Interconnector Net Transfer Capacity (MWs)

Today	Import	Export	Remarks
Netherlands (BritNed)	1000	1000	Fully Available
France (IFA)	2000	2000	Fully Available
Belgium (Nemo)	1000	1025	Fully Available
Ireland (EWIC)	500	530	Fully Available
France (ElecLink)	1000	1000	Fully Available
Northern Ireland (MOYLE)	500	500	Fully Available
Norway (NSL)	1424	1424	Fully Available
France (IFA2)	0	0	Unavailable
Viking Link	800	800	Partially Available

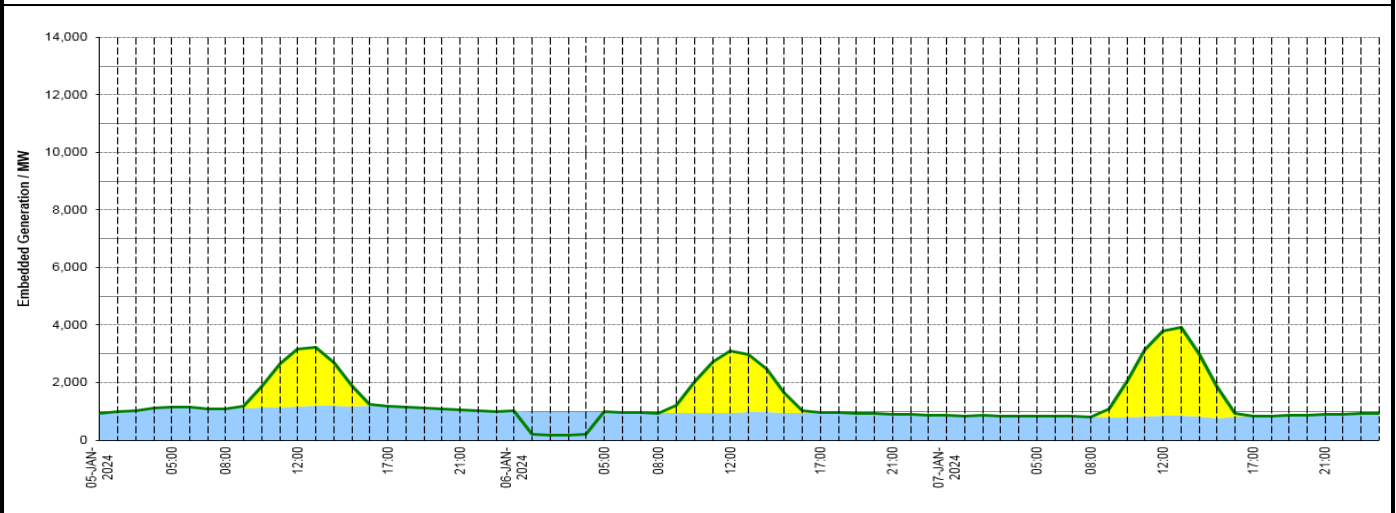
Wind Power Forecast



Expected embedded generation (MWs)

Embedded Generation Forecast

Embedded Generation Estimates															Last run: 06-Jan-2024 04:32:51		
	05-JAN-2024					06-JAN-2024					07-JAN-2024						
	05:00	08:00	12:00	17:00	21:00	00:00	05:00	08:00	12:00	17:00	21:00	00:00	05:00	08:00	12:00	17:00	21:00
Solar (MW)	0	0	1994	0	0	0	0	0	2150	0	0	0	0	0	2952	0	0
Wind (MW)	1153	1089	1160	1167	1057	1017	980	936	951	966	898	857	835	806	850	823	901
STOR (MW)	0	0	0	0	0	0	0	0	0	0	0	0	0	0	0	0	0
Total (MW)	1153	1089	3154	1167	1057	1017	980	936	3101	966	898	857	835	806	3802	823	901



Weather	Source	Commentary
Latest forecast (Summary)	Met Office SEPA Natural Resources Wales	<p>Today: High pressure builds through Saturday with most places remaining dry with sunny spells, though a few showers along the coasts. Still rather cloudy across eastern parts with some patchy rain and drizzle. Feeling cold.</p> <p>Tonight: Staying largely dry with cloud gradually breaking through the night. Clear spells developing allowing for frost and fog patches to form under the light winds. A colder night.</p>
General Weather Concerns e.g. wind, rain, snow, flooding, GB Weather Warnings	Met Office Weather Warnings SEPA Natural Resources Wales	<p>UK Weather Warnings No weather warnings are in force for the UK</p> <p>Flood Warnings 244 flood warnings and 262 flood alerts issued for England. 0 flood warnings and 0 flood alerts issued for Scotland. 2 flood warnings and 9 flood alerts issued for Wales</p>

Contains public sector information licensed under the Open Government Licence v1.0

Further Information	
BM Reports	https://www.bmreports.com
System Balancing Reports	https://www.nationalgrideso.com/industry-information/industry-data-and-reports/system-balancing-reports
Forecast Volumes and Costs	https://www.nationalgrideso.com/industry-information/industry-data-and-reports/forecast-volumes-and-costs