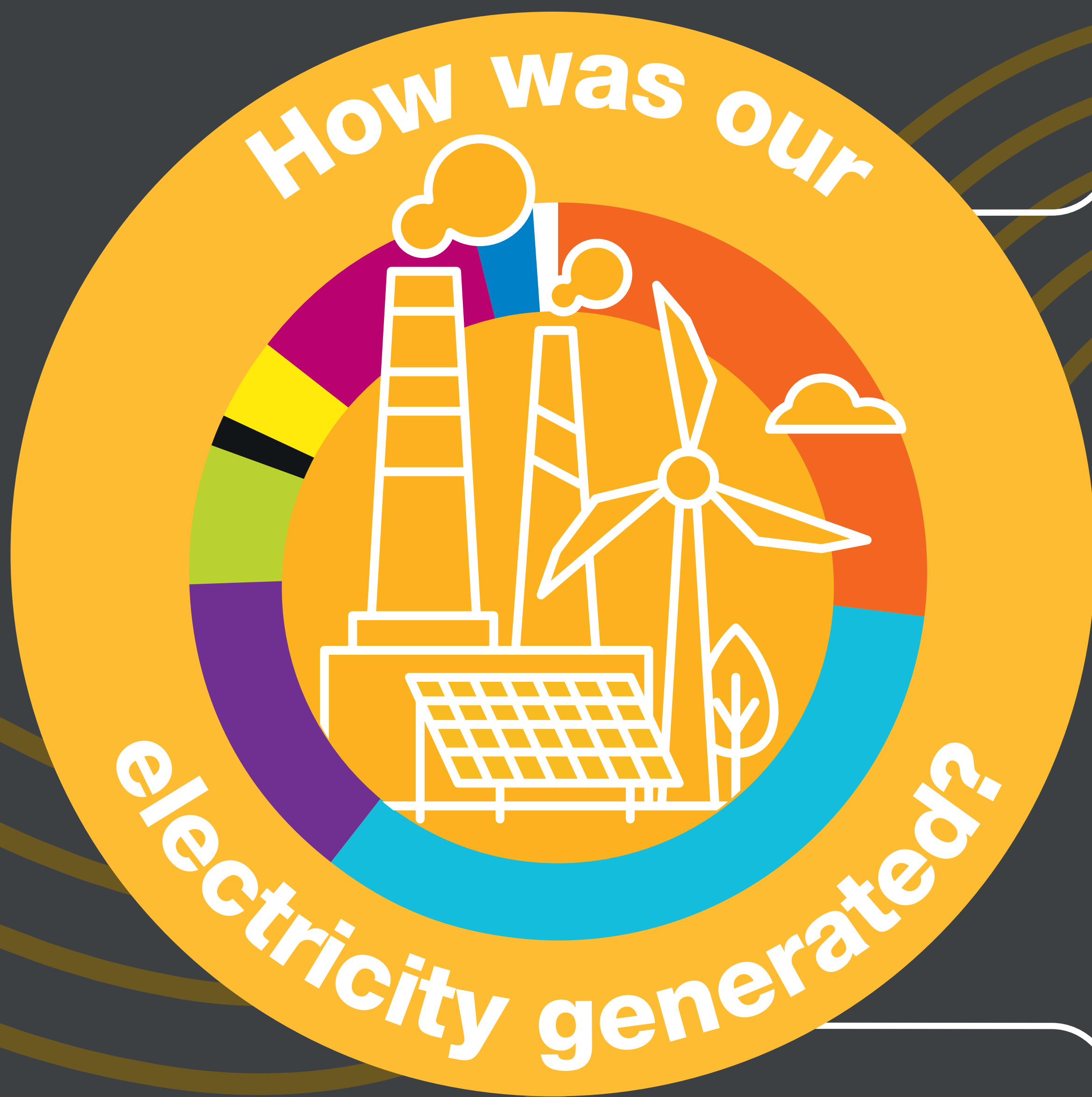


Britain's Electricity Explained: November 2023

ESO



Gas	31%
Wind	30.7%
Nuclear	11.6%
Biomass	7%
Coal	2.4%
Solar	1.9%
Imports	12.3%
Hydro	2.1%
Storage	1%

Zero carbon



47% of electricity came from zero carbon sources
82% peak zero carbon share

Carbon intensity



161 gCO₂/kWh average  Greenest time of the month
 1:30pm on 1 November

Coal

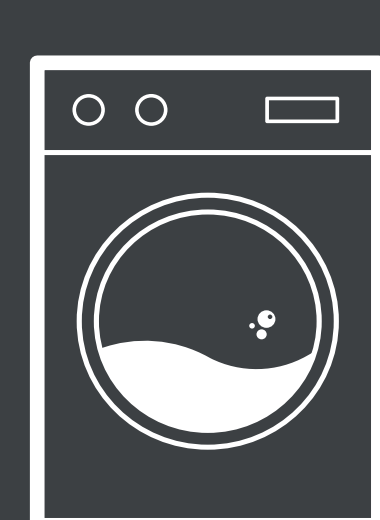


2.4% use this month
 This time **5 years ago** coal usage was **8.7%**
12 consecutive coal free hours

Imports & exports



Demand



24TWh run through network (that's 24 billion washing machine cycles).
 Peak demand time was 5pm on 30 November.

View in real-time



To view our data in real-time, please download the ESO app for Apple or Android.
 Or visit carbonintensity.org.uk