

National Electricity Transmission System Status Report

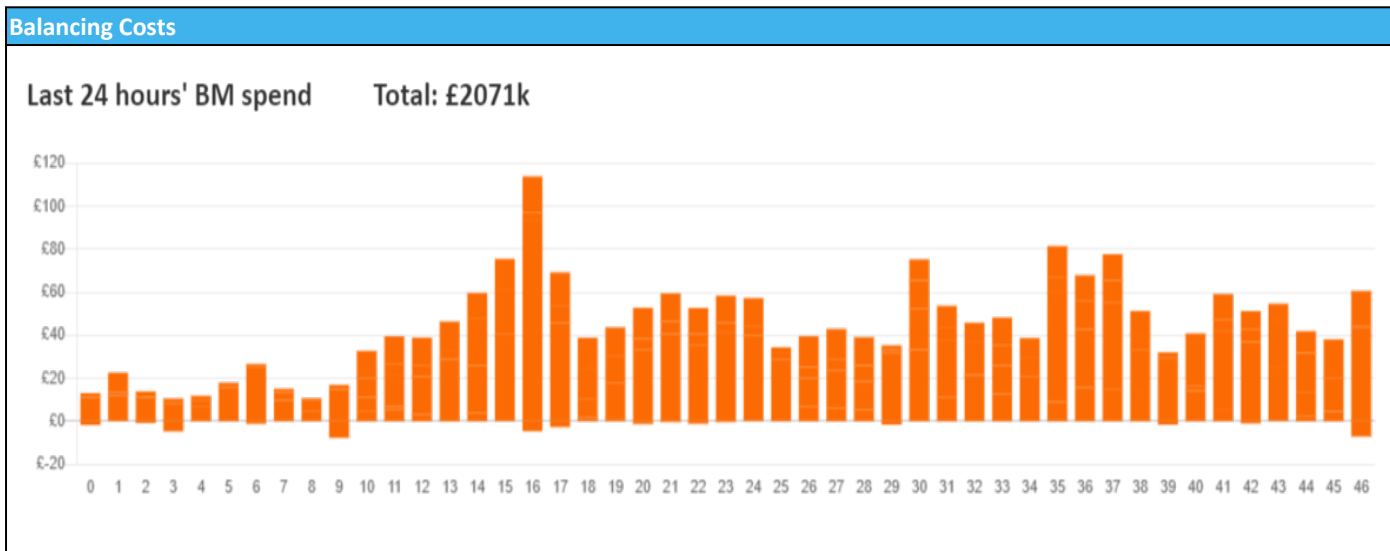


nationalgridESO

National Electricity Transmission System Status Report
Sunday 03 December 2023

Today's High Level Risk Status Forecast for the next 24h			
General Status		Voltage	
Demand		System Inertia	
System Margins		Weather	
Generation		Transmission	
Active Constraints			
System Warning			

Today's Minimum De-Rated Margin	6119 (SP 35)	
Current BMU Largest Loss Risk	Generation	1400 MW
	Demand	560 MW



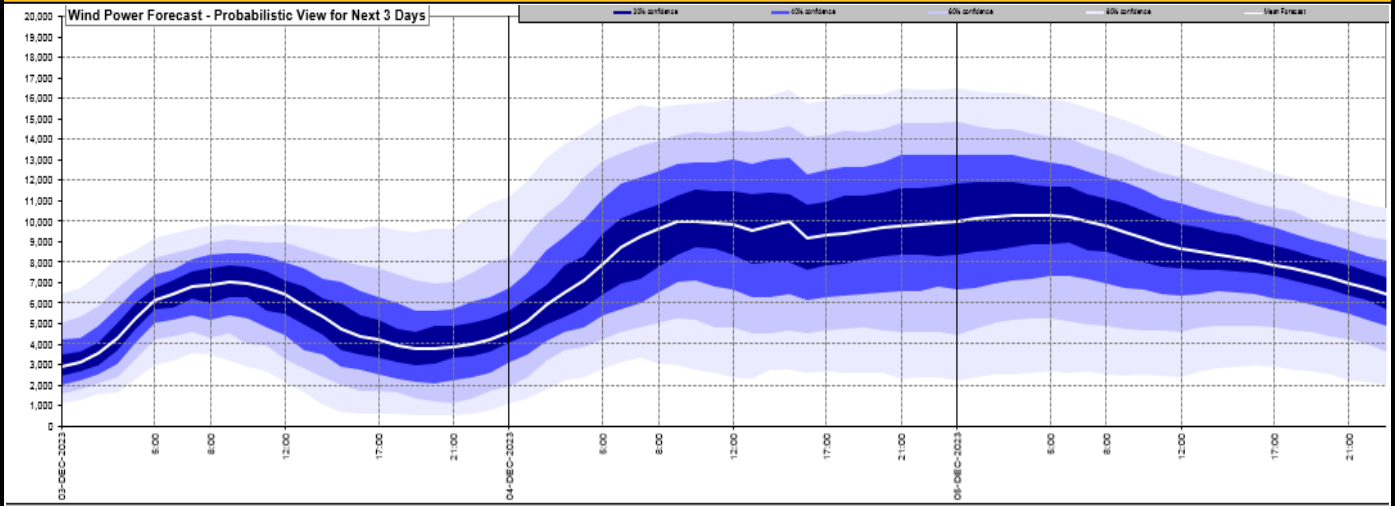
Yesterday's Market Summary

Cash Out Price (Max)	£195.00 (SP 37)
Cash Out Price (Min)	£78.61 (SP 5)
Peak Demand Yesterday	43,047 MW
Minimum Demand	26,025 MW

Interconnector Net Transfer Capacity (MWs)

Today	Import	Export	Remarks
Netherlands (BritNed)	1000	1000	Fully Available
France (IFA)	2000	2000	Fully Available
Belgium (Nemo)	1000	1025	Fully Available
Ireland (EWIC)	500	530	Fully Available
France (ElecLink)	1000	1000	Fully Available
Northern Ireland (MOYLE)	500	500	Fully Available
Norway (NSL)	1424	1424	Fully Available
France (IFA2)	0	0	Unavailable
Viking Link	0	0	Not yet commissioned

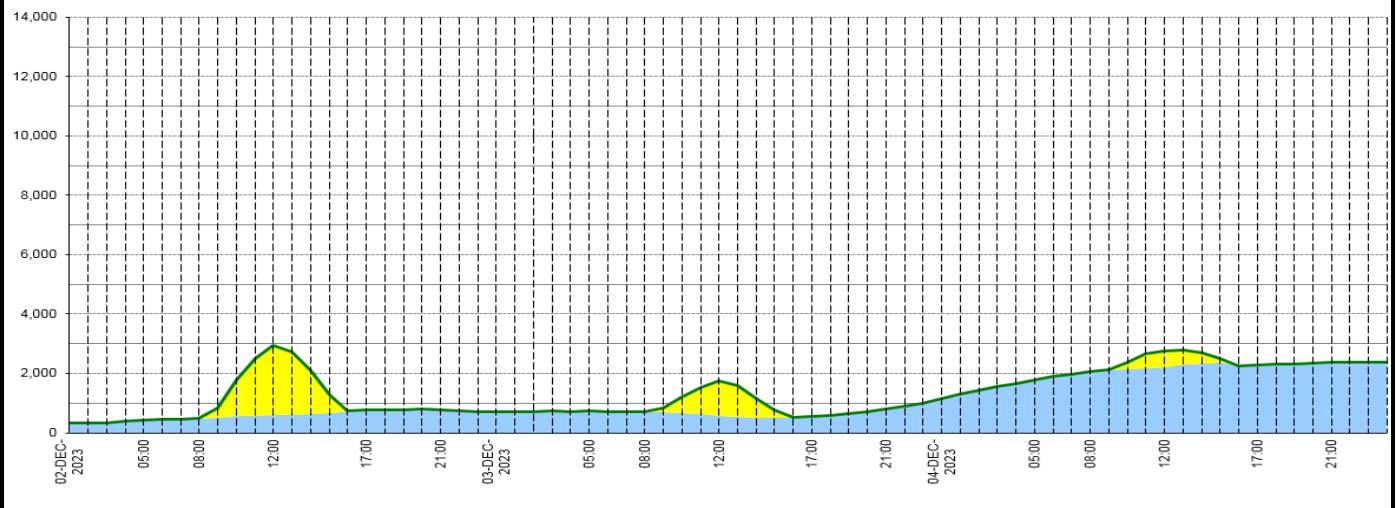
Wind Power Forecast



Expected embedded generation (MWs)

Embedded Generation Forecast

	02-DEC-2023					03-DEC-2023					04-DEC-2023						
	05:00	08:00	12:00	17:00	21:00	00:00	05:00	08:00	12:00	17:00	21:00	00:00	05:00	08:00	12:00	17:00	21:00
Solar (MW)	0	21	2343	0	0	0	0	0	1156	0	0	0	0	0	548	0	0
Wind (MW)	436	474	594	758	782	713	729	701	579	541	798	1148	1775	2048	2207	2283	2365
STOR (MW)	0	0	0	0	0	0	0	0	0	0	0	0	0	0	0	0	0
Total (MW)	436	495	2937	758	782	713	729	701	1735	541	798	1148	1775	2048	2755	2283	2365



Weather	Source	Commentary
Latest forecast (Summary)	Met Office SEPA Natural Resources Wales	<p>Today: Much of England and Wales will be rather cloudy on Sunday with outbreaks of patchy rain and hill snow. Elsewhere fog gradually lifting for most to sunny spells and a few wintry showers. Cold, though less cold in the south.</p> <p>Tonight: Rain across England and Wales becoming more persistent overnight, turning wintry over the hills accompanied by stronger winds. Clearer spells in the north with some wintry showers and remaining cold.</p>
General Weather Concerns e.g. wind, rain, snow, flooding, GB Weather Warnings	Met Office Weather Warnings SEPA Natural Resources Wales	<p>UK Weather Warnings Yellow warning of snow and ice Areas affected: East Midlands North East England North West England Wales West Midlands Yorkshire & Humber ACTIVE Started at: 18:00 GMT on Sat 2 December Ends: 12:00 GMT on Sun 3 December Snow and ice this evening and into Sunday morning may lead to some disruption to transport and infrastructure. - Some roads and railways likely to be affected with longer journey times by road, bus and train services - Some injuries from slips and falls on icy surfaces - Probably some icy patches on some untreated roads, pavements and cycle paths</p>

Weather	Source	Commentary
		<p>Yellow warning of ice Areas affected: East Midlands East of England London & South East England South West England Wales West Midlands ACTIVE Started at: 00:00 GMT on Sun 3 December Ends: 08:00 GMT on Sun 3 December Areas of rain or sleet falling on frozen surfaces may lead to icy conditions - Some injuries from slips and falls on icy surfaces - Probably some icy patches on some untreated roads, pavements and cycle paths</p> <p>Yellow warning of ice Areas affected: North East England North West England SW Scotland, Lothian Borders Yorkshire & Humber ACTIVE Started at: 00:00 GMT on Sun 3 December Ends: 11:00 GMT on Sun 3 December Ice will be a hazard overnight and through Sunday morning, making for difficult travel conditions. - Probably some icy patches on some untreated roads, pavements and cycle paths - Some injuries from slips and falls on icy surfaces</p> <p>Yellow warning of snow Areas affected: East Midlands Yorkshire & Humber ACTIVE Started at: 02:50 GMT on Sun 3 December Ends: 07:00 GMT on Sun 3 December A spell of heavy snow is likely to cause some disruption to travel at first this morning. - Possible travel delays on roads stranding some vehicles and passengers - Possible delays or cancellations to rail and air travel</p>
		<p>Flood Warnings 0 flood warnings and 9 flood alerts issued for England.</p> <p>0 flood warnings and 0 flood alerts issued for Scotland.</p> <p>0 flood warnings and 0 flood alert issued for Wales</p>

Contains public sector information licensed under the Open Government Licence v1.0

Further Information	
BM Reports	https://www.bmreports.com
System Balancing Reports	https://www.nationalgrideso.com/industry-information/industry-data-and-reports/system-balancing-reports
Forecast Volumes and Costs	https://www.nationalgrideso.com/industry-information/industry-data-and-reports/forecast-volumes-and-costs