

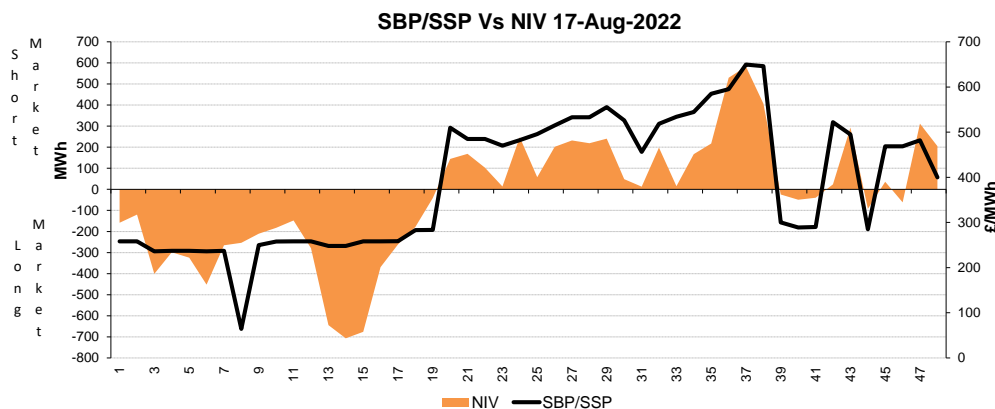
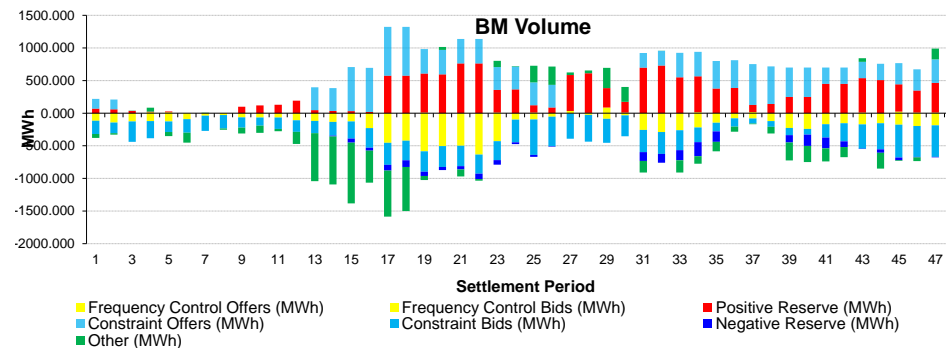
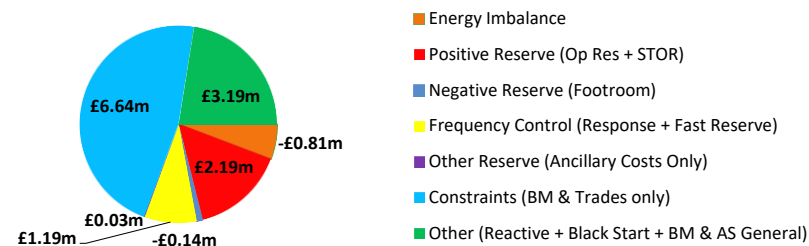
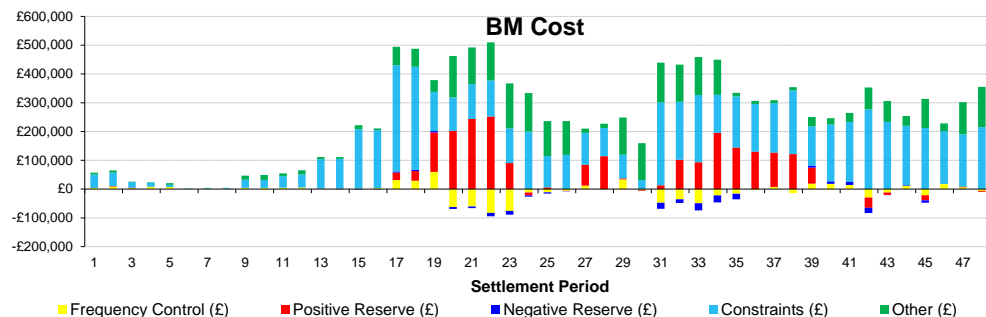
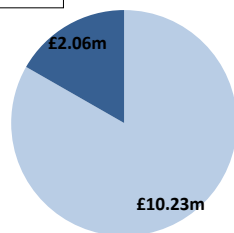
Date: Wednesday 17 Aug 2022

BSUoS Charge Estimate: £10.93/MWh  
Total Outturn: £12.29m

# Daily Balancing Costs

**nationalgrid**ESO

BM Cost (Indicative)  
AS Cost (Estimate)



## Commentary

The market was short in excess of 1000MW between the midmorning and the evening. Throughout the 24 hours multiple trades on the interconnectors were required for positive margin. In the morning and in the afternoon throughout the evening, interconnectors were traded to ease the import power flow constraints in the southeast of England. Throughout the 24 hours, BM actions were taken to solve power flow restriction in Scotland and in England.