

National Electricity Transmission System Status Report

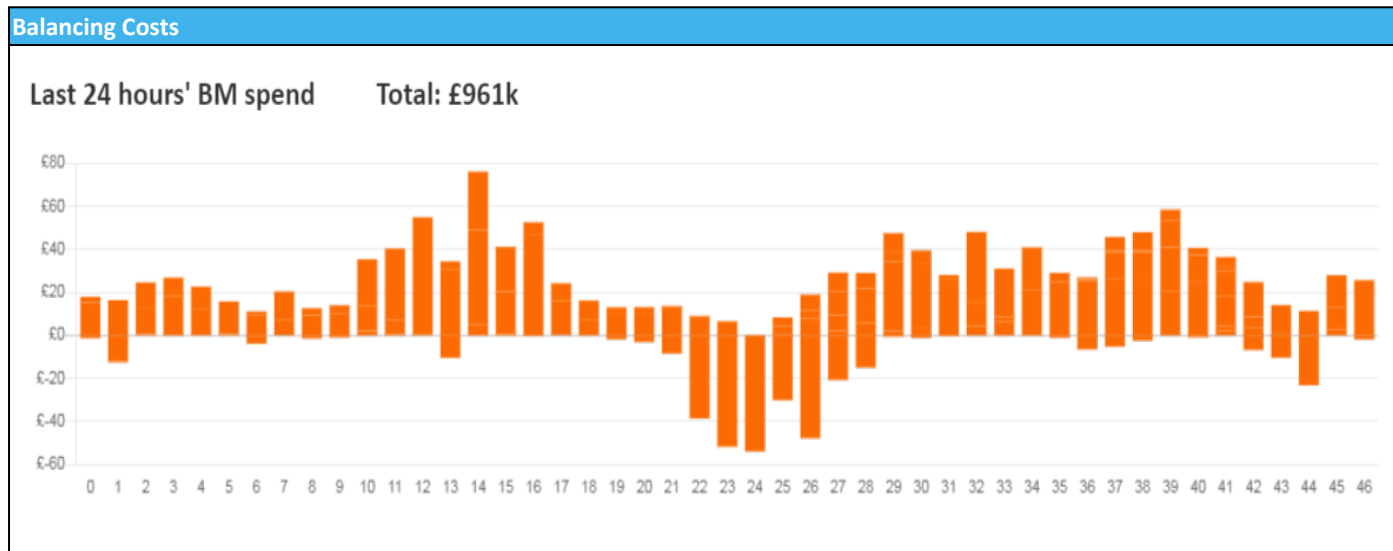


nationalgridESO

National Electricity Transmission System Status Report
Saturday 24 June 2023

Today's High Level Risk Status Forecast for the next 24h			
General Status		Voltage	
Demand		System Inertia	
System Margins		Weather	
Generation		Transmission	
Active Constraints			
System Warning			

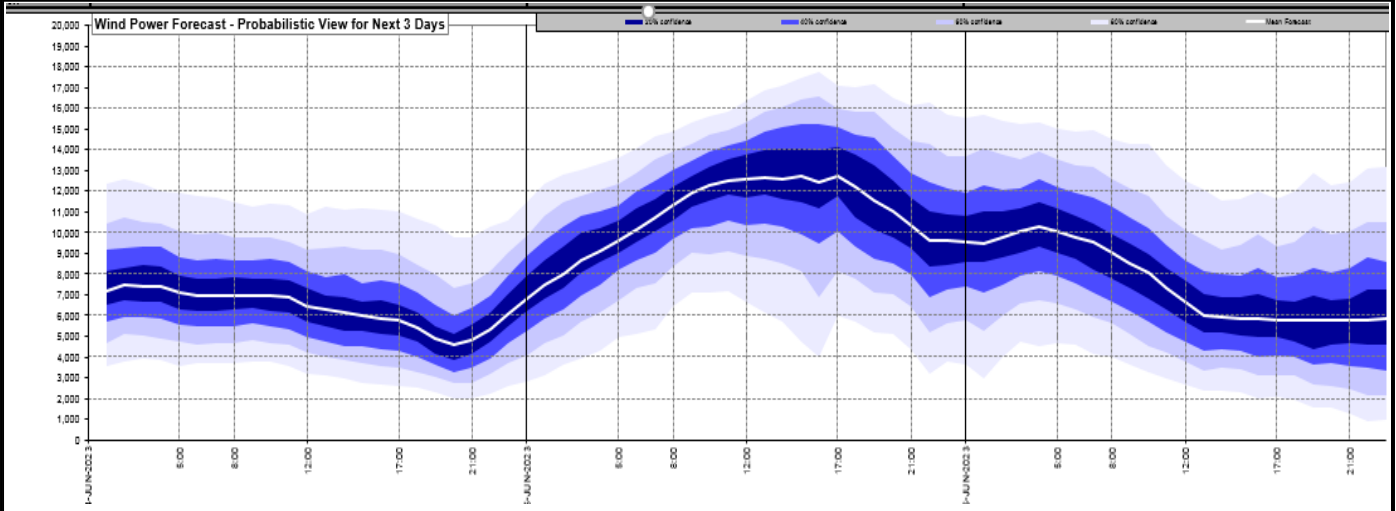
Today's Minimum De-Rated Margin	4,349 (SP 48)	
Current BMU Largest Loss Risk	Generation	1400 MW
	Demand	560 MW



Yesterday's Market Summary	
Cash Out Price (Max)	£140.00 (SP 2,3)
Cash Out Price (Min)	£60.00 (SP 27,28)
Peak Demand Yesterday	28,459 MW
Minimum Demand	16,934 MW

Interconnector Net Transfer Capacity (MWs)			
Today	Import	Export	Remarks
Netherlands (BritNed)	1100	1130	Fully Available
France (IFA)	2000	2000	Fully Available
Belgium (Nemo)	1000	1000	Fully Available
Ireland (EWIC)	500	530	Fully Available
France (ElecLink)	1014	1014	Fully Available
Northern Ireland (MOYLE)	500	500	Fully Available
Norway (NSL)	1400	1400	Fully Available
France (IFA2)	1014	1014	Fully Available

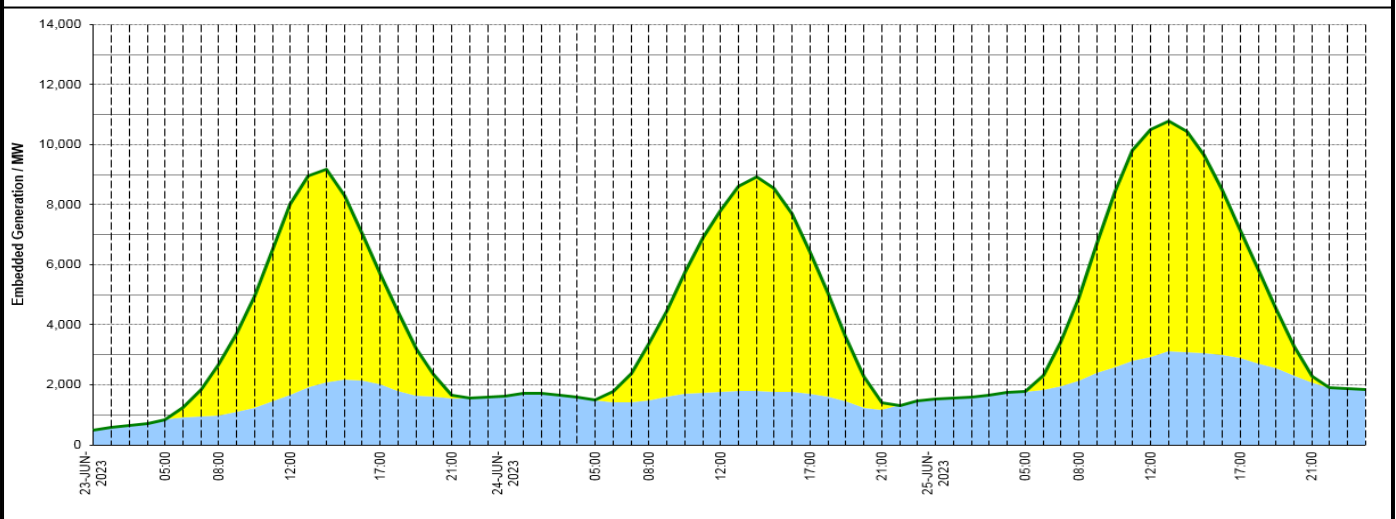
Wind Power Forecast



Expected embedded generation (MWs)

Embedded Generation Forecast

	23-JUN-2023					24-JUN-2023					25-JUN-2023						
	05:00	08:00	12:00	17:00	21:00	00:00	05:00	08:00	12:00	17:00	21:00	00:00	05:00	08:00	12:00	17:00	21:00
Solar (MW)	0	1688	6336	3706	116	0	0	1858	6038	4716	224	0	0	2759	7588	4232	205
Wind (MW)	843	970	1673	2001	1551	1614	1485	1489	1754	1699	1177	1516	1780	2139	2921	2897	2087
STOR (MW)	0	0	0	0	0	0	0	0	0	0	0	0	0	0	0	0	0
Total (MW)	843	2658	8009	5707	1667	1614	1485	3347	7792	6415	1401	1516	1780	4898	10509	7129	2292



Weather	Source	Commentary
Latest forecast (Summary)	Met Office SEPA Natural Resources Wales	<p>Today: Outbreaks of rain continuing northeastwards across Northern Ireland and Scotland with some thundery showers. Dry with hazy sunny spells across England and Wales. Very warm especially in the southeast.</p> <p>Tonight: Cloudy with outbreaks of rain in the northwest of the UK, turning persistent for a time before easing again towards dawn. Elsewhere, dry with clear spells, although some patchy fog developing towards dawn. A rather warm night for most.</p>
General Weather Concerns e.g. wind, rain, snow, flooding, GB Weather Warnings	Met Office Weather Warnings SEPA Natural Resources Wales	<p>UK Weather Warnings No weather warnings are in force for the UK</p> <p>Flood Warnings 0 flood warnings and 0 flood alerts issued for England. 0 flood warnings and 0 flood alerts issued for Scotland. 0 flood warnings and 0 flood alerts issued for Wales.</p>

Further Information	
BM Reports	https://www.bmreports.com
System Balancing Reports	https://www.nationalgrideso.com/balancing-data/system-balancing-reports
Forecast Volumes and Costs	https://www.nationalgrideso.com/balancing-data/forecast-volumes-and-costs
NGESO Insights	https://www.nationalgrideso.com/insights