

National Electricity Transmission System Status Report

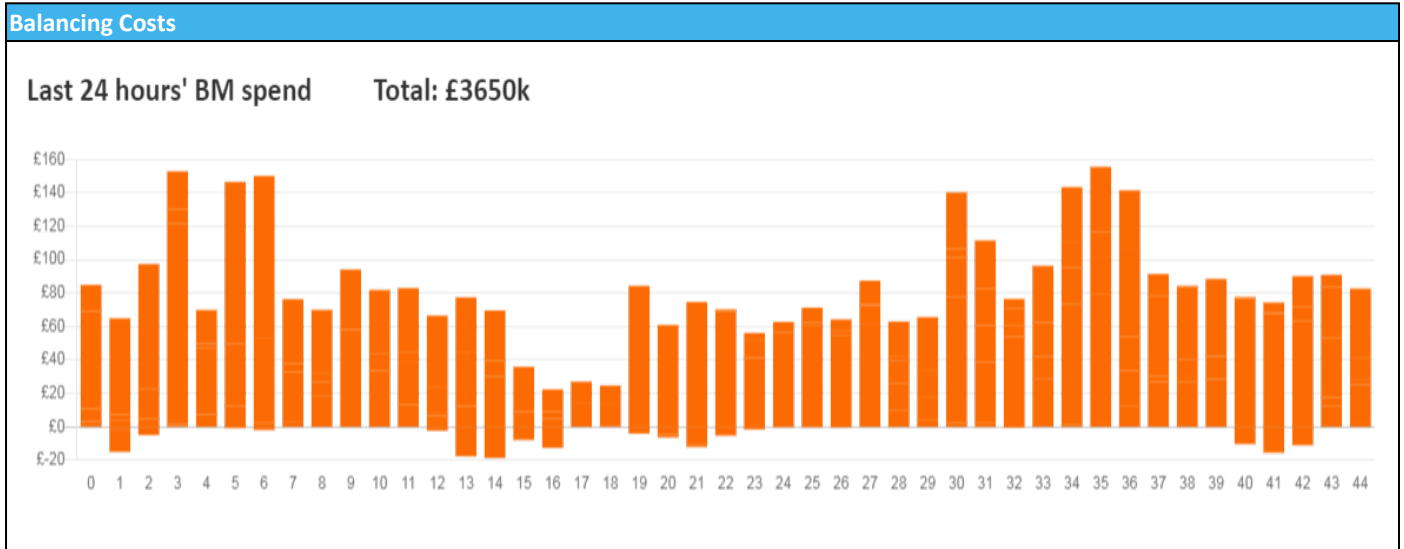


nationalgridESO

National Electricity Transmission System Status Report
Monday 27 March 2023

Today's High Level Risk Status Forecast for the next 24h			
General Status		Voltage	
Demand		System Inertia	
System Margins		Weather	
Generation		Transmission	
Active Constraints			
System Warning			

Today's Minimum De-Rated Margin	5,108 (SP 41)	
Current BMU Largest Loss Risk	Generation	1300 MW
	Demand	560 MW



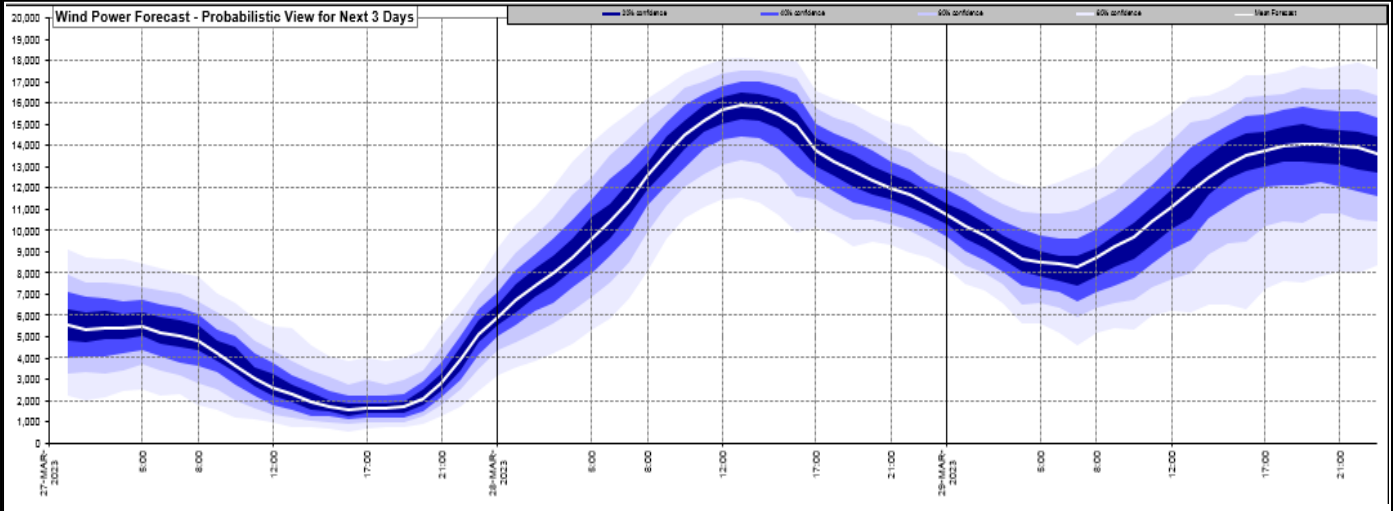
Yesterday's Market Summary

Cash Out Price (Max)	£ 199.00 (SP 23)
Cash Out Price (Min)	£ 42.00 (SP 7, 8)
Peak Demand Yesterday	34,498 MW
Minimum Demand	22,140 MW

Interconnector Net Transfer Capacity (MWs)

Today	Import	Export	Remarks
Netherlands (BritNed)	1100	1133	Fully Available
France (IFA)	1000	1000	Partially Available - Bipole 1 outage
Belgium (Nemo)	1000	1000	Fully Available
Ireland (EWIC)	500	530	Fully Available
France (ElecLink)	1014	1014	Fully Available
Northern Ireland (MOYLE)	500	500	Fully Available
Norway (NSL)	1100	1100	Partially Available
France (IFA2)	1014	1014	Fully Available

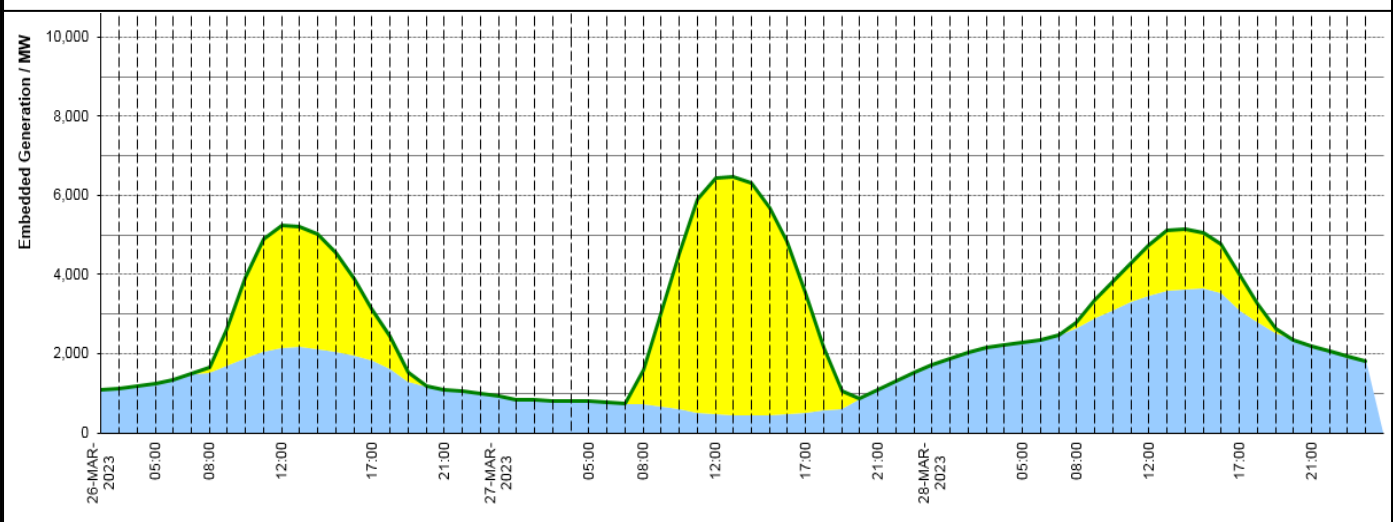
Wind Power Forecast



Expected embedded generation (MWs)

Embedded Generation Forecast

	26-MAR-2023					27-MAR-2023					28-MAR-2023						
	05:00	08:00	12:00	17:00	21:00	00:00	05:00	08:00	12:00	17:00	21:00	00:00	05:00	08:00	12:00	17:00	21:00
Solar (MW)	0	149	3111	1326	0	0	0	870	5960	3037	0	0	0	147	1290	944	0
Wind (MW)	1232	1511	2130	1814	1086	945	791	722	465	502	1100	1709	2286	2649	3452	3073	2195
STOR (MW)	0	0	0	0	0	0	0	0	0	0	0	0	0	0	0	0	0
Total (MW)	1232	1660	5241	3140	1086	945	791	1592	6425	3539	1100	1709	2286	2796	4742	4017	2195



Weather	Source	Commentary
Latest forecast (Summary)	Met Office SEPA Natural Resources Wales	<p>Today: A few light wintry showers affecting northeastern coasts dying out early. Cloudier in the southwest with some showers, although some brighter intervals developing. Cloudy for the Northern Isles too with some rain later. Otherwise, a fine, sunny day for most.</p> <p>Tonight: Most parts starting dry, although rain or sleet affecting Shetland. Cloud, rain and strengthening winds reaching western parts after midnight. An early frost in the north and east otherwise mild.</p>
General Weather Concerns e.g. wind, rain, snow, flooding, GB Weather Warnings	Met Office Weather Warnings SEPA Natural Resources Wales	<p>UK Weather Warnings No weather warnings in place</p> <p>Flood Warnings 43 flood alerts and 13 flood warnings for England. 0 flood alerts and 0 flood warnings for Scotland. 0 flood alerts and 0 flood warnings for Wales.</p>

Contains public sector information licensed under the Open Government Licence v1.0

Further Information	
BM Reports	https://www.bmreports.com
System Balancing Reports	https://www.nationalgrideso.com/balancing-data/system-balancing-reports
Forecast Volumes and Costs	https://www.nationalgrideso.com/balancing-data/forecast-volumes-and-costs
NGESO Insights	https://www.nationalgrideso.com/insights