

GSR029 - Review of Demand Connection Criteria to Align with EREC P2/7

10 October 2022

Online Meeting via Teams

WELCOME

A wide-angle landscape photograph of a mountain valley. In the foreground, a grassy hillside slopes down. Several bright, glowing orange-yellow lines, resembling energy or data streams, curve across the middle ground from the left towards the right. In the background, large, rugged mountains with patches of snow are visible under a dramatic sky with scattered clouds. The sun is low on the horizon, creating a warm, golden light across the scene.

nationalgridESO

Review of Action Log

Milly Lewis – National Grid ESO Code Administrator

| Number | Action | Owner | Status |
|--------|--|-----------|--------|
| 2 | To review AC comments and respond | BA | Open |
| 5 | TOs to provide feedback on the impact assessment for group demand using Method 1 and/or Method 2 (depending on the site) | TO Reps | Open |
| 6 | TOs to advise on current practice when assessing the contribution from large power stations | TO Reps | Open |
| 7 | TOs to assess the contribution from large power stations using the methodology in in EREP 130 and compare with the current practice to understand the impact for the change. | TO Reps | Open |
| 8 | Develop legal text to accommodate main concerns | AC/BA | Open |
| 9 | Consider and feedback ahead of next meeting re: Treatment of Storage | Workgroup | Open |

Requests for TOs

1. Impact assessment on changing group demand definition (net demand to gross demand).
2. Impact assessment on changing demand security contribution calculation
 1. Current assessment process
 2. How to use EREP 130



SQSS Modification
GSR029 P2/7 Alignment

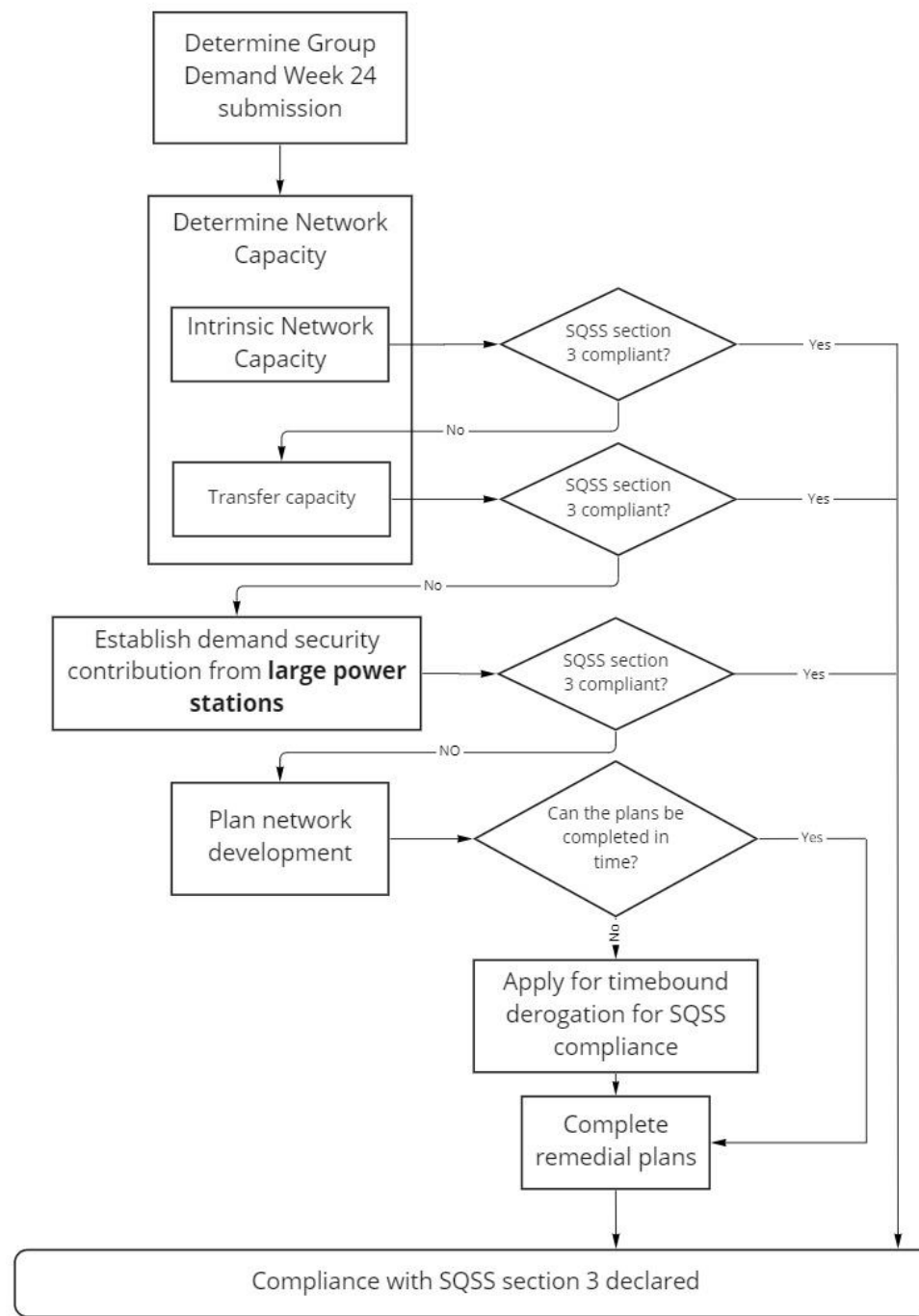
Can Li/Bieshoy Awad
NGESO

Contents

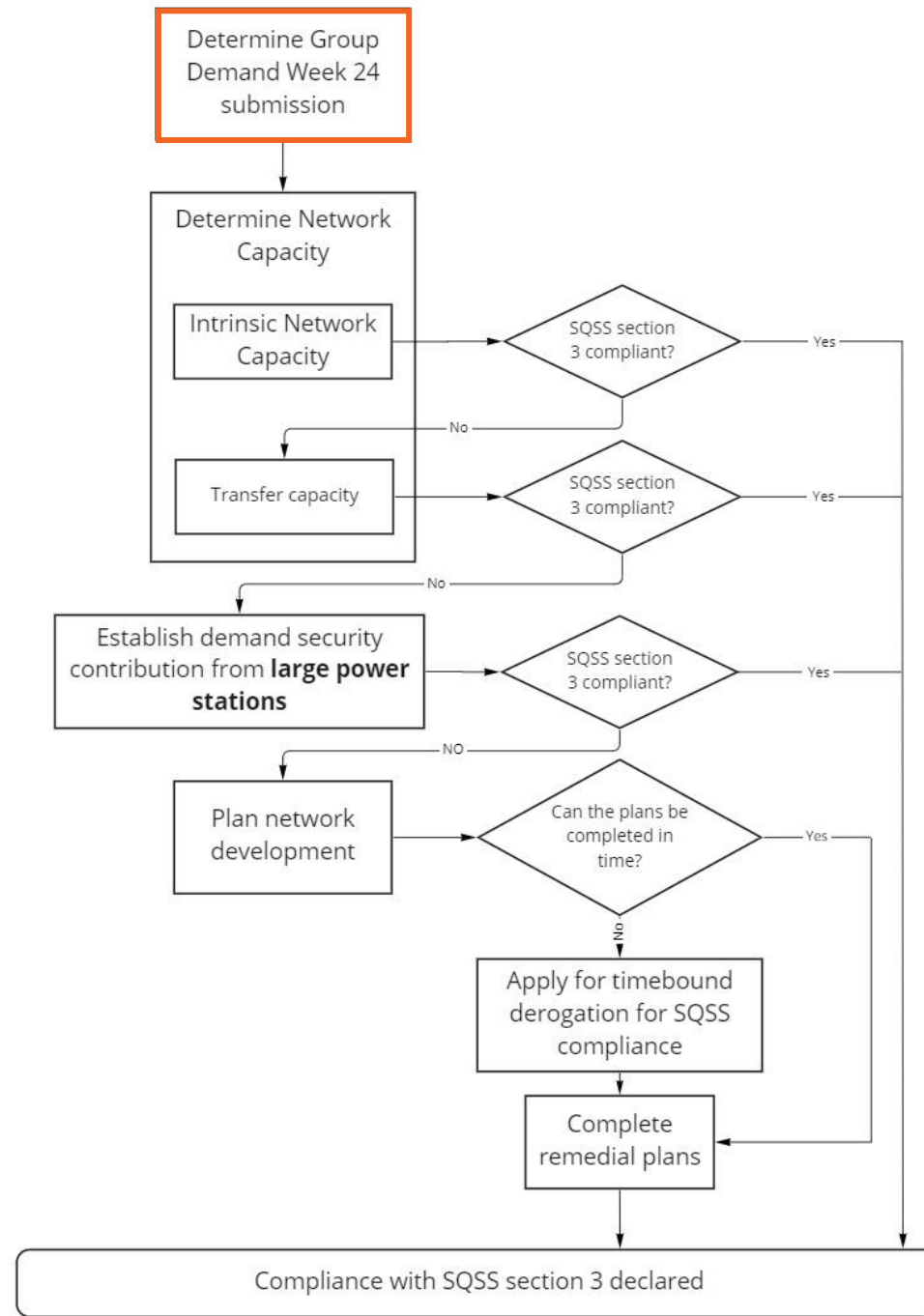
SQSS Section 3 Compliance process

- Current practice
- Proposed Changes

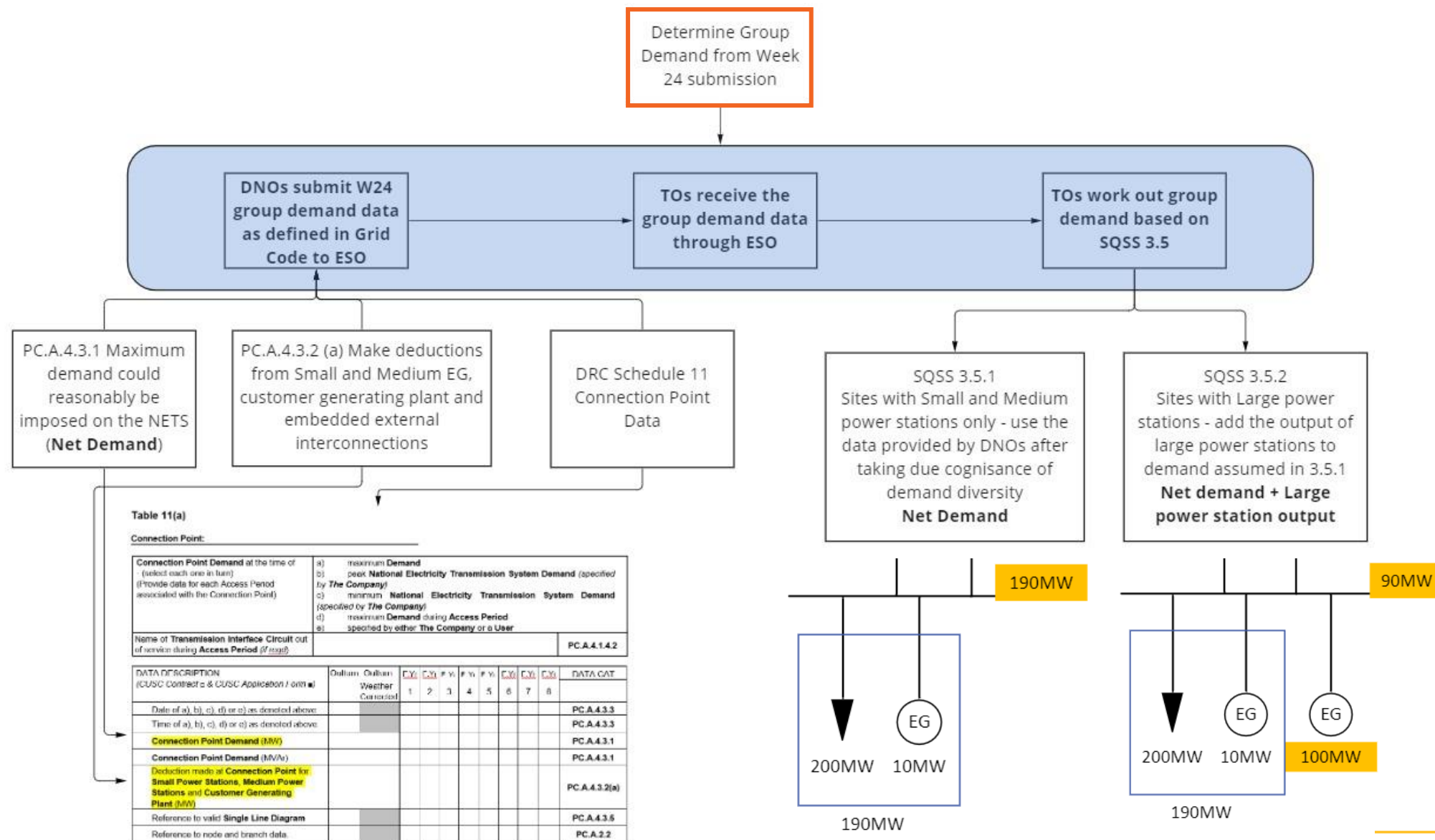
SQSS Section 3 Compliance Process – Current Practice



SQSS Section 3 Compliance Process – Current Practice



Group Demand Calculation – Current Practice



Week 24 Data Submission – Current Practice

Table 11(a)

Connection Point:

| | |
|---|---|
| Connection Point Demand at the time of - (select each one in turn) (Provide data for each Access Period associated with the Connection Point) | a) maximum Demand b) peak National Electricity Transmission System Demand (<i>specified by The Company</i>) c) minimum National Electricity Transmission System Demand (<i>specified by The Company</i>) d) maximum Demand during Access Period e) specified by either The Company or a User |
| Name of Transmission Interface Circuit out of service during Access Period (<i>if reqd.</i>). | PC.A.4.1.4.2 |

| DATA DESCRIPTION (CUSC Contract □ & CUSC Application Form ■) | Outturn | Outturn Weather Corrected | F.Yr 1 | F.Yr 2 | F. Yr. 3 | F. Yr. 4 | F. Yr. 5 | F.Yr 6 | F.Yr 7 | F.Yr 8 | DATA CAT |
|--|---------|---------------------------------|-----------|-----------|-------------|-------------|-------------|-----------|-----------|-----------|---------------|
| Date of a), b), c), d) or e) as denoted above. | | | | | | | | | | | PC.A.4.3.3 |
| Time of a), b), c), d) or e) as denoted above. | | | | | | | | | | | PC.A.4.3.3 |
| Connection Point Demand (MW) | | | | | | | | | | | PC.A.4.3.1 |
| Connection Point Demand (MVA_r) | | | | | | | | | | | PC.A.4.3.1 |
| Deduction made at Connection Point for Small Power Stations, Medium Power Stations and Customer Generating Plant (MW) | | | | | | | | | | | PC.A.4.3.2(a) |
| Reference to valid Single Line Diagram | | | | | | | | | | | PC.A.4.3.5 |
| Reference to node and branch data. | | | | | | | | | | | PC.A.2.2 |

Group Demand Calculation – Proposed Changes

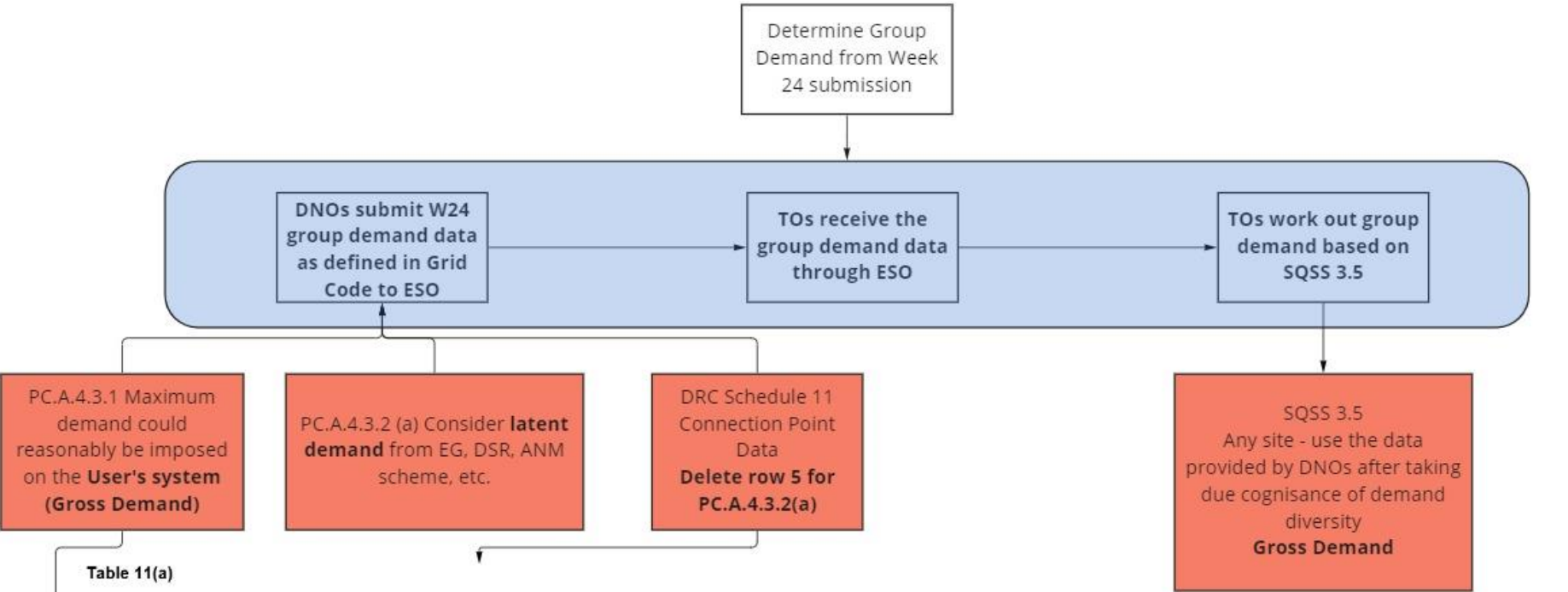
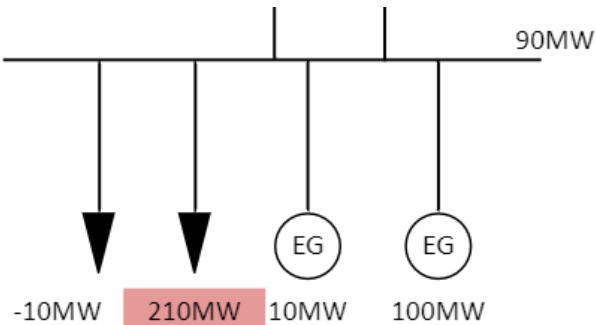


Table 11(a)

Connection Point:

| | |
|--|--|
| Connection Point Demand at the time of - (select each one in turn) (Provide data for each Access Period associated with the Connection Point) | a) maximum Demand b) peak National Electricity Transmission System Demand (specified by The Company) c) minimum National Electricity Transmission System Demand (specified by The Company) d) maximum Demand during Access Period e) specified by either The Company or a User |
| Name of Transmission Interface Circuit out of service during Access Period (if reqd) | PC.A.4.1.4.2 |

| DATA DESCRIPTION (CUSC Contract & CUSC Application Form) | Outturn | Outturn Weather Corrected | E.Yr | E.Yr | F.Yr | F.Yr | F.Yr | F.Yr | E.Yr | E.Yr | E.Yr | DATA CAT |
|---|---------|---------------------------------|------|------|------|------|------|------|------|------|------|---------------|
| Date of a), b), c), d) or e) as denoted above. | | | 1 | 2 | 3 | 4 | 5 | 6 | 7 | 8 | | PC.A.4.3.3 |
| Time of a), b), c), d) or e) as denoted above. | | | | | | | | | | | | PC.A.4.3.3 |
| Connection Point Demand (MW) | | | | | | | | | | | | PC.A.4.3.1 |
| Connection Point Demand (MVar) | | | | | | | | | | | | PC.A.4.3.1 |
| Deduction made at Connection Point for Small Power Stations, Medium Power Stations and Customer Generating Plant (MW) | | | | | | | | | | | | PC.A.4.3.2(a) |
| Reference to valid Single Line Diagram | | | | | | | | | | | | PC.A.4.3.5 |
| Reference to node and branch data | | | | | | | | | | | | PC.A.2.2 |



Week 24 Data Submission – Proposed Changes

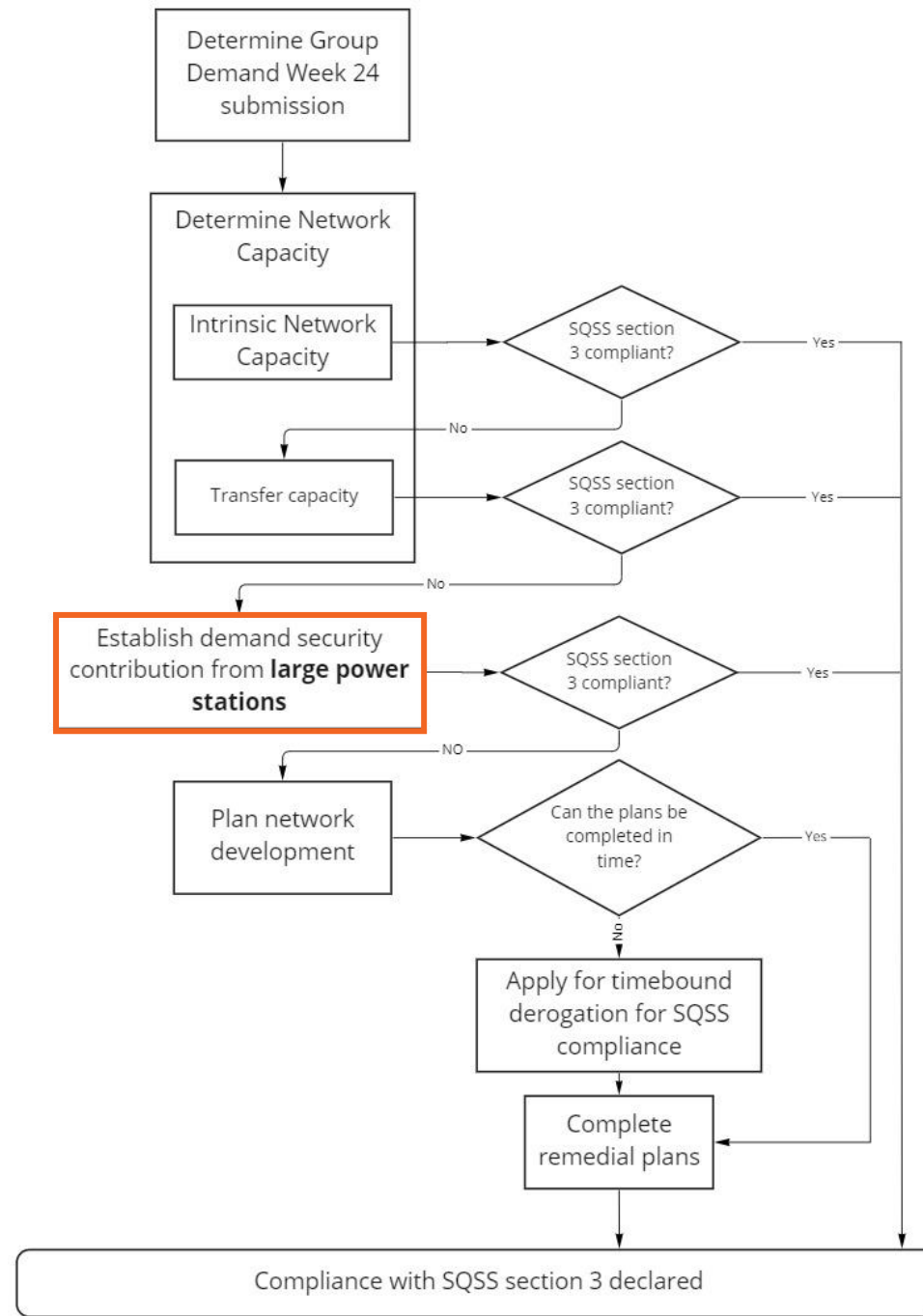
Table 11(a)

Connection Point:

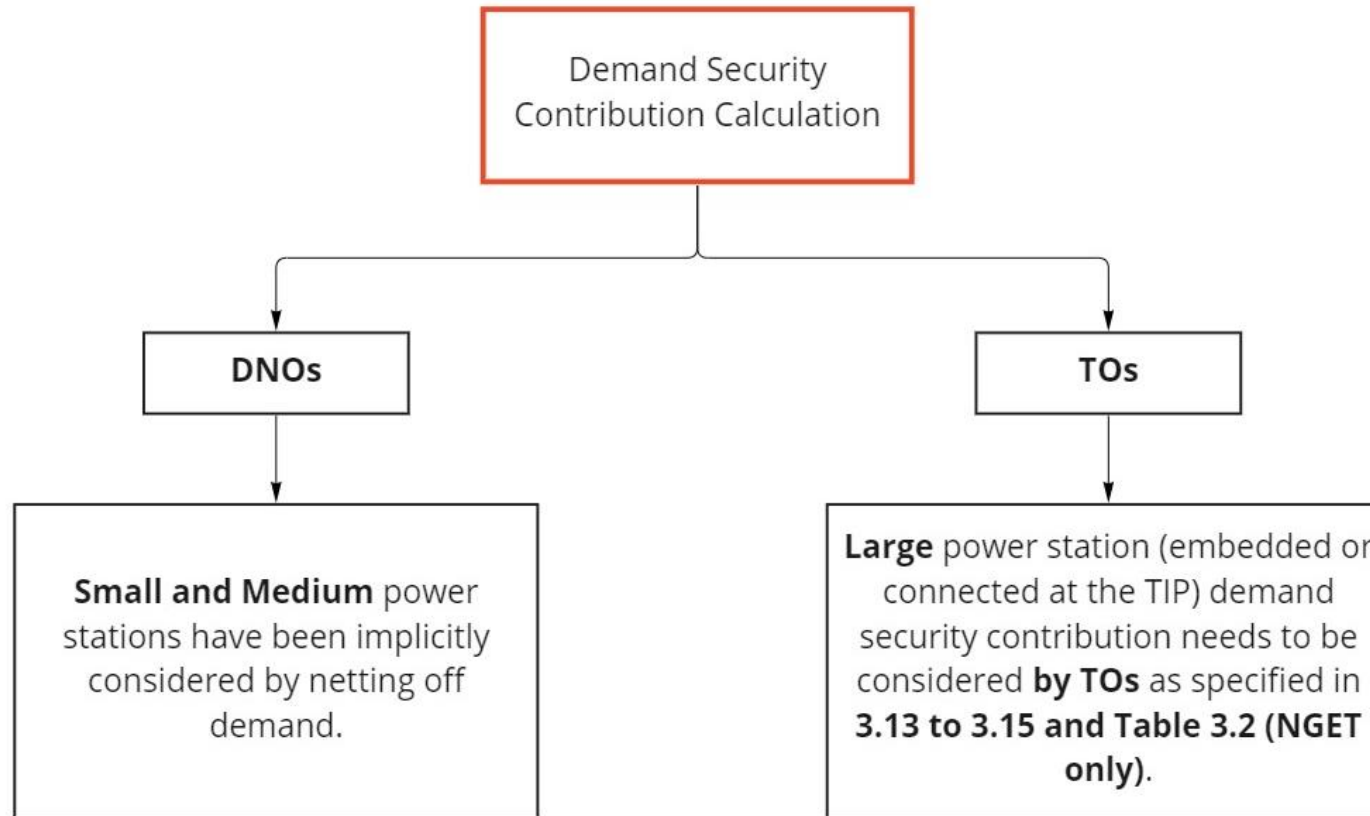
| | |
|---|---|
| Connection Point Demand at the time of - (select each one in turn) (Provide data for each Access Period associated with the Connection Point) | a) maximum Demand b) peak National Electricity Transmission System Demand (<i>specified by The Company</i>) c) minimum National Electricity Transmission System Demand (<i>specified by The Company</i>) d) maximum Demand during Access Period e) specified by either The Company or a User |
| Name of Transmission Interface Circuit out of service during Access Period (<i>if reqd.</i>). | PC.A.4.1.4.2 |

| DATA DESCRIPTION (CUSC Contract □ & CUSC Application Form ■) | Outturn | Outturn Weather Corrected | F.Yr 1 | F.Yr 2 | F. Yr. 3 | F. Yr. 4 | F. Yr. 5 | F.Yr 6 | F.Yr 7 | F.Yr 8 | DATA CAT |
|---|---------|---------------------------------|-----------|-----------|-------------|-------------|-------------|-----------|-----------|-----------|--------------------------|
| Date of a), b), c), d) or e) as denoted above. | | | | | | | | | | | PC.A.4.3.3 |
| Time of a), b), c), d) or e) as denoted above. | | | | | | | | | | | PC.A.4.3.3 |
| Connection Point Demand (MW) | | | | | | | | | | | PC.A.4.3.1 |
| Connection Point Demand (MVA_r) | | | | | | | | | | | PC.A.4.3.1 |
| Deduction made at Connection Point for Small Power Stations, Medium Power Stations and Customer Generating Plant (MW) | | | | | | | | | | | PC.A.4.3.2(a) |
| Reference to valid Single Line Diagram | | | | | | | | | | | PC.A.4.3.5 |
| Reference to node and branch data. | | | | | | | | | | | PC.A.2.2 |

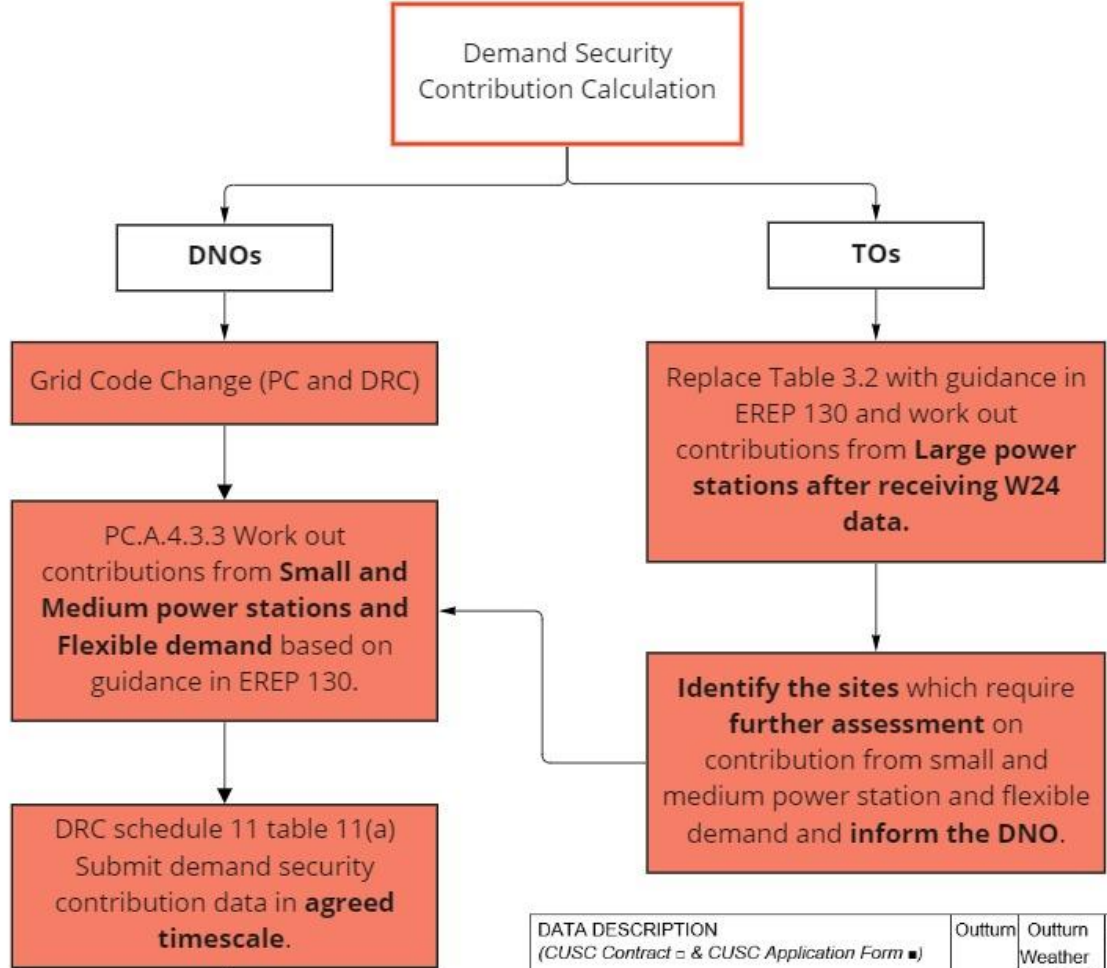
SQSS Section 3 Compliance Process – Current Practice



Demand Security Contribution – Current Practice



Demand Security Contribution – Proposed Changes



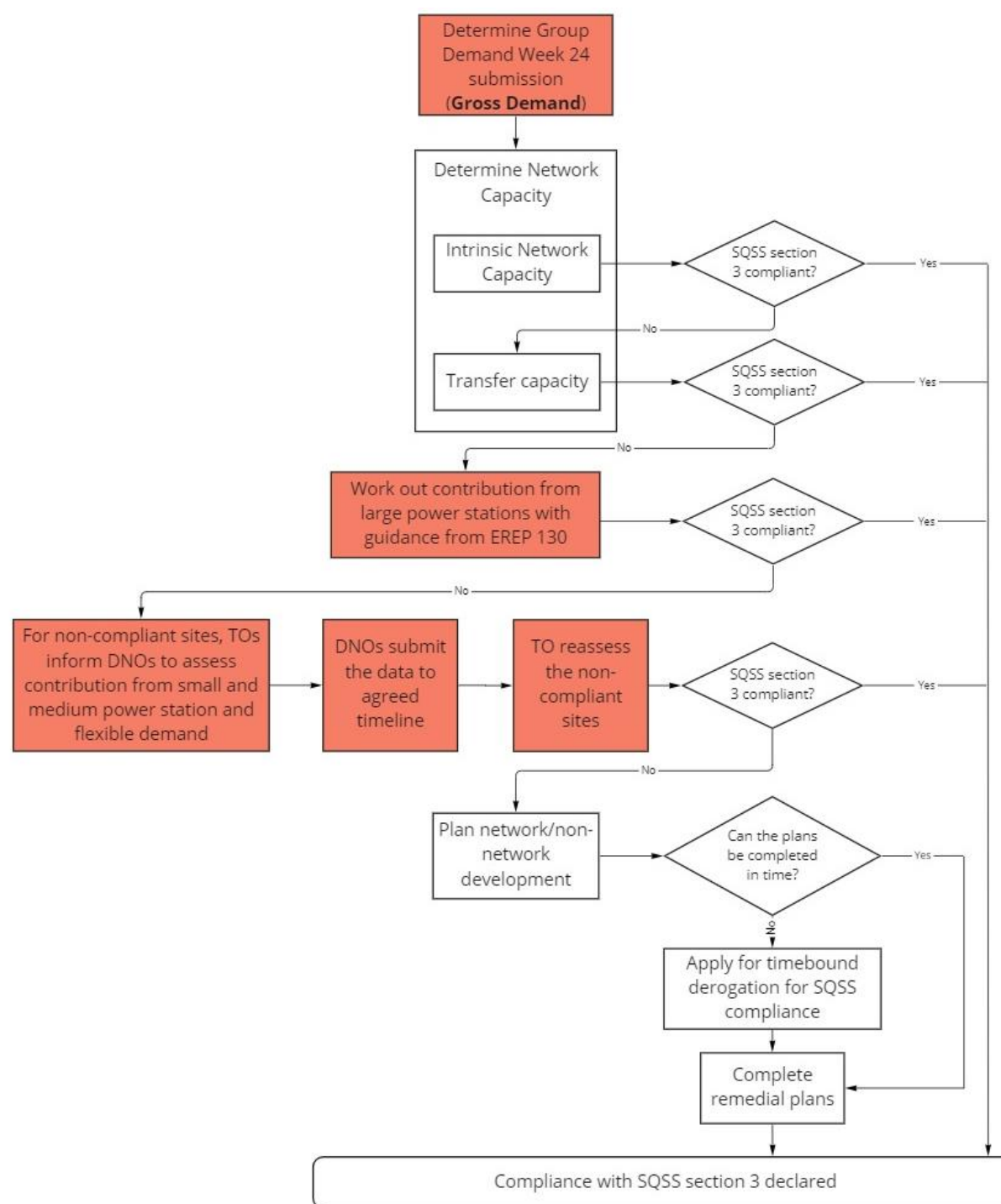
| DATA DESCRIPTION (CUSC Contract = & CUSC Application Form ■) | Outturn | Outturn Weather Corrected | F.Yr 1 | F.Yr 2 | F.Yr 3 | F.Yr 4 | F.Yr 5 | F.Yr 6 | F.Yr 7 | F.Yr 8 | DATA CAT |
|--|---------|---------------------------------|-----------|-----------|-----------|-----------|-----------|-----------|-----------|-----------|------------|
| Date of a), b), c), d) or e) as denoted above. | | | | | | | | | | | PC.A.4.3.3 |
| Time of a), b), c), d) or e) as denoted above. | | | | | | | | | | | PC.A.4.3.3 |
| Connection Point Demand (MW) | | | | | | | | | | | PC.A.4.3.1 |
| Connection Point Demand (MVar) | | | | | | | | | | | PC.A.4.3.1 |
| Demand Security Contribution from Small Power Stations, Medium Power Stations and Flexible Demand (MW) | | | | | | | | | | | PC.A.4.3.3 |
| Reference to valid Single Line Diagram | | | | | | | | | | | PC.A.4.3.5 |
| Reference to node and branch data. | | | | | | | | | | | PC.A.2.2 |

Demand Security Contribution – Proposed Changes

DNO data submission

| DATA DESCRIPTION (CUSC Contract □ & CUSC Application Form ■) | Outturn | Outturn Weather Corrected | F.Yr 1 | F.Yr 2 | F. Yr. 3 | F. Yr. 4 | F. Yr. 5 | F.Yr 6 | F.Yr 7 | F.Yr 8 | DATA CAT |
|---|---------|---------------------------------|-----------|-----------|-------------|-------------|-------------|-----------|-----------|-----------|------------|
| Date of a), b), c), d) or e) as denoted above. | | | | | | | | | | | PC.A.4.3.3 |
| Time of a), b), c), d) or e) as denoted above. | | | | | | | | | | | PC.A.4.3.3 |
| Connection Point Demand (MW) | | | | | | | | | | | PC.A.4.3.1 |
| Connection Point Demand (MVA_r) | | | | | | | | | | | PC.A.4.3.1 |
| Demand Security Contribution from Small Power Stations, Medium Power Stations and Flexible Demand (MW) | | | | | | | | | | | PC.A.4.3.3 |
| Reference to valid Single Line Diagram | | | | | | | | | | | PC.A.4.3.5 |
| Reference to node and branch data. | | | | | | | | | | | PC.A.2.2 |

SQSS Section 3 Compliance Process – Current Practice





Terms of Reference

Milly Lewis – National Grid ESO Code Administrator

GSR029 – Terms of Reference

| Workgroup Term of Reference |
|--|
| Consider whether the guidance provided in EREP 130 for assessing the security contribution to the distribution system is suitable for assessing the security contribution to the transmission system |
| Consider the option to review the analysis undertaken by Imperial College London when developing EREP 130 |
| Given the materiality of typical BESS installations, provided specific guidance on the assessment of BESS demand on the transmission system and assessing the security contribution from it (noting that the security contribution from a BESS is not included in the scope of EREP 130) |
| Consider if there are any alternative proposals |
| Consider if there are consequential changes to other codes, such as the Grid Code in relation to planning data, |
| [ToR determined by Panel] |

The slide features several decorative yellow lines. In the top left, there are several thin, curved lines that sweep upwards and to the right. In the bottom right, there are four thick, parallel diagonal lines that sweep upwards and to the right, starting from the bottom left and extending towards the top right. The background is a solid light blue.

Next Steps

Milly Lewis – National Grid ESO Code Administrator