

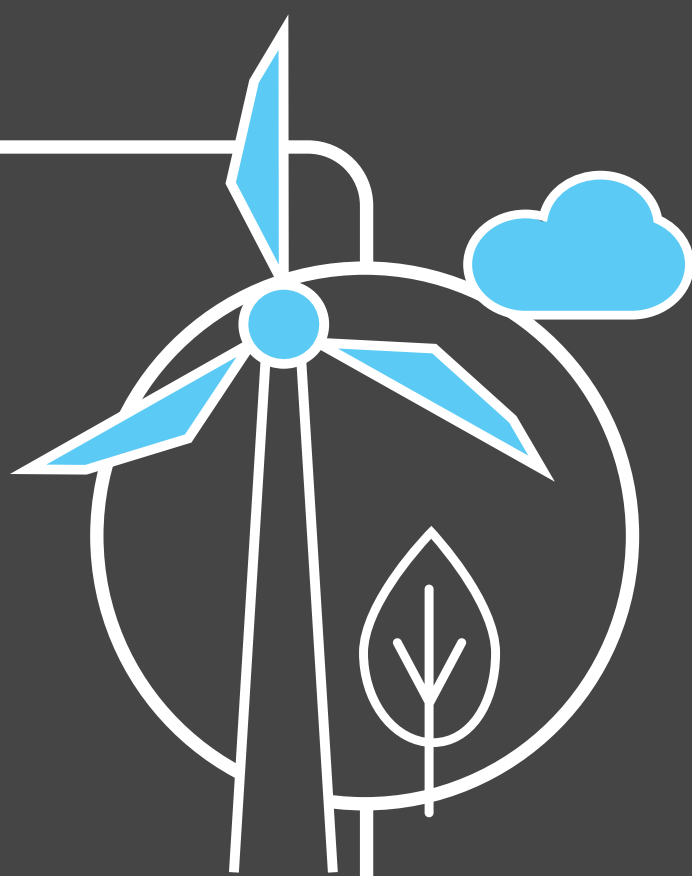
Britain's Electricity Explained: August 2022

nationalgridESO



Gas	47.7%
Wind	15.9%
Nuclear	15.1%
Biomass	6.2%
Coal	0.9%
Solar	7.2%
Imports	4.5%
Hydro	1.2%
Storage	1.3%

Zero carbon



39% of electricity came from zero carbon sources
76% peak zero carbon share

Carbon intensity



220 gCO₂/kWh average  Greenest time of the month
 11:30pm on 1st August

Coal



0.9% use this month
 This time **5 years ago** coal usage was **2.1%**
112 consecutive coal free hours

Imports & exports

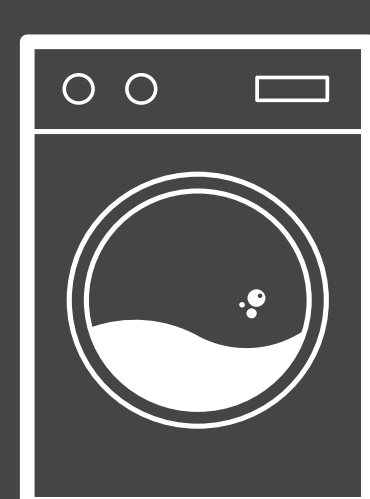


Energy in
2001 GWh



Energy out
3901 GWh

Demand



22 TWh run through network (that's 22 billion washing machine cycles).
 Peak demand time was 5:30pm on 22nd August.

View in real-time



To view our data in real-time, please download the ESO app for Apple or Android.
 Or visit carbonintensity.org.uk