

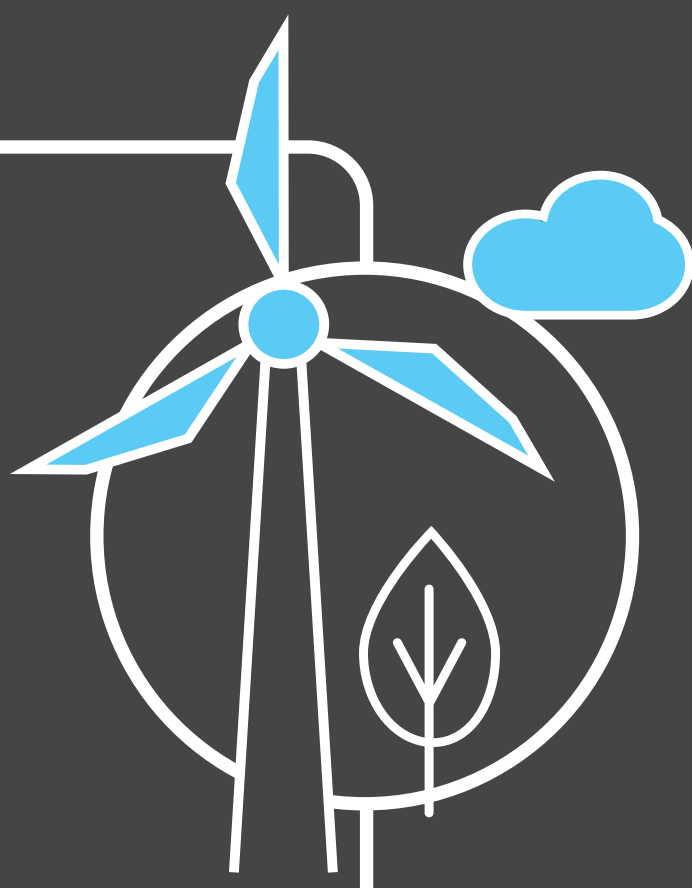
# Britain's Electricity Explained: July 2022

nationalgridESO



● Gas	43.7%
● Wind	19.1%
● Nuclear	15.4%
● Biomass	5.9%
● Coal	1.7%
● Solar	7.3%
● Imports	4.6%
● Hydro	1.3%
● Storage	1.1%

## Zero carbon



**43%** of electricity came from zero carbon sources  
**80%** peak zero carbon share

## Carbon intensity



**209** gCO<sub>2</sub>/kWh average  Greenest time of the month  
 9:30am on 24th July

## Coal



**1.7%** use this month  
 This time **5 years ago** coal usage was **1.8%**  
**47** consecutive coal free hours

## Imports & exports

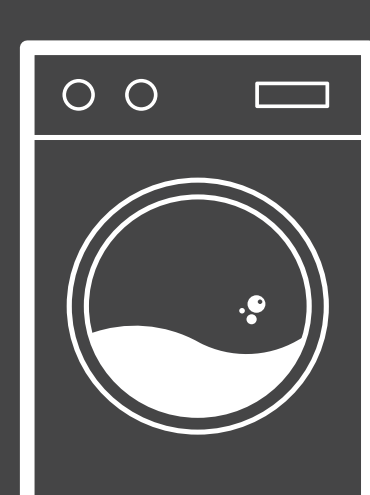


Energy in  
**2123**  
**GWh**



Energy out  
**5091**  
**GWh**

## Demand



**23 TWh** run through network  
 (that's 23 billion washing machine cycles).  
 Peak demand time was 6pm on 19th July.

## View in real-time



To view our data in real-time, please download the ESO app for Apple or Android.  
 Or visit [carbonintensity.org.uk](https://carbonintensity.org.uk)