

# National Electricity Transmission System Status Report

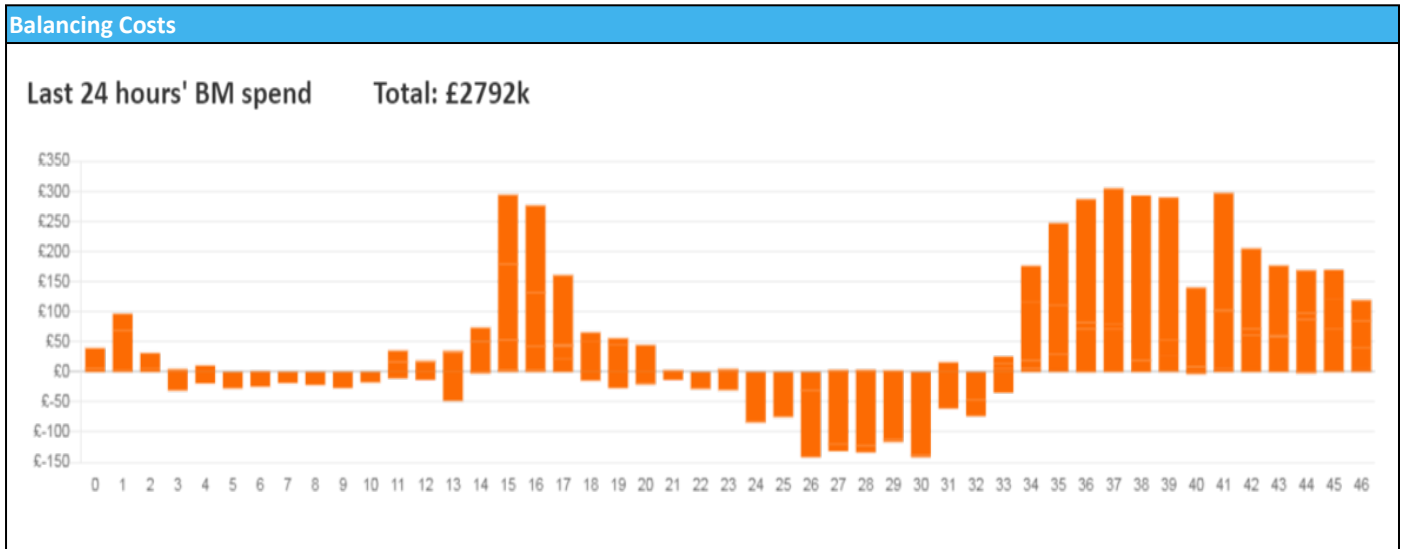


nationalgridESO

**National Electricity Transmission System Status Report**  
Tuesday 02 August 2022

Today's High Level Risk Status Forecast for the next 24h			
General Status		Voltage	
Demand		System Inertia	
System Margins		Weather	
Generation		Transmission	
Active Constraints			
<a href="#">System Warning</a>			

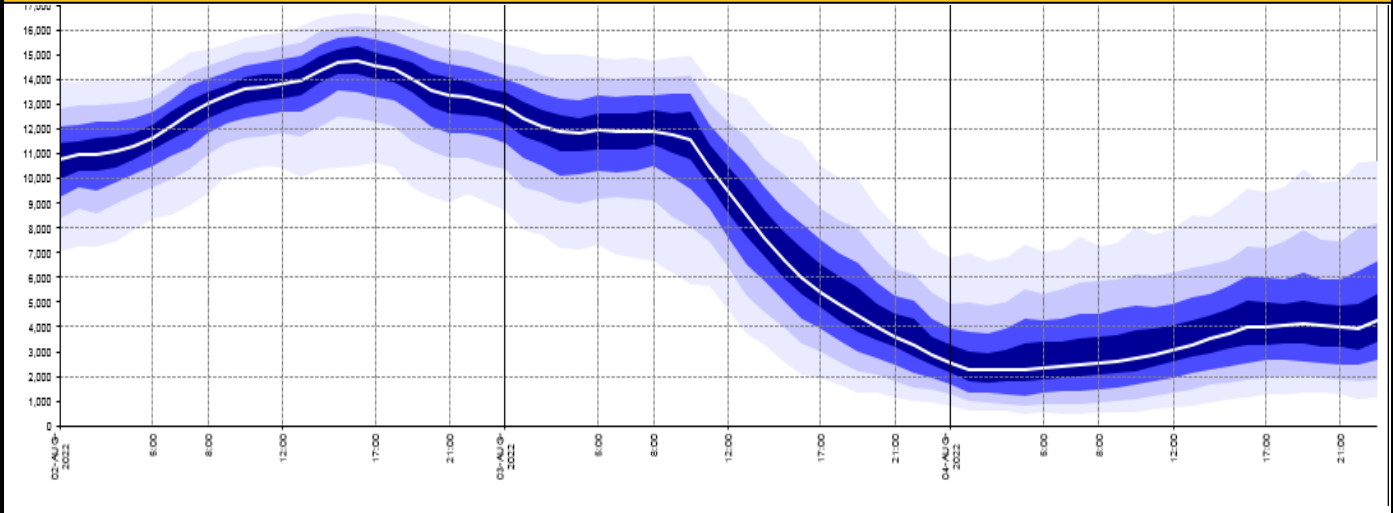
<a href="#">Today's Minimum De-Rated Margin</a>	12,914 (SP 39)	
Current BMU Largest Loss Risk	Generation	1500 MW
	Demand	1050 MW



Yesterday's Market Summary	
<a href="#">Cash Out Price (Max)</a>	£424.90 (SP 5)
<a href="#">Cash Out Price (Min)</a>	£172.00 (SP 29)
<a href="#">Peak Demand Yesterday</a>	28,635 MW
Minimum Demand	17,100 MW

Interconnector Net Transfer Capacity (MWs)			
Today	Import	Export	Remarks
Netherlands (BritNed)	1100	1133	Fully Available
France (IFA2)	1014	1014	Fully Available
Belgium (Nemo)	1020	1025	Fully Available
Ireland (EWIC)	500	530	Fully Available
France (ElecLink)	0	0	Not Available - Planned Outage
France (IFA)	1000	1000	Partially Available
Northern Ireland (MOYLE)	244	250	Partially Available
Norway (NSL)	1150	1100	ESO NTC restriction

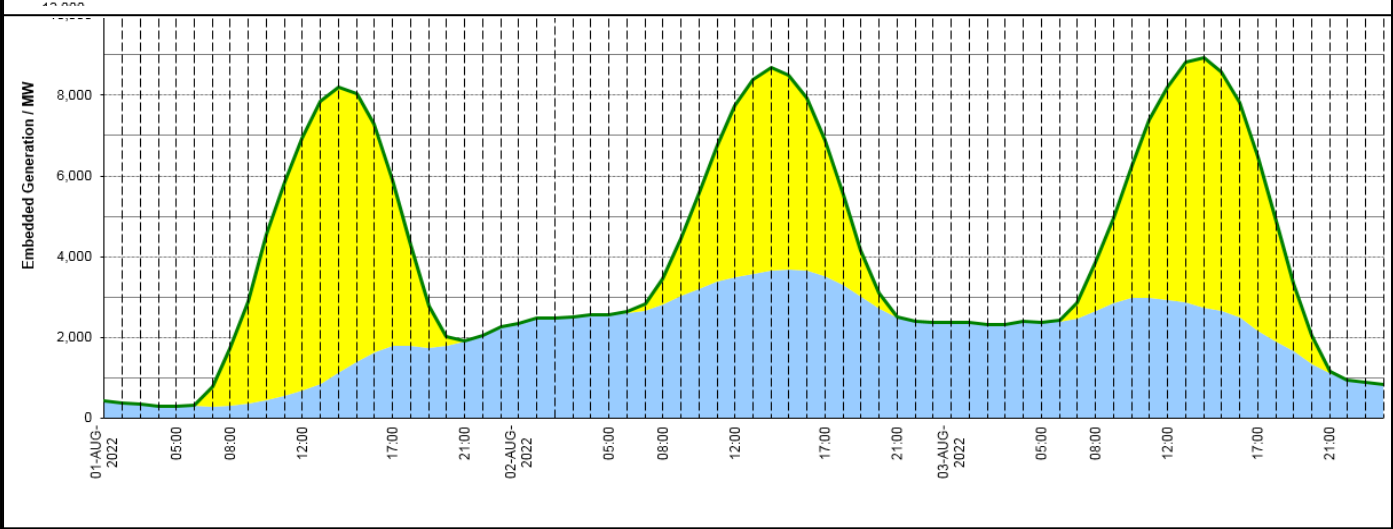
**Wind Power Forecast**



**Expected embedded generation (MWs)**

**Embedded Generation Forecast**

	01-AUG-2022					02-AUG-2022					03-AUG-2022						
	05:00	08:00	12:00	17:00	21:00	00:00	05:00	08:00	12:00	17:00	21:00	00:00	05:00	08:00	12:00	17:00	21:00
Solar (MW)	0	1399	6249	4104	2	0	0	626	4238	3356	0	0	0	1181	5292	4296	44
Wind (MW)	304	313	673	1800	1907	2345	2570	2820	3497	3522	2502	2369	2374	2663	2919	2168	1105
STOR (MW)	0	0	0	0	0	0	0	0	0	0	0	0	0	0	0	0	0
<b>Total (MW)</b>	<b>304</b>	<b>1712</b>	<b>6922</b>	<b>5904</b>	<b>1909</b>	<b>2345</b>	<b>2570</b>	<b>3446</b>	<b>7735</b>	<b>6878</b>	<b>2502</b>	<b>2369</b>	<b>2374</b>	<b>3844</b>	<b>8211</b>	<b>6464</b>	<b>1149</b>



Weather	Source	Commentary
Latest forecast (Summary)	<a href="#">Met Office</a> <a href="#">SEPA</a> <a href="#">Natural Resources Wales</a>	<p><b>Today:</b> Outbreaks of rain and drizzle in the northwest spreading eastwards, heavy at times, especially on hills, with extensive low cloud and hill fog. Remaining dry across most of southern and eastern England. Warm and muggy for many.</p> <p><b>Tonight:</b> Occasional rain edging southwards into central parts whilst skies brighten across Scotland and Northern Ireland. Staying dry, bright and very warm across southern and eastern England, and feeling humid.</p>
General Weather Concerns e.g. wind, rain, snow, flooding, GB Weather Warnings	<a href="#">Met Office</a> <a href="#">Weather Warnings</a> <a href="#">SEPA</a> <a href="#">Natural Resources Wales</a>	<p><b>UK Weather Warnings</b> No weather warnings are in force for the UK.</p> <p><b>Flood Warnings</b> No flood warnings or alerts in Scotland. No flood warnings or alerts in Wales. No flood warnings 2 alerts in England.</p>

Contains public sector information licensed under the Open Government Licence v1.0

Further Information	
BM Reports	<a href="https://www.bmreports.com">https://www.bmreports.com</a>
System Balancing Reports	<a href="https://www.nationalgrideso.com/balancing-data/system-balancing-reports">https://www.nationalgrideso.com/balancing-data/system-balancing-reports</a>
Forecast Volumes and Costs	<a href="https://www.nationalgrideso.com/balancing-data/forecast-volumes-and-costs">https://www.nationalgrideso.com/balancing-data/forecast-volumes-and-costs</a>
NGESO Insights	<a href="https://www.nationalgrideso.com/insights">https://www.nationalgrideso.com/insights</a>