

**National Electricity
Transmission System Status Report**

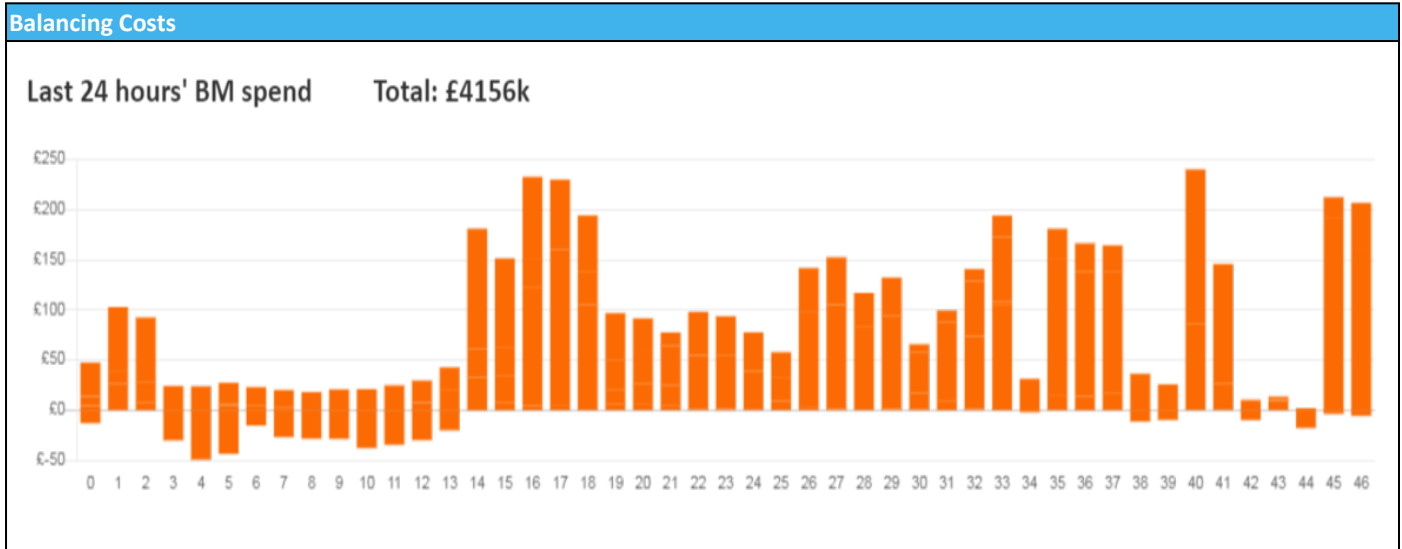


national**grid**ESO

National Electricity Transmission System Status Report
Friday 24 June 2022

| Today's High Level Risk Status Forecast for the next 24h | | | |
|--|--|----------------|--|
| General Status | | Voltage | |
| Demand | | System Inertia | |
| System Margins | | Weather | |
| Generation | | Transmission | |
| Active Constraints | | | |
| System Warning | | | |

| | | |
|---|--------------|---------|
| Today's Minimum De-Rated Margin | 8159 (SP 36) | |
| Current BMU Largest Loss Risk | Generation | 1500 MW |
| | Demand | 1050 MW |



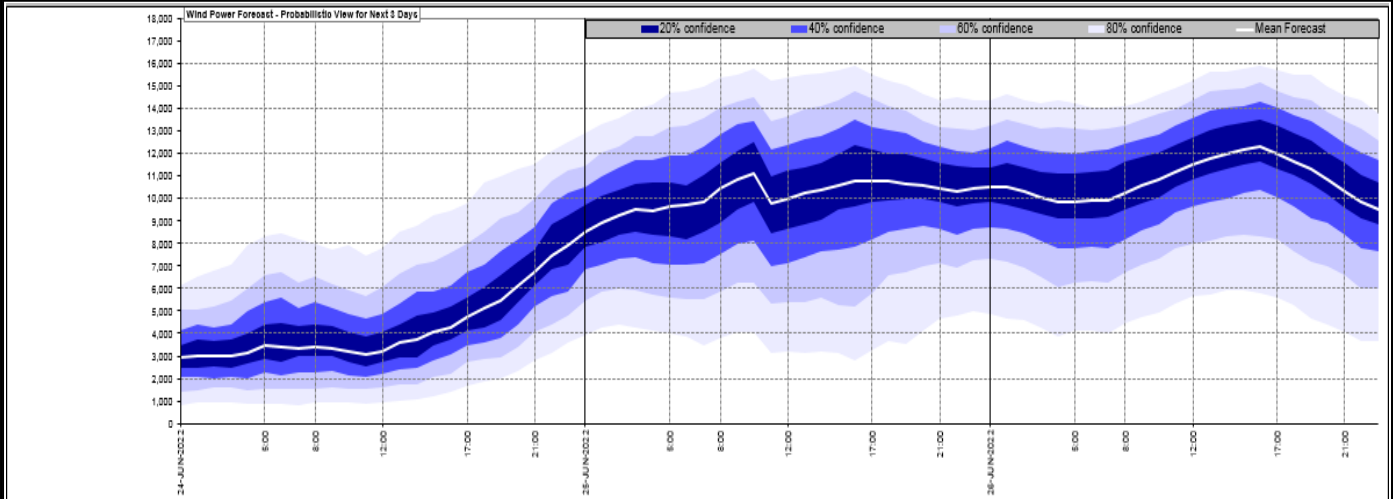
Yesterday's Market Summary

| | |
|---------------------------------------|-----------------|
| Cash Out Price (Max) | £330.38 (SP 16) |
| Cash Out Price (Min) | £123.00 (SP 2) |
| Peak Demand Yesterday | 32,568MW |
| Minimum Demand | 19,275 MW |

Interconnector Net Transfer Capacity (MWs)

| Today | Import | Export | Remarks |
|--------------------------|--------|--------|---|
| Netherlands (BritNed) | 1100 | 1133 | Fully Available |
| France (IFA2) | 1014 | 1014 | Fully Available |
| Belgium (Nemo) | 1020 | 1025 | Fully Available |
| Ireland (EWIC) | 500 | 530 | Fully Available |
| Northern Ireland (MOYLE) | 244 | 250 | Partially Available |
| Norway (NSL) | 1400 | 900 | Fully Available, ESO NTC restriction for Export |
| France (ElecLink) | 1014 | 900 | Fully Available, ESO NTC restriction for Export |
| France (IFA) | 1000 | 1000 | Partially Available |

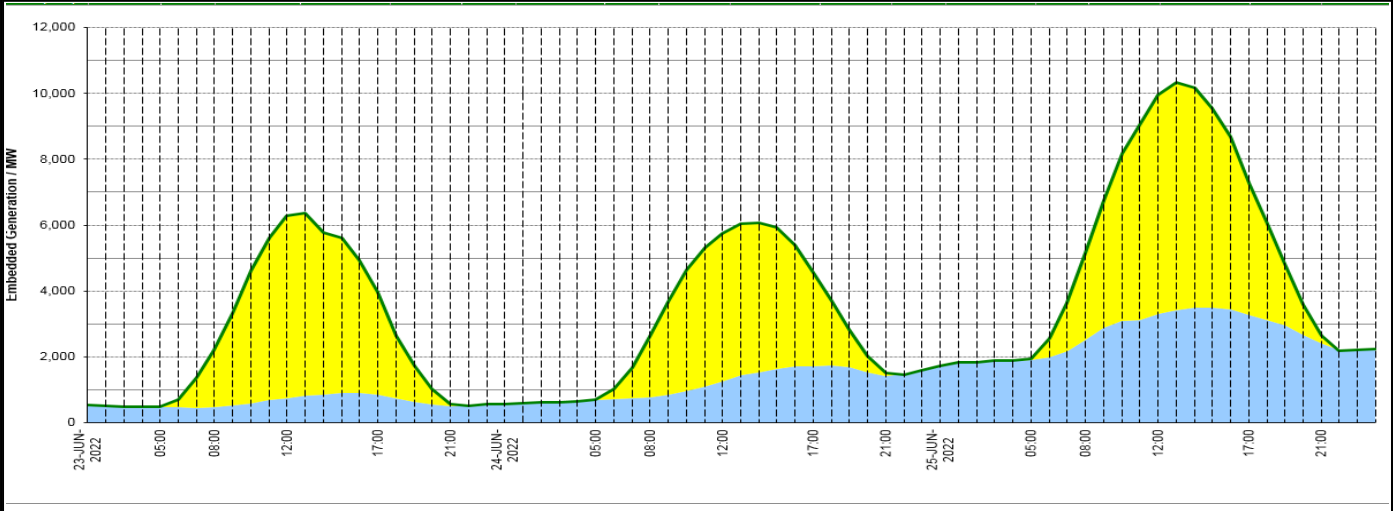
Wind Power Forecast



Expected embedded generation (MWs)

Embedded Generation Forecast

| Embedded Generation Estimates | | | | | | | | | | | | | | | Last run: 24-Jun-2022 01:46:57 | | |
|-------------------------------|-------------|-------------|-------------|-------------|-------------|------------|------------|-------------|-------------|-------------|-------------|-------------|-------------|-------------|--------------------------------|-------------|-------------|
| | 23-JUN-2022 | | | | 24-JUN-2022 | | | | 25-JUN-2022 | | | | | | | | |
| | 05:00 | 08:00 | 12:00 | 17:00 | 21:00 | 00:00 | 05:00 | 08:00 | 12:00 | 17:00 | 21:00 | 00:00 | 05:00 | 08:00 | 12:00 | 17:00 | 21:00 |
| Solar (MW) | 3 | 1750 | 5550 | 3100 | 75 | 0 | 17 | 1842 | 4491 | 2834 | 83 | 0 | 27 | 2634 | 6659 | 4009 | 245 |
| Wind (MW) | 474 | 466 | 732 | 853 | 499 | 565 | 674 | 766 | 1260 | 1714 | 1420 | 1712 | 1910 | 2508 | 3304 | 3281 | 2404 |
| STOR (MW) | 0 | 0 | 0 | 0 | 0 | 0 | 0 | 0 | 0 | 0 | 0 | 0 | 0 | 0 | 0 | 0 | 0 |
| Total (MW) | 477 | 2216 | 6282 | 3953 | 574 | 565 | 691 | 2608 | 5751 | 4548 | 1503 | 1712 | 1937 | 5142 | 9963 | 7290 | 2649 |



| Weather | Source | Commentary |
|---|---|---|
| Latest forecast (Summary) | Met Office SEPA Natural Resources Wales | <p>Today: Today, it will become rather cloudy for most with scattered, heavy showers, but Scotland will stay sunnier. A band of showery rain will move in from the south-west later in the afternoon.</p> <p>Tonight: Tonight, showery rain will continue to push north-eastwards, reaching northern England and Scotland. Behind this, clear spells will widely develop but a few showers will still linger in places.</p> |
| General Weather Concerns e.g. wind, rain, snow, flooding, GB Weather Warnings | Met Office Weather Warnings SEPA Natural Resources Wales | <p>UK Weather Warnings no warnings in place</p> <p>Flood Warnings No flood warnings are currently in force for England.</p> <p>No flood warnings are currently in force for Scotland.</p> <p>No flood warnings are currently in force for Wales.</p> |

Contains public sector information licensed under the Open Government Licence v1.0

| Further Information | |
|----------------------------|---|
| BM Reports | https://www.bmreports.com |
| System Balancing Reports | https://www.nationalgrideso.com/balancing-data/system-balancing-reports |
| Forecast Volumes and Costs | https://www.nationalgrideso.com/balancing-data/forecast-volumes-and-costs |
| NGESO Insights | https://www.nationalgrideso.com/insights |