

**National Electricity
Transmission System Status Report**

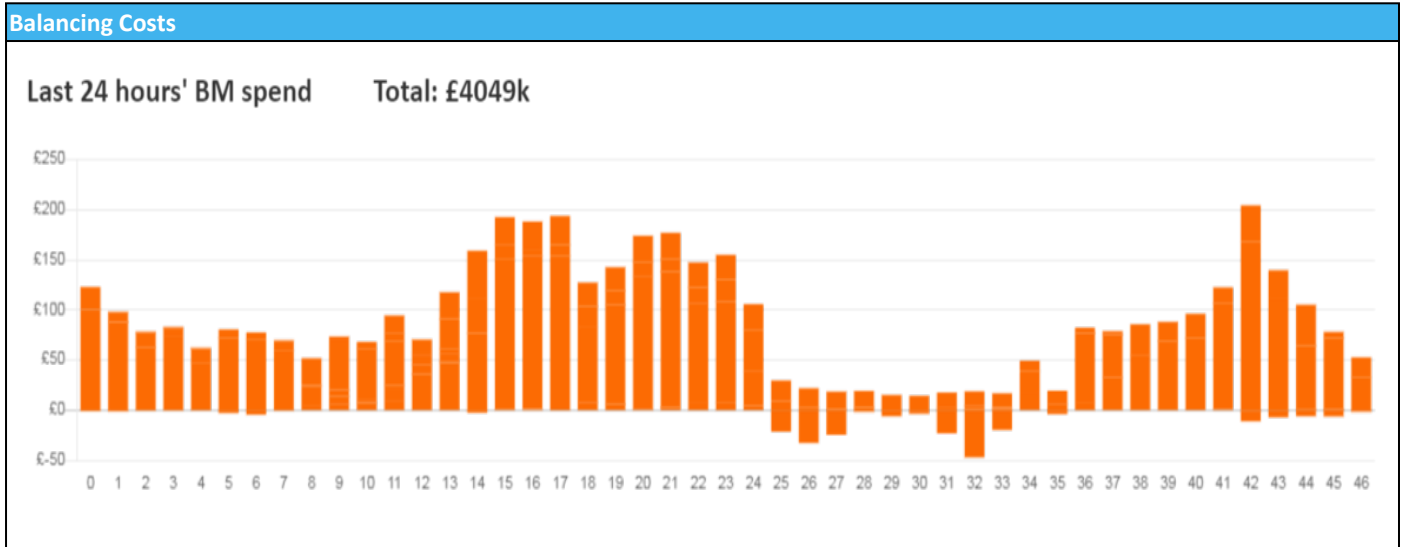


national**grid**ESO

National Electricity Transmission System Status Report
Thursday 09 June 2022

| Today's High Level Risk Status Forecast for the next 24h | | | |
|----------------------------------------------------------|--|----------------|--|
| General Status | | Voltage | |
| Demand | | System Inertia | |
| System Margins | | Weather | |
| Generation | | Transmission | |
| Active Constraints | | | |
| System Warning | | | |

| | | |
|-------------------------------------------------|--------------|---------|
| Today's Minimum De-Rated Margin | 9149 (SP 36) | |
| Current BMU Largest Loss Risk | Generation | 1500 MW |
| | Demand | 1050 MW |



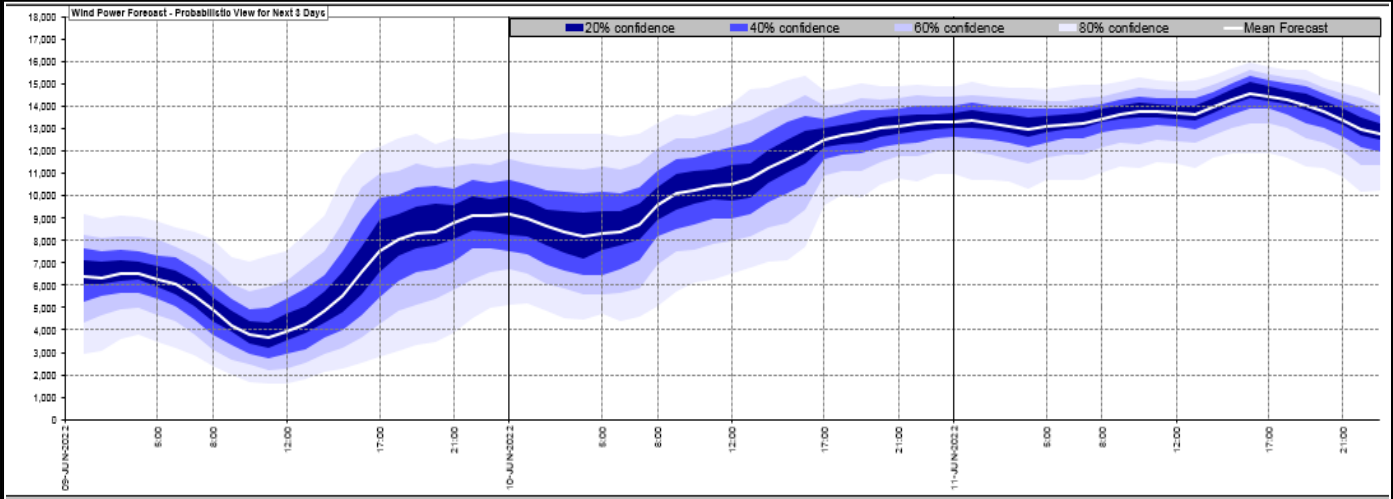
Yesterday's Market Summary

| | |
|---------------------------------------|-----------------|
| Cash Out Price (Max) | £200.00 (SP 44) |
| Cash Out Price (Min) | £87.10 (SP 33) |
| Peak Demand Yesterday | 32,371 MW |
| Minimum Demand | 18,840 MW |

Interconnector Net Transfer Capacity (MWs)

| Today | Import | Export | Remarks |
|--------------------------|--------|--------|---------------------------------------------------|
| Netherlands (BritNed) | 1100 | 1133 | Fully Available |
| France (IFA2) | 1014 | 1014 | Fully Available |
| Belgium (Nemo) | 1020 | 1020 | Fully Available |
| Ireland (EWIC) | 500 | 530 | Fully Available |
| Northern Ireland (MOYLE) | 250 | 250 | Partially Available |
| Norway (NSL) | 0 | 0 | On Outage until 10/06/22 23:00 |
| France (ElecLink) | 1014 | 1014 | Fully Available |
| France (IFA) | 500 | 500 | Partially Available, outage until 9/06/22 @ 16:00 |

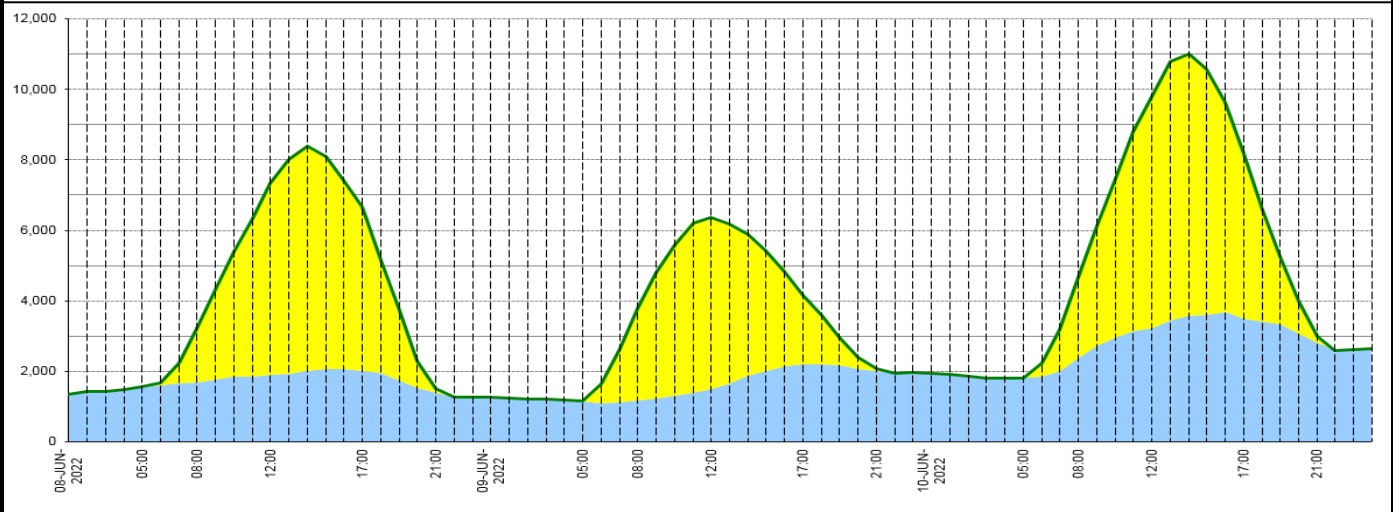
Wind Power Forecast



Expected embedded generation (MWs)

Embedded Generation Forecast

| | 08-JUN-2022 | | | | | 09-JUN-2022 | | | | | 10-JUN-2022 | | | | | | |
|-------------------|-------------|-------------|-------------|-------------|-------------|-------------|-------------|-------------|-------------|-------------|-------------|-------------|-------------|-------------|-------------|-------------|-------------|
| | 05:00 | 08:00 | 12:00 | 17:00 | 21:00 | 00:00 | 05:00 | 08:00 | 12:00 | 17:00 | 21:00 | 00:00 | 05:00 | 08:00 | 12:00 | 17:00 | 21:00 |
| Solar (MW) | 0 | 1530 | 5430 | 4630 | 133 | 0 | 4 | 2595 | 4853 | 1938 | 58 | 0 | 0 | 2280 | 6626 | 4644 | 187 |
| Wind (MW) | 1549 | 1690 | 1901 | 2020 | 1377 | 1274 | 1145 | 1180 | 1493 | 2208 | 2004 | 1933 | 1813 | 2389 | 3230 | 3503 | 2810 |
| STOR (MW) | 0 | 0 | 0 | 0 | 0 | 0 | 0 | 0 | 0 | 0 | 0 | 0 | 0 | 0 | 0 | 0 | 0 |
| Total (MW) | 1549 | 3220 | 7331 | 6650 | 1510 | 1274 | 1149 | 3764 | 6360 | 4145 | 2062 | 1933 | 1813 | 4661 | 9805 | 8167 | 3000 |



| Weather | Source | Commentary |
|-------------------------------------------------------------------------------|-----------------------------------------------------------------------------------------------------------------------------------|-------------------------------------------------------------------------------------------------------------------------------------------------------------------------------------------------------------------------------------------------------------------------------------------------------------------------------------------------------------------------------------|
| Latest forecast (Summary) | Met Office SEPA Natural Resources Wales | Today: A few showers across Scotland, otherwise many central and eastern areas dry with some sunny spells. Outbreaks of rain and drizzle in the west edging steadily eastwards, turning light and patchy. Tonight: Drizzle becoming confined to southeast England, else most parts dry with variable cloud cover. Windy in the northwest with a few showers. |
| General Weather Concerns e.g. wind, rain, snow, flooding, GB Weather Warnings | Met Office Weather Warnings SEPA Natural Resources Wales | UK Weather Warnings No weather warnings are in force for the UK. Flood Warnings No flood warnings are currently in force for England. No flood warnings & 5 flood alerts issued for Scotland. No flood warnings are currently in force for Wales. |

Contains public sector information licensed under the Open Government Licence v1.0

| Further Information | |
|----------------------------|-------------------------------------------------------------------------------------------------------------------------------------------------------------------|
| BM Reports | https://www.bmreports.com |
| System Balancing Reports | https://www.nationalgrideso.com/balancing-data/system-balancing-reports |
| Forecast Volumes and Costs | https://www.nationalgrideso.com/balancing-data/forecast-volumes-and-costs |
| NGESO Insights | https://www.nationalgrideso.com/insights |