

# National Electricity Transmission System Status Report

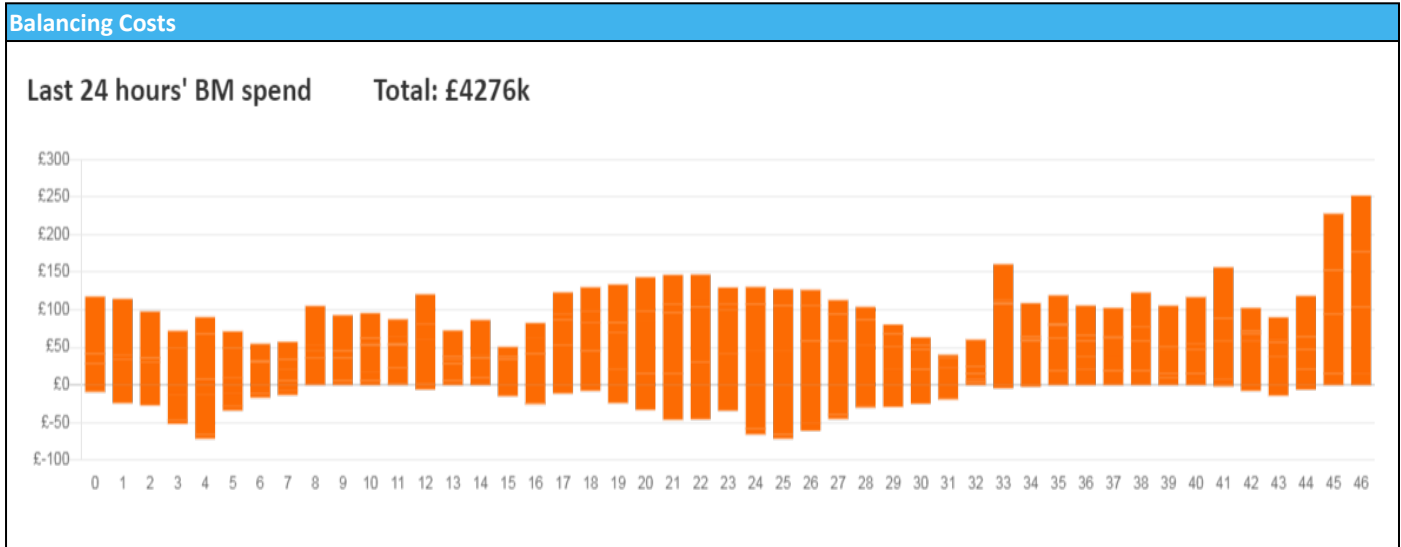


nationalgridESO

National Electricity Transmission System Status Report  
Thursday 19 May 2022

Today's High Level Risk Status Forecast for the next 24h			
General Status		Voltage	
Demand		System Inertia	
System Margins		Weather	
Generation		Transmission	
Active Constraints			
<a href="#">System Warning</a>			

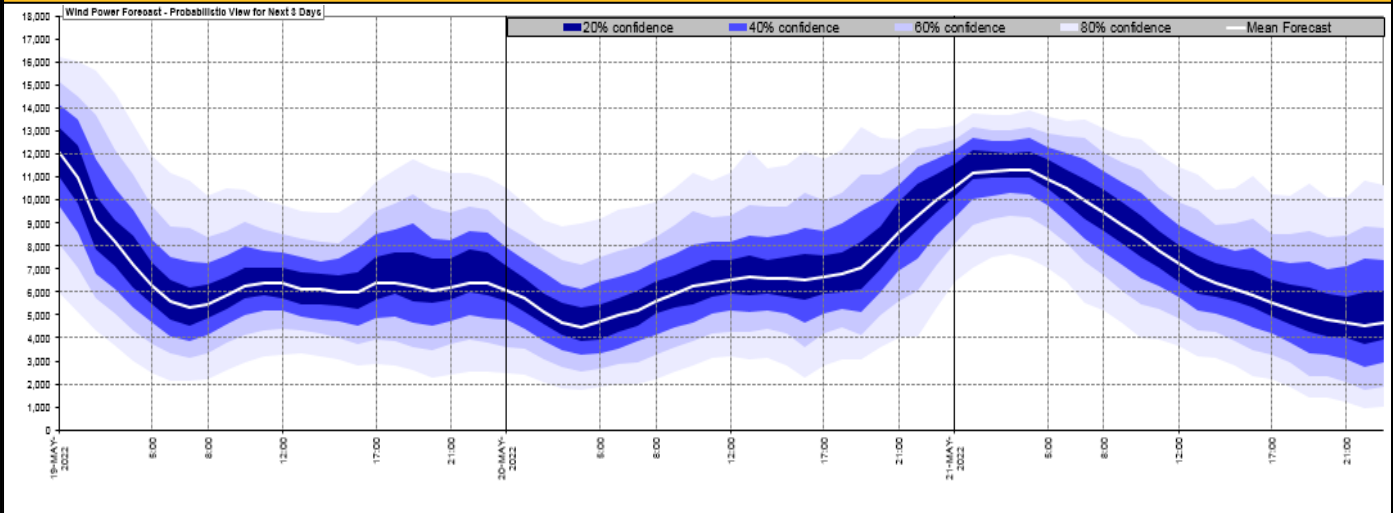
<a href="#">Today's Minimum De-Rated Margin</a>	5041 (SP 38)	
Current BMU Largest Loss Risk	Generation	1500 MW
	Demand	1050 MW



Yesterday's Market Summary	
<a href="#">Cash Out Price (Max)</a>	£164.95 (SP 35)
<a href="#">Cash Out Price (Min)</a>	-£69.49 (SP 5-9)
<a href="#">Peak Demand Yesterday</a>	34,164MW
Minimum Demand	18,168W

Interconnector Net Transfer Capacity (MWs)			
Today	Import	Export	Remarks
Netherlands (BritNed)	0	0	On outage
France (IFA2)	1014	1014	Fully Available
Belgium (Nemo)	1020	1020	Fully Available
Ireland (EWIC)	0	0	On outage
Northern Ireland (MOYLE)	250	250	Partially Available
NSL	700	700	Partially Available
ElecLink	0	0	Not yet commissioned
France IFA	1000	700	Partially Available

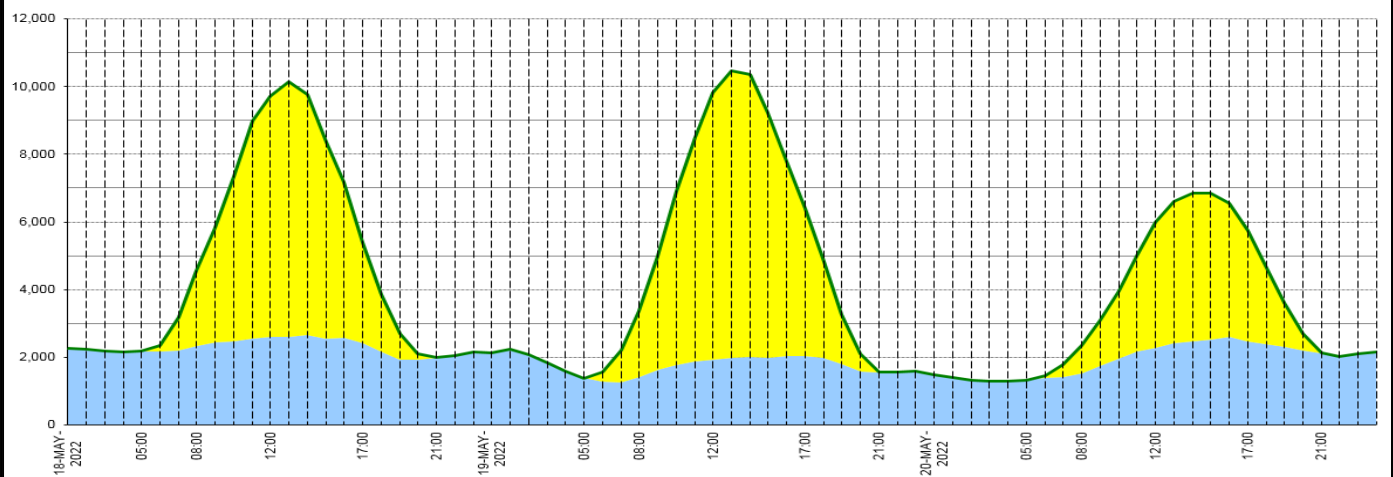
### Wind Power Forecast



### Expected embedded generation (MWs)

#### Embedded Generation Forecast

	18-MAY-2022					19-MAY-2022					20-MAY-2022						
	05:00	08:00	12:00	17:00	21:00	00:00	05:00	08:00	12:00	17:00	21:00	00:00	05:00	08:00	12:00	17:00	21:00
Solar (MW)	0	2230	7100	3000	9	0	0	1940	7901	4354	22	0	0	832	3729	3280	38
Wind (MW)	2177	2335	2599	2407	1993	2136	1386	1424	1921	2040	1536	1481	1321	1523	2271	2475	2103
STOR (MW)	0	0	0	0	0	0	0	0	0	0	0	0	0	0	0	0	0
<b>Total (MW)</b>	<b>2177</b>	<b>4565</b>	<b>9699</b>	<b>5407</b>	<b>2002</b>	<b>2136</b>	<b>1386</b>	<b>3364</b>	<b>9822</b>	<b>6394</b>	<b>1558</b>	<b>1481</b>	<b>1321</b>	<b>2355</b>	<b>6000</b>	<b>5755</b>	<b>2141</b>



Weather	Source	Commentary
Latest forecast (Summary)	<a href="#">Met Office</a> <a href="#">SEPA</a> <a href="#">Natural Resources Wales</a>	<b>Today:</b> Residual cloud and showery rain clearing far southeast of England. Otherwise, mostly dry with sunny spells and feeling warm in the south and east. Windy and rather cloudy in far northwest with some showery rain at times. <b>Tonight:</b> Windy across far northwest with further rain at times, edging east across NI later. Clear spells elsewhere before cloud increases and brings some patchy rain northwards into southern England later.
General Weather Concerns e.g. wind, rain, snow, flooding, GB Weather Warnings	<a href="#">Met Office</a> <a href="#">Weather Warnings</a> <a href="#">SEPA</a> <a href="#">Natural Resources Wales</a>	<b>UK Weather Warnings</b> No weather warnings in force <b>Flood Warnings</b> 1 flood alert currently in force for England.  No flood warnings are currently in force for Scotland.  No flood warnings are currently in force for Wales.

Contains public sector information licensed under the Open Government Licence v1.0

Further Information	
BM Reports	<a href="https://www.bmreports.com">https://www.bmreports.com</a>
System Balancing Reports	<a href="https://www.nationalgrideso.com/balancing-data/system-balancing-reports">https://www.nationalgrideso.com/balancing-data/system-balancing-reports</a>
Forecast Volumes and Costs	<a href="https://www.nationalgrideso.com/balancing-data/forecast-volumes-and-costs">https://www.nationalgrideso.com/balancing-data/forecast-volumes-and-costs</a>
NGESO Insights	<a href="https://www.nationalgrideso.com/insights">https://www.nationalgrideso.com/insights</a>