

# National Electricity Transmission System Status Report

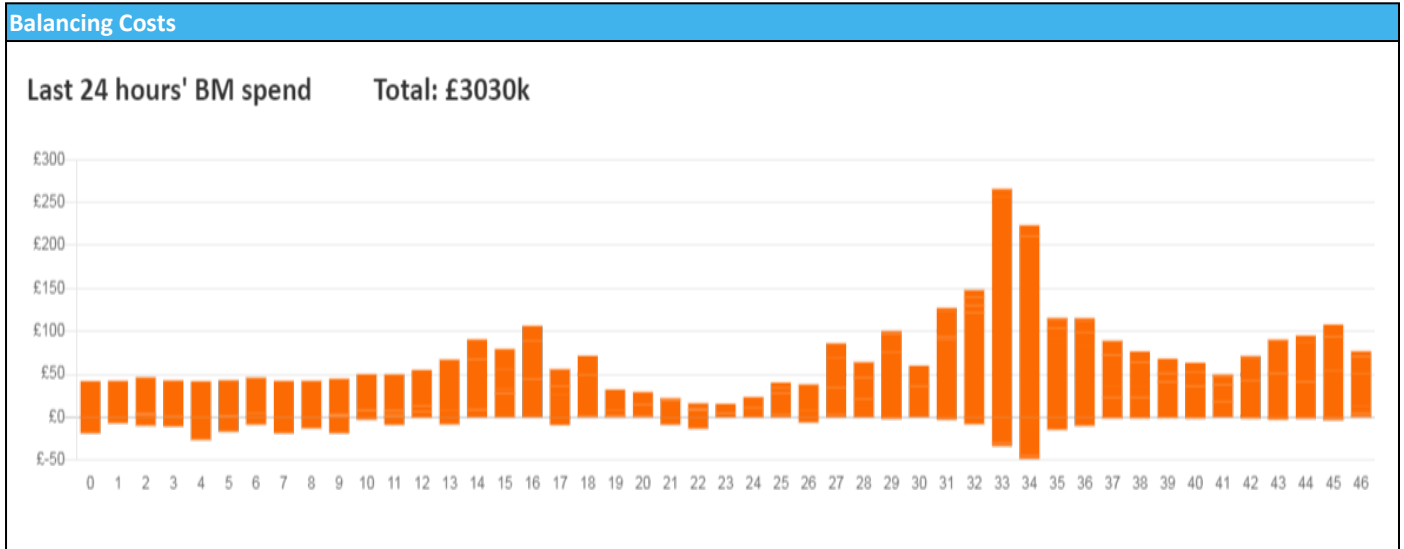


nationalgridESO

National Electricity Transmission System Status Report  
Monday 16 May 2022

Today's High Level Risk Status Forecast for the next 24h			
General Status		Voltage	
Demand		System Inertia	
System Margins		Weather	
Generation		Transmission	
Active Constraints			
<a href="#">System Warning</a>			

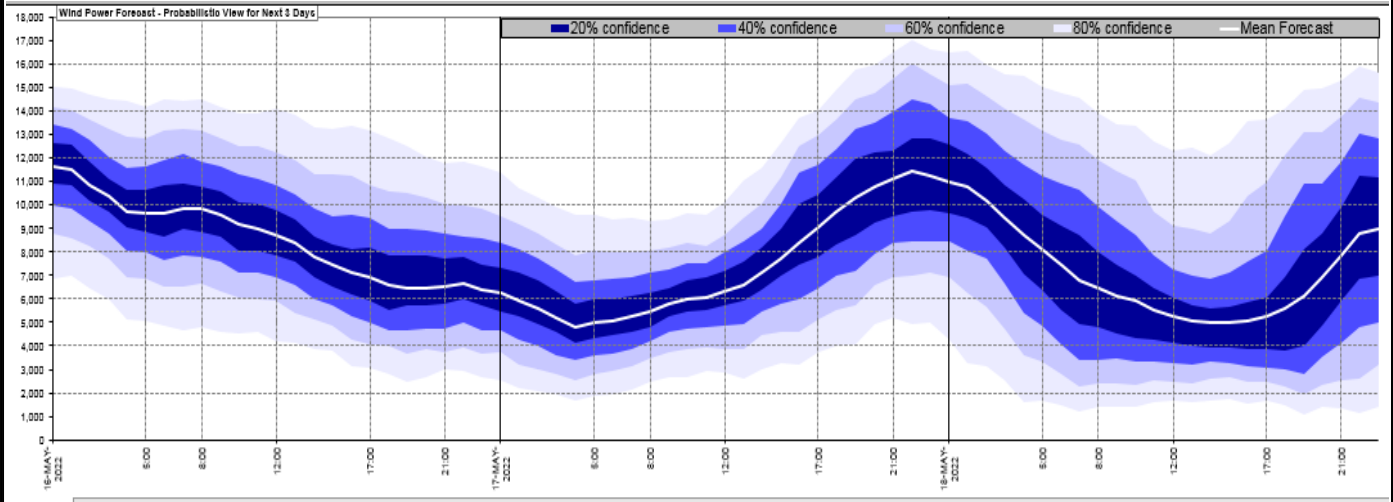
<a href="#">Today's Minimum De-Rated Margin</a>	5237 (SP 40)	
Current BMU Largest Loss Risk	Generation	1500 MW
	Demand	1050 MW



Yesterday's Market Summary	
<a href="#">Cash Out Price (Max)</a>	£220.00 (SP 36)
<a href="#">Cash Out Price (Min)</a>	£62.00 (SP 28)
<a href="#">Peak Demand Yesterday</a>	32,102 MW
Minimum Demand	17,860 MW

Interconnector Net Transfer Capacity (MWs)			
Today	Import	Export	Remarks
Netherlands (BritNed)	0	0	On outage
France (IFA2)	1014	1014	Fully Available
Belgium (Nemo)	1020	1020	Fully Available
Ireland (EWIC)	500	500	Fully Available
Northern Ireland (MOYLE)	250	250	Partially Available
NSL	700	700	Partially Available
ElecLink	0	0	Not yet commissioned
France IFA	1000	1000	Partially Available

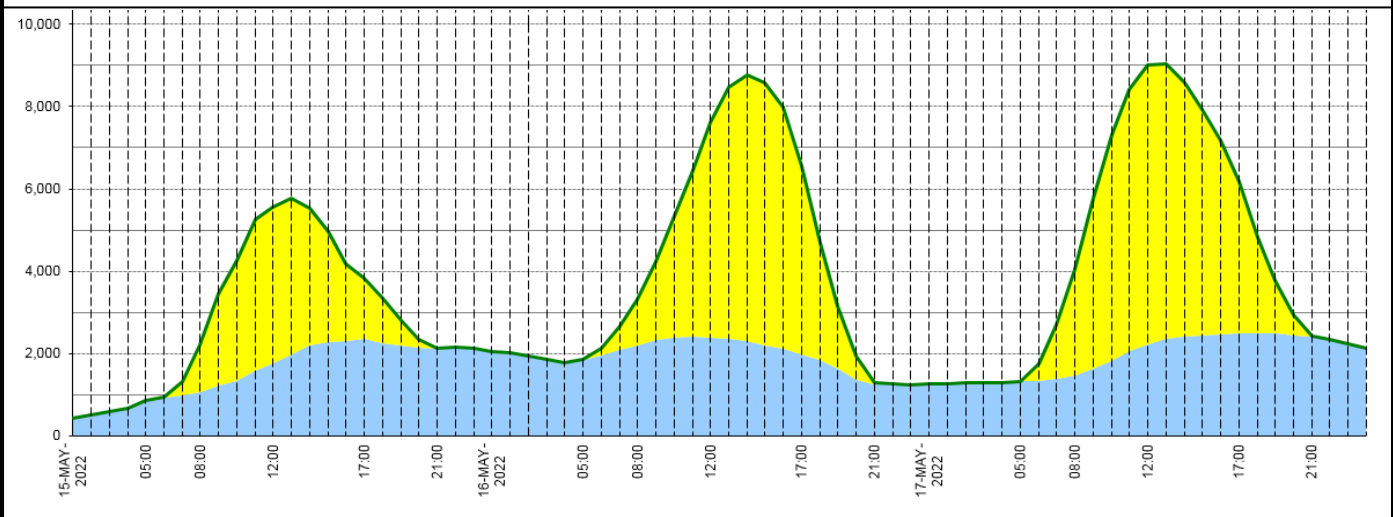
### Wind Power Forecast



### Expected embedded generation (MWs)

#### Embedded Generation Forecast

	15-MAY-2022					16-MAY-2022					17-MAY-2022						
	05:00	08:00	12:00	17:00	21:00	00:00	05:00	08:00	12:00	17:00	21:00	00:00	05:00	08:00	12:00	17:00	21:00
Solar (MW)	0	1150	3800	1490	7	0	0	1128	5203	4563	32	0	0	2575	6784	3685	29
Wind (MW)	856	1050	1764	2348	2127	2054	1849	2198	2393	1990	1247	1265	1331	1465	2236	2485	2400
STOR (MW)	0	0	0	0	0	0	0	0	0	0	0	0	0	0	0	0	0
<b>Total (MW)</b>	<b>856</b>	<b>2200</b>	<b>5564</b>	<b>3838</b>	<b>2134</b>	<b>2054</b>	<b>1849</b>	<b>3326</b>	<b>7596</b>	<b>6553</b>	<b>1279</b>	<b>1265</b>	<b>1331</b>	<b>4040</b>	<b>9020</b>	<b>6170</b>	<b>2429</b>



Weather	Source	Commentary
Latest forecast (Summary)	<a href="#">Met Office</a> <a href="#">SEPA</a> <a href="#">Natural Resources Wales</a>	<p><b>Today:</b> Rain, heavy in places with a risk of thunder across central areas continuing north, followed by sunny spells and a few heavy showers. Fine end to the day across many central and southern areas. Warm in the sunshine.</p> <p><b>Tonight:</b> Most places becoming dry with clear periods and patchy mist later. Low cloud and rain or drizzle in far north. Cloud, occasional rain and stronger winds into far west later.</p>
General Weather Concerns e.g. wind, rain, snow, flooding, GB Weather Warnings	<a href="#">Met Office</a> <a href="#">Weather Warnings</a> <a href="#">SEPA</a> <a href="#">Natural Resources Wales</a>	<p><b>UK Weather Warnings</b> Yellow warning of thunderstorms Areas affected: East of England   London &amp; South East England   South West England   Wales</p> <p><b>ACTIVE:</b> Started at: 20:00 BST on Sun 15 May Ends: 05:00 BST on Mon 16 May There is a chance that thunderstorms may cause some flooding and disruption on Sunday night.</p> <p><b>Flood Warnings</b> 1 x flood alert and 1 x flood warning issued for England.</p>

Weather	Source	Commentary
		No flood warnings are currently in force for Scotland. No flood warnings are currently in force for Wales.

*Contains public sector information licensed under the Open Government Licence v1.0*

Further Information	
BM Reports	<a href="https://www.bmreports.com">https://www.bmreports.com</a>
System Balancing Reports	<a href="https://www.nationalgrideso.com/balancing-data/system-balancing-reports">https://www.nationalgrideso.com/balancing-data/system-balancing-reports</a>
Forecast Volumes and Costs	<a href="https://www.nationalgrideso.com/balancing-data/forecast-volumes-and-costs">https://www.nationalgrideso.com/balancing-data/forecast-volumes-and-costs</a>
NGESO Insights	<a href="https://www.nationalgrideso.com/insights">https://www.nationalgrideso.com/insights</a>