

**National Electricity  
Transmission System Status Report**

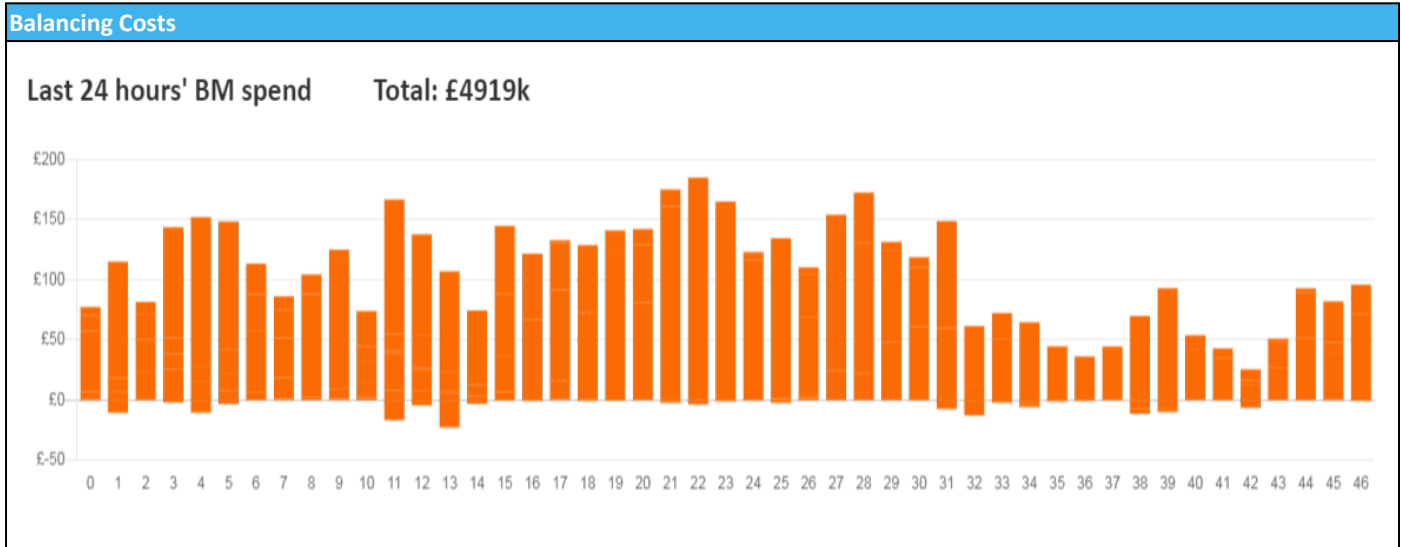


national**grid**ESO

National Electricity Transmission System Status Report  
Sunday 24 April 2022

Today's High Level Risk Status Forecast for the next 24h			
General Status		Voltage	
Demand		System Inertia	
System Margins		Weather	
Generation		Transmission	
Active Constraints			
<a href="#">System Warning</a>			

<a href="#">Today's Minimum De-Rated Margin</a>	8385 (SP 41)	
Current BMU Largest Loss Risk	Generation	1500 MW
	Demand	560 MW



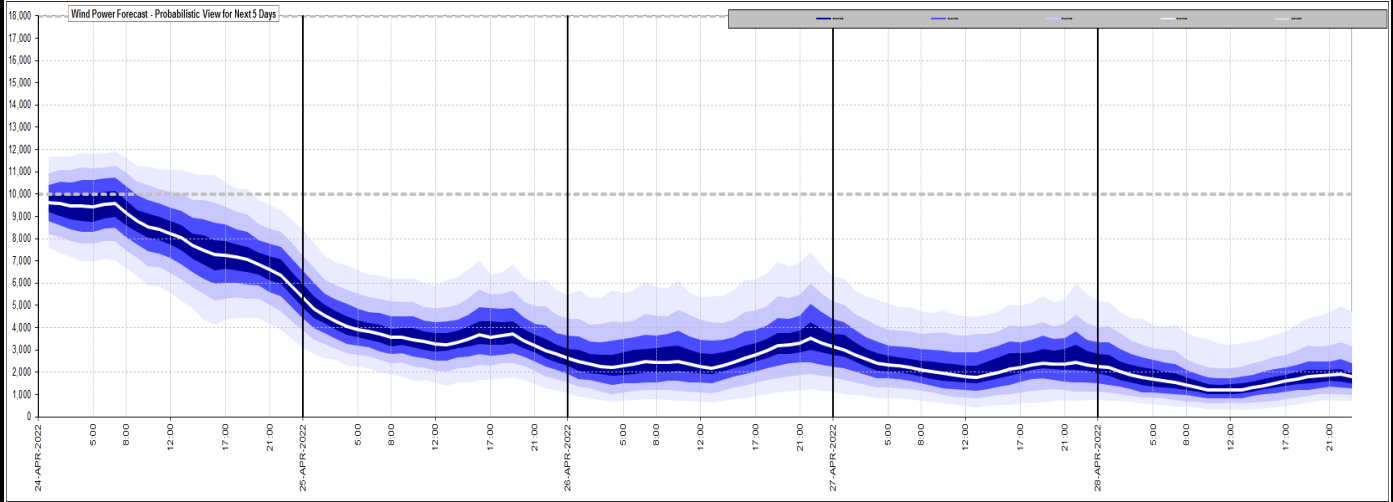
**Yesterday's Market Summary**

<a href="#">Cash Out Price (Max)</a>	£234.00 (SP 40-41)
<a href="#">Cash Out Price (Min)</a>	£81.87 (SP 13)
<a href="#">Peak Demand Yesterday</a>	26,767 MW
Minimum Demand	17,700 MW

**Interconnector Net Transfer Capacity (MWs)**

Today	Import	Export	Remarks
Netherlands (BritNed)	1016	1016	Fully Available
France (IFA2)	1014	1014	Fully Available
Belgium (Nemo)	1020	1020	Fully Available
Ireland (EWIC)	0	0	Planned Outage
Northern Ireland (MOYLE)	500	500	Fully Available
NSL	706	706	Partially Available
ElecLink	0	0	Not yet commissioned
France IFA	1000	1000	Partially available

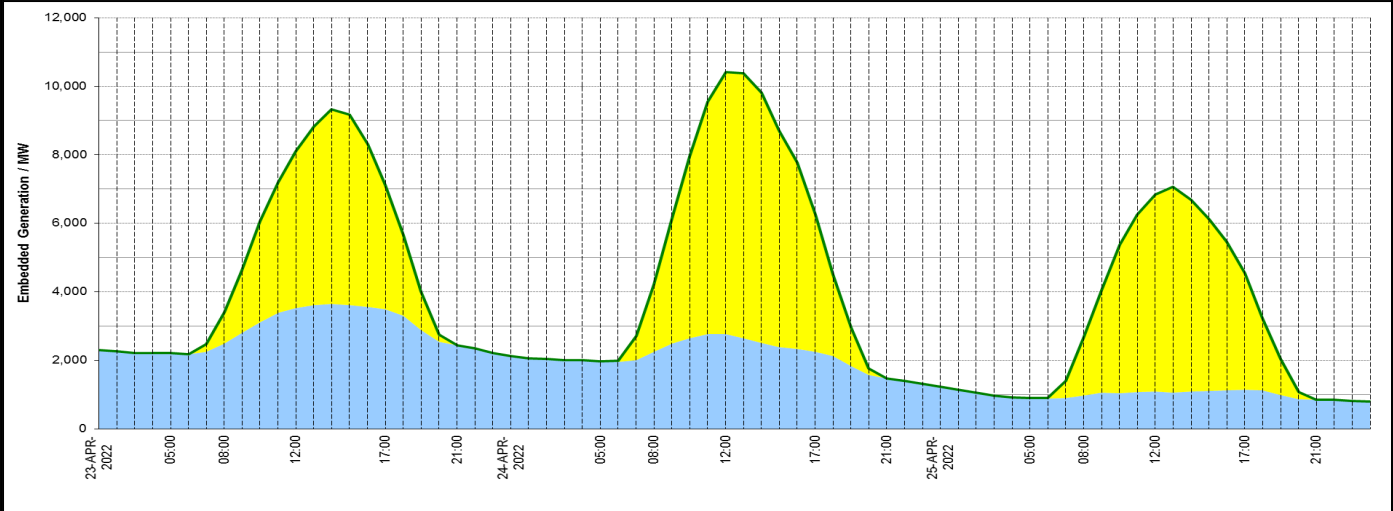
### Wind Power Forecast



### Expected embedded generation (MWs)

#### Embedded Generation Forecast

	23-APR-2022					24-APR-2022					25-APR-2022						
	05:00	08:00	12:00	17:00	21:00	00:00	05:00	08:00	12:00	17:00	21:00	00:00	05:00	08:00	12:00	17:00	21:00
Solar (MW)	0	916	4570	3620	7	0	0	1978	7640	4002	0	0	0	1662	5758	3408	0
Wind (MW)	2206	2484	3527	3491	2429	2129	1977	2246	2772	2252	1470	1224	905	977	1091	1144	852
STOR (MW)	0	0	0	0	0	0	0	0	0	0	0	0	0	0	0	0	0
<b>Total (MW)</b>	<b>2206</b>	<b>3400</b>	<b>8097</b>	<b>7111</b>	<b>2436</b>	<b>2129</b>	<b>1977</b>	<b>4224</b>	<b>10412</b>	<b>6254</b>	<b>1470</b>	<b>1224</b>	<b>905</b>	<b>2639</b>	<b>6849</b>	<b>4552</b>	<b>852</b>



Weather	Source	Commentary
Latest forecast (Summary)	<a href="#">Met Office</a> <a href="#">SEPA</a> <a href="#">Natural Resources Wales</a>	<b>Today:</b> Patchy rain soon clearing the far southwest. Mostly dry with broken cloud and sunny spells, though a few afternoon showers developing across central and eastern England. Feeling warm in sunshine in the west, but rather cool along North Sea coasts. <b>Tonight:</b> Any showers soon dying out. Cloud breaking to allow clear spells, with a touch of frost across sheltered parts of the north and west.
General Weather Concerns e.g. wind, rain, snow, flooding, GB Weather Warnings	<a href="#">Met Office</a> <a href="#">Weather Warnings</a> <a href="#">SEPA</a> <a href="#">Natural Resources Wales</a>	<b>UK Weather Warnings</b> No weather warnings are in force for the UK. <b>Flood Warnings</b> 0 Flood Warnings and 0 Flood Alerts issued for England. 0 Flood Warnings and 0 Flood Alerts issued for Scotland. 0 Flood Warnings and 0 Flood Alerts issued for Wales.

Contains public sector information licensed under the Open Government Licence v1.0

Further Information	
BM Reports	<a href="https://www.bmreports.com">https://www.bmreports.com</a>

Further Information	
System Balancing Reports	<a href="https://www.nationalgrideso.com/balancing-data/system-balancing-reports">https://www.nationalgrideso.com/balancing-data/system-balancing-reports</a>
Forecast Volumes and Costs	<a href="https://www.nationalgrideso.com/balancing-data/forecast-volumes-and-costs">https://www.nationalgrideso.com/balancing-data/forecast-volumes-and-costs</a>
NGESO Insights	<a href="https://www.nationalgrideso.com/insights">https://www.nationalgrideso.com/insights</a>