

**National Electricity  
Transmission System Status Report**



national**grid**ESO

National Electricity Transmission System Status Report  
Sunday 17 April 2022

Today's High Level Risk Status Forecast for the next 24h			
General Status		Voltage	
Demand		System Inertia	
System Margins		Weather	
Generation		Transmission	
Active Constraints			
<a href="#">System Warning</a>			

<a href="#">Today's Minimum De-Rated Margin</a>	16581.395 (SP 1)	
Current BMU Largest Loss Risk	Generation	1300 MW
	Demand	560 MW

Balancing Costs

Last 24 hours' BM spend Total: £1040k



Yesterday's Market Summary

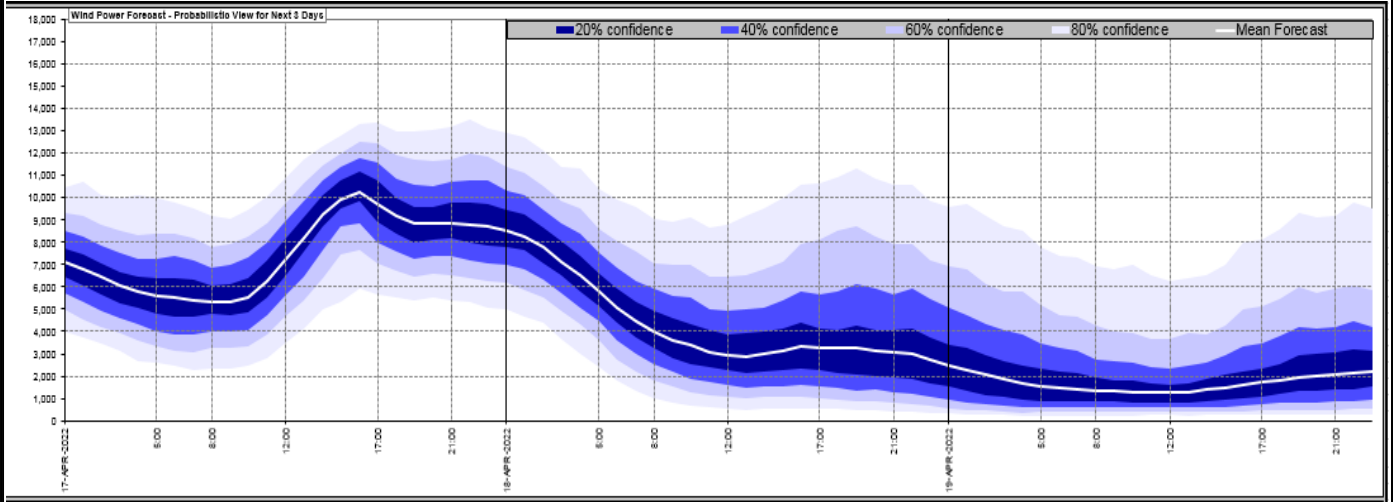
<a href="#">Cash Out Price (Max)</a>	£250.00 (SP 12)
<a href="#">Cash Out Price (Min)</a>	£5.60 (SP 24)
<a href="#">Peak Demand Yesterday</a>	29,926 MW
Minimum Demand	18,814 MW

Interconnector

Net Transfer Capacity (MWs)

Today	Import	Export	Remarks
Netherlands (BritNed)	1016	1016	Fully Available
France (IFA2)	1014	1014	Fully Available
Belgium (Nemo)	1020	1020	Fully Available
Ireland (EWIC)	0	0	Planned Outage
Northern Ireland (MOYLE)	500	500	Fully Available
NSL	706	706	Partially Available
ElecLink	0	0	Not yet commissioned
France IFA	1000	1000	Partially available

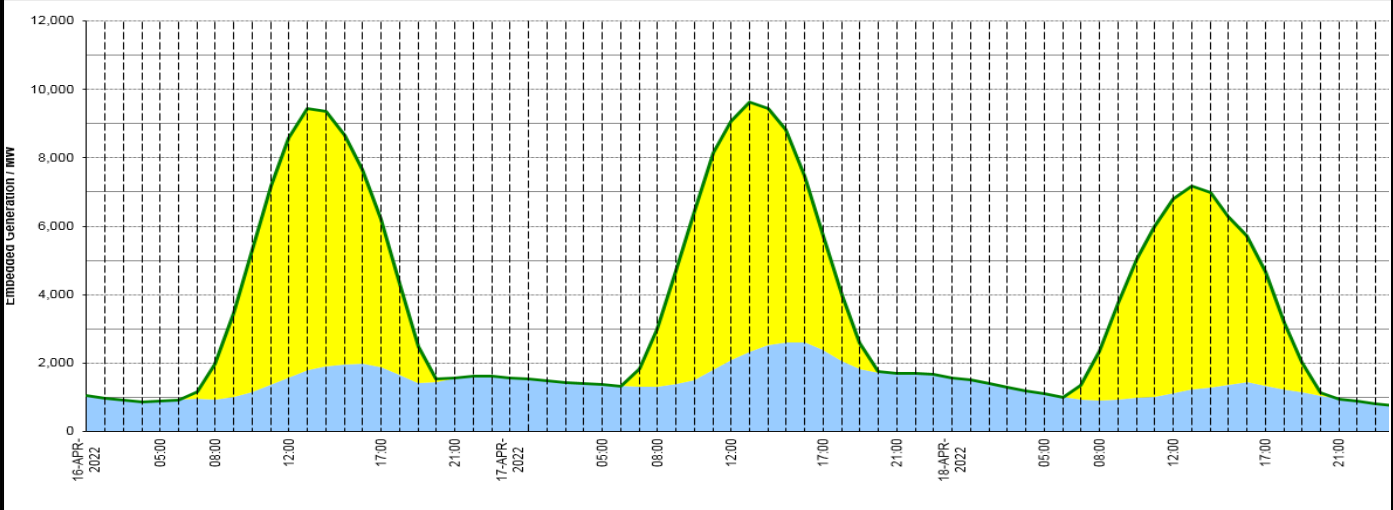
### Wind Power Forecast



### Expected embedded generation (MWs)

#### Embedded Generation Forecast

Embedded Generation Estimates																Last run: 17-Apr-2022 01:46:32	
	16-APR-2022					17-APR-2022					18-APR-2022						
	05:00	08:00	12:00	17:00	21:00	00:00	05:00	08:00	12:00	17:00	21:00	00:00	05:00	08:00	12:00	17:00	21:00
Solar (MW)	0	1040	6990	4320	4	1	0	1668	6983	3331	0	0	0	1446	5671	3320	0
Wind (MW)	895	916	1580	1871	1552	1558	1372	1317	2088	2386	1710	1567	1097	906	1114	1336	947
STOR (MW)	0	0	0	0	0	0	0	0	0	0	0	0	0	0	0	0	0
<b>Total (MW)</b>	<b>895</b>	<b>1956</b>	<b>8570</b>	<b>6191</b>	<b>1556</b>	<b>1559</b>	<b>1372</b>	<b>2985</b>	<b>9071</b>	<b>5717</b>	<b>1710</b>	<b>1567</b>	<b>1097</b>	<b>2352</b>	<b>6785</b>	<b>4656</b>	<b>947</b>



Weather	Source	Commentary
Latest forecast (Summary)	<a href="#">Met Office</a> <a href="#">SEPA</a> <a href="#">Natural Resources Wales</a>	<b>Today:</b> A cloudy and wet start today in N Ireland and north-west Scotland, but dry and bright elsewhere. Staying sunny and dry for eastern areas, but cloud and rain will spread into western areas later. <b>Tonight:</b> Tonight, after a clear start in the east rain will push eastwards across the UK, although the south-east will stay dry. Behind this, the south-west will be clear, but the north-west will see showers
General Weather Concerns e.g. wind, rain, snow, flooding, GB Weather Warnings	<a href="#">Met Office</a> <a href="#">Weather Warnings</a> <a href="#">SEPA</a> <a href="#">Natural Resources Wales</a>	<b>UK Weather Warnings</b> No weather warnings are in force for the UK.  <b>Flood Warnings</b> 0 Flood Warnings and 0 Flood Alerts issued for England. 0 Flood Warnings and 0 Flood Alerts issued for Scotland. 0 Flood Warnings and 0 Flood Alerts issued for Wales.

Contains public sector information licensed under the Open Government Licence v1.0

Further Information	
BM Reports	<a href="https://www.bmreports.com">https://www.bmreports.com</a>
System Balancing Reports	<a href="https://www.nationalgrideso.com/balancing-data/system-balancing-reports">https://www.nationalgrideso.com/balancing-data/system-balancing-reports</a>
Forecast Volumes and Costs	<a href="https://www.nationalgrideso.com/balancing-data/forecast-volumes-and-costs">https://www.nationalgrideso.com/balancing-data/forecast-volumes-and-costs</a>
NGESO Insights	<a href="https://www.nationalgrideso.com/insights">https://www.nationalgrideso.com/insights</a>