

# National Electricity Transmission System Status Report

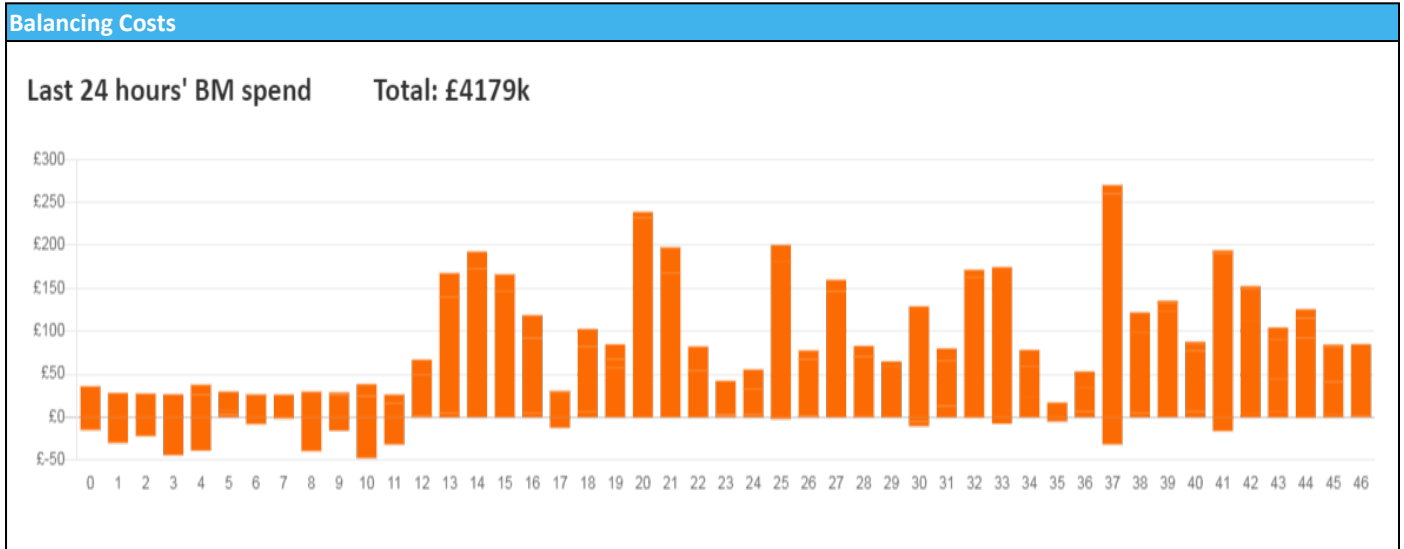


nationalgridESO

National Electricity Transmission System Status Report  
Wednesday 30 March 2022

Today's High Level Risk Status Forecast for the next 24h			
General Status		Voltage	
Demand		System Inertia	
System Margins		Weather	
Generation		Transmission	
Active Constraints			
<a href="#">System Warning</a>			

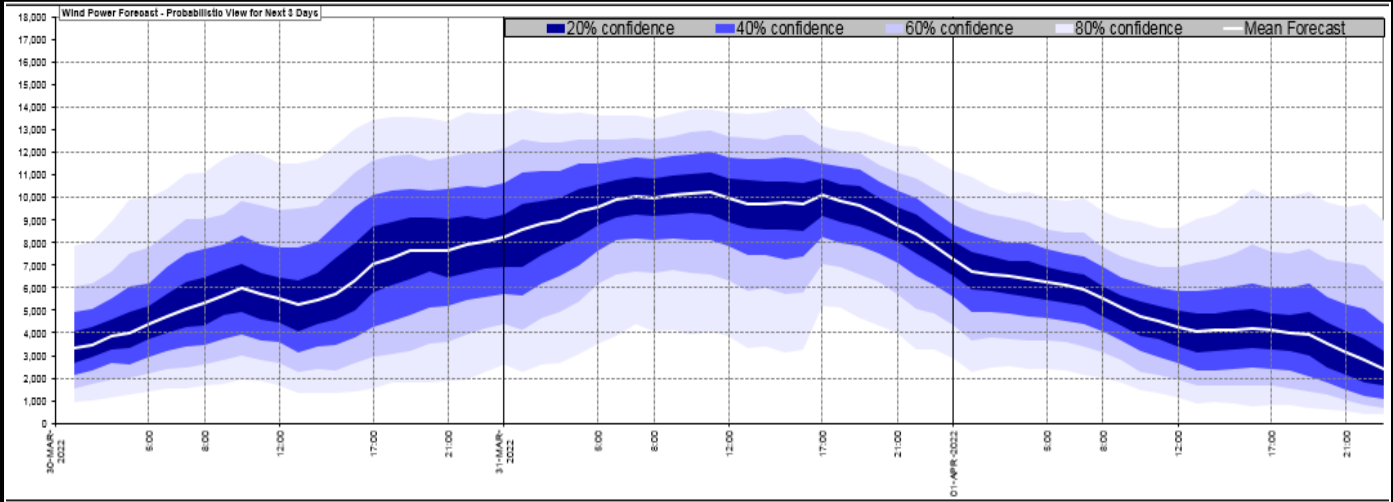
<a href="#">Today's Minimum De-Rated Margin</a>	9751 (SP 28)	
Current BMU Largest Loss Risk	Generation	1300 MW
	Demand	560 MW



Yesterday's Market Summary	
<a href="#">Cash Out Price (Max)</a>	£434.69 (SP 39)
<a href="#">Cash Out Price (Min)</a>	£157.00 (SPs 1 - 5)
<a href="#">Peak Demand Yesterday</a>	37,257 MW
Minimum Demand	22,600MW

Interconnector Net Transfer Capacity (MWs)			
Today	Import	Export	Remarks
Netherlands (BritNed)	1016	1016	Fully Available
France (IFA2)	1014	1014	Fully Available
Belgium (Nemo)	1020	1020	Fully Available
Ireland (EWIC)	0	0	Planned Outage
Northern Ireland (MOYLE)	500	500	Fully Available
NSL	706	706	Partially Available
ElecLink	0	0	Not yet commissioned
France IFA	1000	1000	Partially available

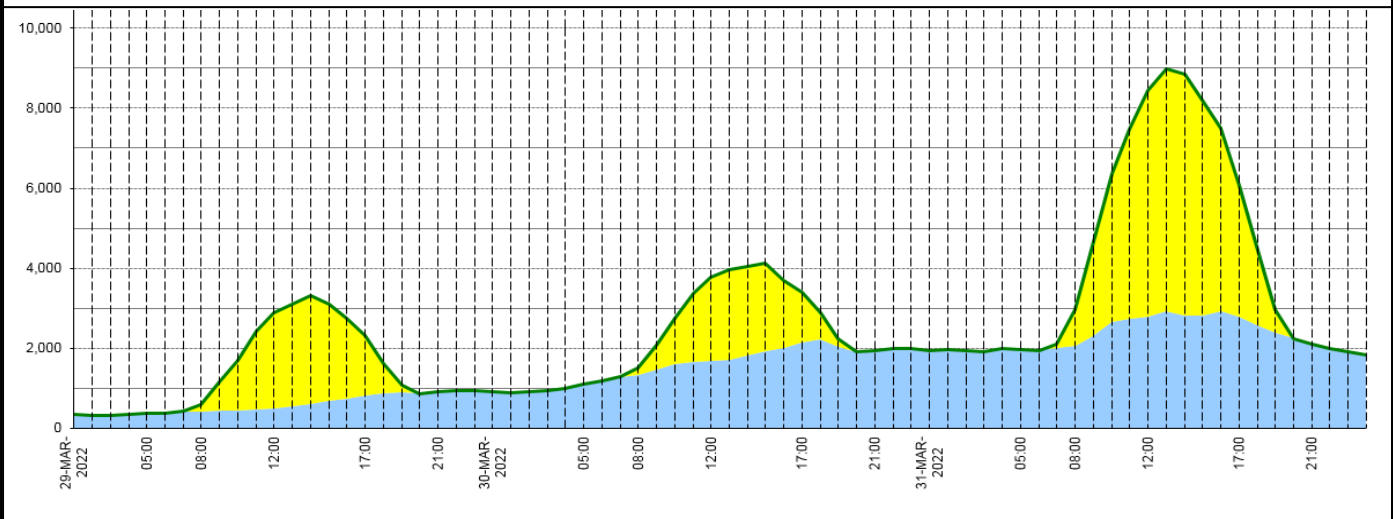
### Wind Power Forecast



### Expected embedded generation (MWs)

#### Embedded Generation Forecast

	29-MAR-2022					30-MAR-2022					31-MAR-2022						
	05:00	08:00	12:00	17:00	21:00	00:00	05:00	08:00	12:00	17:00	21:00	00:00	05:00	08:00	12:00	17:00	21:00
Solar (MW)	0	182	2370	1510	0	0	0	186	2079	1235	0	0	0	916	5649	3281	0
Wind (MW)	362	420	509	807	909	907	1091	1328	1693	2153	1944	1948	1966	2050	2784	2793	2107
STOR (MW)	0	0	0	0	0	0	0	0	0	0	0	0	0	0	0	0	0
<b>Total (MW)</b>	<b>362</b>	<b>602</b>	<b>2879</b>	<b>2317</b>	<b>909</b>	<b>907</b>	<b>1091</b>	<b>1514</b>	<b>3772</b>	<b>3388</b>	<b>1944</b>	<b>1948</b>	<b>1966</b>	<b>2966</b>	<b>8433</b>	<b>6074</b>	<b>2107</b>



Weather	Source	Commentary
Latest forecast (Summary)	<a href="#">Met Office</a> <a href="#">SEPA</a> <a href="#">Natural Resources Wales</a>	<p><b>Today:</b> Rain and hill snow continuing south across England and Wales. Rather cloudy with some scattered showers ahead, but bright and cold to the north, with heavy sleet, hail and snow showers.</p> <p><b>Tonight:</b> Clear spells in the north with wintry showers and a widespread frost. In the south, rain, sleet and hill snow continuing south-eastwards.</p>
General Weather Concerns e.g. wind, rain, snow, flooding, GB Weather Warnings	<a href="#">Met Office Weather Warnings</a> <a href="#">SEPA</a> <a href="#">Natural Resources Wales</a>	<p><b>UK Weather Warnings</b> Yellow warning of snow and ice</p> <p>Areas affected: Grampian   Highlands &amp; Eilean Siar   Orkney &amp; Shetland</p> <p>ACTIVE Started at: 22:00 BST on Tue 29 March Ends: 10:00 BST on Wed 30 March Snow and hail showers will lead to ice forming on untreated surfaces and hazardous driving conditions.</p> <p>- Probably some icy patches on some untreated roads, pavements and cycle paths, leading to an increased likelihood of accidents and injuries - Some roads and railways</p>

Weather	Source	Commentary
		are likely to be affected by snow, resulting in longer journey times by car, bus and train.
		<b>Flood Warnings</b> 0 Flood Warnings and 0 Flood Alerts issued for England. 0 Flood Warning and 0 Flood Alerts issued for Scotland. 0 Flood Warnings and 0 Flood Alerts issued for Wales.

*Contains public sector information licensed under the Open Government Licence v1.0*

Further Information	
BM Reports	<a href="https://www.bmreports.com">https://www.bmreports.com</a>
System Balancing Reports	<a href="https://www.nationalgrideso.com/balancing-data/system-balancing-reports">https://www.nationalgrideso.com/balancing-data/system-balancing-reports</a>
Forecast Volumes and Costs	<a href="https://www.nationalgrideso.com/balancing-data/forecast-volumes-and-costs">https://www.nationalgrideso.com/balancing-data/forecast-volumes-and-costs</a>
NGESO Insights	<a href="https://www.nationalgrideso.com/insights">https://www.nationalgrideso.com/insights</a>