

# National Electricity Transmission System Status Report

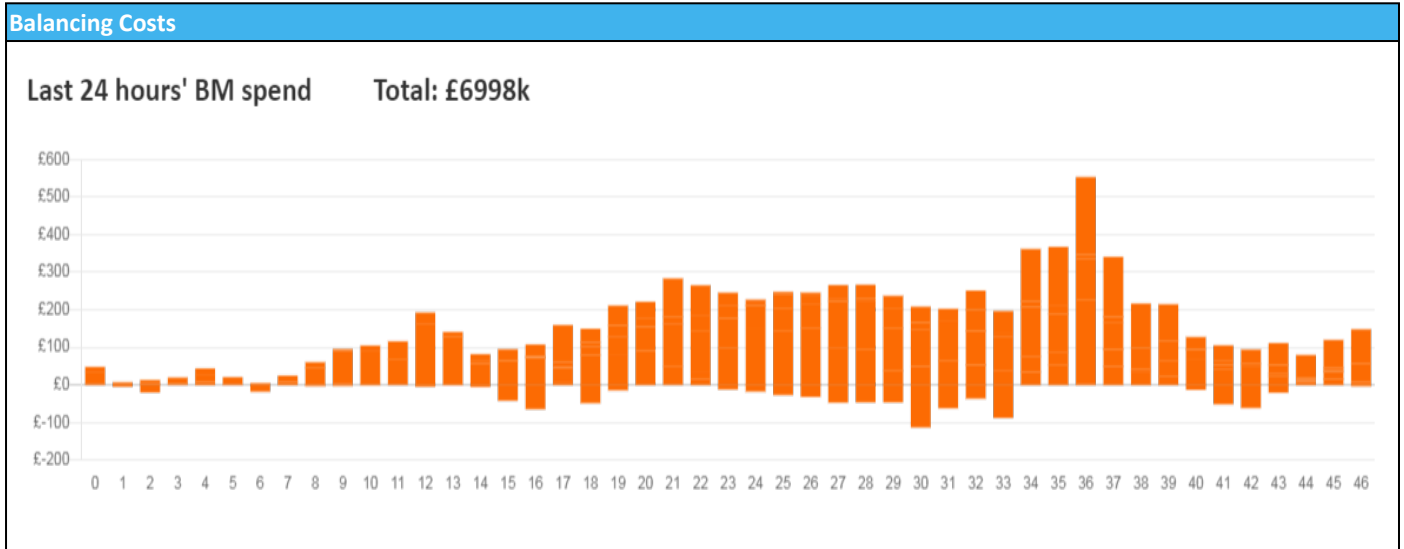


nationalgridESO

National Electricity Transmission System Status Report  
Friday 18 March 2022

| Today's High Level Risk Status Forecast for the next 24h |  |                |  |
|--|--|----------------|--|
| General Status   |  | Voltage        |  |
| Demand   |  | System Inertia |  |
| System Margins   |  | Weather        |  |
| Generation   |  | Transmission   |  |
| Active Constraints                                       |  |                |  |
| <a href="#">System Warning</a>                           |  |                |  |

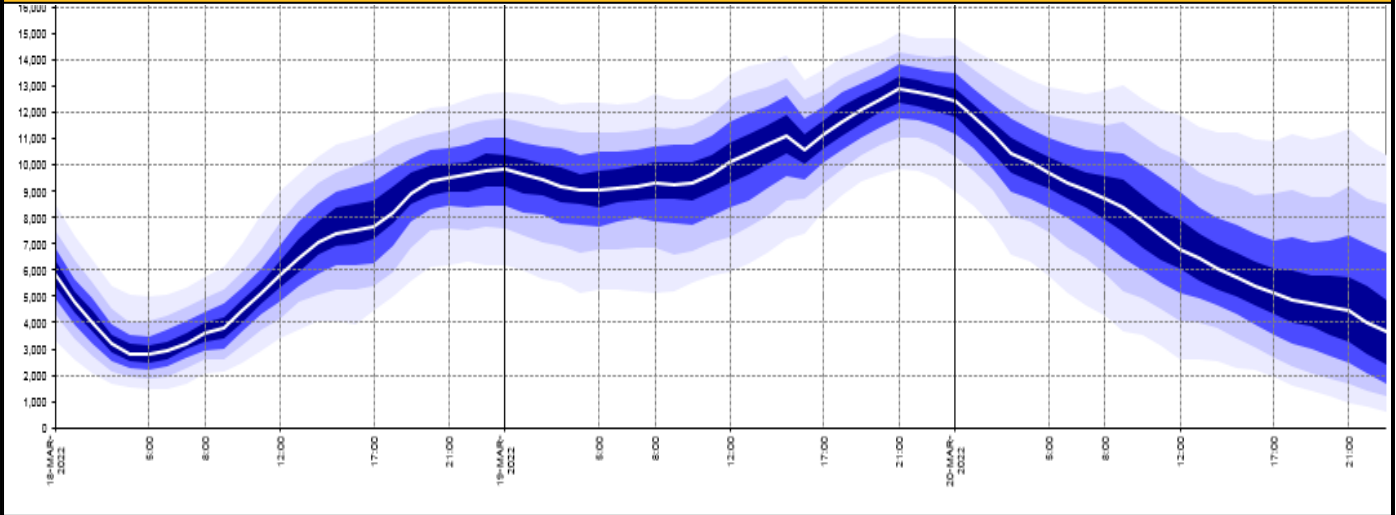
|   |               |         |
|---|---------------|---------|
| <a href="#">Today's Minimum De-Rated Margin</a> | 10351.(SP 16) |         |
| Current BMU Largest Loss Risk                   | Generation    | 1400 MW |
|   | Demand        | 560 MW  |



| Yesterday's Market Summary            |                      |
|---------------------------------------|----------------------|
| <a href="#">Cash Out Price (Max)</a>  | £338 (SP 38)         |
| <a href="#">Cash Out Price (Min)</a>  | £89.00 (SP 26,27,28) |
| <a href="#">Peak Demand Yesterday</a> | 40,200MW             |
| Minimum Demand                        | 23,460 MW            |

| Interconnector<br>Net Transfer Capacity (MWs) |        |        |  |
|---|--------|--------|--|
| Today   | Import | Export | Remarks                                      |
| Netherlands (BritNed)                         | 1016   | 1016   | Fully Available                              |
| France (IFA2)                                 | 1014   | 1014   | Fully Available                              |
| Belgium (Nemo)                                | 1020   | 1020   | Fully Available                              |
| Ireland (EWIC)                                | 0      | 0      | Planned Outage                               |
| Northern Ireland (MOYLE)                      | 500    | 500    | Fully Available                              |
| NSL   | 1400   | 1400   | Fully Available                              |
| ElecLink                                      | 0      | 0      | Not yet commissioned                         |
| France IFA                                    | 0      | 0      | Planned Outage on pole 4. Remainder on fault |

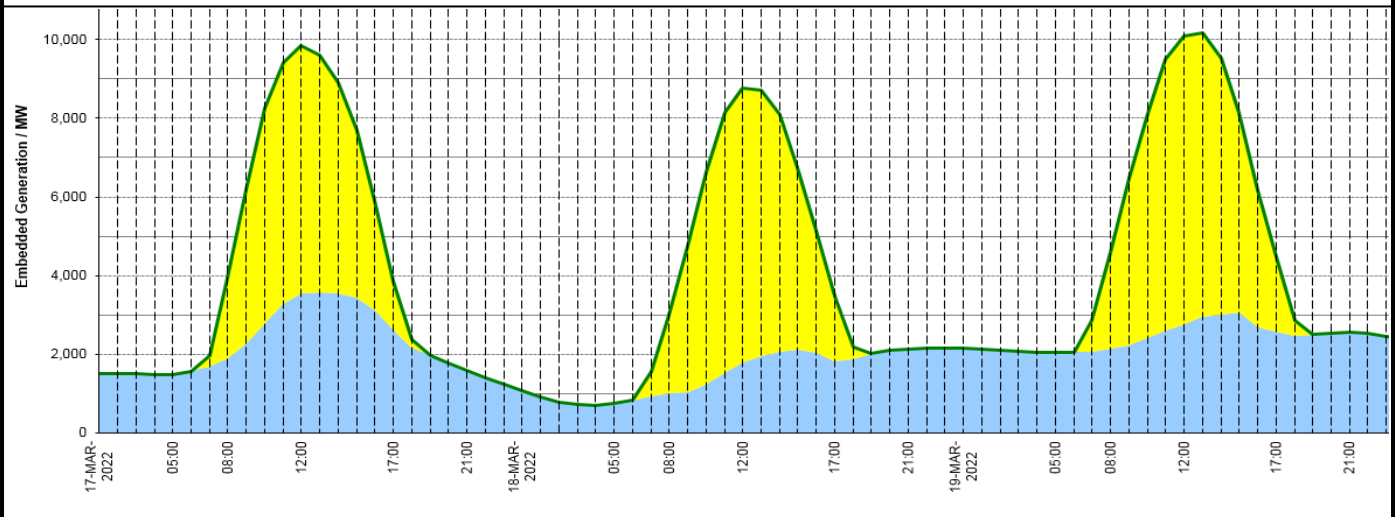
**Wind Power Forecast**



**Expected embedded generation (MWs)**

**Embedded Generation Forecast**

|                   | 17-MAR-2022 |             |             |             |             | 18-MAR-2022 |            |             |             |             | 19-MAR-2022 |             |             |             |              |             |             |
|-------------------|-------------|-------------|-------------|-------------|-------------|-------------|------------|-------------|-------------|-------------|-------------|-------------|-------------|-------------|--------------|-------------|-------------|
|                   | 05:00       | 08:00       | 12:00       | 17:00       | 21:00       | 00:00       | 05:00      | 08:00       | 12:00       | 17:00       | 21:00       | 00:00       | 05:00       | 08:00       | 12:00        | 17:00       | 21:00       |
| Solar (MW)        | 0           | 2020        | 6300        | 1270        | 0           | 0           | 0          | 1971        | 6959        | 1639        | 0           | 0           | 0           | 2449        | 7325         | 1909        | 0           |
| Wind (MW)         | 1484        | 1908        | 3544        | 2593        | 1585        | 1074        | 762        | 1013        | 1803        | 1828        | 2139        | 2158        | 2047        | 2137        | 2764         | 2555        | 2556        |
| STOR (MW)         | 0           | 0           | 0           | 0           | 0           | 0           | 0          | 0           | 0           | 0           | 0           | 0           | 0           | 0           | 0            | 0           | 0           |
| <b>Total (MW)</b> | <b>1484</b> | <b>3928</b> | <b>9844</b> | <b>3863</b> | <b>1585</b> | <b>1074</b> | <b>762</b> | <b>2984</b> | <b>8762</b> | <b>3467</b> | <b>2139</b> | <b>2158</b> | <b>2047</b> | <b>4586</b> | <b>10089</b> | <b>4474</b> | <b>2556</b> |



| Weather  | Source  | Commentary  |
|--|---|---|
| Latest forecast (Summary)  | <a href="#">Met Office</a><br><a href="#">SEPA</a><br><a href="#">Natural Resources Wales</a>                                     | <b>Today:</b><br>Fog and low cloud steadily clearing to allowing plenty of sunshine in many areas, and feeling quite warm. Turning windy in the north and, later, in the far south..<br><b>Tonight:</b><br>Rain and showers in the north mostly dying out and winds easing. Low cloud across parts of England and Wales with some fog patches forming by morning. Clear spells elsewhere, allowing a frost in places. |
| General Weather Concerns<br>e.g. wind, rain, snow, flooding, GB Weather Warnings | <a href="#">Met Office</a><br><a href="#">Weather Warnings</a><br><a href="#">SEPA</a><br><a href="#">Natural Resources Wales</a> | <b>UK Weather Warnings</b><br>No weather warnings are in force for the UK<br><br><b>Flood Warnings</b><br>2 Flood Warnings and 23 Flood Alerts issued for England.<br>0 Flood Warning and 0 Flood Alerts issued for Scotland.<br>0 Flood Warnings and 0 Flood Alerts issued for Wales.  |

Contains public sector information licensed under the Open Government Licence v1.0

| Further Information        |   |
|----------------------------|---|
| BM Reports                 | <a href="https://www.bmreports.com">https://www.bmreports.com</a>   |
| System Balancing Reports   | <a href="https://www.nationalgrideso.com/balancing-data/system-balancing-reports">https://www.nationalgrideso.com/balancing-data/system-balancing-reports</a>     |
| Forecast Volumes and Costs | <a href="https://www.nationalgrideso.com/balancing-data/forecast-volumes-and-costs">https://www.nationalgrideso.com/balancing-data/forecast-volumes-and-costs</a> |
| NGESO Insights             | <a href="https://www.nationalgrideso.com/insights">https://www.nationalgrideso.com/insights</a>   |