

# National Electricity Transmission System Status Report

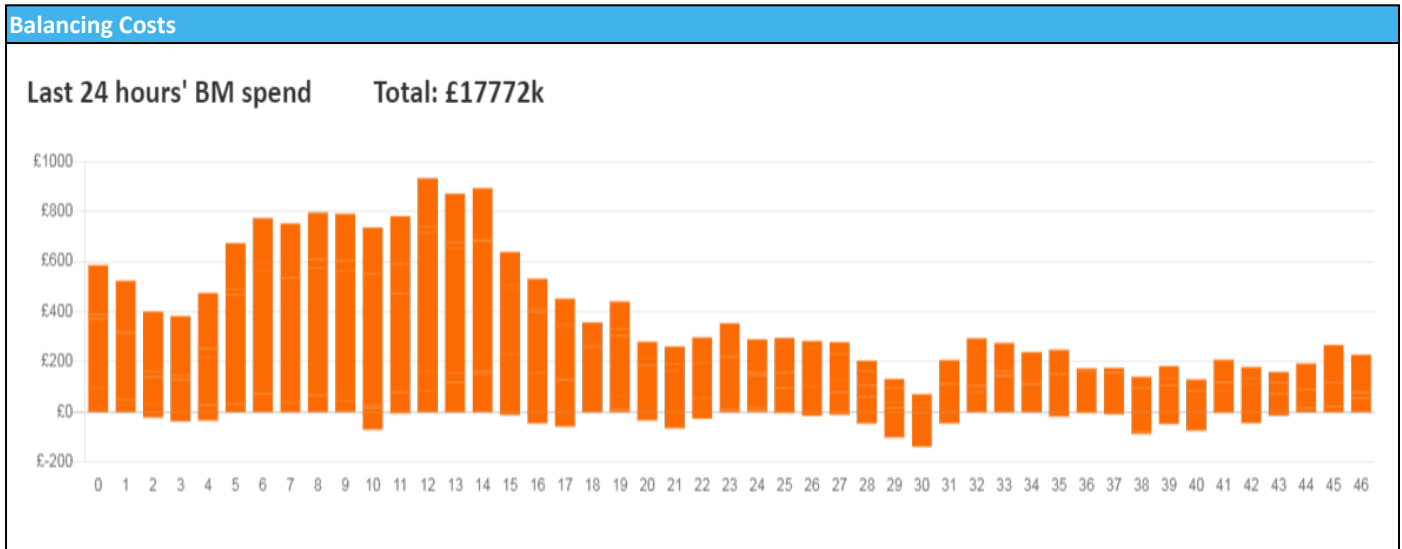


nationalgridESO

National Electricity Transmission System Status Report  
Thursday 10 March 2022

Today's High Level Risk Status Forecast for the next 24h			
General Status		Voltage	
Demand		System Inertia	
System Margins		Weather	
Generation		Transmission	
Active Constraints			
<a href="#">System Warning</a>			

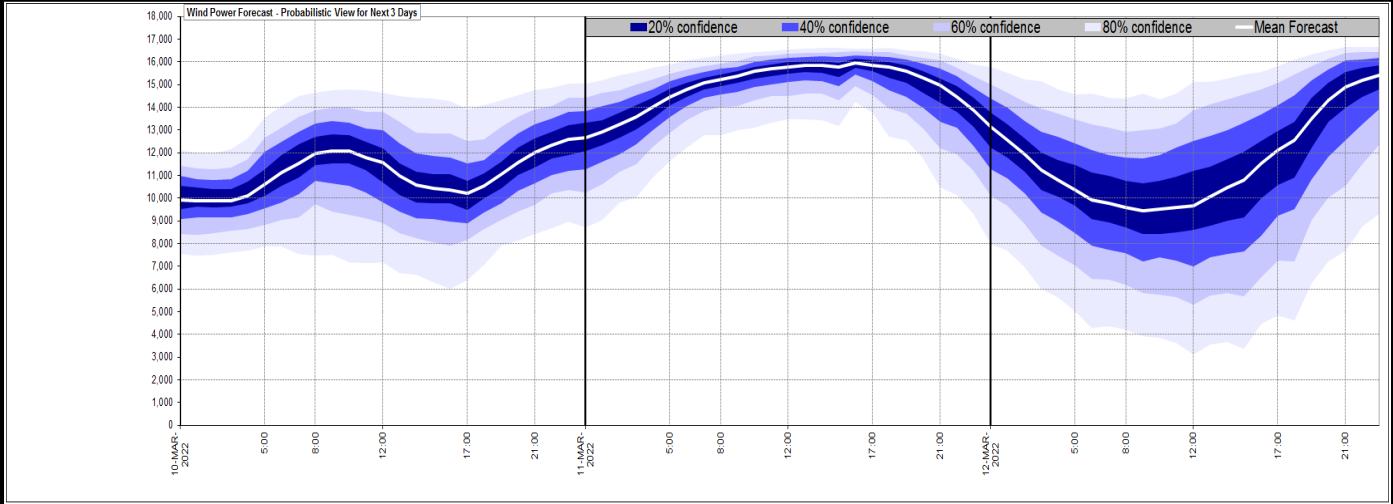
<a href="#">Today's Minimum De-Rated Margin</a>	11096 (SP 38)	
Current BMU Largest Loss Risk	Generation	1600 MW
	Demand	560 MW



Yesterday's Market Summary	
<a href="#">Cash Out Price (Max)</a>	£455.00 (SP 16)
<a href="#">Cash Out Price (Min)</a>	£94.50 (SP 28, 38,39)
<a href="#">Peak Demand Yesterday</a>	39,686 MW
Minimum Demand	21,800 MW

Interconnector Net Transfer Capacity (MWs)			
Today	Import	Export	Remarks
Netherlands (BritNed)	1016	1016	Fully Available
France (IFA2)	1014	1014	Fully Available
Belgium (Nemo)	1020	1020	Fully Available
Ireland (EWIC)	500	530	Fully Available
Northern Ireland (MOYLE)	500	500	Fully Available
NSL	1064	1064	Partially Available
ElecLink	0	0	Not yet commissioned
France IFA	500	500	Partially Available

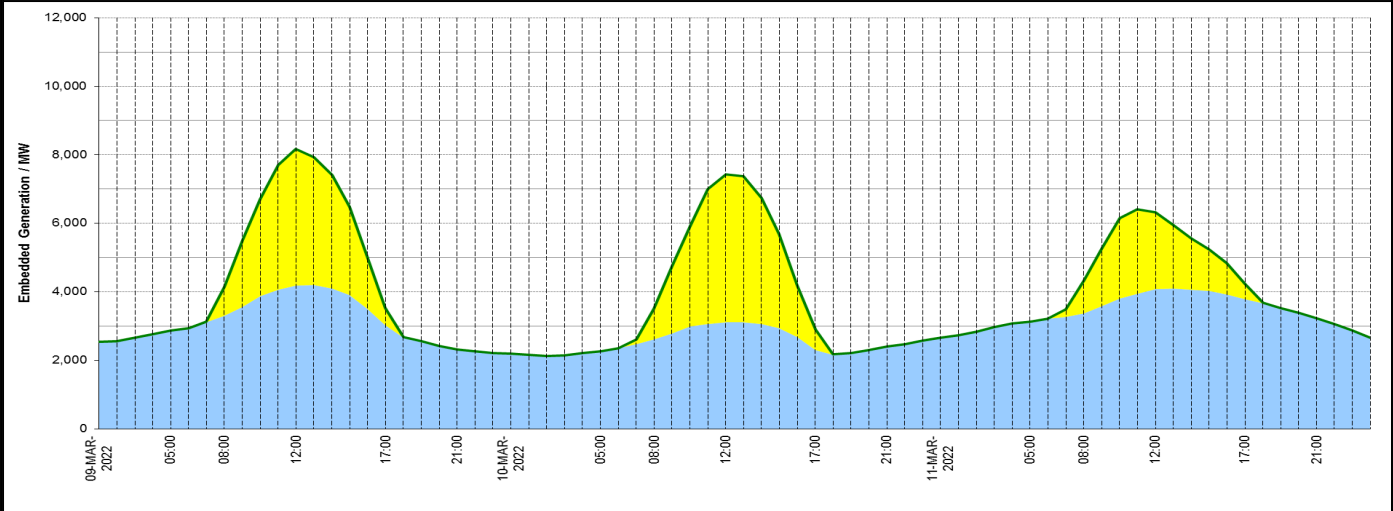
**Wind Power Forecast**



**Expected embedded generation (MWs)**

**Embedded Generation Forecast**

	09-MAR-2022					10-MAR-2022					11-MAR-2022						
	05:00	08:00	12:00	17:00	21:00	00:00	05:00	08:00	12:00	17:00	21:00	00:00	05:00	08:00	12:00	17:00	21:00
Solar (MW)	0	850	3990	507	0	0	0	902	4322	608	0	0	0	953	2248	450	0
Wind (MW)	2863	3295	4178	3023	2314	2188	2270	2612	3106	2302	2401	2662	3135	3376	4077	3791	3230
STOR (MW)	0	0	0	0	0	0	0	0	0	0	0	0	0	0	0	0	0
<b>Total (MW)</b>	<b>2863</b>	<b>4145</b>	<b>8168</b>	<b>3530</b>	<b>2314</b>	<b>2188</b>	<b>2270</b>	<b>3514</b>	<b>7428</b>	<b>2910</b>	<b>2401</b>	<b>2662</b>	<b>3135</b>	<b>4329</b>	<b>6325</b>	<b>4241</b>	<b>3230</b>



Weather	Source	Commentary
Latest forecast (Summary)	<a href="#">Met Office</a> <a href="#">SEPA</a> <a href="#">Natural Resources Wales</a>	<p><b>Today:</b> Patchy light rain across parts of Scotland, Northern Ireland, Wales and western England will slowly clear northeastwards to allow brighter skies. Very mild across eastern and southeast England where some sunny spells are possible. Patchy rain reaches southern England later.</p> <p><b>Tonight:</b> Cloud and patchy light rain moving northwards across some parts, though also some dry spells. Breezy and mild. Heavy rain reaching the far southwest later.</p>
General Weather Concerns e.g. wind, rain, snow, flooding, GB Weather Warnings	<a href="#">Met Office</a> <a href="#">Weather Warnings</a> <a href="#">SEPA</a> <a href="#">Natural Resources Wales</a>	<p><b>UK Weather Warnings</b> No weather warnings are in force for the UK</p> <p><b>Flood Warnings</b> 0 Flood Warnings and 0 Flood Alerts issued for England. 1 Flood Warning and 0 Flood Alerts issued for Scotland. 0 Flood Warnings and 0 Flood Alerts issued for Wales.</p>

Contains public sector information licensed under the Open Government Licence v1.0

Further Information	
BM Reports	<a href="https://www.bmreports.com">https://www.bmreports.com</a>
System Balancing Reports	<a href="https://www.nationalgrideso.com/balancing-data/system-balancing-reports">https://www.nationalgrideso.com/balancing-data/system-balancing-reports</a>
Forecast Volumes and Costs	<a href="https://www.nationalgrideso.com/balancing-data/forecast-volumes-and-costs">https://www.nationalgrideso.com/balancing-data/forecast-volumes-and-costs</a>
NGESO Insights	<a href="https://www.nationalgrideso.com/insights">https://www.nationalgrideso.com/insights</a>