

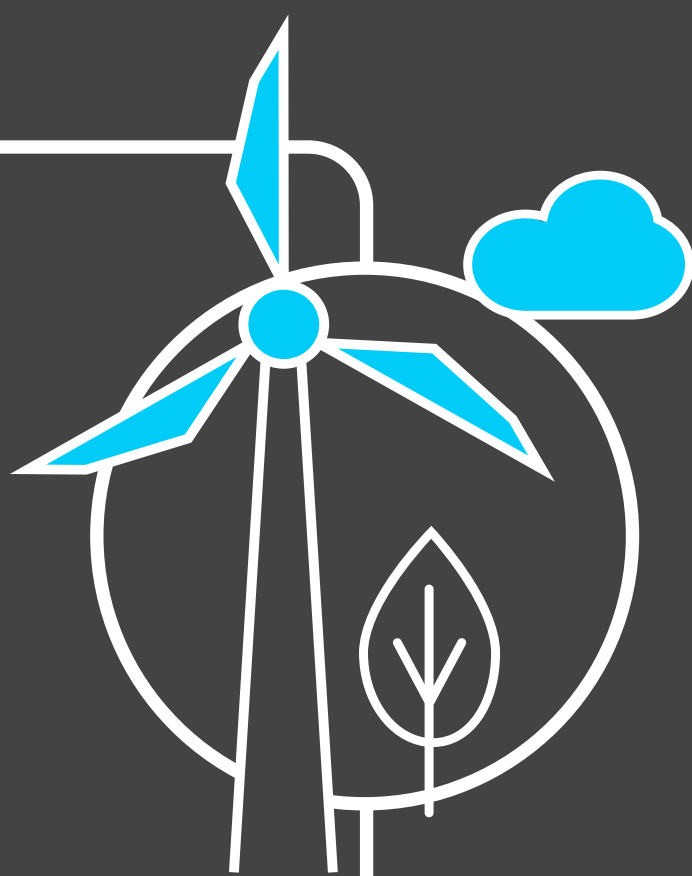
# Britain's Electricity Explained: February 2022

nationalgridESO



Gas	21.8%
Wind	39.7%
Nuclear	14.4%
Biomass	6.0%
Coal	2.8%
Solar	2.2%
Imports	9.8%
Hydro	2.6%
Storage	0.7%

## Zero carbon



**60%** of electricity came from zero carbon sources  
**82.5%** peak zero carbon share

## Carbon intensity



**126** gCO<sub>2</sub>/kWh average  Greenest time of the month  
 11:30am on 27th February

## Coal



**2.8%** use this month  
 This time **5 years ago** coal usage was **13.5%**  
**16** coal free hours

## Imports & exports

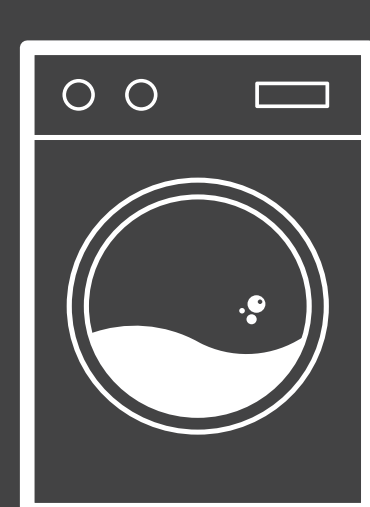


Energy in  
**4700 GWh**



Energy out  
**643 GWh**

## Demand



**23 TWh** run through network (that's 23 billion washing machine cycles).  
 Peak demand time was 5.30pm on 15th February.

## View in real-time



To view our data in real-time, please download the ESO app for Apple or Android.  
 Or visit [carbonintensity.org.uk](https://carbonintensity.org.uk)