

**National Electricity  
Transmission System Status Report**



national**grid**ESO

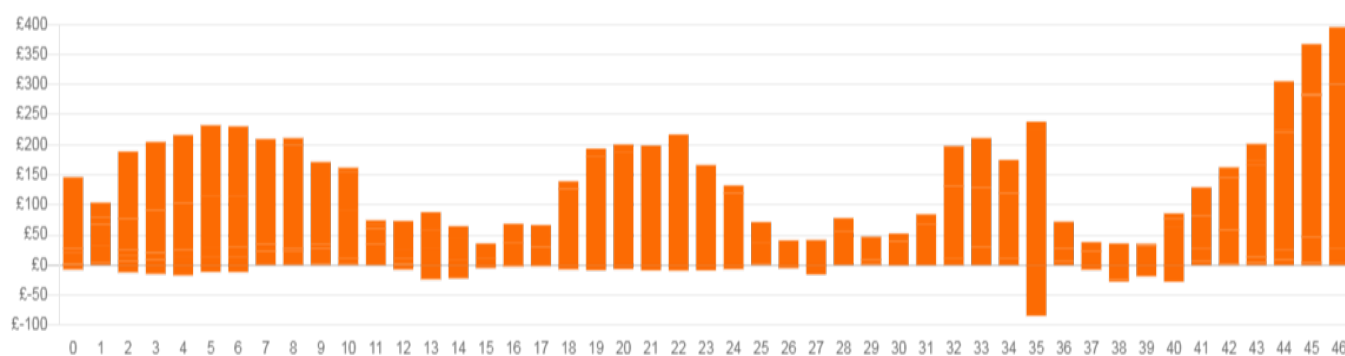
National Electricity Transmission System Status Report  
Sunday 20 February 2022

| Today's High Level Risk Status Forecast for the next 24h |  |                |  |
|--|--|----------------|--|
| General Status   |  | Voltage        |  |
| Demand   |  | System Inertia |  |
| System Margins   |  | Weather        |  |
| Generation   |  | Transmission   |  |
| Active Constraints                                       |  |                |  |
| <a href="#">System Warning</a>                           |  |                |  |

|   |                |         |
|---|----------------|---------|
| <a href="#">Today's Minimum De-Rated Margin</a> | 4085.40(SP 36) |         |
| Current BMU Largest Loss Risk                   | Generation     | 1700 MW |
|   | Demand         | 750 MW  |

Balancing Costs

Last 24 hours' BM spend Total: £6476k



Yesterday's Market Summary

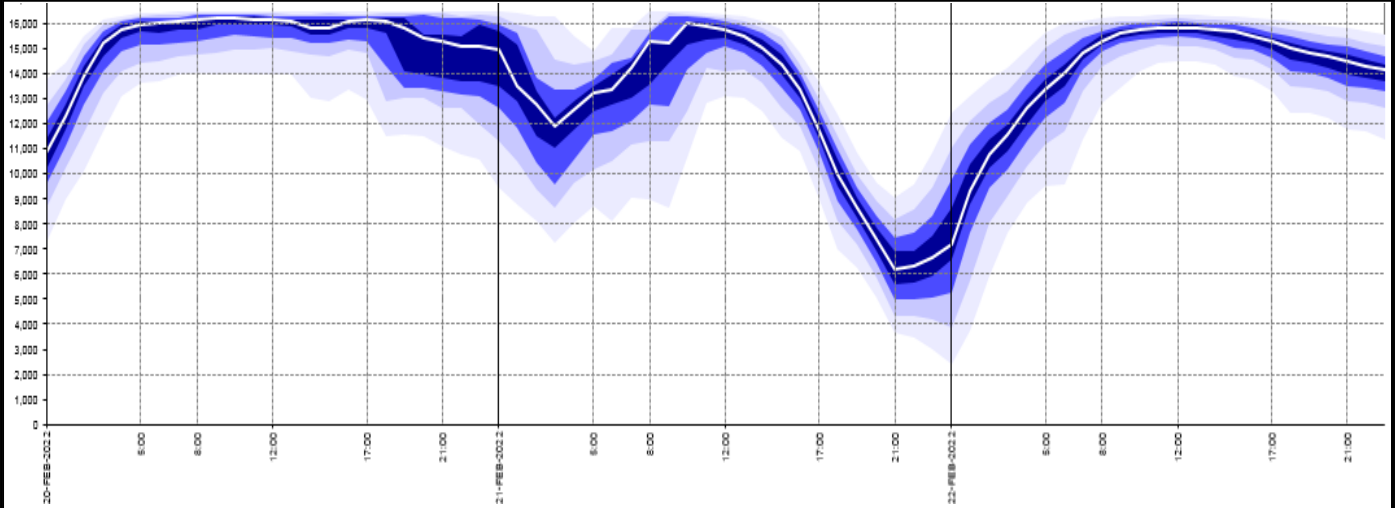
|                                       |               |
|---------------------------------------|---------------|
| <a href="#">Cash Out Price (Max)</a>  | £434 (SP 37)  |
| <a href="#">Cash Out Price (Min)</a>  | -£8.52 (SP 6) |
| <a href="#">Peak Demand Yesterday</a> | 37,711 MW     |
| Minimum Demand                        | 18,811 MW     |

Interconnector

Net Transfer Capacity (MWs)

| Today                    | Import | Export | Remarks              |
|--------------------------|--------|--------|----------------------|
| Netherlands (BritNed)    | 1100   | 1133   | Fully Available      |
| France (IFA2)            | 1014   | 1014   | Fully Available      |
| Belgium (Nemo)           | 1020   | 1020   | Fully Available      |
| Ireland (EWIC)           | 500    | 530    | Fully Available      |
| Northern Ireland (MOYLE) | 500    | 500    | Fully Available      |
| NSL                      | 1064   | 1064   | Partially Available  |
| ElecLink                 | 0      | 0      | Not yet commissioned |
| France IFA               | 1000   | 1000   | Partially Available  |

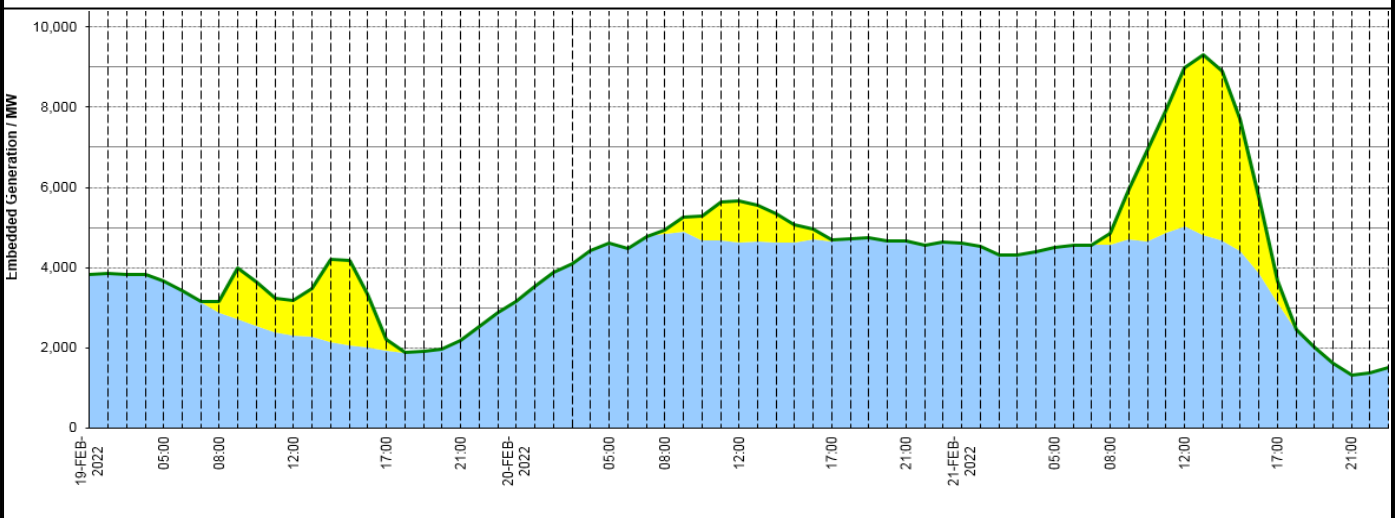
**Wind Power Forecast**



**Expected embedded generation (MWs)**

**Embedded Generation Forecast**

|                   | 19-FEB-2022 |             |             |             |             | 20-FEB-2022 |             |             |             |             | 21-FEB-2022 |             |             |             |             |             |             |
|-------------------|-------------|-------------|-------------|-------------|-------------|-------------|-------------|-------------|-------------|-------------|-------------|-------------|-------------|-------------|-------------|-------------|-------------|
|                   | 05:00       | 08:00       | 12:00       | 17:00       | 21:00       | 00:00       | 05:00       | 08:00       | 12:00       | 17:00       | 21:00       | 00:00       | 05:00       | 08:00       | 12:00       | 17:00       | 21:00       |
| Solar (MW)        | 0           | 274         | 862         | 278         | 0           | 0           | 0           | 99          | 1046        | 20          | 0           | 0           | 0           | 266         | 3956        | 512         | 0           |
| Wind (MW)         | 3675        | 2881        | 2311        | 1922        | 2170        | 3166        | 4609        | 4828        | 4622        | 4661        | 4662        | 4601        | 4504        | 4583        | 5017        | 3153        | 1317        |
| STOR (MW)         | 0           | 0           | 0           | 0           | 0           | 0           | 0           | 0           | 0           | 0           | 0           | 0           | 0           | 0           | 0           | 0           | 0           |
| <b>Total (MW)</b> | <b>3675</b> | <b>3155</b> | <b>3173</b> | <b>2200</b> | <b>2170</b> | <b>3166</b> | <b>4609</b> | <b>4927</b> | <b>5668</b> | <b>4681</b> | <b>4662</b> | <b>4601</b> | <b>4504</b> | <b>4849</b> | <b>8973</b> | <b>3665</b> | <b>1317</b> |



| Weather   | Source  | Commentary  |
|---|---|---|
| Latest forecast (Summary)   | <a href="#">Met Office</a><br><a href="#">SEPA</a><br><a href="#">Natural Resources Wales</a>                                     | <p><b>Today:</b><br/>Persistent, sometimes heavy rain for some northwestern areas, before heavy rain sweeps southeastwards, accompanied by very strong gusty winds for some places. Brighter, showery weather follows, showers wintry in northwest. Further gales, possibly severe; mild start, colder in northwest later..</p> <p><b>Tonight:</b><br/>Clear intervals and showers, these heavy and wintry in places, especially the west. Rain and snow crosses northern areas later. Gales or severe gales focused in the west.</p> |
| General Weather Concerns e.g. wind, rain, snow, flooding, GB Weather Warnings | <a href="#">Met Office</a><br><a href="#">Weather Warnings</a><br><a href="#">SEPA</a><br><a href="#">Natural Resources Wales</a> | <p><b>UK Weather Warnings</b></p> <p>Yellow warning of rain<br/>Areas affected: East Midlands   North East England   North West England   West Midlands   Yorkshire &amp; Humber</p> <p>ACTIVE Started at: 00:00 GMT on Sun 20 February Ends: 18:00 GMT on Sun 20 February<br/>Heavy rain expected to lead to some disruption on Sunday.</p> <p>Yellow warning of wind<br/>Areas affected: North West England   Northern Ireland   SW Scotland, Lothian Borders   Strathclyde   Wales   Yorkshire &amp; Humber</p>                    |

| Weather | Source | Commentary  |
|---------|--------|---|
|         |        | <p>Starts: 12:00 GMT on Sun 20 February Ends: 12:00 GMT on Mon 21 February<br/>Very strong winds may cause disruption across Northern Ireland, southwest Scotland and Irish Sea coasts, particularly on Sunday night.</p> <p>Yellow warning of wind<br/>Areas affected: East Midlands   East of England   London &amp; South East England   North West England   South West England   Wales   West Midlands   Yorkshire &amp; Humber</p> <p>Starts: 12:00 GMT on Sun 20 February Ends: 15:00 GMT on Mon 21 February<br/>Further periods of strong winds are expected across much of England and Wales on Sunday and Monday which may cause some disruption.</p> |
|         |        | <p><b>Flood Warnings</b><br/>15 Flood warning and 112 Flood Alerts issued for England<br/>5 Flood Warning and 10 Flood Alerts issued for Scotland.<br/>5 Flood Warning and 25 Flood Alerts issued for Wales</p>   |

*Contains public sector information licensed under the Open Government Licence v1.0*

| Further Information        |   |
|----------------------------|---|
| BM Reports                 | <a href="https://www.bmreports.com">https://www.bmreports.com</a>   |
| System Balancing Reports   | <a href="https://www.nationalgrideso.com/balancing-data/system-balancing-reports">https://www.nationalgrideso.com/balancing-data/system-balancing-reports</a>     |
| Forecast Volumes and Costs | <a href="https://www.nationalgrideso.com/balancing-data/forecast-volumes-and-costs">https://www.nationalgrideso.com/balancing-data/forecast-volumes-and-costs</a> |
| NGESO Insights             | <a href="https://www.nationalgrideso.com/insights">https://www.nationalgrideso.com/insights</a>   |