

**National Electricity
Transmission System Status Report**

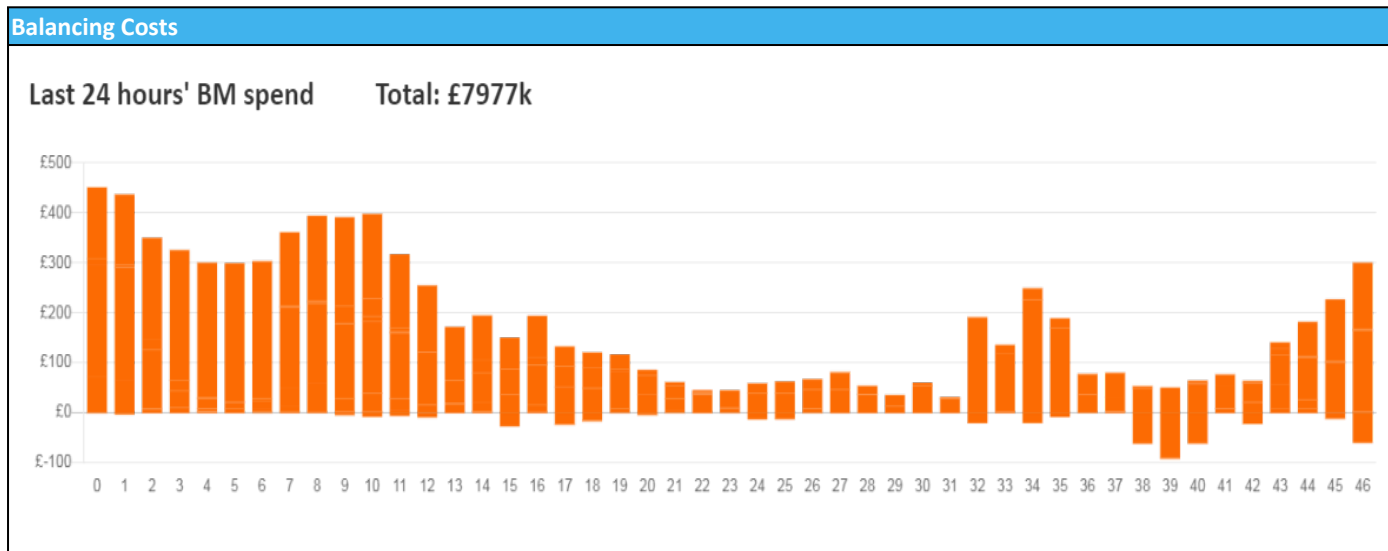


national**grid**ESO

National Electricity Transmission System Status Report
Tuesday 01 February 2022

Today's High Level Risk Status Forecast for the next 24h			
General Status		Voltage	
Demand		System Inertia	
System Margins		Weather	
Generation		Transmission	
Active Constraints			
System Warning			

Today's Minimum De-Rated Margin	12850 (SP 35)	
Current BMU Largest Loss Risk	Generation	1400 MW
	Demand	560 MW



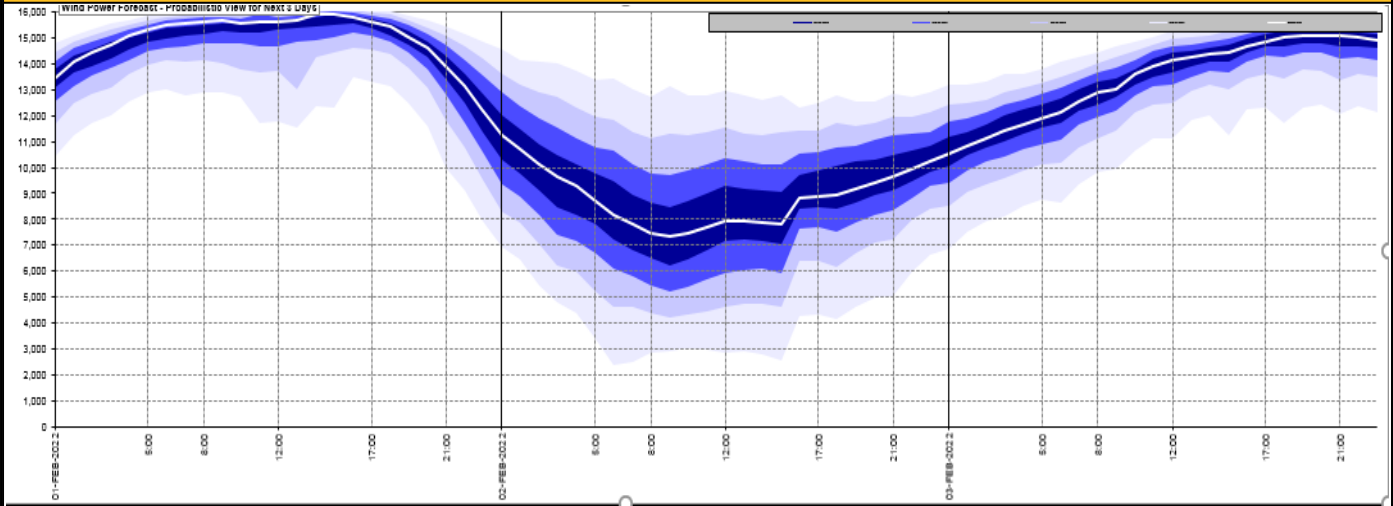
Yesterday's Market Summary

Cash Out Price (Max)	£300.00 (SP 34)
Cash Out Price (Min)	−£48.7 (SP 7)
Peak Demand Yesterday	44,190 MW
Minimum Demand	21,525 MW

Interconnector Net Transfer Capacity (MWs)

Today	Import	Export	Remarks
Netherlands (BritNed)	1100	1133	Fully Available
France (IFA2)	1014	1014	Fully Available
Belgium (Nemo)	1020	1020	Fully Available
Ireland (EWIC)	500	530	Fully Available
Northern Ireland (MOYLE)	500	500	Fully Available
NSL	703	703	Partially Available
ElecLink	0	0	Not yet commissioned
France IFA	500	500	Partially Available

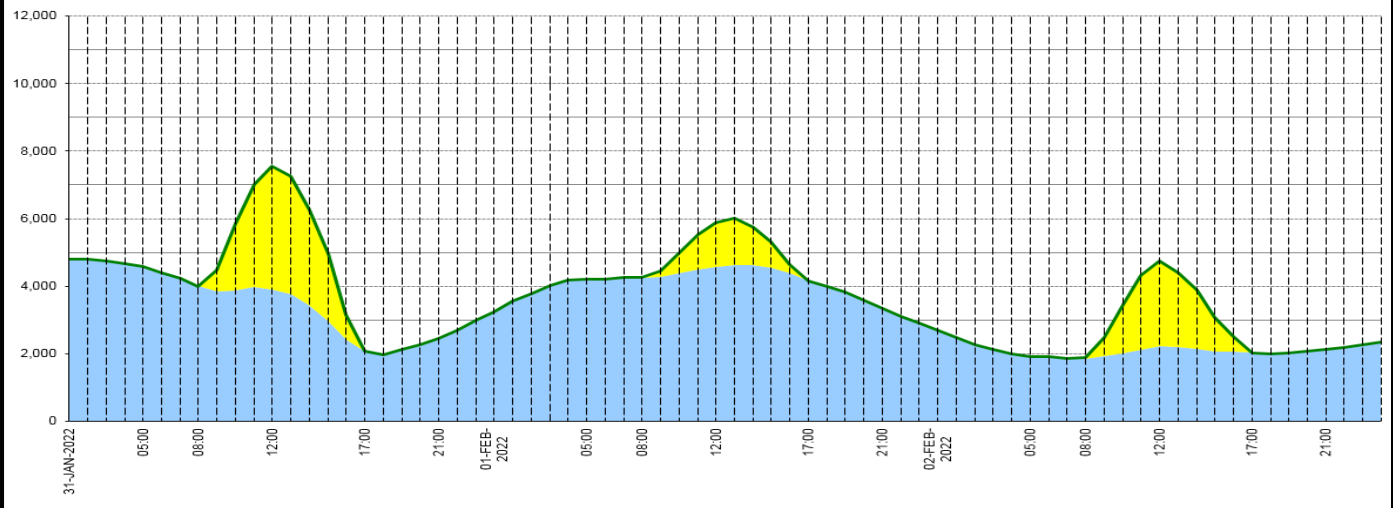
Wind Power Forecast



Expected embedded generation (MWs)

Embedded Generation Forecast

	31-JAN-2022					01-FEB-2022						02-FEB-2022					
	05:00	08:00	12:00	17:00	21:00	00:00	05:00	08:00	12:00	17:00	21:00	00:00	05:00	08:00	12:00	17:00	21:00
Solar (MW)	0	2	3660	12	0	0	0	0	1306	0	0	0	0	34	2517	0	0
Wind (MW)	4583	4002	3899	2066	2460	3229	4194	4247	4573	4158	3352	2698	1916	1848	2226	2028	2117
STOR (MW)	0	0	0	0	0	0	0	0	0	0	0	0	0	0	0	0	0
Total (MW)	4583	4004	7559	2078	2460	3229	4194	4247	5879	4158	3352	2698	1916	1882	4743	2028	2117



Weather	Source	Commentary
Latest forecast (Summary)	Met Office SEPA Natural Resources Wales	<p>Today: Cloudy and mild for most parts with some patchy light rain and drizzle. Brighter weather moving south across Scotland, northern and eastern England, whilst wintry showers affect the far northeast. Windy, with severe gales for northeast Scotland.</p> <p>Tonight: Showers and winds in the far northeast easing, then turning clear and chilly for a time. Cloud, rain and drizzle in the west moving eastwards later.</p>
General Weather Concerns e.g. wind, rain, snow, flooding, GB Weather Warnings	Met Office Weather Warnings SEPA Natural Resources Wales	<p>UK Weather Warnings Yellow warning of wind Areas affected: Central, Tayside & Fife Grampian Highlands & Eilean Siar Orkney & Shetland</p> <p>Starts: 06:00 GMT on Tue 1 February Ends: 18:00 GMT on Tue 1 February Strong winds on Tuesday may lead to some disruption.</p> <ul style="list-style-type: none"> - Some short term loss of power and other services is possible - Probably some bus and train services affected, with some journeys taking longer - It's possible that some coastal routes, sea fronts and coastal communities will be

Weather	Source	Commentary
		affected by spray and/or large waves
		Flood Warnings 2 Flood warning and 16 Flood Alerts issued for England 1 Flood Warning and 2 Flood Alert issued for Scotland. No flood warnings are currently in force for Wales

Contains public sector information licensed under the Open Government Licence v1.0

Further Information	
BM Reports	https://www.bmreports.com
System Balancing Reports	https://www.nationalgrideso.com/balancing-data/system-balancing-reports
Forecast Volumes and Costs	https://www.nationalgrideso.com/balancing-data/forecast-volumes-and-costs
NGESO Insights	https://www.nationalgrideso.com/insights