

**National Electricity  
Transmission System Status Report**

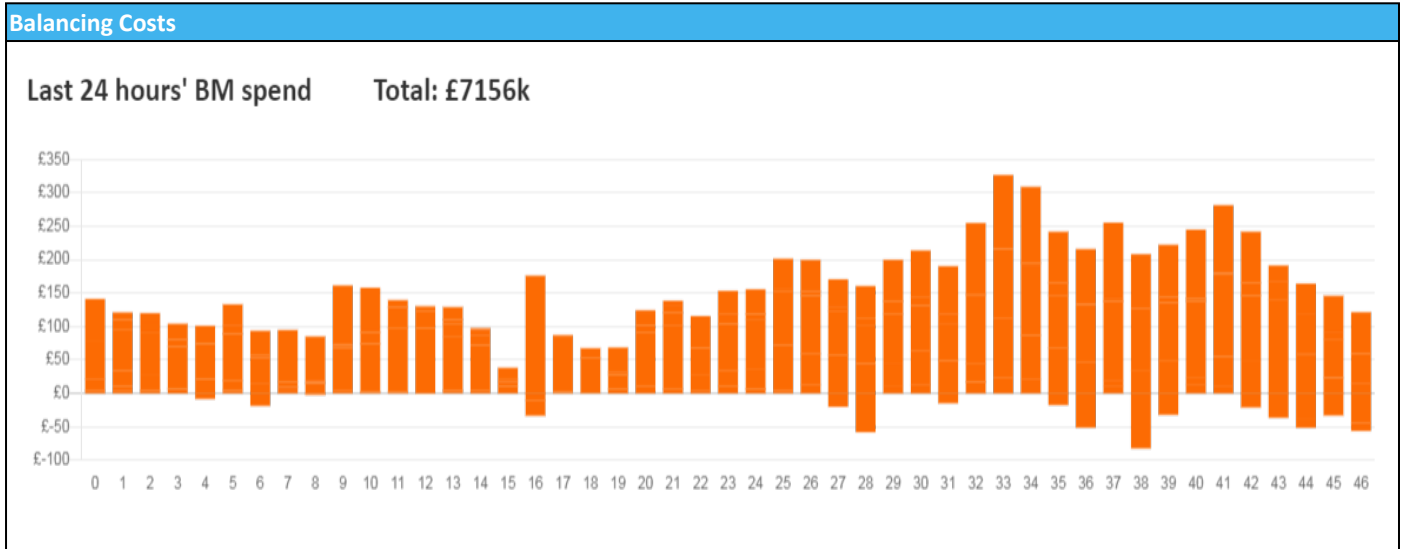


national**grid**ESO

National Electricity Transmission System Status Report  
Monday 17 January 2022

Today's High Level Risk Status Forecast for the next 24h			
General Status		Voltage	
Demand		System Inertia	
System Margins		Weather	
Generation		Transmission	
Active Constraints			
<a href="#">System Warning</a>			

<a href="#">Today's Minimum De-Rated Margin</a>	-414.69. (sp 36)	
Current BMU Largest Loss Risk	Generation	1260 MW
	Demand	560 MW



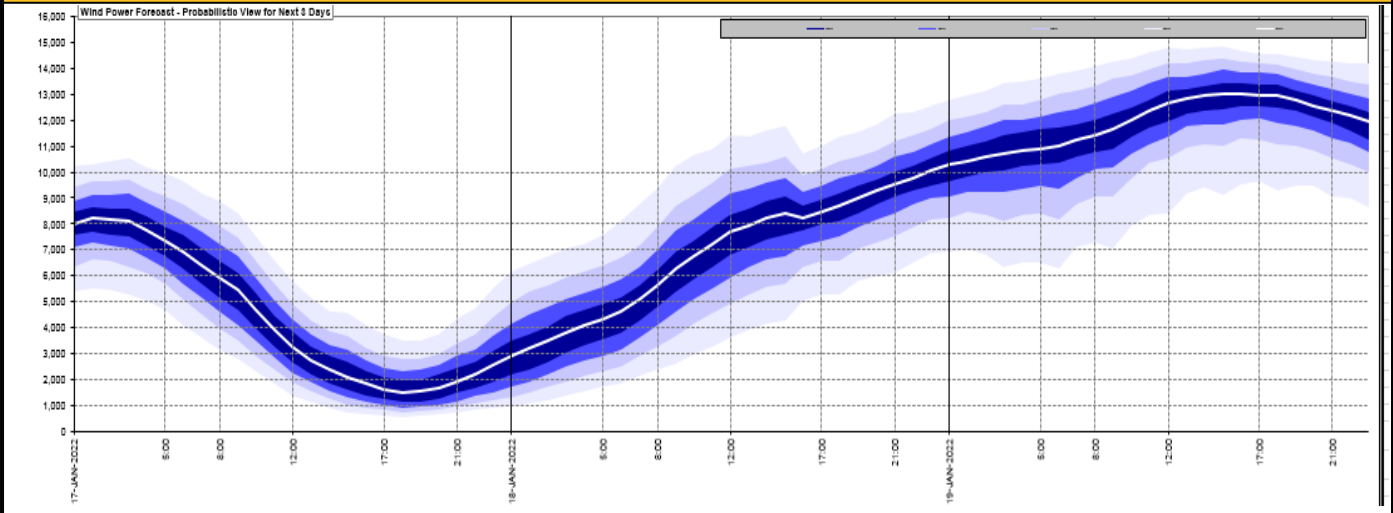
**Yesterday's Market Summary**

<a href="#">Cash Out Price (Max)</a>	£289 (SP 18)
<a href="#">Cash Out Price (Min)</a>	£0 (SP 45)
<a href="#">Peak Demand Yesterday</a>	41,612MW
Minimum Demand	23,623 MW

**Interconnector Net Transfer Capacity (MWs)**

Today	Import	Export	Remarks
Netherlands (BritNed)	1100	1133	Fully Available
France (IFA2)	1014	1014	Fully Available
Belgium (Nemo)	1020	1020	Fully Available
Ireland (EWIC)	500	530	Fully Available
Northern Ireland (MOYLE)	500	500	Fully Available
NSL	703	703	Partially Available
ElecLink	0	0	Not yet commissioned
France IFA	1000	1000	Partially Available

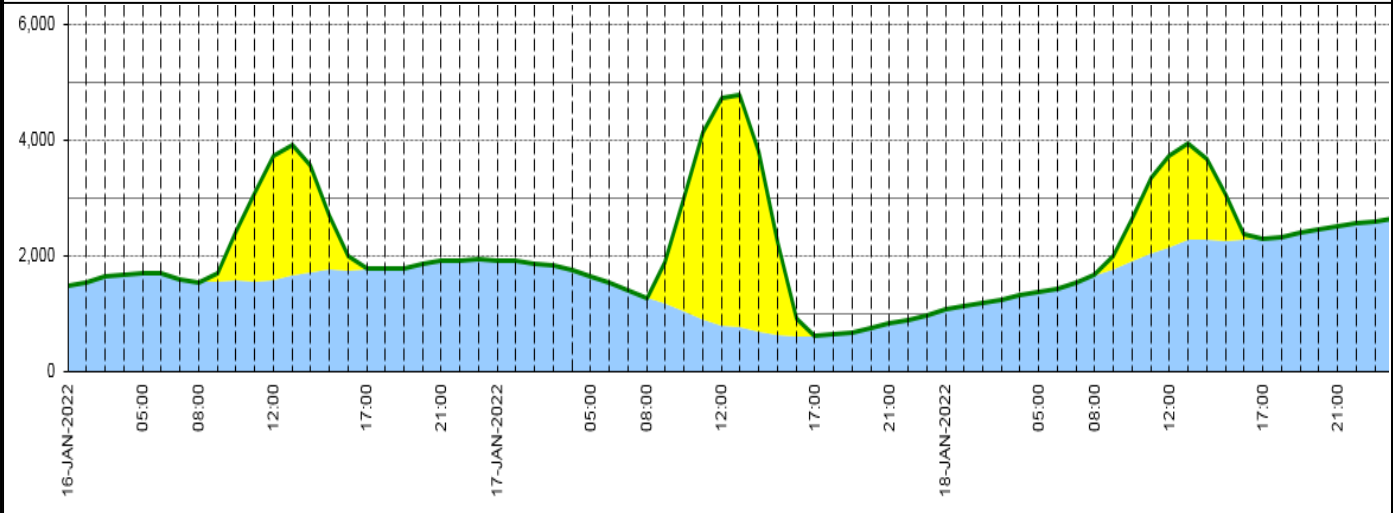
**Wind Power Forecast**



**Expected embedded generation (MWs)**

**Embedded Generation Forecast**

	16-JAN-2022					17-JAN-2022					18-JAN-2022						
	05:00	08:00	12:00	17:00	21:00	00:00	05:00	08:00	12:00	17:00	21:00	00:00	05:00	08:00	12:00	17:00	21:00
Solar (MW)	0	0	2150	4	0	0	0	0	3926	0	0	0	0	0	1577	0	0
Wind (MW)	1697	1547	1564	1767	1912	1918	1655	1276	804	616	825	1063	1374	1660	2142	2298	2512
STOR (MW)	0	0	0	0	0	0	0	0	0	0	0	0	0	0	0	0	0
<b>Total (MW)</b>	<b>1697</b>	<b>1547</b>	<b>3714</b>	<b>1771</b>	<b>1912</b>	<b>1918</b>	<b>1655</b>	<b>1276</b>	<b>4730</b>	<b>616</b>	<b>825</b>	<b>1063</b>	<b>1374</b>	<b>1660</b>	<b>3719</b>	<b>2298</b>	<b>2512</b>



Weather	Source	Commentary
Latest forecast (Summary)	<a href="#">Met Office</a> <a href="#">SEPA</a> <a href="#">Natural Resources Wales</a>	<p><b>Today:</b> After a chilly start most areas will be fine and dry with plenty of sunshine today. Parts of the far north and west of Scotland, northwest England and the Midlands will be cloudier at times though. Breezy in the north</p> <p><b>Tonight:</b> Fog, dense in places, developing over eastern Wales and southern, eastern and central England this evening and persisting overnight. Otherwise mainly dry with clear spells. Cold with frost.</p>
General Weather Concerns e.g. wind, rain, snow, flooding, GB Weather Warnings	<a href="#">Met Office</a> <a href="#">Weather Warnings</a> <a href="#">SEPA</a> <a href="#">Natural Resources Wales</a>	<p><b>UK Weather Warnings</b> No weather warnings are in force for the UK</p> <p><b>Flood Warnings</b> 0 Flood Warnings and 0 alerts in England 0 Flood Warnings and 0 alerts in Scotland 0 Flood Warnings and 0 alerts in Wales</p>

Contains public sector information licensed under the Open Government Licence v1.0

Further Information	
BM Reports	<a href="https://www.bmreports.com">https://www.bmreports.com</a>
System Balancing Reports	<a href="https://www.nationalgrideso.com/balancing-data/system-balancing-reports">https://www.nationalgrideso.com/balancing-data/system-balancing-reports</a>
Forecast Volumes and Costs	<a href="https://www.nationalgrideso.com/balancing-data/forecast-volumes-and-costs">https://www.nationalgrideso.com/balancing-data/forecast-volumes-and-costs</a>
NGESO Insights	<a href="https://www.nationalgrideso.com/insights">https://www.nationalgrideso.com/insights</a>