

**National Electricity
Transmission System Status Report**

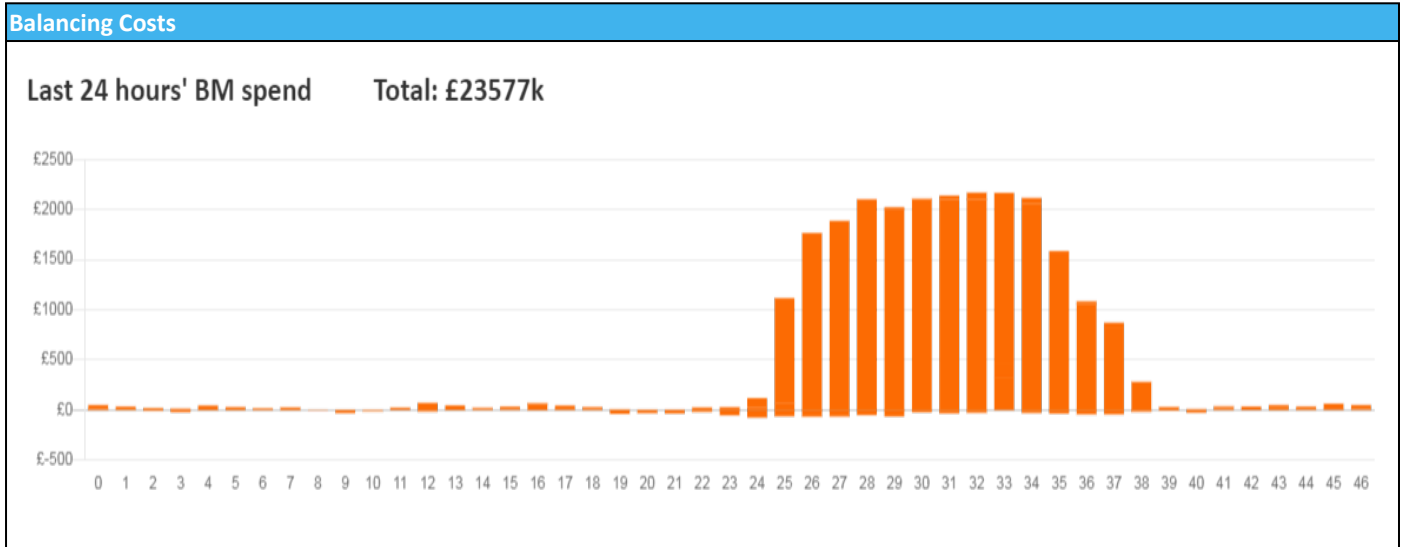


national**grid**ESO

National Electricity Transmission System Status Report
Saturday 15 January 2022

Today's High Level Risk Status Forecast for the next 24h			
General Status		Voltage	
Demand		System Inertia	
System Margins		Weather	
Generation		Transmission	
Active Constraints			
System Warning			

Today's Minimum De-Rated Margin	3682. (sp 36)	
Current BMU Largest Loss Risk	Generation	1260 MW
	Demand	560 MW



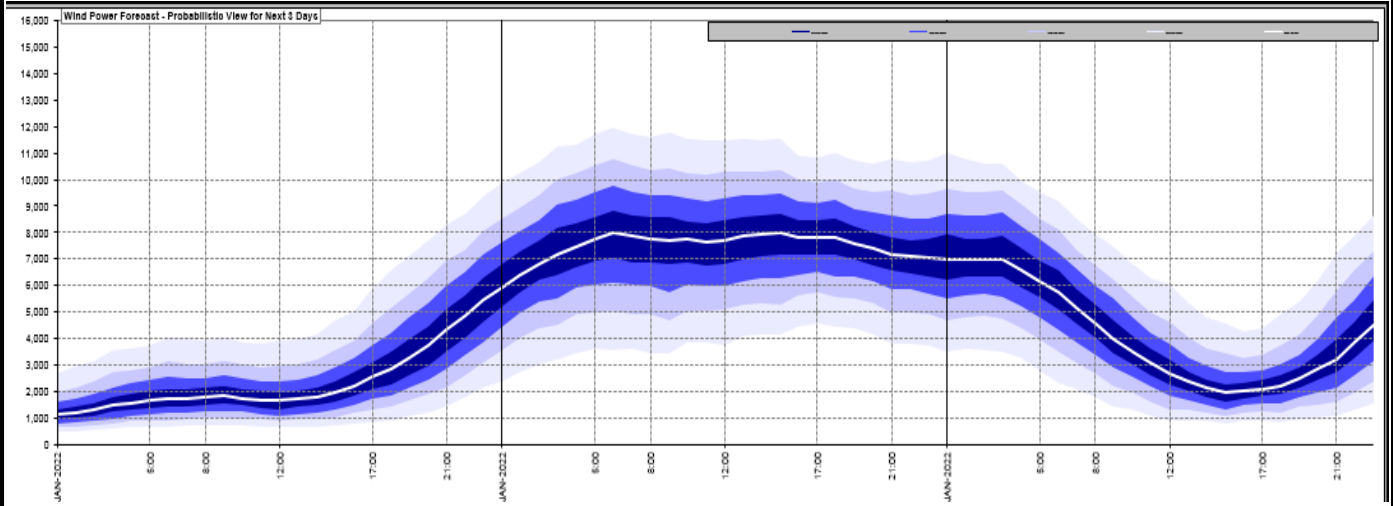
Yesterday's Market Summary

Cash Out Price (Max)	£2950 (SP 35)
Cash Out Price (Min)	£133.20 (SP 5)
Peak Demand Yesterday	42,832 MW
Minimum Demand	25,031 MW

Interconnector Net Transfer Capacity (MWs)

Today	Import	Export	Remarks
Netherlands (BritNed)	1100	1133	Fully Available
France (IFA2)	1014	1014	Fully Available
Belgium (Nemo)	1020	1020	Fully Available
Ireland (EWIC)	500	530	Fully Available
Northern Ireland (MOYLE)	500	500	Fully Available
NSL	703	703	Partially Available
ElecLink	0	0	Not yet commissioned
France IFA	1000	1000	Partially Available

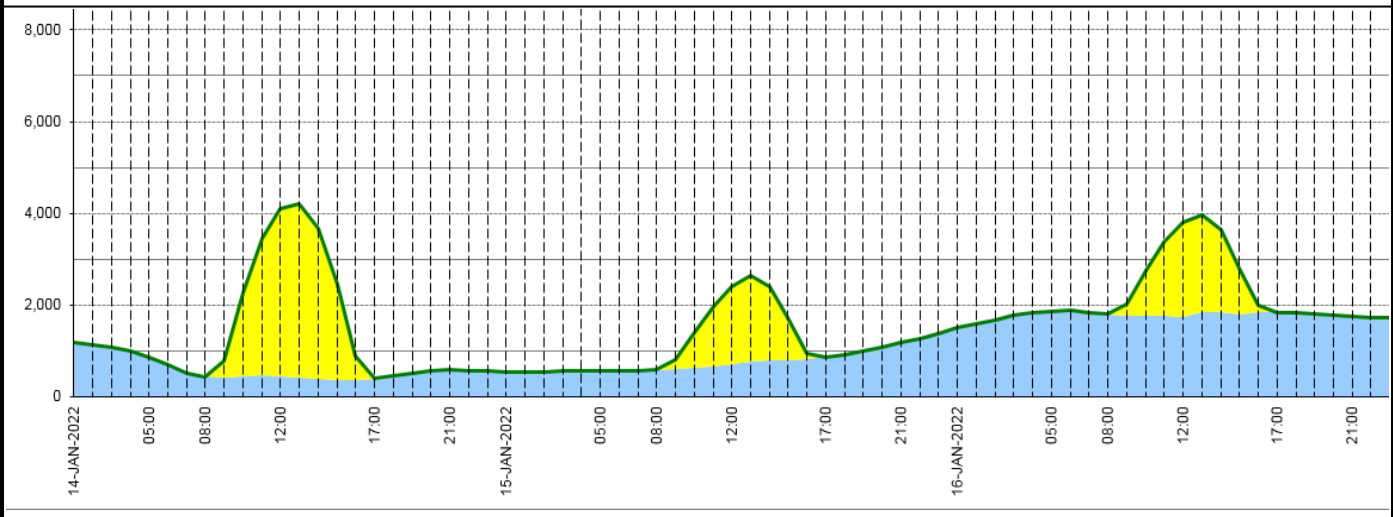
Wind Power Forecast



Expected embedded generation (MWs)

Embedded Generation Forecast

Embedded Generation Estimates																Last run: 15-Jan-2022 04:48:50	
	14-JAN-2022					15-JAN-2022					16-JAN-2022						
	05:00	08:00	12:00	17:00	21:00	00:00	05:00	08:00	12:00	17:00	21:00	00:00	05:00	08:00	12:00	17:00	21:00
Solar (MW)	0	0	3640	1	0	0	0	0	1682	0	0	0	0	0	2071	0	0
Wind (MW)	861	442	455	401	580	534	566	579	705	868	1177	1507	1867	1802	1727	1841	1744
STOR (MW)	0	0	0	0	0	0	0	0	0	0	0	0	0	0	0	0	0
Total (MW)	861	442	4095	402	580	534	566	579	2387	868	1177	1507	1867	1802	3798	1841	1744



Weather	Source	Commentary
Latest forecast (Summary)	Met Office SEPA Natural Resources Wales	<p>Today: Fog across parts of central, eastern and northern England slowly lifting to low cloud, and feeling chilly. Elsewhere, most parts dry with large amounts of cloud and some sunny intervals. A few showers affecting western parts later..</p> <p>Tonight: A few showers affecting southwestern parts, else mostly dry with broken cloud and isolated frost. A band of rain moving southeastwards across Scotland and Northern Ireland..</p>
General Weather Concerns e.g. wind, rain, snow, flooding, GB Weather Warnings	Met Office Weather Warnings SEPA Natural Resources Wales	<p>UK Weather Warnings Yellow warning of fog Areas affected: East Midlands East of England London & South East England North East England North West England South West England Wales West Midlands Yorkshire & Humber</p> <p>ACTIVE Started at: 19:00 GMT on Fri 14 January Ends: 11:00 GMT on Sat 15 January</p> <p>Flood Warnings 0 Flood Warnings and 0 alerts in England</p>

Weather	Source	Commentary
		0 Flood Warnings and 0 alerts in Scotland 0 Flood Warnings and 0 alerts in Wales

Contains public sector information licensed under the Open Government Licence v1.0

Further Information	
BM Reports	https://www.bmreports.com
System Balancing Reports	https://www.nationalgrideso.com/balancing-data/system-balancing-reports
Forecast Volumes and Costs	https://www.nationalgrideso.com/balancing-data/forecast-volumes-and-costs
NGESO Insights	https://www.nationalgrideso.com/insights