

**National Electricity
Transmission System Status Report**

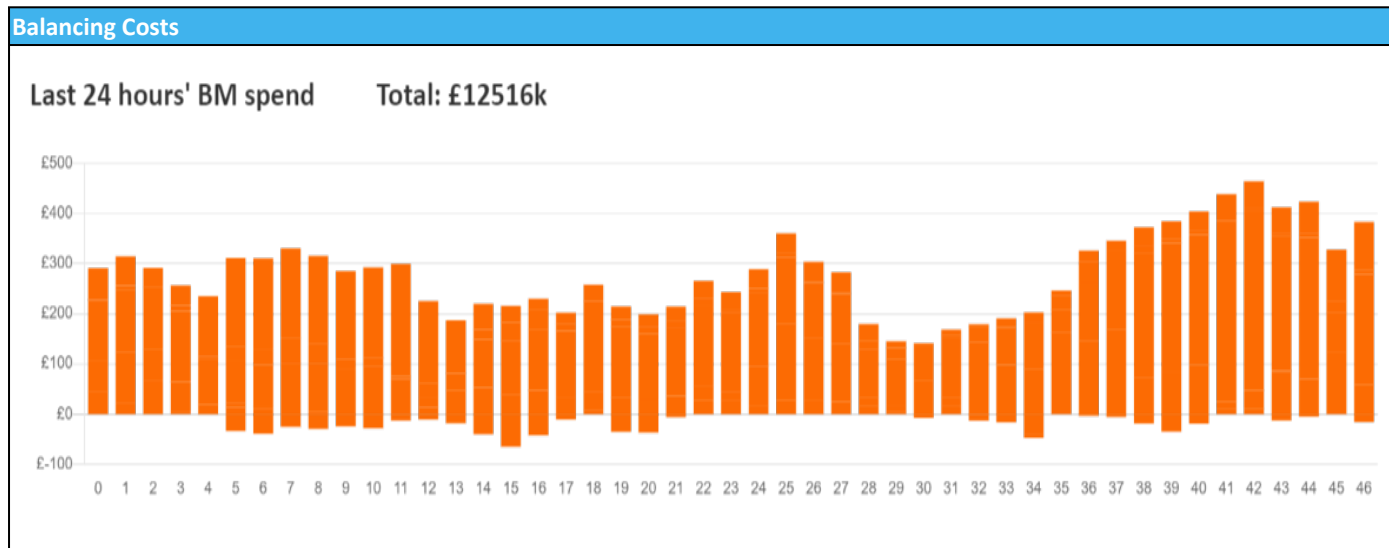


national**grid**ESO

National Electricity Transmission System Status Report
Sunday 26 December 2021

Today's High Level Risk Status Forecast for the next 24h			
General Status		Voltage	
Demand		System Inertia	
System Margins		Weather	
Generation		Transmission	
Active Constraints			
System Warning			

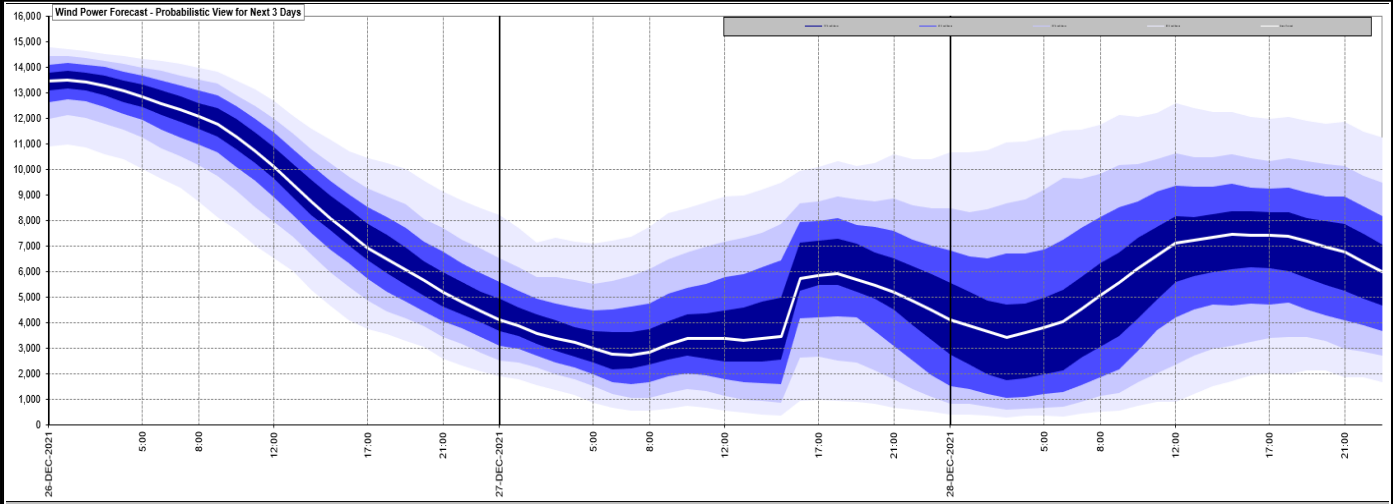
Today's Minimum De-Rated Margin	14801 (SP 41)	
Current BMU Largest Loss Risk	Generation	1260 MW
	Demand	1000 MW



Yesterday's Market Summary	
Cash Out Price (Max)	£240.00 (SP 1 & SP 3 - SP 5)
Cash Out Price (Min)	-£54.20 (SP 13)
Peak Demand Yesterday	34,924 MW
Minimum Demand	19,500 MW

Interconnector Net Transfer Capacity (MWs)			
Today	Import	Export	Remarks
Netherlands (BritNed)	1100	1133	Fully Available
France (IFA2)	1014	1014	Fully Available
Belgium (Nemo)	1020	1020	Fully Available
Ireland (EWIC)	500	530	Fully Available
Northern Ireland (MOYLE)	500	500	Fully Available
NSL	698	793	Partially Available
ElecLink	0	0	Not yet commissioned
France IFA	1000	1000	Partially Available

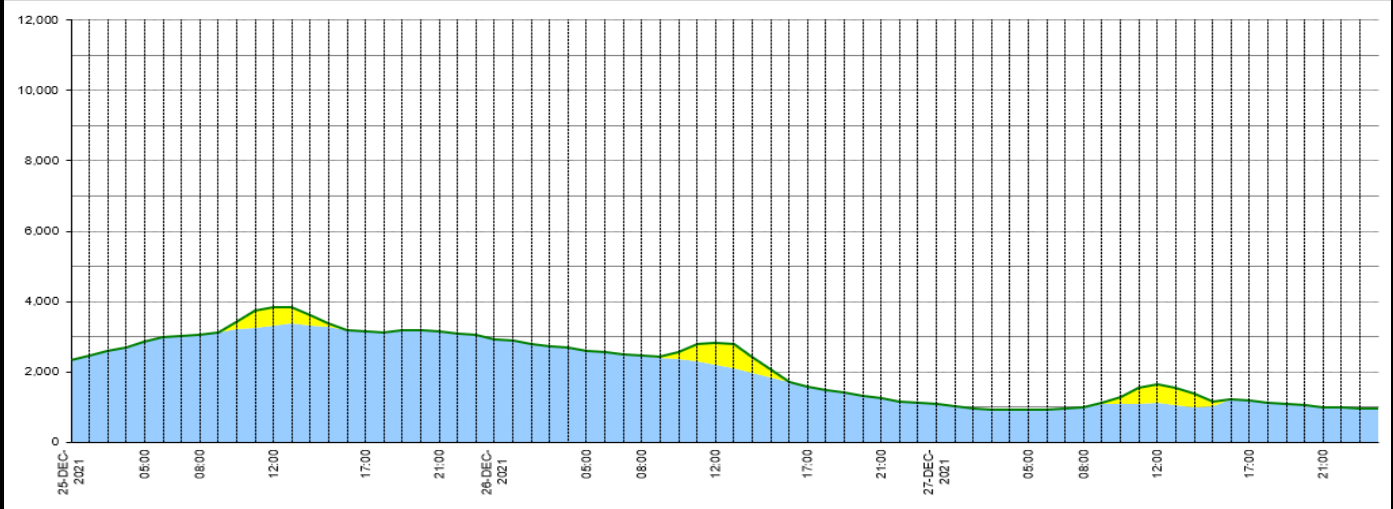
Wind Power Forecast



Expected embedded generation (MWs)

Embedded Generation Forecast

	25-DEC-2021					26-DEC-2021					27-DEC-2021						
	05:00	08:00	12:00	17:00	21:00	00:00	05:00	08:00	12:00	17:00	21:00	00:00	05:00	08:00	12:00	17:00	21:00
Solar (MW)	0	0	523	0	0	0	0	0	622	0	0	0	0	0	523	0	0
Wind (MW)	2849	3046	3309	3135	3166	2922	2608	2454	2202	1506	1237	1071	908	986	1126	1173	1002
STOR (MW)	0	0	0	0	0	0	0	0	0	0	0	0	0	0	0	0	0
Total (MW)	2849	3046	3832	3135	3166	2922	2608	2454	2824	1586	1237	1071	908	986	1649	1173	1002



Weather	Source	Commentary
Latest forecast (Summary)	Met Office SEPA Natural Resources Wales	<p>Today: Rain and snow, mainly on hills, in parts of northern England and Scotland, will ease. Elsewhere much low cloud inland, with only slow improvements, while some coastal areas see scattered heavy showers. Breezy and chilly in north, mild further south.</p> <p>Tonight: Showery rain in parts of Scotland, while rain may reach the far southwest later. Elsewhere, odd coastal showers but many places dry with low cloud or fog. Milder generally.</p>
General Weather Concerns e.g. wind, rain, snow, flooding, GB Weather Warnings	Met Office Weather Warnings SEPA Natural Resources Wales	<p>UK Weather Warnings Yellow warning of rain Areas affected: Northern Ireland</p> <p>ACTIVE Started at: 15:00 GMT on Sat 25 December Ends: 09:00 GMT on Sun 26 December Heavy rain across parts of County Down and Armagh later today and overnight may lead some localised flooding and travel disruption.</p> <p>Yellow warning of snow Areas affected: Central, Tayside & Fife East Midlands North East England North West England SW Scotland, Lothian Borders Strathclyde Yorkshire & Humber</p>

Weather	Source	Commentary
		<p>ACTIVE</p> <p>Started at: 00:15 GMT on Sun 26 December Ends: 12:00 GMT on Sun 26 December</p> <p>Snow and strong winds are expected, leading to possible disruption, mainly to travel over higher ground.</p>
		<p>Flood Warnings</p> <p>5 Flood Warnings and 53 flood alerts in England</p> <p>0 Flood Warnings and flood alerts in Scotland</p> <p>0 Flood Warnings and 3 flood alerts in Wales</p>

Contains public sector information licensed under the Open Government Licence v1.0

Further Information	
BM Reports	https://www.bmreports.com
System Balancing Reports	https://www.nationalgrideso.com/balancing-data/system-balancing-reports
Forecast Volumes and Costs	https://www.nationalgrideso.com/balancing-data/forecast-volumes-and-costs
NGESO Insights	https://www.nationalgrideso.com/insights