

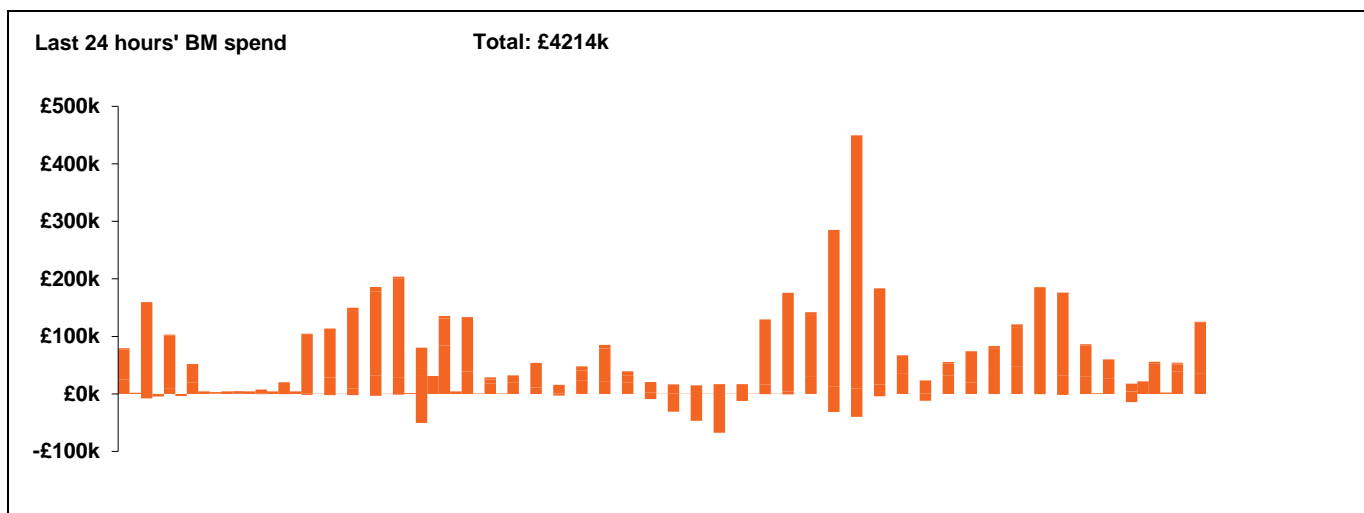
**National Electricity  
Transmission System Status Report**



**National Electricity Transmission System Status Report**  
Saturday 11 December 2021

Today's High Level Risk Status Forecast for the next 24h			
General Status		Voltage	
Demand		System Inertia	
System Margins		Weather	
Generation		Transmission	
Active Constraints			

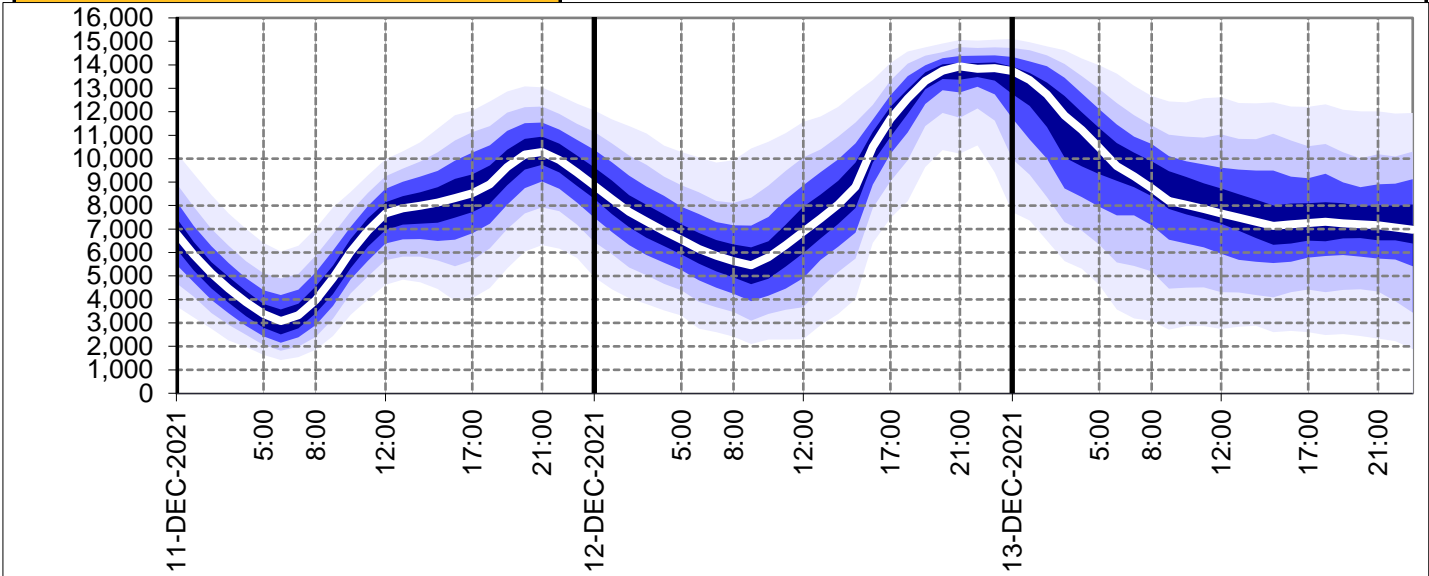
<a href="#">Today's Minimum De-Rated Margin</a>	5815.59 (SP 22)	
<a href="#">System Warnings</a>	None	
Current BMU Largest Loss Risk	Generation	1260 MW
	Demand	560 MW



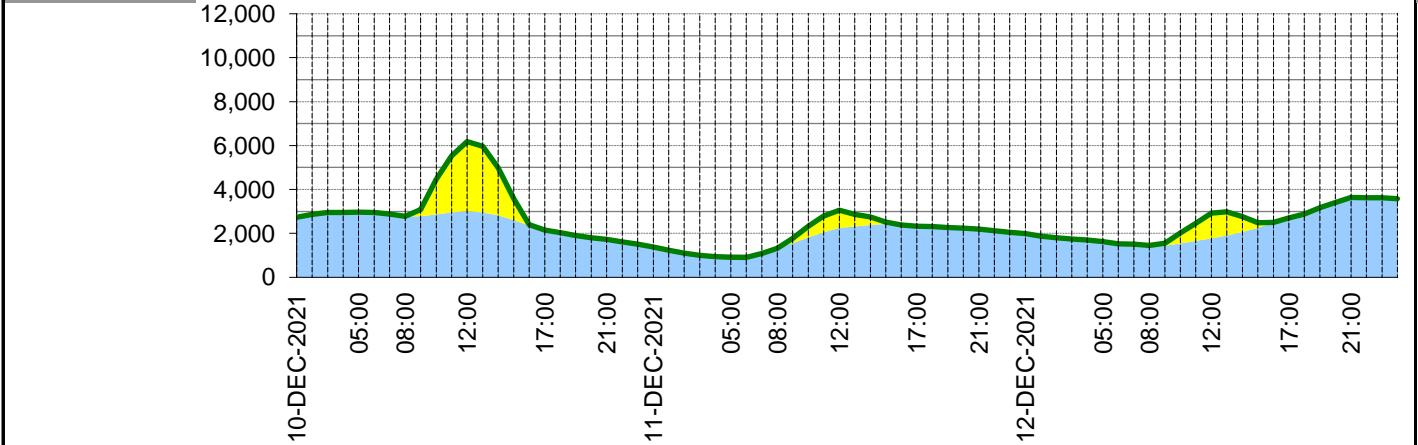
Yesterday's Market Summary	
<a href="#">Cash out price (Max)</a>	£370 /MWh (SP 33)
<a href="#">Cash Out Price (Min)</a>	£145 /MWh (SP 14)
<a href="#">Peak Demand Yesterday</a>	44223 MW

Interconnectors Net Transfer Capacity (MWs)			
Today	Import	Export	
Netherlands (BritNed)	1100	1133	Fully Available
France (IFA)	1000	1000	Partially Available
France (IFA2)	1014	1014	Fully Available
Belgium (Nemo)	1020	1020	Fully Available
Ireland (EWIC)	500	530	Fully Available
Northern Ireland (MOYLE)	500	500	Fully Available
NSL	700	700	Partially Available
ElecLink	0	0	Not Available

**Wind Power Forecast**



	10-DEC-2021					11-DEC-2021					12-DEC-2021						
	05:00	08:00	12:00	17:00	21:00	00:00	05:00	08:00	12:00	17:00	21:00	00:00	05:00	08:00	12:00	17:00	21:00
<b>Solar (MW)</b>	0	0	3170	0	0	0	0	0	802	0	0	0	0	0	1155	0	0
<b>Wind (MW)</b>	2967	2777	3007	2152	1729	1377	906	1314	2250	2328	2200	1997	1623	1446	1771	2702	3632
<b>STOR (MW)</b>	0	0	0	0	0	0	0	0	0	0	0	0	0	0	0	0	0
<b>Total (MW)</b>	2967	2777	6177	2152	1729	1377	906	1314	3052	2328	2200	1997	1623	1446	2926	2702	3632



Weather	Source	Commentary
Latest forecast (Summary)	<a href="#">Met Office</a> <a href="#">SEPA</a> <a href="#">Natural Resources Wales</a>	<p><b>Today:</b> After a bright, frosty start in the east, cloud and rain in the west will spread to most parts. Breezy, but turning milder than recently, especially in the south and west. Clearer, showery weather reaching the far northwest later.</p> <p><b>Tonight:</b> Staying mild and cloudy across England and Wales with some rain and drizzle, mainly in the west. Clearer further north and turning chilly, whilst showers affect the far northwest.</p>
General Weather Concerns e.g. wind, rain, snow, flooding, GB Weather Warnings	<a href="#">Met Office Weather Warnings</a> <a href="#">SEPA</a> <a href="#">Natural Resources Wales</a>	<p><b>UK Weather Warnings</b> None</p> <p><b>UK Flood Warnings:</b>            1 Flood Warning and 34 flood alerts in England            No flood alerts in Scotland            0 Flood Warnings and 6 flood alerts in Wales</p>

*Contains public sector information licensed under the Open Government Licence v1.0*

Further Information	
BM Reports	<a href="https://www.bmreports.com">https://www.bmreports.com</a>
System Balancing Reports	<a href="https://www.nationalgrideso.com/balancing-data/system-balancing-reports">https://www.nationalgrideso.com/balancing-data/system-balancing-reports</a>
Forecast Volumes and Costs	<a href="https://www.nationalgrideso.com/balancing-data/forecast-volumes-and-costs">https://www.nationalgrideso.com/balancing-data/forecast-volumes-and-costs</a>
NGESO Insights	<a href="https://www.nationalgrideso.com/insights">https://www.nationalgrideso.com/insights</a>