

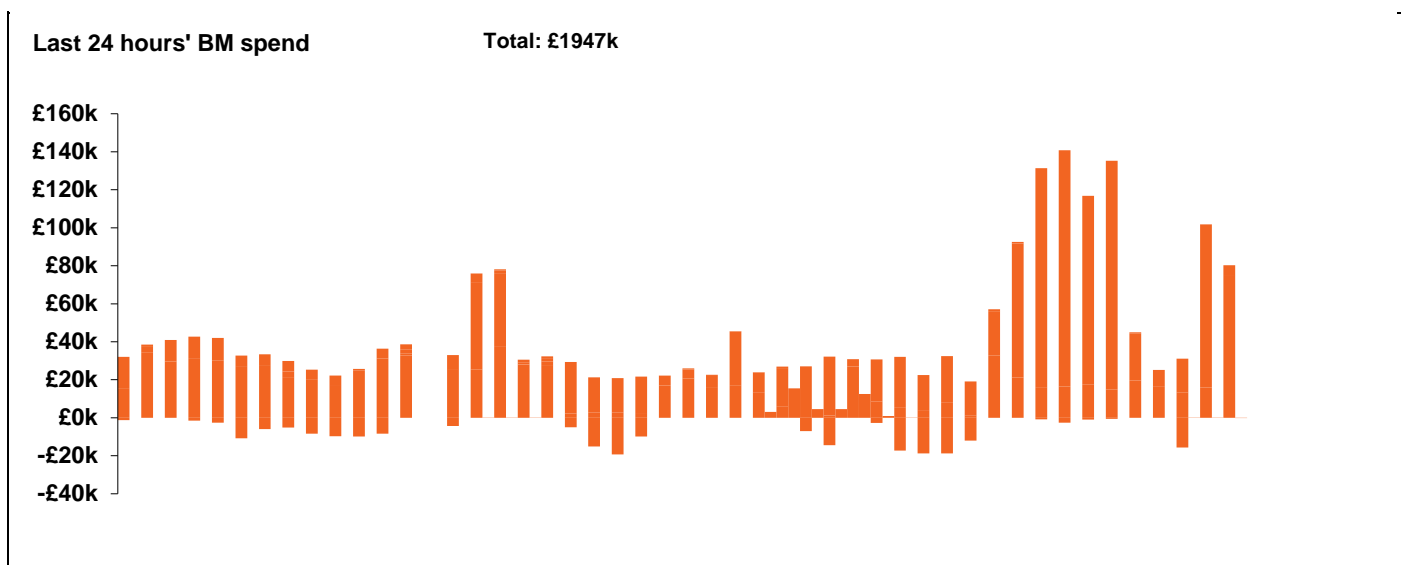
**National Electricity  
Transmission System Status Report**



**National Electricity Transmission System Status Report**  
Thursday 12 August 2021

Today's High Level Risk Status Forecast for the next 24h			
General Status		Voltage	
Demand		System Inertia	
System Margins		Weather	
Generation		Transmission	
Active Constraints			

<a href="#">Today's Minimum De-Rated Margin</a>	7551.37 (SP 18)	
<a href="#">System Warnings</a>	None	
Current BMU Largest Loss Risk	Generation	1260MW
	Demand	560MW

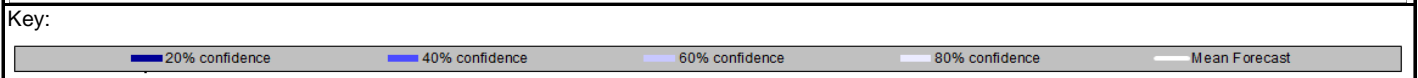
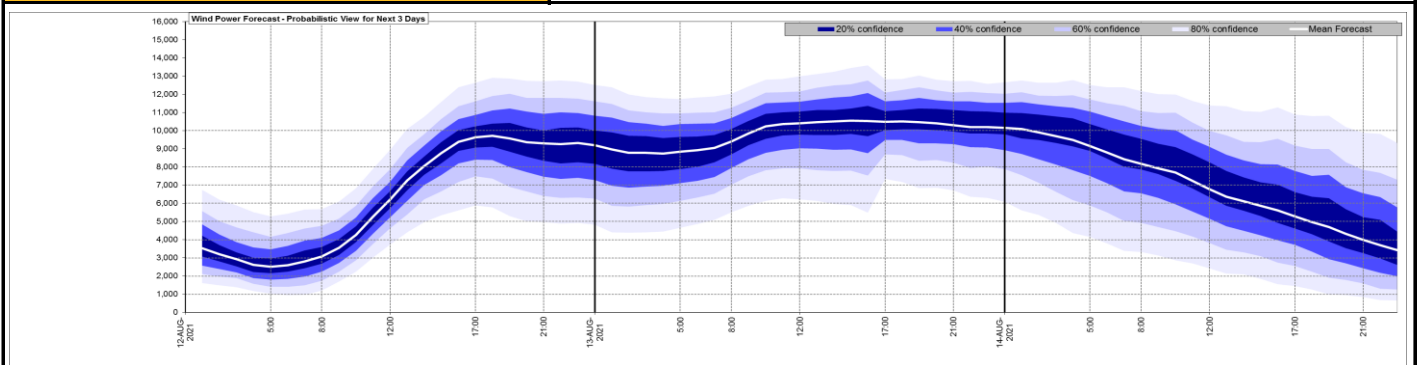


Yesterday's Market Summary	
<a href="#">Cash out price (Max)</a>	£148.50/MWh (SP 41)
<a href="#">Cash Out Price (Min)</a>	£52.50/MWh (SP 1)
<a href="#">Peak Demand Yesterday</a>	31,030MW

**Interconnectors**  
**Net Transfer Capacity (MWs)**

Today	Import	Export	
Netherlands (BritNed)	1100	1133	Fully Available
France (IFA)	2000	2000	Fully Available
France (IFA2)	1014	1014	Fully Available
Belgium (Nemo)	1020	1020	Fully Available
Ireland (EWIC)	500	530	Fully Available
Northern Ireland (MOYLE)	500	500	Fully Available

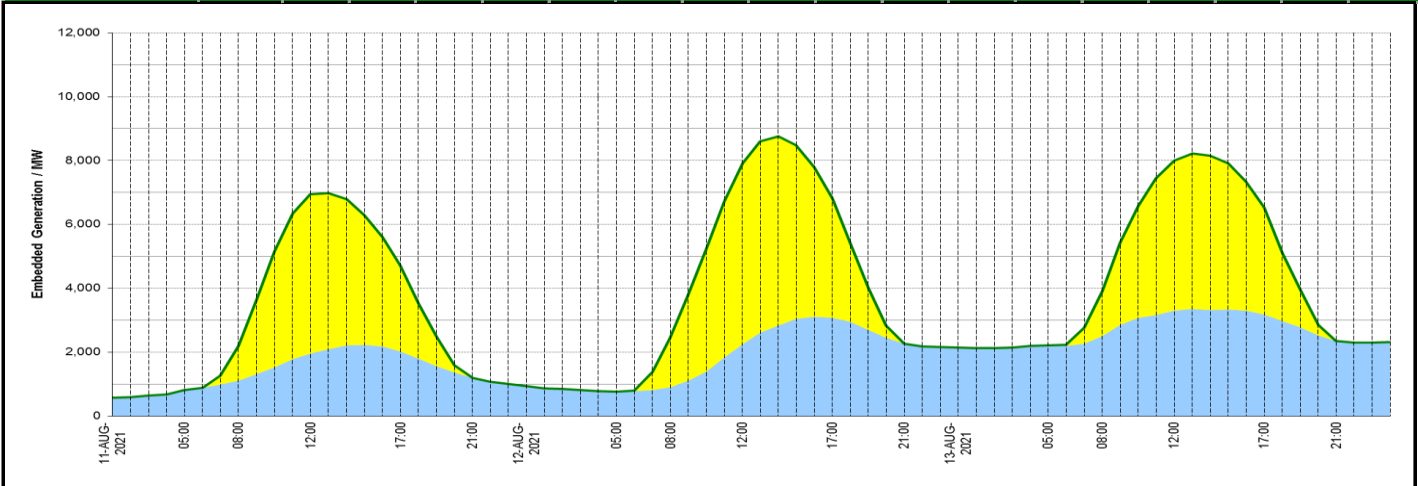
**Wind Power Forecast**



**Expected embedded generation (MWs)**

**Embedded Generation Forecast**

	11-AUG-2021					12-AUG-2021					13-AUG-2021						
	05:00	08:00	12:00	17:00	21:00	00:00	05:00	08:00	12:00	17:00	21:00	00:00	05:00	08:00	12:00	17:00	21:00
Solar (MW)	0	1100	4980	2700	4	0	0	1541	5656	3725	0	0	0	1426	4703	3345	0
Wind (MW)	806	1102	1957	2016	1189	935	770	908	2249	3081	2266	2135	2206	2500	3297	3178	2357
STOR (MW)	0	0	0	0	0	0	0	0	0	0	0	0	0	0	0	0	0
<b>Total (MW)</b>	<b>806</b>	<b>2202</b>	<b>6937</b>	<b>4716</b>	<b>1193</b>	<b>935</b>	<b>770</b>	<b>2449</b>	<b>7905</b>	<b>6806</b>	<b>2266</b>	<b>2135</b>	<b>2206</b>	<b>3926</b>	<b>8000</b>	<b>6523</b>	<b>2357</b>



Weather	Source	Commentary
Latest forecast (Summary)	<a href="#">Met Office</a> <a href="#">SEPA</a> <a href="#">Natural Resources Wales</a>	<p><b>Today:</b> Most parts starting dry with sunny intervals, some southeastern parts reasonably warm by afternoon. However a band of drizzly rain affects parts of southern England for a time, while northwestern parts of UK turning windier with increasingly frequent, heavy showers.</p> <p><b>Tonight:</b> Showers continuing in the northwest, albeit more restricted to coasts and hills as winds ease. Elsewhere a lot of dry weather with variable cloud, just isolated showers.</p>
General Weather Concerns e.g. wind, rain, snow, flooding, GB Weather Warnings	<a href="#">Met Office Weather</a> <a href="#">SEPA</a> <a href="#">Natural Resources Wales</a>	<p><b>None</b></p> <hr/> <p><b>Flood Warnings:</b> 0 Flood Warnings and 0 Flood Alerts issued for England.</p> <p>0 Flood Warnings and 0 Flood Alerts issued for Scotland.</p> <p>0 Flood Warnings and 0 Flood Alerts issued for Wales.</p>

*Contains public sector information licensed under the Open Government Licence v1.0*

Further Information	
BM Reports	<a href="https://www.bmreports.com">https://www.bmreports.com</a>
System Balancing Reports	<a href="https://www.nationalgrideso.com/balancing-data/system-balancing-reports">https://www.nationalgrideso.com/balancing-data/system-balancing-reports</a>
Forecast Volumes and Costs	<a href="https://www.nationalgrideso.com/balancing-data/forecast-volumes-and-costs">https://www.nationalgrideso.com/balancing-data/forecast-volumes-and-costs</a>
NGESO Insights	<a href="https://www.nationalgrideso.com/insights">https://www.nationalgrideso.com/insights</a>