

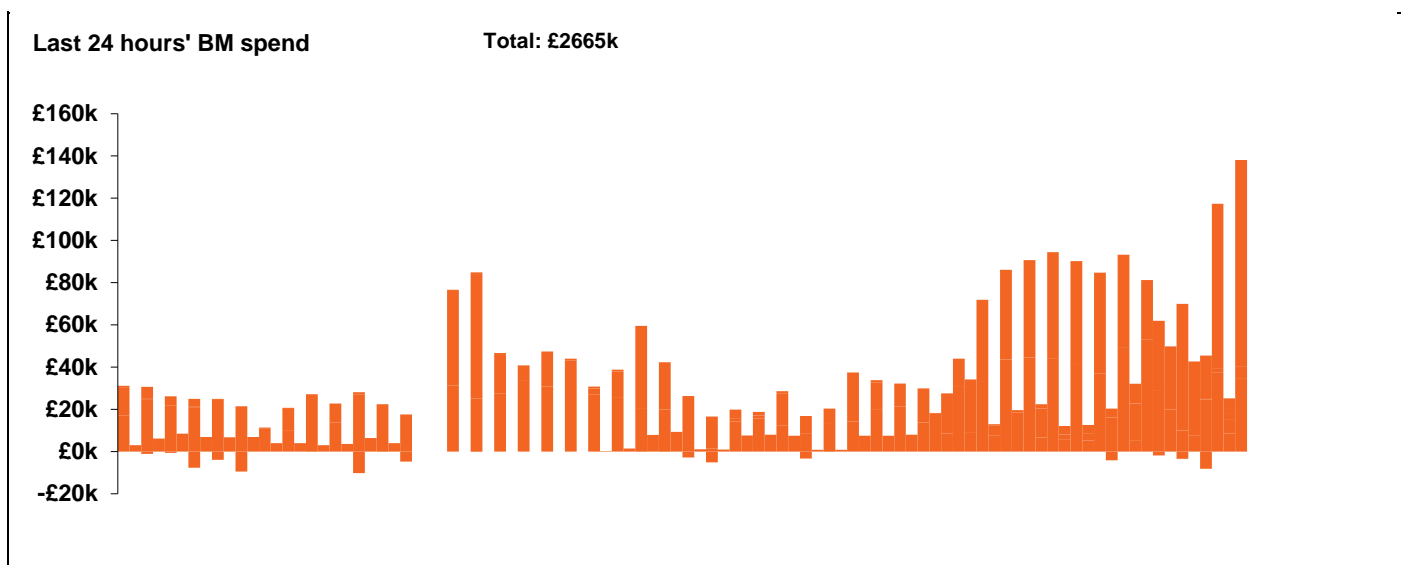
**National Electricity
Transmission System Status Report**



National Electricity Transmission System Status Report
Friday 25 June 2021

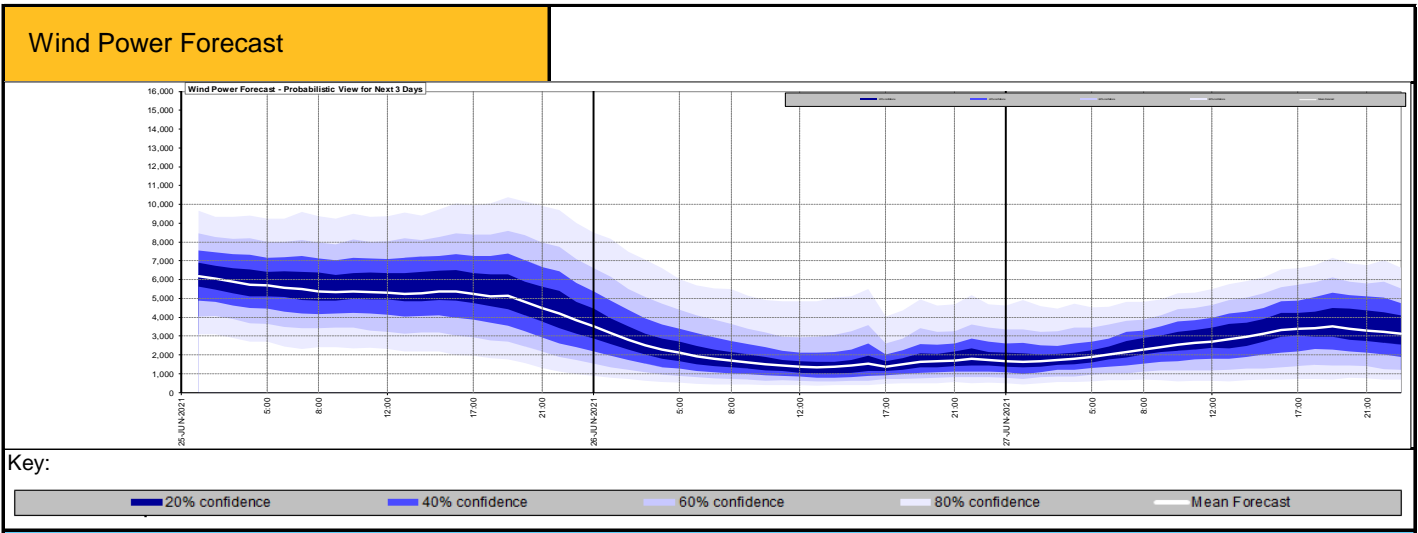
| Today's High Level Risk Status Forecast for the next 24h | | | |
|--|--|----------------|--|
| General Status | | Voltage | |
| Demand | | System Inertia | |
| System Margins | | Weather | |
| Generation | | Transmission | |
| Active Constraints | | | |

| | | |
|---|-----------------|--------|
| Today's Minimum De-Rated Margin | 7026.64 (SP 47) | |
| System Warnings | None | |
| Current BMU Largest Loss Risk | Generation | 1260MW |
| | Demand | 560MW |



| Yesterday's Market Summary | |
|---------------------------------------|---------------------|
| Cash out price (Max) | £119.99/MWh (SP 23) |
| Cash Out Price (Min) | £8.00/MWh (SP 46) |
| Peak Demand Yesterday | 31,786 MW |

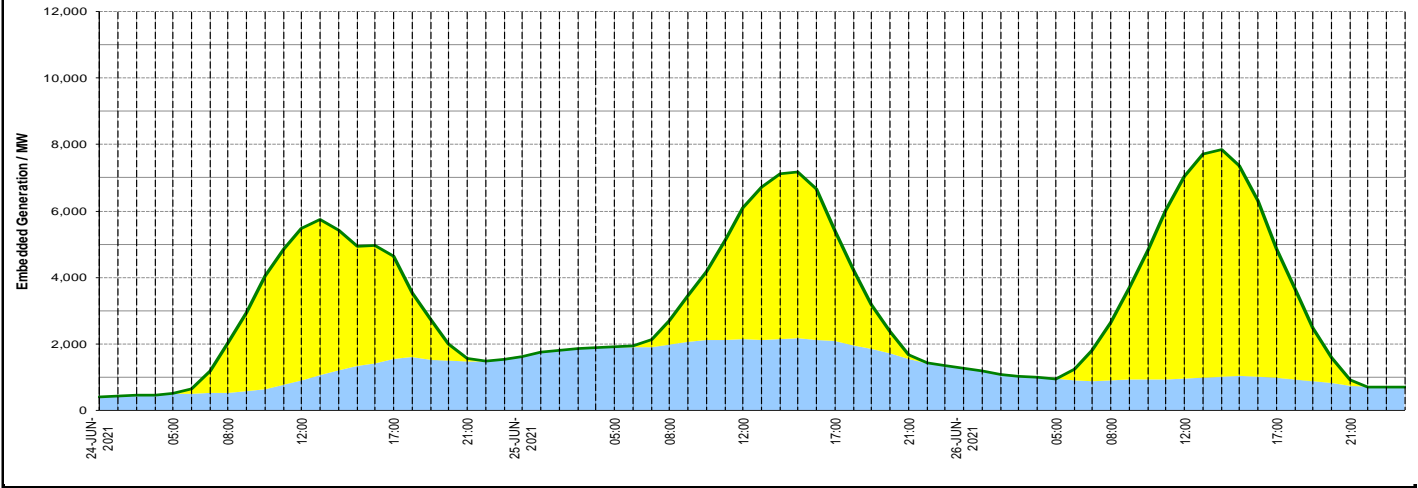
| Interconnectors Net Transfer Capacity (MWs) | | | |
|--|--------|--------|-----------------|
| Today | Import | Export | |
| Netherlands (BritNed) | 1100 | 1133 | Fully available |
| France (IFA) | 2000 | 2000 | Fully available |
| France (IFA2) | 1014 | 1014 | Fully Available |
| Belgium (Nemo) | 1020 | 1020 | Fully Available |
| Ireland (EWIC) | 500 | 530 | Fully Available |
| Northern Ireland (MOYLE) | 500 | 500 | Fully Available |



Expected embedded generation (MWs)

Embedded Generation Forecast

| | 24-JUN-2021 | | | | | 25-JUN-2021 | | | | | 26-JUN-2021 | | | | | | |
|-------------------|-------------|-------------|-------------|-------------|-------------|-------------|-------------|-------------|-------------|-------------|-------------|-------------|------------|-------------|-------------|-------------|------------|
| | 05:00 | 08:00 | 12:00 | 17:00 | 21:00 | 00:00 | 05:00 | 08:00 | 12:00 | 17:00 | 21:00 | 00:00 | 05:00 | 08:00 | 12:00 | 17:00 | 21:00 |
| Solar (MW) | 3 | 1500 | 4580 | 3110 | 76 | 0 | 0 | 695 | 3960 | 3332 | 126 | 0 | 0 | 1725 | 6078 | 3868 | 162 |
| Wind (MW) | 494 | 516 | 888 | 1540 | 1476 | 1616 | 1905 | 1988 | 2140 | 2075 | 1538 | 1257 | 942 | 906 | 959 | 979 | 751 |
| STOR (MW) | 0 | 0 | 0 | 0 | 0 | 0 | 0 | 0 | 0 | 0 | 0 | 0 | 0 | 0 | 0 | 0 | 0 |
| Total (MW) | 497 | 2016 | 5468 | 4650 | 1552 | 1616 | 1905 | 2683 | 6100 | 5407 | 1664 | 1257 | 942 | 2631 | 7037 | 4847 | 913 |



| Weather | Source | Commentary |
|---|---|---|
| Latest forecast (Summary) | Met Office SEPA Natural Resources Wales | <p>Today: Cool, cloudy and breezy with rain at times for much of Scotland and northern England. Further south, sunny spells developing but also some heavy showers and thunderstorms for parts of Wales, the Midlands, East Anglia and southeast England.</p> <p>Tonight: Early evening showers tending to fade, but a few persisting over the Midlands, Wales and southwest England overnight. Parts of Scotland and northern England staying cloudy with rain at times.</p> |
| General Weather Concerns e.g. wind, rain, snow, flooding, GB Weather Warnings | Met Office Weather SEPA Natural Resources Wales | <p>Weather Warnings: No weather warnings are in force for the UK</p> |
| | | <p>Flood Warnings: 1 x Flood Alert in England; 2 x Flood Alerts in Scotland</p> |

Contains public sector information licensed under the Open Government Licence v1.0

| Further Information | |
|----------------------------|---|
| BM Reports | https://www.bmreports.com |
| System Balancing Reports | https://www.nationalgrideso.com/balancing-data/system-balancing-reports |
| Forecast Volumes and Costs | https://www.nationalgrideso.com/balancing-data/forecast-volumes-and-costs |
| NGESO Insights | https://www.nationalgrideso.com/insights |