

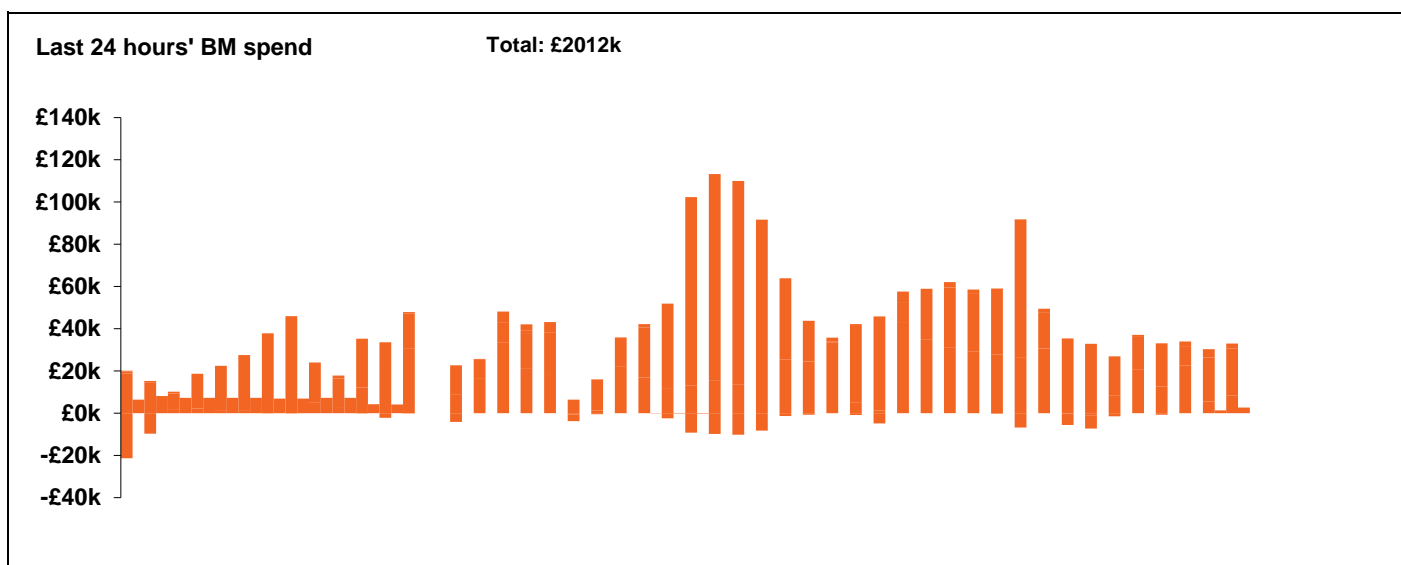
**National Electricity  
Transmission System Status Report**



**National Electricity Transmission System Status Report  
Saturday 19 June 2021**

Today's High Level Risk Status Forecast for the next 24h			
General Status		Voltage	
Demand		System Inertia	
System Margins		Weather	
Generation		Transmission	
Active Constraints			

<a href="#">Today's Minimum De-Rated Margin</a>	7093 (SP 36)	
<a href="#">System Warnings</a>	None	
Current BMU Largest Loss Risk	Generation	1260MW
	Demand	560MW

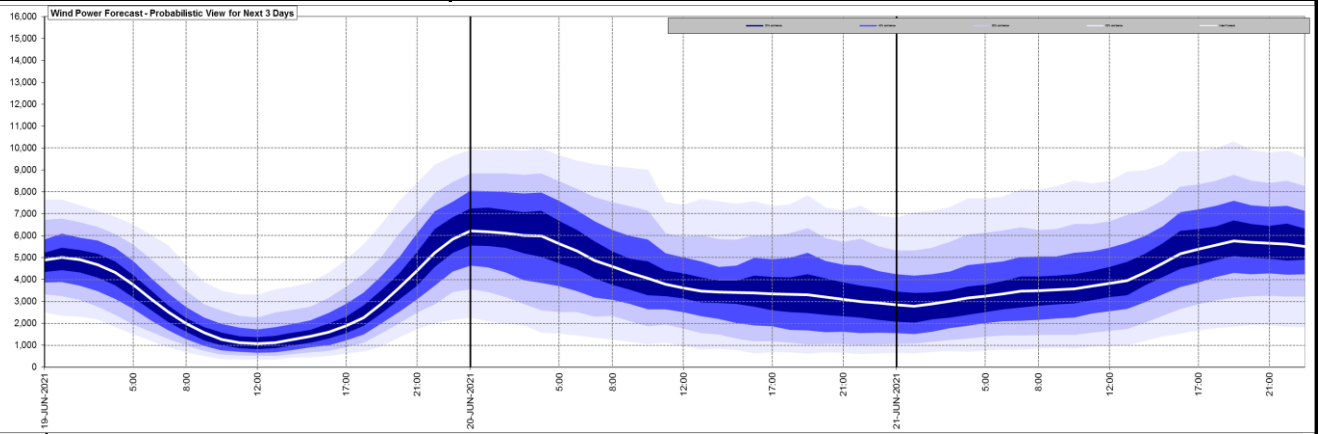


Yesterday's Market Summary	
<a href="#">Cash out price (Max)</a>	£138.00/MWh (SP 39)
<a href="#">Cash Out Price (Min)</a>	£16.30MWh (SP20)
<a href="#">Peak Demand Yesterday</a>	32,472 MW

**Interconnectors**  
**Net Transfer Capacity (MWs)**

Today	Import	Export	
Netherlands (BritNed)	1100	1133	Fully available
France (IFA)	2000	2000	Fully available
France (IFA2)	1014	1014	Fully Available
Belgium (Nemo)	1020	1020	Fully Available
Ireland (EWIC)	500	530	Fully Available
Northern Ireland (MOYLE)	395	500	Partially available

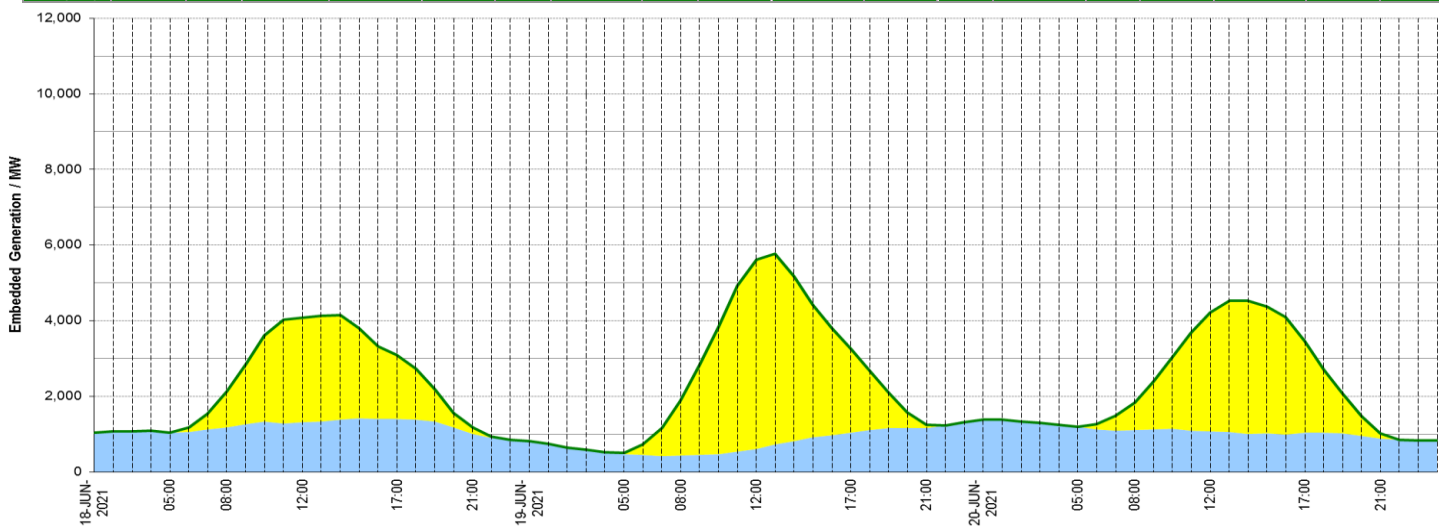
**Wind Power Forecast**



**Expected embedded generation (MWs)**

**Embedded Generation Forecast**

	18-JUN-2021					19-JUN-2021						20-JUN-2021					
	05:00	08:00	12:00	17:00	21:00	00:00	05:00	08:00	12:00	17:00	21:00	00:00	05:00	08:00	12:00	17:00	21:00
Solar (MW)	1	960	2770	1684	170	0	26	1456	4999	2200	83	0	0	723	3132	2412	128
Wind (MW)	1034	1173	1307	1404	999	805	475	428	610	1043	1161	1384	1188	1105	1075	1041	887
STOR (MW)	0	0	0	0	0	0	0	0	0	0	0	0	0	0	0	0	0
<b>Total (MW)</b>	<b>1035</b>	<b>2133</b>	<b>4077</b>	<b>3088</b>	<b>1169</b>	<b>805</b>	<b>501</b>	<b>1884</b>	<b>5609</b>	<b>3243</b>	<b>1244</b>	<b>1384</b>	<b>1188</b>	<b>1828</b>	<b>4207</b>	<b>3453</b>	<b>1015</b>



Weather	Source	Commentary
Latest forecast (Summary)	<a href="#">Met Office</a> <a href="#">SEPA</a> <a href="#">Natural Resources Wales</a>	<p><b>Today:</b>                      Low cloud slowly lifting and breaking to leave a mostly dry day with some sunny spells, though some showers affecting north-western parts. Outbreaks of rain reaching southern England later, some heavy with a risk of thunder.</p> <p><b>Tonight:</b>                      Rain or showers in the south, some heavy and thundery, moving northwards into central parts. Some drier spells, mainly in the north.</p>
General Weather Concerns e.g. wind, rain, snow, flooding, GB Weather Warnings	<a href="#">Met Office Weather</a> <a href="#">SEPA</a> <a href="#">Natural Resources Wales</a>	<p><b>Weather Warnings:</b>                      None</p> <p><b>Flood Warnings:</b>                      None</p>

*Contains public sector information licensed under the Open Government Licence v1.0*

Further Information	
BM Reports	<a href="https://www.bmreports.com">https://www.bmreports.com</a>
System Balancing Reports	<a href="https://www.nationalgrideso.com/balancing-data/system-balancing-reports">https://www.nationalgrideso.com/balancing-data/system-balancing-reports</a>
Forecast Volumes and Costs	<a href="https://www.nationalgrideso.com/balancing-data/forecast-volumes-and-costs">https://www.nationalgrideso.com/balancing-data/forecast-volumes-and-costs</a>
NGESO Insights	<a href="https://www.nationalgrideso.com/insights">https://www.nationalgrideso.com/insights</a>