

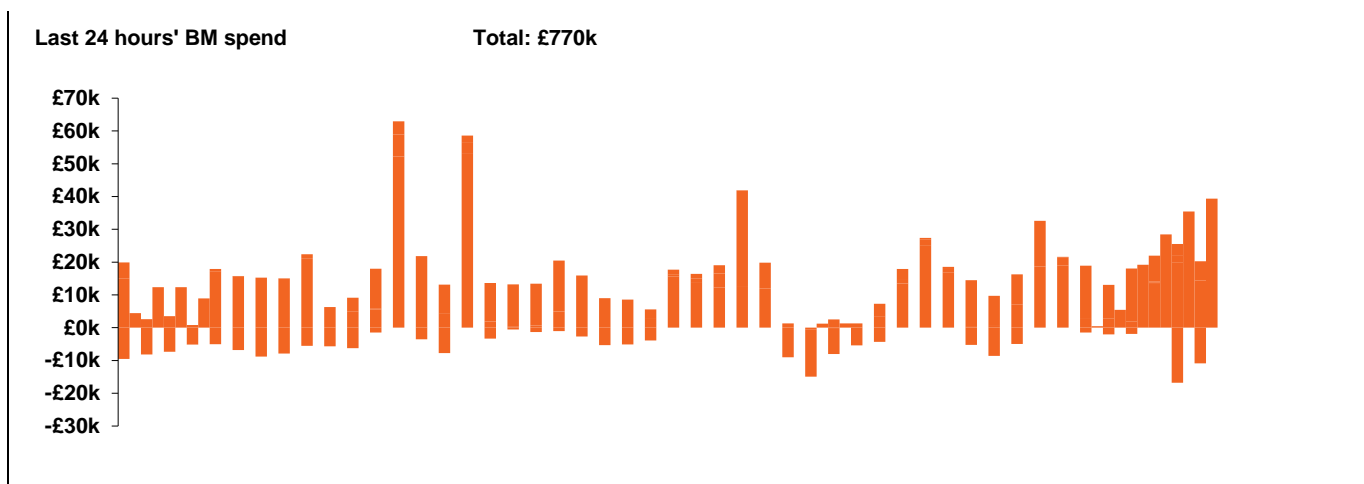
**National Electricity
Transmission System Status Report**



national**grid**ESO

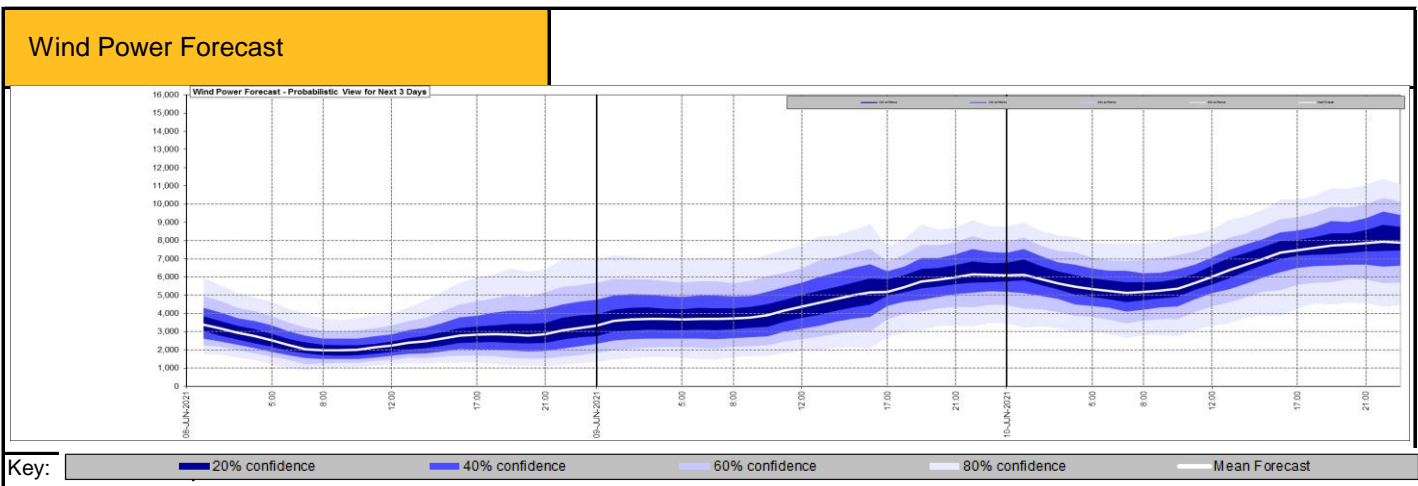
| Today's High Level Risk Status Forecast for the next 24h | | | |
|--|--|----------------|--|
| General Status | | Voltage | |
| Demand | | System Inertia | |
| System Margins | | Weather | |
| Generation | | Transmission | |
| Active Constraints | | | |

| | | |
|---|--------------|--------|
| Today's Minimum De-Rated Margin | 5593 (SP 40) | |
| System Warnings | None | |
| Current BMU Largest Loss Risk | Generation | 1260MW |
| | Demand | 560MW |



| Yesterday's Market Summary | |
|---------------------------------------|---------------------|
| Cash out price (Max) | £105.00/MWh (SP 41) |
| Cash Out Price (Min) | £18.00/MWh (SP 4) |
| Peak Demand Yesterday | 30688 MW |

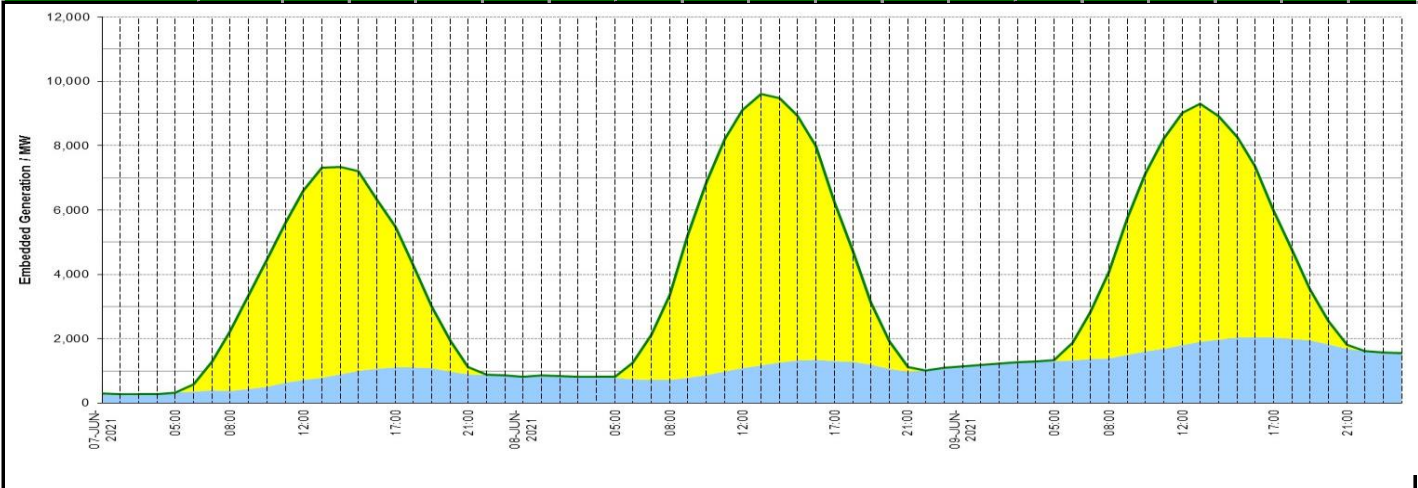
| Interconnectors Net Transfer Capacity (MWs) | | | |
|--|--------|--------|---------------------|
| Today | Import | Export | |
| Netherlands (BritNed) | 1100 | 1133 | Fully available |
| France (IFA) | 1500 | 1500 | Partially available |
| France (IFA2) | 1014 | 1014 | Fully Available |
| Belgium (Nemo) | 1020 | 1020 | Fully Available |
| Ireland (EWIC) | 500 | 530 | Fully Available |
| Northern Ireland (MOYLE) | 395 | 500 | Partially available |



Expected embedded generation (MWs)

Embedded Generation Forecast

| | 07-JUN-2021 | | | | | 08-JUN-2021 | | | | | 09-JUN-2021 | | | | | | |
|-------------------|-------------|-------------|-------------|-------------|-------------|-------------|------------|-------------|-------------|-------------|-------------|-------------|-------------|-------------|-------------|-------------|-------------|
| | 05:00 | 08:00 | 12:00 | 17:00 | 21:00 | 00:00 | 05:00 | 08:00 | 12:00 | 17:00 | 21:00 | 00:00 | 05:00 | 08:00 | 12:00 | 17:00 | 21:00 |
| Solar (MW) | 2 | 1850 | 5900 | 4360 | 215 | 0 | 22 | 2648 | 8025 | 4916 | 140 | 0 | 22 | 2688 | 7225 | 3939 | 117 |
| Wind (MW) | 327 | 379 | 714 | 1115 | 900 | 826 | 790 | 721 | 1084 | 1314 | 992 | 1150 | 1316 | 1391 | 1808 | 2032 | 1703 |
| STOR (MW) | 0 | 0 | 0 | 0 | 0 | 0 | 0 | 0 | 0 | 0 | 0 | 0 | 0 | 0 | 0 | 0 | 0 |
| Total (MW) | 329 | 2229 | 6614 | 5475 | 1115 | 826 | 812 | 3369 | 9109 | 6230 | 1132 | 1150 | 1338 | 4079 | 9033 | 5971 | 1820 |



| Weather | Source | Commentary |
|--|--|---|
| Latest forecast (Summary) | Met Office SEPA Natural Resources Wales | <p>Today: Most areas will be fine and dry with plenty of warm sunshine. Cloudier across Northern Ireland, North Wales, northwest England and western Scotland where cloud thick enough for a little rain at times.</p> <p>Tonight: Dry with clear periods for most areas. Cloudier in the west where cloud thick enough for some rain or drizzle, especially western Scotland where some heavier bursts of rain likely.</p> |
| General Weather Concerns e.g. wind, rain, snow, flooding, GB Weather Warnings | Met Office Weather Warnings SEPA Natural Resources Wales | <p>Weather Warning None</p> <p>UK Flood Warnings: 0 Flood Alert / Warnings</p> |

Contains public sector information licensed under the Open Government Licence v1.0

| Further Information | |
|----------------------------|---|
| BM Reports | https://www.bmreports.com |
| System Balancing Reports | https://www.nationalgrideso.com/balancing-data/system-balancing-reports |
| Forecast Volumes and Costs | https://www.nationalgrideso.com/balancing-data/forecast-volumes-and-costs |
| NGESO Insights | https://www.nationalgrideso.com/insights |