

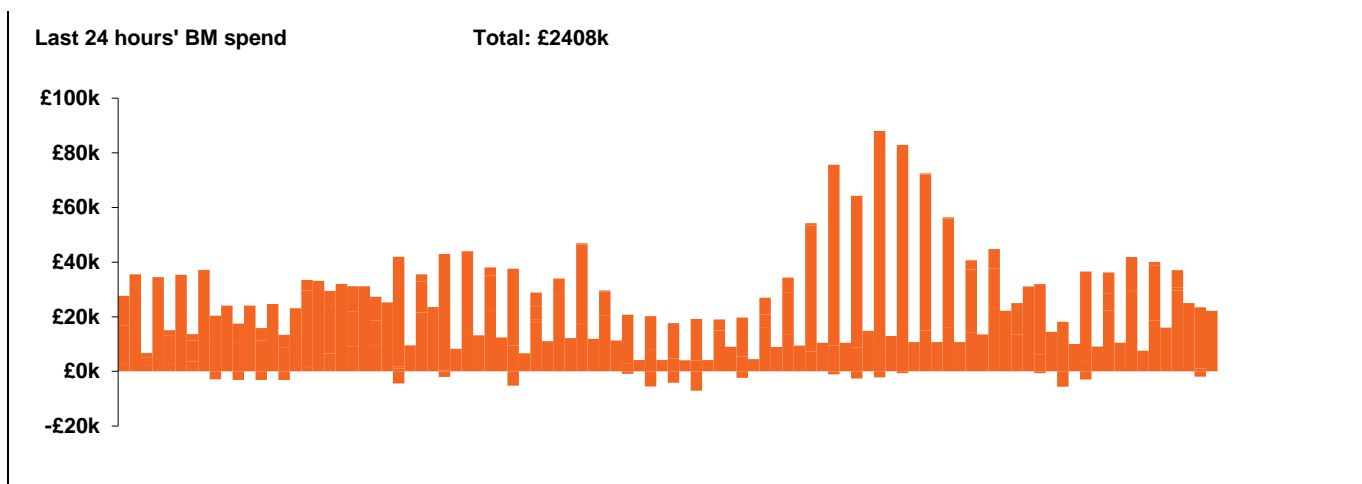
**National Electricity
Transmission System Status Report**



National Electricity Transmission System Status Report
Wednesday 28 April 2021

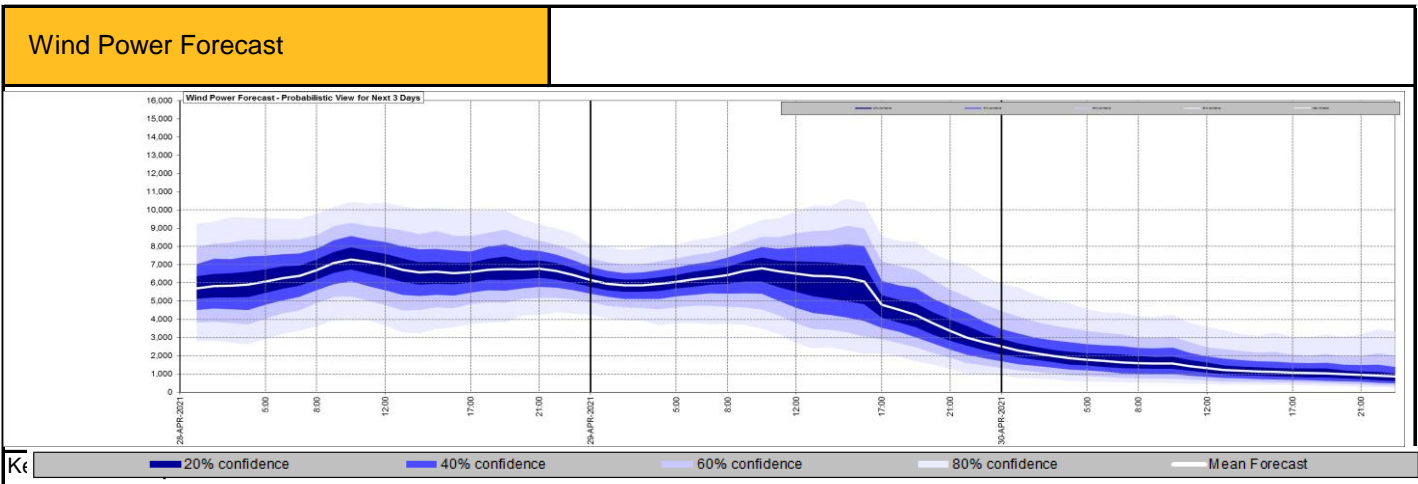
Today's High Level Risk Status Forecast for the next 24h			
General Status		Voltage	
Demand		System Inertia	
System Margins		Weather	
Generation		Transmission	
Active Constraints			

Today's Minimum De-Rated Margin	9828.75 (SP 38)	
System Warnings	None	
Current BMU Largest Loss Risk	Generation	825 MW overnight, 1260 MW daytime
	Demand	825 MW overnight, 560 MW daytime



Yesterday's Market Summary	
Cash out price (Max)	£102.00/MWh (SP 32)
Cash Out Price (Min)	£35.15/MWh (SP 13)
Peak Demand Yesterday	35,052 MW

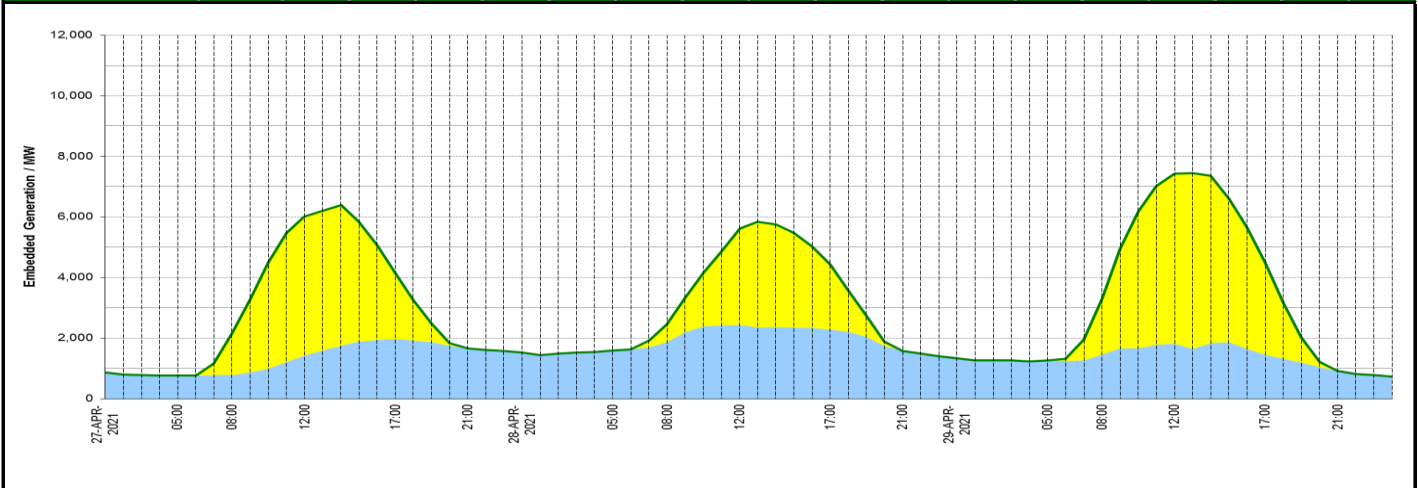
Interconnectors Net Transfer Capacity (MWs)			
Today	Import	Export	
Netherlands (BritNed)	0	0	Not available
France (IFA)	2000	2000	Fully available.
France (IFA2)	0	0	Not available
Belgium (Nemo)	1020	1020	Fully Available
Ireland (EWIC)	500	530	Fully Available
Northern Ireland (MOYLE)	395	500	Partially available.



Expected embedded generation (MWs)

Embedded Generation Forecast

	27-APR-2021					28-APR-2021					29-APR-2021						
	05:00	08:00	12:00	17:00	21:00	00:00	05:00	08:00	12:00	17:00	21:00	00:00	05:00	08:00	12:00	17:00	21:00
Solar (MW)	0	1380	4600	2190	1	0	0	580	3177	2125	0	0	0	1862	5613	3049	0
Wind (MW)	755	777	1410	1974	1656	1516	1585	1868	2439	2290	1580	1330	1255	1456	1810	1445	917
STOR (MW)	0	0	0	0	0	0	0	0	0	0	0	0	0	0	0	0	0
Total (MW)	755	2157	6010	4164	1657	1516	1585	2448	5616	4415	1580	1330	1255	3318	7423	4494	917



Weather	Source	Commentary
<p>Latest forecast (Summary)</p>	<p>Met Office SEPA Natural Resources Wales</p>	<p>Today: Areas of rain in parts of central, south, and southwest UK. Heavy at times particularly in the south. Showers feeding into northern parts but good shelter in the west. Breezy in the east and feeling chilly for most.</p> <p>Tonight: Rain in the south becoming focussed in the far southeast where some heavy bursts continuing. Showers persisting in northern and northeastern parts. Dry elsewhere and chilly, particularly in west.</p>
<p>General Weather Concerns e.g. wind, rain, snow, flooding, GB Weather Warnings</p>	<p>Met Office Weather Warnings SEPA Natural Resources Wales</p>	<p>No weather warnings are in force for the UK</p> <p>UK Flood Warnings: 16 Flood Warnings in England 4 Flood Warning in Wales</p>

Contains public sector information licensed under the Open Government Licence v1.0

Further Information	
BM Reports	https://www.bmreports.com
System Balancing Reports	https://www.nationalgrideso.com/balancing-data/system-balancing-reports
Forecast Volumes and Costs	https://www.nationalgrideso.com/balancing-data/forecast-volumes-and-costs
NGESO Insights	https://www.nationalgrideso.com/insights