

**National Electricity
Transmission System Status Report**

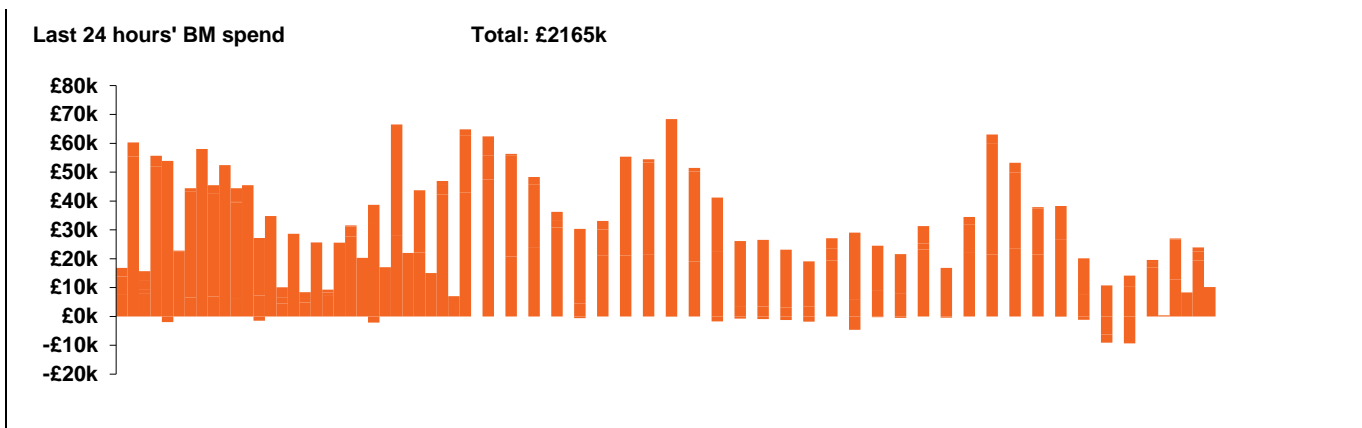


national**grid**ESO

National Electricity Transmission System Status Report
Saturday 10 April 2021

Today's High Level Risk Status Forecast for the next 24h			
General Status		Voltage	
Demand		System Inertia	
System Margins		Weather	
Generation		Transmission	
Active Constraints			

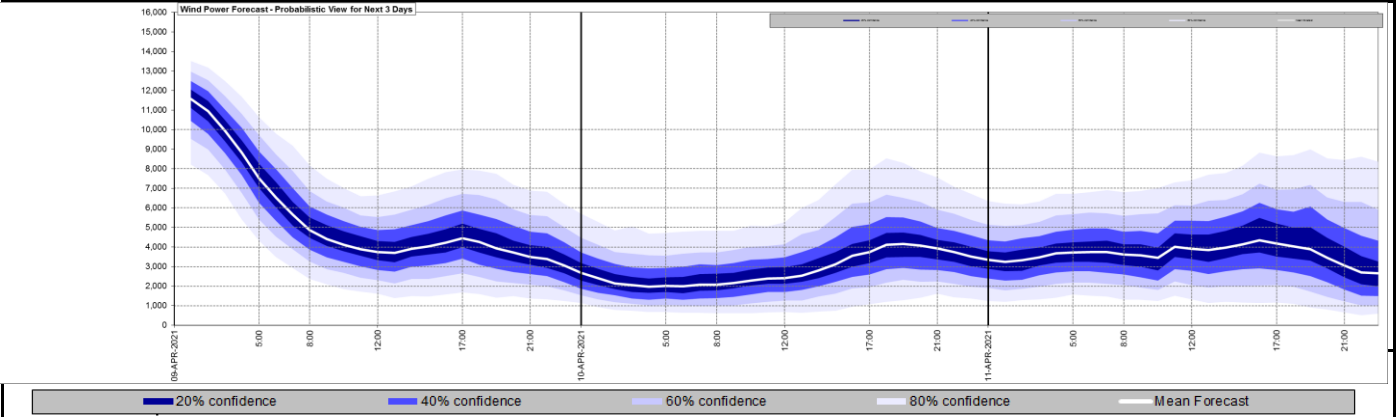
Today's Minimum De-Rated Margin	4670.45MW (SP 41)	
System Warnings	None	
Current BMU Largest Loss Risk	Generation	1260 MW
	Demand	560 MW



Yesterday's Market Summary	
Cash out price (Max)	£99.95 /MWh (SP 18)
Cash Out Price (Min)	£7.20 /MWh (SP 44)
Peak Demand Yesterday	35,161MW

Interconnectors			
Net Transfer Capacity (MWs)			
Today	Import	Export	
Netherlands (BritNed)	0	0	Unavailable
France (IFA)	2000	2000	Fully available
France (IFA2)	1014	1014	Fully available
Belgium (Nemo)	1020	1020	Fully available
Ireland (EWIC)	500	530	Fully available
Northern Ireland (MOYLE)	500	500	Fully available

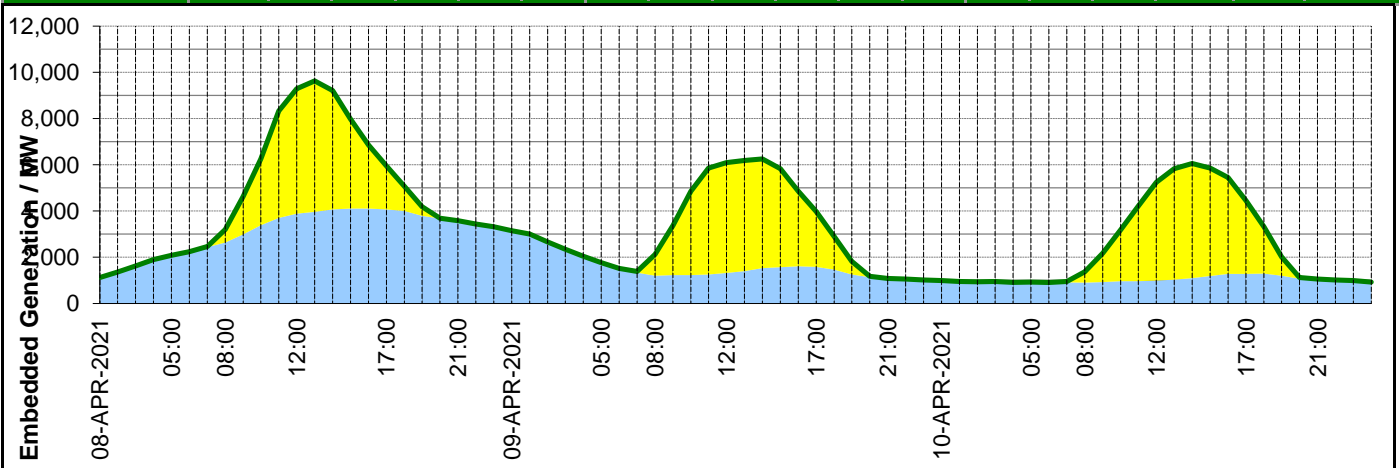
Wind Power Forecast



Expected embedded generation (MWs)

Embedded Generation Forecast

	08-APR-2021					09-APR-2021					10-APR-2021						
	05:00	08:00	12:00	17:00	21:00	00:00	05:00	08:00	12:00	17:00	21:00	00:00	05:00	08:00	12:00	17:00	21:00
Solar (MW)	0	562	5410	1880	0	0	0	920	4780	2390	0	0	0	463	4255	3180	0
Wind (MW)	2091	2636	3881	4077	3583	3149	1767	1209	1316	1589	1091	994	921	906	988	1276	1053
STOR (MW)	0	0	0	0	0	0	0	0	0	0	0	0	0	0	0	0	0
Total (MW)	2091	3198	9291	5957	3583	3149	1767	2129	6096	3979	1091	994	921	1369	5243	4456	1053



Weather	Source	Commentary
Latest forecast (Summary)	Met Office SEPA Natural Resources Wales	<p>Today: Parts of southern UK rather cloudy, with showery rain in places, perhaps heavy by afternoon, even sleety in places later. Brighter in parts of Wales and southwest England. Further north, sunny spells and showers of sleet, snow or hail. Cold.</p> <p>Tonight: Rain, sleet and perhaps some wet snow in some southern parts this evening, easing overnight. Scattered sleet or snow showers in northern areas but many inland areas clear and frosty.</p>
General Weather Concerns e.g. wind, rain, snow, flooding, GB Weather Warnings	Met Office Weather Warnings SEPA Natural Resources Wales	<p>NONE</p> <hr/> <p>UK Flood Warnings: NONE</p>

Contains public sector information licensed under the Open Government Licence v1.0

Further Information	
BM Reports	https://www.bmreports.com
System Balancing Reports	https://www.nationalgrideso.com/balancing-data/system-balancing-reports
Forecast Volumes and Costs	https://www.nationalgrideso.com/balancing-data/forecast-volumes-and-costs
NGESO Insights	https://www.nationalgrideso.com/insights