

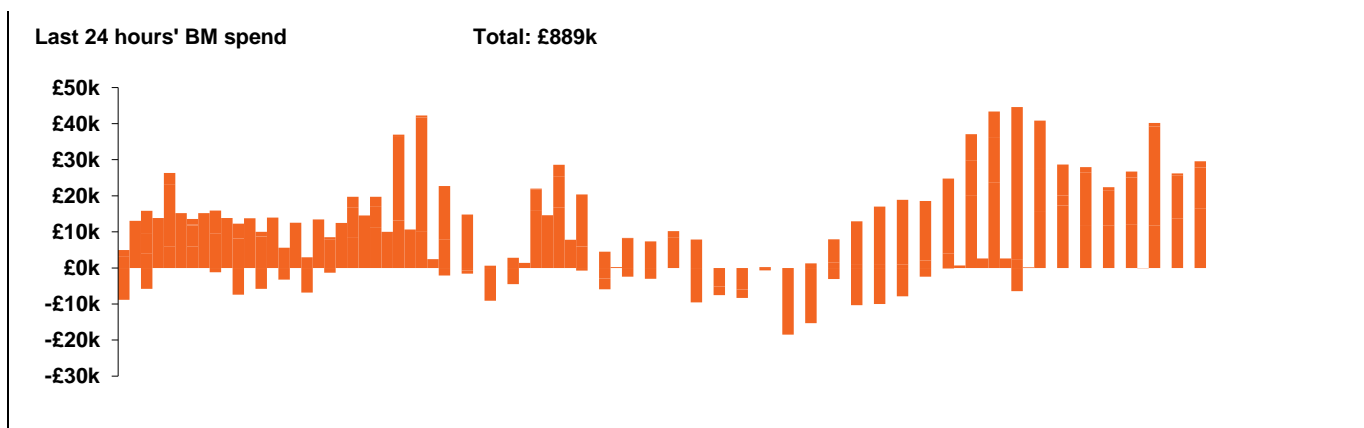
**National Electricity  
Transmission System Status Report**



**National Electricity Transmission System Status Report**  
Tuesday 23 March 2021

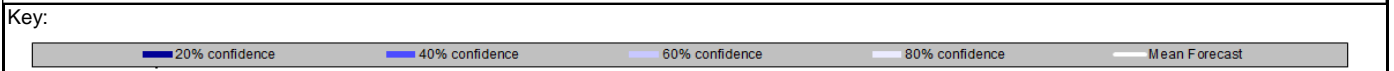
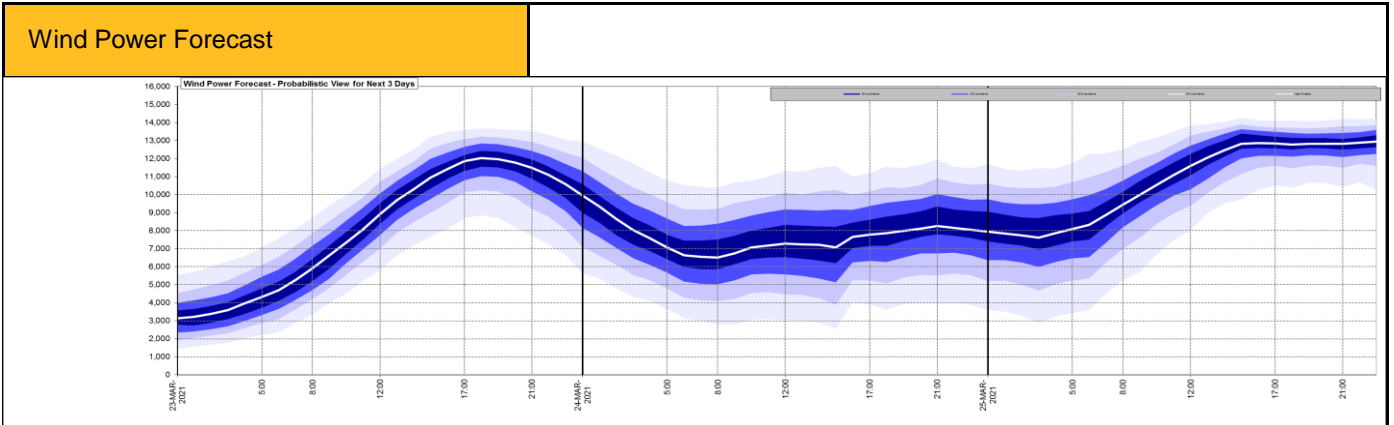
Today's High Level Risk Status Forecast for the next 24h			
General Status		Voltage	
Demand		System Inertia	
System Margins		Weather	
Generation		Transmission	
Active Constraints			

<a href="#">Today's Minimum De-Rated Margin</a>	11,709 MW (SP 38)	
<a href="#">System Warnings</a>	None	
Current BMU Largest Loss Risk	Generation	1260 MW
	Demand	560 MW



Yesterday's Market Summary	
<a href="#">Cash out price (Max)</a>	£110.00 /MWh (SP38&39)
<a href="#">Cash Out Price (Min)</a>	£0.00/MWh (SP17-18 & 30-31)
<a href="#">Peak Demand Yesterday</a>	39,600MW

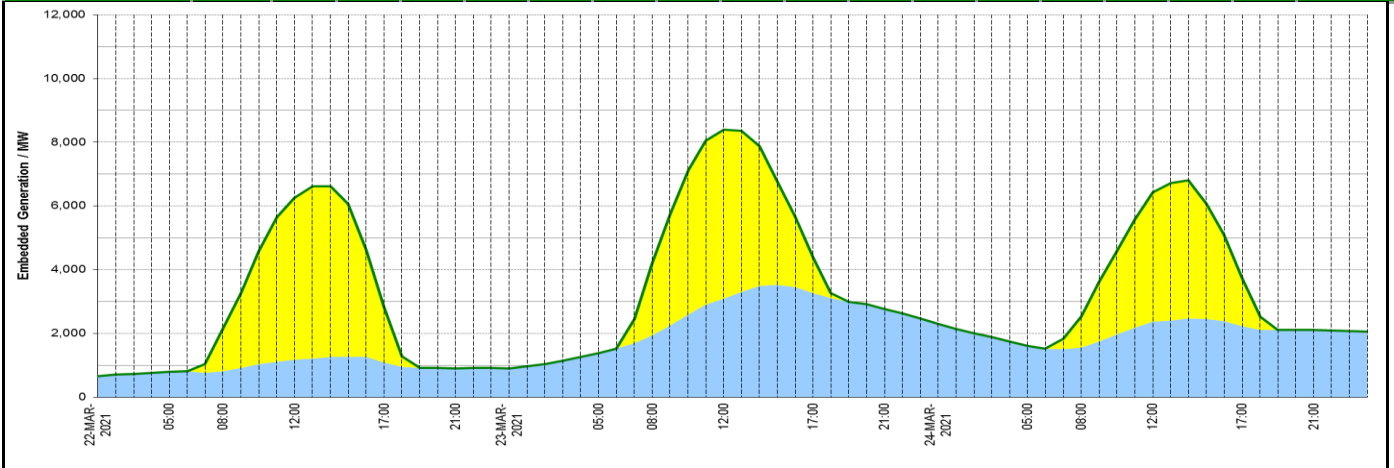
Interconnectors			
Net Transfer Capacity (MWs)			
Today	Import	Export	
Netherlands (BritNed)	0	0	Unavailable
France (IFA)	2000	2000	Fully available
France (IFA2)	1004	1004	Fully available
Belgium (Nemo)	1020	1020	Fully available
Ireland (EWIC)	500	530	Fully available
Northern Ireland (MOYLE)	500	500	Fully available



### Expected embedded generation (MWs)

#### Embedded Generation Forecast

	22-MAR-2021					23-MAR-2021					24-MAR-2021						
	05:00	08:00	12:00	17:00	21:00	00:00	05:00	08:00	12:00	17:00	21:00	00:00	05:00	08:00	12:00	17:00	21:00
<b>Solar (MW)</b>	0	1340	5090	1770	0	0	0	2240	5299	1095	0	0	0	986	4059	1501	0
<b>Wind (MW)</b>	788	818	1169	1087	906	894	1382	1934	3097	3273	2757	2307	1602	1549	2363	2236	2108
<b>STOR (MW)</b>	0	0	0	0	0	0	0	0	0	0	0	0	0	0	0	0	0
<b>Total (MW)</b>	<b>788</b>	<b>2158</b>	<b>6259</b>	<b>2857</b>	<b>906</b>	<b>894</b>	<b>1382</b>	<b>4174</b>	<b>8396</b>	<b>4368</b>	<b>2757</b>	<b>2307</b>	<b>1602</b>	<b>2535</b>	<b>6422</b>	<b>3737</b>	<b>2108</b>



Weather	Source	Commentary
Latest forecast (Summary)	<a href="#">Met Office</a> <a href="#">SEPA</a> <a href="#">Natural Resources Wales</a>	<p><b>Today:</b> Fine but cloudy for many with some drizzle on coasts and hills in the west. A cold start with a little fog in the south but some sunshine by day. Heavy rain and gales in the northwest later.</p> <p><b>Tonight:</b> Rain in the northwest, heavy on hills, moving gradually southwards. Mild for many in England but northern parts turning colder with showers arriving in the NW.</p>
General Weather Concerns e.g. wind, rain, snow, flooding, GB Weather Warnings	<a href="#">Met Office Weather Warnings</a> <a href="#">SEPA</a> <a href="#">Natural Resources Wales</a>	<p><b>No weather warnings in force for the UK</b></p> <p><b>UK Flood Warnings:</b>            0 Flood Warnings issued for England.            0 Flood Warnings issued for Scotland.            0 Flood Warnings issued for Wales.</p>

*Contains public sector information licensed under the Open Government Licence v1.0*

Further Information	
BM Reports	<a href="https://www.bmreports.com">https://www.bmreports.com</a>
System Balancing Reports	<a href="https://www.nationalgrideso.com/balancing-data/system-balancing-reports">https://www.nationalgrideso.com/balancing-data/system-balancing-reports</a>
Forecast Volumes and Costs	<a href="https://www.nationalgrideso.com/balancing-data/forecast-volumes-and-costs">https://www.nationalgrideso.com/balancing-data/forecast-volumes-and-costs</a>
NGESO Insights	<a href="https://www.nationalgrideso.com/insights">https://www.nationalgrideso.com/insights</a>