

**National Electricity
Transmission System Status Report**

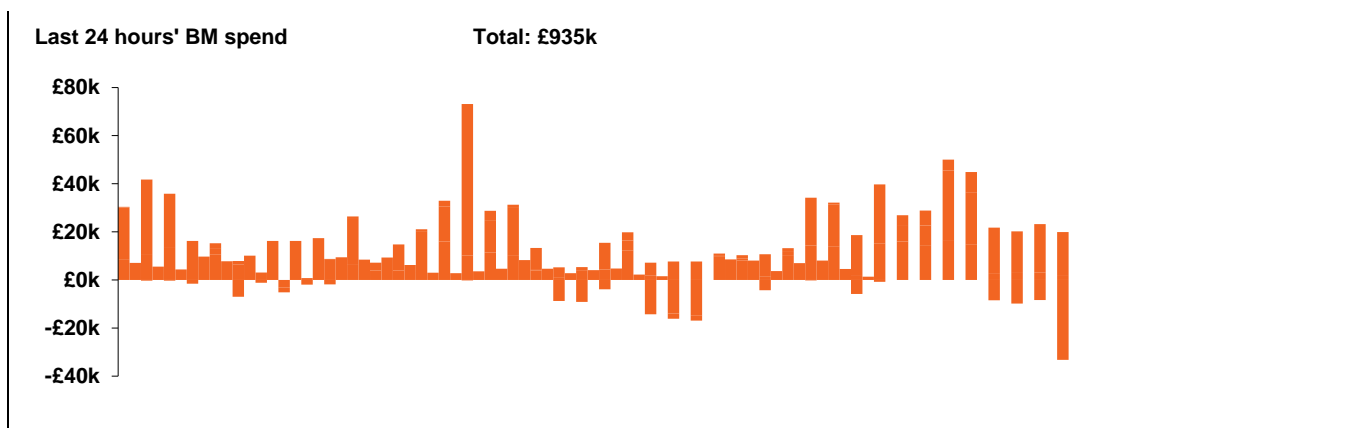


national**grid**ESO

National Electricity Transmission System Status Report
Friday 19 March 2021

Today's High Level Risk Status Forecast for the next 24h			
General Status		Voltage	
Demand		System Inertia	
System Margins		Weather	
Generation		Transmission	
Active Constraints			

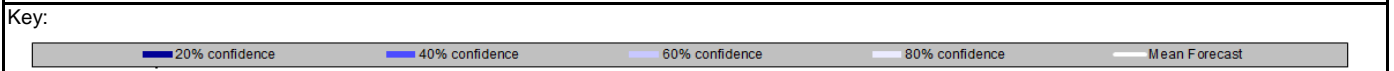
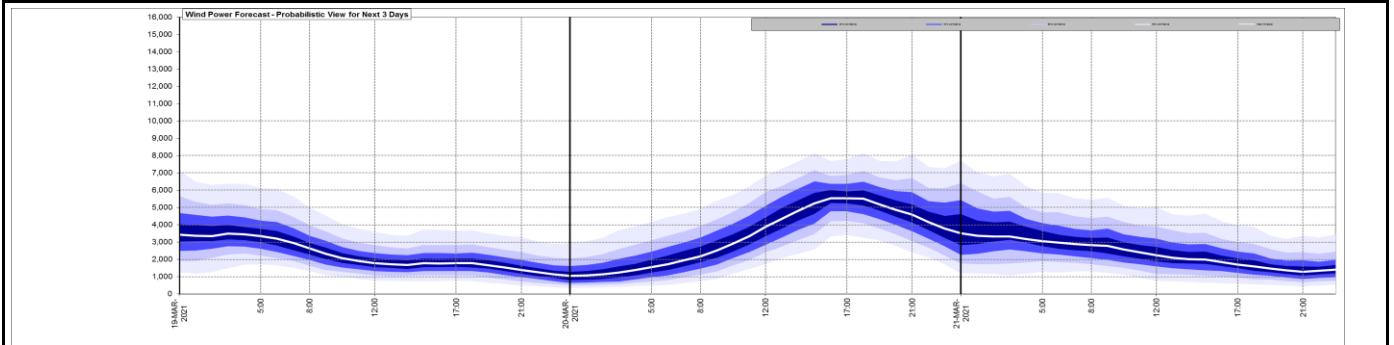
Today's Minimum De-Rated Margin	3087MW (SP 37)	
System Warnings	None	
Current BMU Largest Loss Risk	Generation	1260 MW
	Demand	560 MW



Yesterday's Market Summary	
Cash out price (Max)	£77.90 /MWh (SP 33, 35, 36, 38, 39)
Cash Out Price (Min)	£4.55 /MWh (SP 21, 22, 45)
Peak Demand Yesterday	36,835 MW

Interconnectors			
Net Transfer Capacity (MWs)			
Today	Import	Export	
Netherlands (BritNed)	0	0	Unavailable
France (IFA)	1500	1500	Partially available/Fully Available from 15:00
France (IFA2)	1004	1004	Fully available
Belgium (Nemo)	1020	1020	Fully available
Ireland (EWIC)	500	530	Fully available
Northern Ireland (MOYLE)	500	500	Fully available

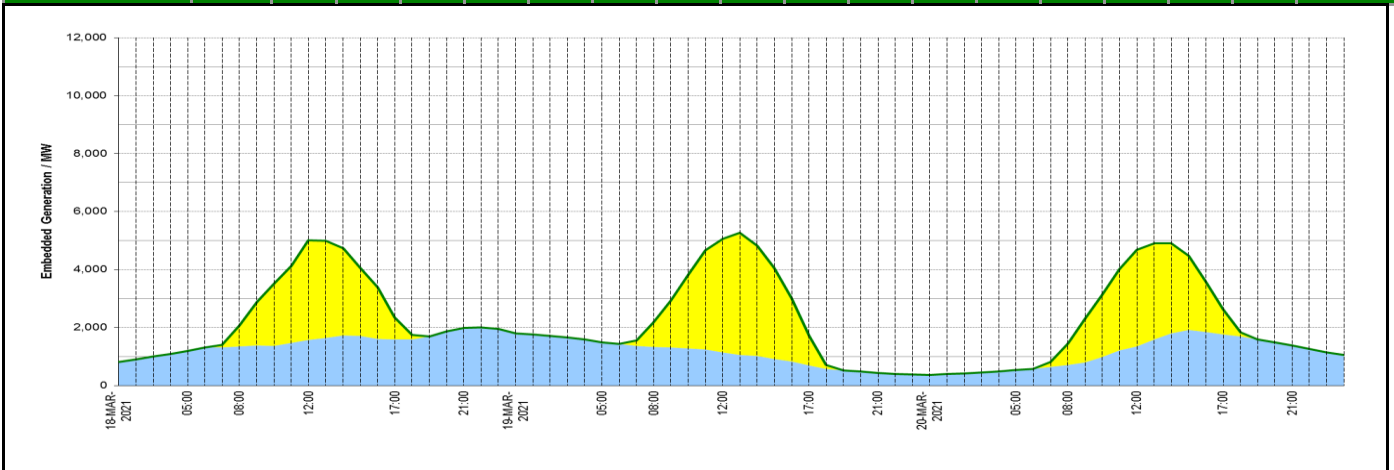
Wind Power Forecast



Expected embedded generation (MWs)

Embedded Generation Forecast

	18-MAR-2021					19-MAR-2021					20-MAR-2021						
	05:00	08:00	12:00	17:00	21:00	00:00	05:00	08:00	12:00	17:00	21:00	00:00	05:00	08:00	12:00	17:00	21:00
Solar (MW)	0	722	3440	762	0	0	0	850	3932	1011	0	0	0	737	3342	856	0
Wind (MW)	1195	1346	1572	1588	1984	1803	1491	1333	1136	700	438	369	532	713	1347	1766	1377
STOR (MW)	0	0	0	0	0	0	0	0	0	0	0	0	0	0	0	0	0
Total (MW)	1195	2068	5012	2350	1984	1803	1491	2183	5068	1711	438	369	532	1450	4689	2622	1377



Weather	Source	Commentary
<p>Latest forecast (Summary)</p>	<p>Met Office SEPA Natural Resources Wales</p>	<p>Today: Low cloud and patchy light rain across parts of England and east Wales, keeping it chilly. Some southeastern areas turning much brighter. Northern Britain seeing coastal low cloud and fog, but some inland areas fine and turning out fairly warm.</p> <p>Tonight: Clear spells for a while across parts of southeast England, leading to patchy frost. Clearer and chilly, too, in parts of Scotland. Elsewhere mostly cloudy, a little drizzle for some</p>
<p>General Weather Concerns e.g. wind, rain, snow, flooding, GB Weather Warnings</p>	<p>Met Office Weather Warnings SEPA Natural Resources Wales</p>	<p>No weather warnings in force</p> <hr/> <p>UK Flood Warnings: 0 Flood Warning issued for England. 0 Flood Warning issued for Scotland. 0 Flood Warnings issued for Wales.</p>

Contains public sector information licensed under the Open Government Licence v1.0

Further Information	
BM Reports	https://www.bmreports.com
System Balancing Reports	https://www.nationalgrideso.com/balancing-data/system-balancing-reports
Forecast Volumes and Costs	https://www.nationalgrideso.com/balancing-data/forecast-volumes-and-costs
NGESO Insights	https://www.nationalgrideso.com/insights