

**National Electricity
Transmission System Status Report**

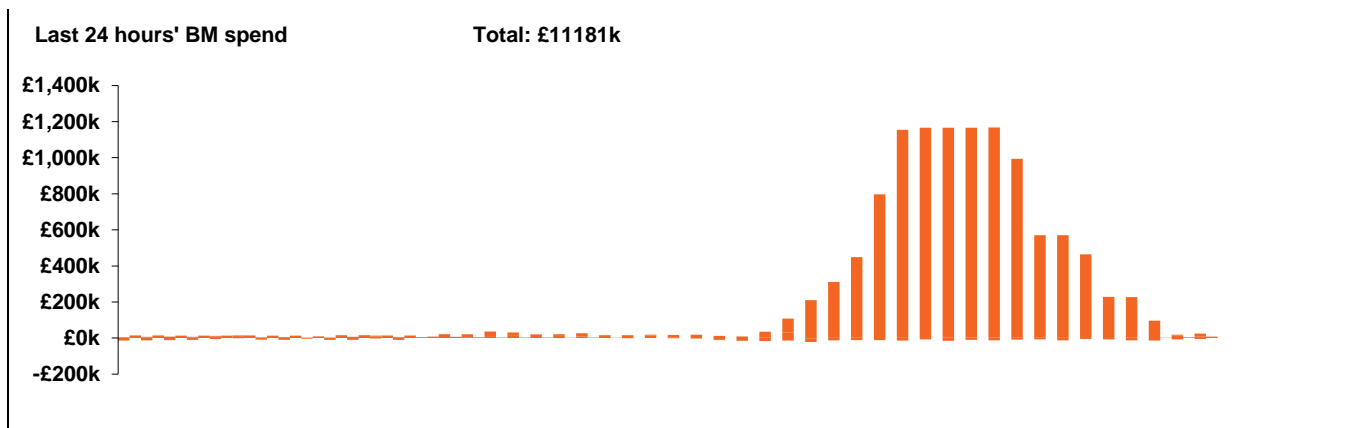


nationalgridESO

National Electricity Transmission System Status Report
Tuesday 16 March 2021

| Today's High Level Risk Status Forecast for the next 24h | | | |
|--|--|----------------|--|
| General Status | | Voltage | |
| Demand | | System Inertia | |
| System Margins | | Weather | |
| Generation | | Transmission | |
| Active Constraints | | | |

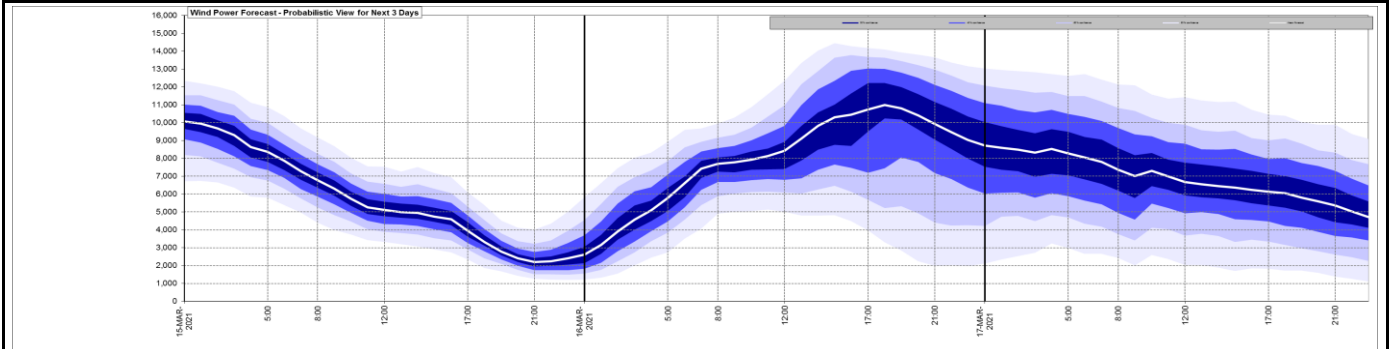
| | | |
|---|----------------|---------|
| Today's Minimum De-Rated Margin | 7837MW (SP 37) | |
| System Warnings | None | |
| Current BMU Largest Loss Risk | Generation | 1260 MW |
| | Demand | 560 MW |



| Yesterday's Market Summary | |
|---------------------------------------|-------------------------------------|
| Cash out price (Max) | £77.90 /MWh (SP 33, 35, 36, 38, 39) |
| Cash Out Price (Min) | £4.55 /MWh (SP 21, 22, 45) |
| Peak Demand Yesterday | 36,835 MW |

| Interconnectors | | | |
|-----------------------------|--------|--------|---------------------|
| Net Transfer Capacity (MWs) | | | |
| Today | Import | Export | |
| Netherlands (BritNed) | 0 | 0 | Unavailable |
| France (IFA) | 1500 | 1500 | Partially available |
| France (IFA2) | 1004 | 1004 | Fully available |
| Belgium (Nemo) | 1020 | 1020 | Fully available |
| Ireland (EWIC) | 500 | 530 | Fully available |
| Northern Ireland (MOYLE) | 500 | 500 | Fully available |

Wind Power Forecast



Key:

- 20% confidence
- 40% confidence
- 60% confidence
- 80% confidence
- Mean Forecast

Expected embedded generation (MWs)

Embedded Generation Forecast

| | 15-MAR-2021 | | | | | 16-MAR-2021 | | | | | 17-MAR-2021 | | | | | | |
|-------------------|-------------|-------|-------|-------|-------|-------------|-------|-------|-------|-------|-------------|-------|-------|-------|-------|-------|-------|
| | 05:00 | 08:00 | 12:00 | 17:00 | 21:00 | 00:00 | 05:00 | 08:00 | 12:00 | 17:00 | 21:00 | 00:00 | 05:00 | 08:00 | 12:00 | 17:00 | 21:00 |
| Solar (MW) | 0 | 931 | 4310 | 1070 | 0 | 0 | 0 | 504 | 3029 | 1235 | 0 | 0 | 0 | 1706 | 5446 | 1515 | 0 |
| Wind (MW) | 2092 | 1756 | 1740 | 967 | 541 | 754 | 1591 | 2262 | 3087 | 2568 | 2057 | 1832 | 1783 | 1776 | 2010 | 1612 | 1294 |
| STOR (MW) | 0 | 0 | 0 | 0 | 0 | 0 | 0 | 0 | 0 | 0 | 0 | 0 | 0 | 0 | 0 | 0 | 0 |
| Total (MW) | 2092 | 2687 | 6050 | 2037 | 541 | 754 | 1591 | 2766 | 6116 | 3803 | 2057 | 1832 | 1783 | 3482 | 7456 | 3127 | 1294 |

