

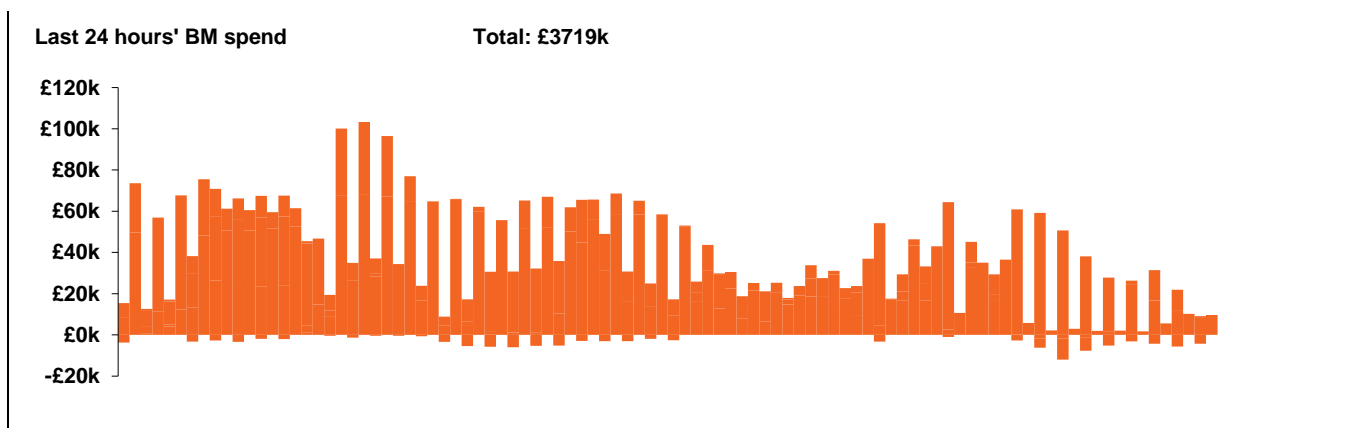
**National Electricity  
Transmission System Status Report**



**National Electricity Transmission System Status Report**  
Monday 15 March 2021

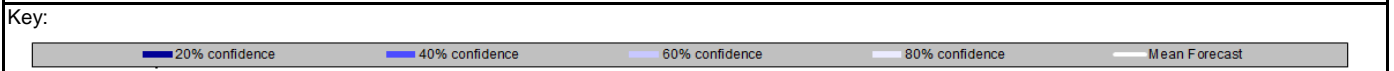
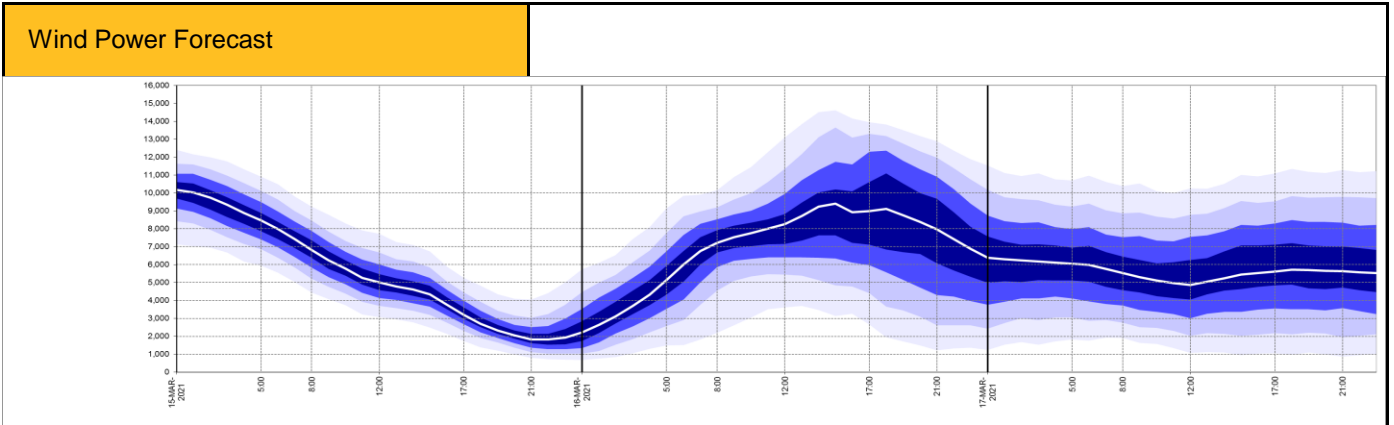
Today's High Level Risk Status Forecast for the next 24h			
General Status		Voltage	
Demand		System Inertia	
System Margins		Weather	
Generation		Transmission	
Active Constraints			

<a href="#">Today's Minimum De-Rated Margin</a>	972 MW SP 37	
<a href="#">System Warnings</a>	None	
Current BMU Largest Loss Risk	Generation	1260 MW
	Demand	560 MW



Yesterday's Market Summary	
<a href="#">Cash out price (Max)</a>	£77.90 /MWh (SP 33, 35, 36, 38, 39)
<a href="#">Cash Out Price (Min)</a>	£4.55 /MWh (SP 21, 22, 45)
<a href="#">Peak Demand Yesterday</a>	36,835 MW

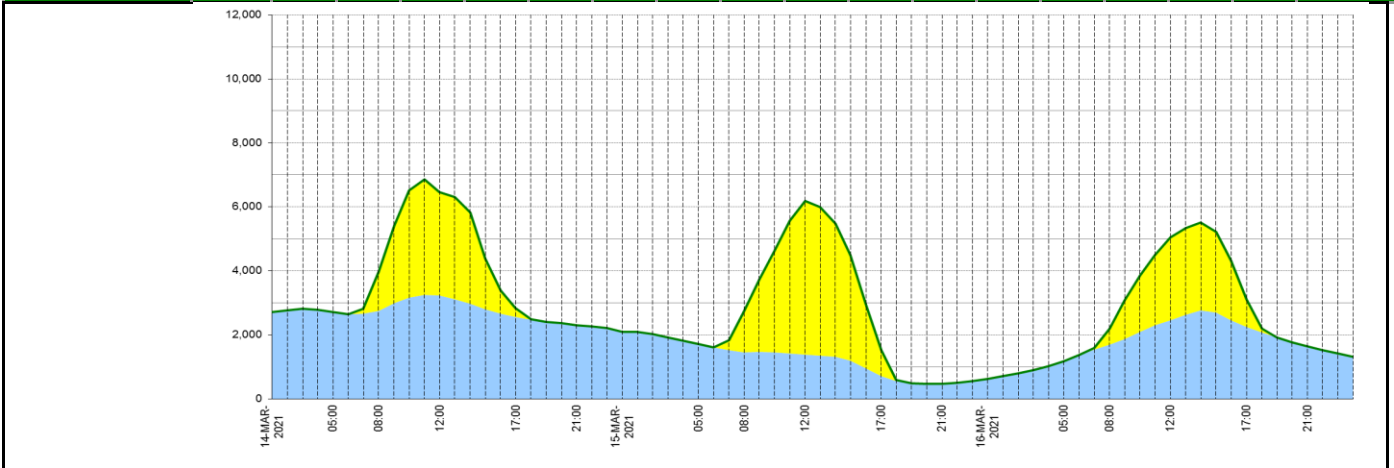
Interconnectors			
Net Transfer Capacity (MWs)			
Today	Import	Export	
Netherlands (BritNed)	0	0	Unavailable
France (IFA)	1500	1500	Partially available
France (IFA2)	1004	1004	Fully available
Belgium (Nemo)	1020	1020	Fully available
Ireland (EWIC)	500	530	Fully available
Northern Ireland (MOYLE)	500	500	Fully available



### Expected embedded generation (MWs)

#### Embedded Generation Forecast

	14-MAR-2021					15-MAR-2021					16-MAR-2021						
	05:00	08:00	12:00	17:00	21:00	00:00	05:00	08:00	12:00	17:00	21:00	00:00	05:00	08:00	12:00	17:00	21:00
<b>Solar (MW)</b>	0	1220	3220	265	0	0	0	1273	4807	814	0	0	0	500	2598	864	0
<b>Wind (MW)</b>	2706	2747	3234	2562	2306	2099	1703	1456	1382	708	467	621	1176	1691	2454	2253	1636
<b>STOR (MW)</b>	0	0	0	0	0	0	0	0	0	0	0	0	0	0	0	0	0
<b>Total (MW)</b>	<b>2706</b>	<b>3967</b>	<b>6454</b>	<b>2827</b>	<b>2306</b>	<b>2099</b>	<b>1703</b>	<b>2729</b>	<b>6189</b>	<b>1522</b>	<b>467</b>	<b>621</b>	<b>1176</b>	<b>2191</b>	<b>5052</b>	<b>3117</b>	<b>1636</b>



Weather	Source	Commentary
Latest forecast (Summary)	<a href="#">Met Office</a> <a href="#">SEPA</a> <a href="#">Natural Resources Wales</a>	<p><b>Today:</b> Many parts dry with broken cloud and sunny spells, though a few showers possible across southeast England. Outbreaks of rain and drizzle edging into western parts with low cloud and mist on coasts and hills.</p> <p><b>Tonight:</b> Tonight patchy rain, drizzle and low cloud spreading eastwards across most parts of the UK. Clearer skies reaching the far northwest later.</p>
General Weather Concerns e.g. wind, rain, snow, flooding, GB Weather Warnings	<a href="#">Met Office Weather Warnings</a> <a href="#">SEPA</a> <a href="#">Natural Resources Wales</a>	<p><b>No weather warnings in force</b></p>
		<p><b>UK Flood Warnings:</b> 2 Flood Warning issued for England. 0 Flood Warning issued for Scotland. 0 Flood Warnings issued for Wales.</p>

*Contains public sector information licensed under the Open Government Licence v1.0*

Further Information	
BM Reports	<a href="https://www.bmreports.com">https://www.bmreports.com</a>
System Balancing Reports	<a href="https://www.nationalgrideso.com/balancing-data/system-balancing-reports">https://www.nationalgrideso.com/balancing-data/system-balancing-reports</a>
Forecast Volumes and Costs	<a href="https://www.nationalgrideso.com/balancing-data/forecast-volumes-and-costs">https://www.nationalgrideso.com/balancing-data/forecast-volumes-and-costs</a>
NGESO Insights	<a href="https://www.nationalgrideso.com/insights">https://www.nationalgrideso.com/insights</a>