

**National Electricity
Transmission System Status Report**

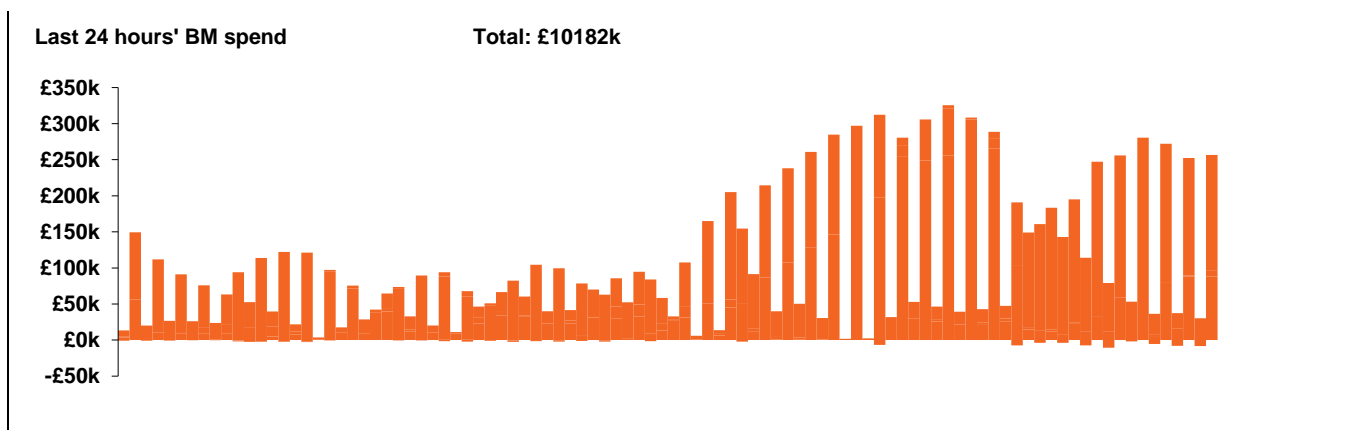


national**grid**ESO

National Electricity Transmission System Status Report
Sunday 21 February 2021

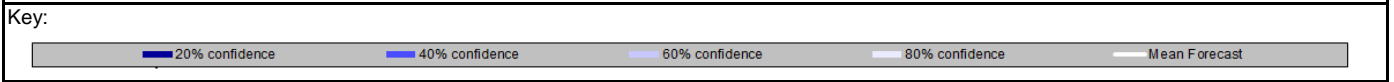
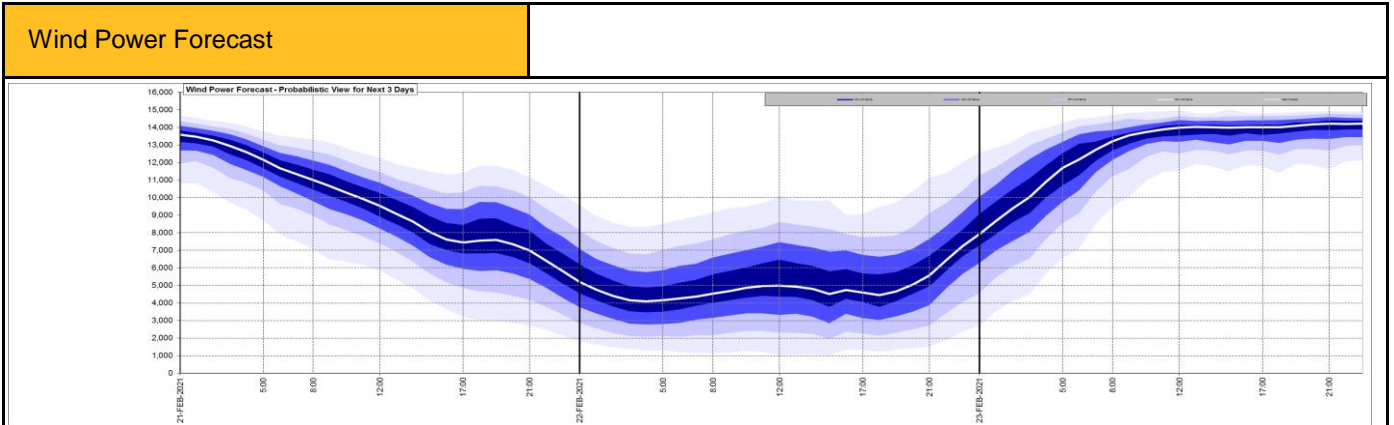
Today's High Level Risk Status Forecast for the next 24h			
General Status		Voltage	
Demand		System Inertia	
System Margins		Weather	
Generation		Transmission	
Active Constraints			

Today's Minimum De-Rated Margin	7130 (SP 36)	
System Warnings	None	
Current BMU Largest Loss Risk	Generation	1260 MW
	Demand	560 MW



Yesterday's Market Summary	
Cash out price (Max)	£82.00/MWh (SP 7)
Cash Out Price (Min)	£0.00/MWh (SP 29-33)
Peak Demand Yesterday	34063 MW

Interconnectors			
Net Transfer Capacity (MWs)			
Today	Import	Export	
Netherlands (BritNed)	1060	1060	Fully available
France (IFA)	2000	2000	Fully available
France (IFA2)	1004	1004	Fully available
Belgium (Nemo)	1020	1020	Fully available
Ireland (EWIC)	500	530	Fully available
Northern Ireland (MOYLE)	500	500	Fully available



Expected embedded generation (MWs)

Embedded Generation Forecast

	20-FEB-2021					21-FEB-2021					22-FEB-2021						
	05:00	08:00	12:00	17:00	21:00	00:00	05:00	08:00	12:00	17:00	21:00	00:00	05:00	08:00	12:00	17:00	21:00
Solar (MW)	0	80	2040	138	0	0	0	172	2380	118	0	0	0	212	2157	257	0
Wind (MW)	2352	2418	3130	3672	3413	2765	2262	2083	2122	1436	1228	991	815	872	1014	964	1257
STOR (MW)	0	0	0	0	0	0	0	0	0	0	0	0	0	0	0	0	0
Total (MW)	2352	2498	5170	3810	3413	2765	2262	2255	4502	1554	1228	991	815	1084	3171	1221	1257

