

**National Electricity
Transmission System Status Report**

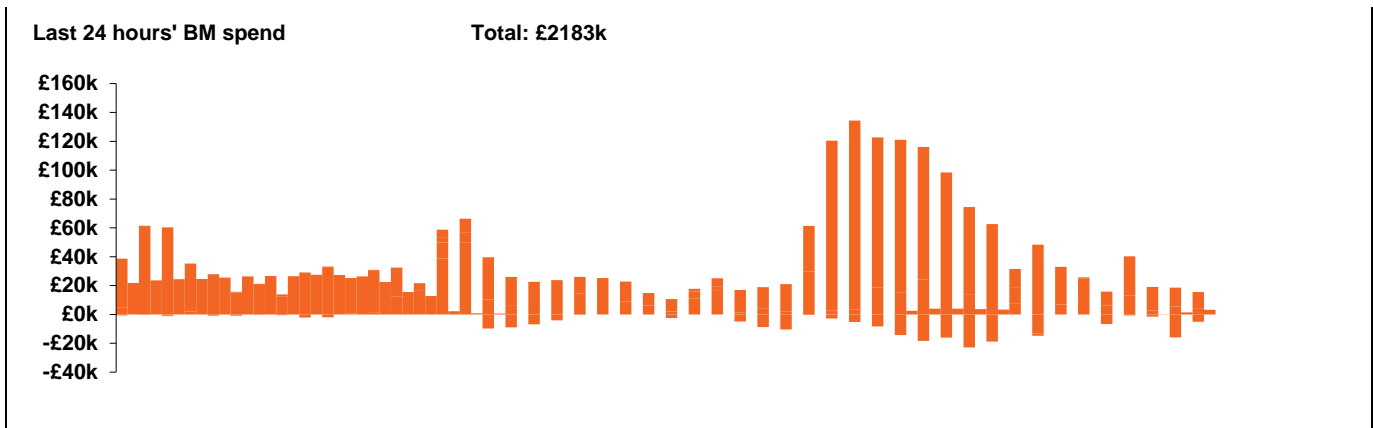


national**grid**ESO

National Electricity Transmission System Status Report
Thursday 31 December 2020

Today's High Level Risk Status Forecast for the next 24h			
General Status		Voltage	
Demand		System Inertia	
System Margins		Weather	
Generation		Transmission	
Active Constraints			

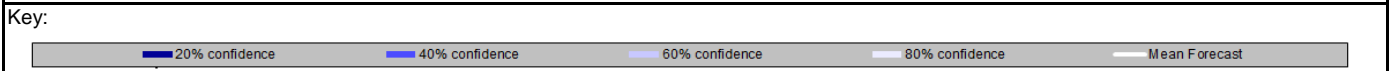
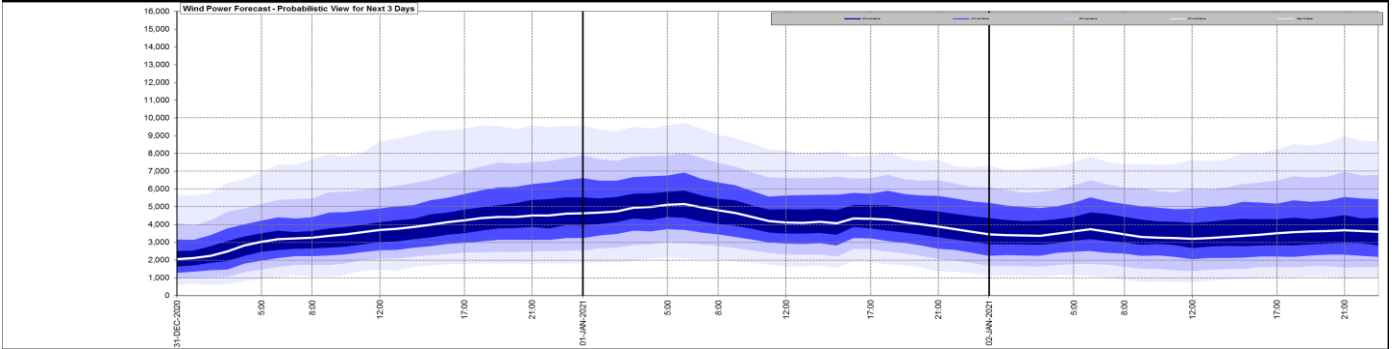
Today's Minimum De-Rated Margin	7860 (SP 36)	
System Warnings	None	
Current BMU Largest Loss Risk	Generation	1260 MW
	Demand	560 MW



Yesterday's Market Summary	
Cash out price (Max)	£238.35/MWh (SP 34-37)
Cash Out Price (Min)	£31.55/MWh (SP 17)
Peak Demand Yesterday	42,434 MW

Interconnectors			
Net Transfer Capacity (MWs)			
Today	Import	Export	
Netherlands (BritNed)	0	0	Not available
France (IFA)	2000	2000	Fully available
France (IFA2)	0	0	Commissioning
Belgium (Nemo)	1020	1020	Fully Available
Ireland (EWIC)	500	530	Fully Available
Northern Ireland (MOYLE)	500	500	Fully Available

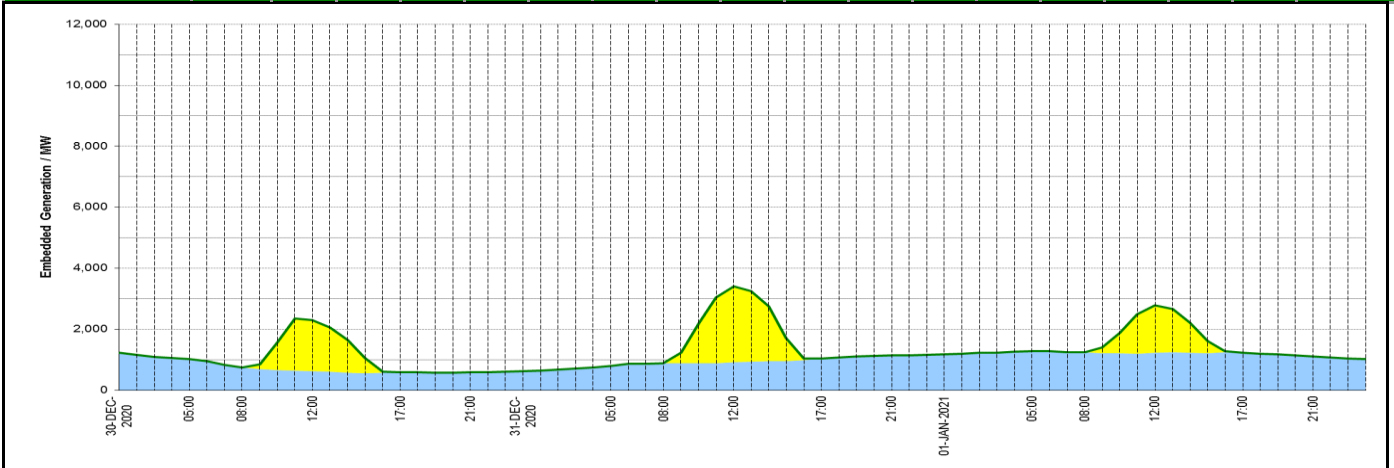
Wind Power Forecast



Expected embedded generation (MWs)

Embedded Generation Forecast

	30-DEC-2020					31-DEC-2020					01-JAN-2021						
	05:00	08:00	12:00	17:00	21:00	00:00	05:00	08:00	12:00	17:00	21:00	00:00	05:00	08:00	12:00	17:00	21:00
Solar (MW)	0	0	1680	0	0	0	0	0	2501	0	0	0	0	0	1556	0	0
Wind (MW)	1016	753	627	594	581	623	802	878	911	1032	1145	1176	1274	1247	1221	1224	1110
STOR (MW)	0	0	0	0	0	0	0	0	0	0	0	0	0	0	0	0	0
Total (MW)	1016	753	2307	594	581	623	802	878	3412	1032	1145	1176	1274	1247	2777	1224	1110



Weather	Source	Commentary
Latest forecast (Summary)	Met Office SEPA Natural Resources Wales	<p>Today: Rain, sleet and snow moving southwards across Scotland. Wintry showers for Northern Ireland, Wales and western England. Mostly dry in the south with sunny spells, though a few freezing fog patches may be reluctant to clear. Cold.</p> <p>Tonight: Rain, sleet and some snow moving southwards into northern England whilst showers follow across Scotland. Clear spells elsewhere allowing a sharp frost, with some freezing fog patches in the south.</p>
General Weather Concerns e.g. wind, rain, snow, flooding, GB Weather Warnings	Met Office Weather Warnings SEPA Natural Resources Wales	<p>Weather Warnings:</p> <p>Yellow warning of snow Areas affected: Grampian Highlands & Eilean Siar Northern Ireland Strathclyde</p> <p>Yellow warning of ice Areas affected: Grampian Highlands & Eilean Siar Northern Ireland Strathclyde</p> <p>Yellow warning of snow Central, Tayside & Fife East Midlands Grampian Highlands & Eilean Siar North East England North West England SW Scotland, Lothian Borders Strathclyde Wales West Midlands Yorkshire & Humber</p> <p>Yellow warning of ice Central, Tayside & Fife East Midlands Grampian Highlands & Eilean Siar North East England North West England SW Scotland, Lothian Borders Strathclyde Wales West Midlands Yorkshire & Humber London & South East England South West England</p> <p>UK Flood Warnings:</p> <p>31 Flood Warnings issued for England</p> <p>0 Flood Warnings issued for Scotland</p> <p>0 Flood Warnings issued for Wales</p>

Contains public sector information licensed under the Open Government Licence v1.0

Further Information	
BM Reports	https://www.bmreports.com
System Balancing Reports	https://www.nationalgrideso.com/balancing-data/system-balancing-reports
Forecast Volumes and Costs	https://www.nationalgrideso.com/balancing-data/forecast-volumes-and-costs
NGESO Insights	https://www.nationalgrideso.com/insights