

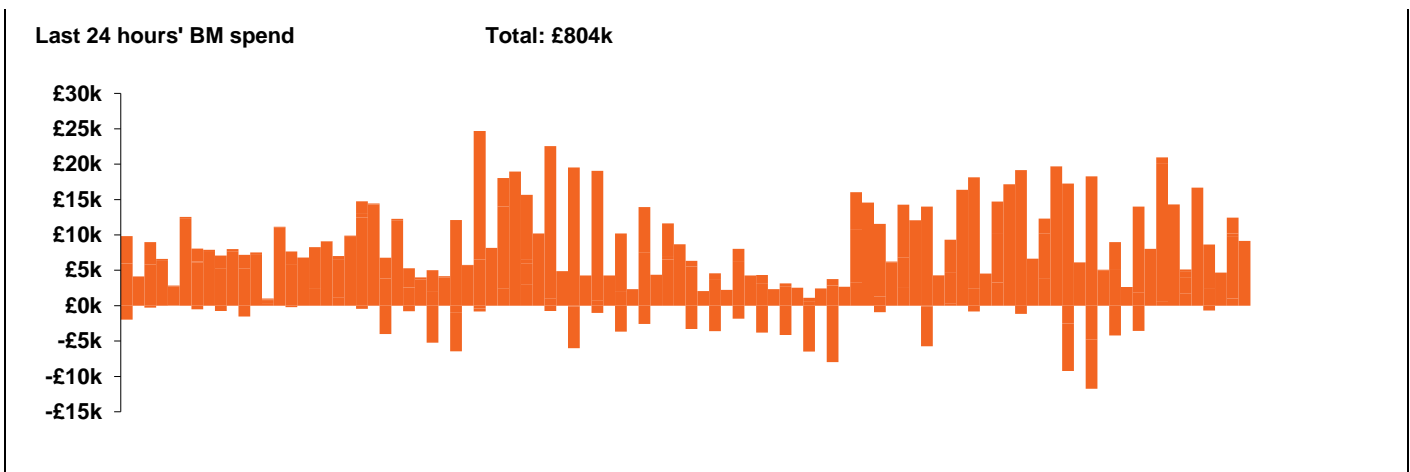
**National Electricity  
Transmission System Status Report**



**National Electricity Transmission System Status Report**  
Tuesday 22 September 2020

Today's High Level Risk Status Forecast for the next 24h			
General Status		Voltage	
Demand		System Inertia	
System Margins		Weather	
Generation		Transmission	
Active Constraints			

<a href="#">Today's Minimum De-Rated Margin</a>	11271 (SP 42)	
<a href="#">System Warnings</a>	None	
Current BMU Largest Loss Risk	Generation	1000 MW
	Demand	560 MW

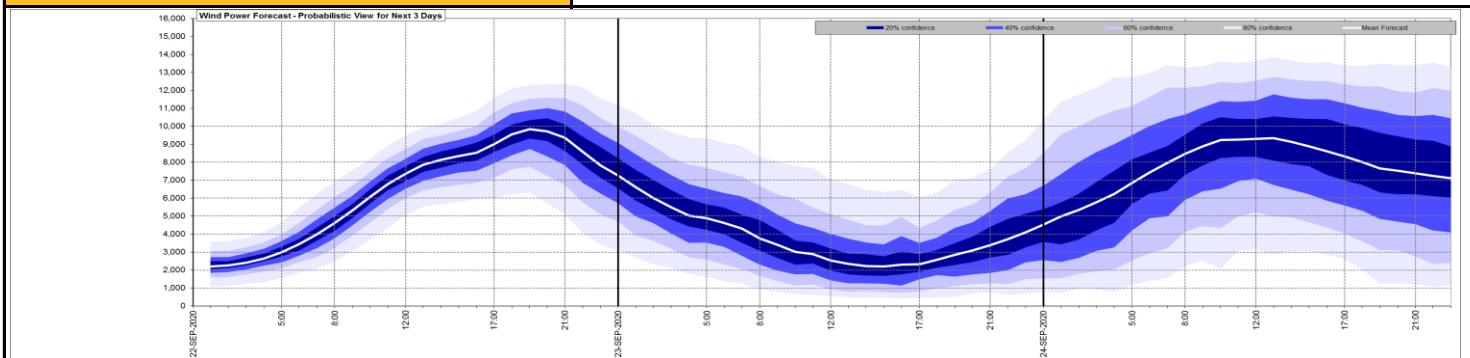


Yesterday's Market Summary	
<a href="#">Cash out price (Max)</a>	£69.00 (SP 17, 40)
<a href="#">Cash Out Price (Min)</a>	£2.00 (SP 13)
<a href="#">Peak Demand Yesterday</a>	34402 MW

**Interconnectors**  
**Net Transfer Capacity (MWs)**

Today	Import	Export	
Netherlands (BritNed)	0	0	Planned Outage
France (IFA)	2000	2000	Fully available
Belgium (Nemo)	0	0	Planned Outage
Ireland (EWIC)	530	530	Fully available
Northern Ireland (MOYLE)	500	500	Fully available

**Wind Power Forecast**

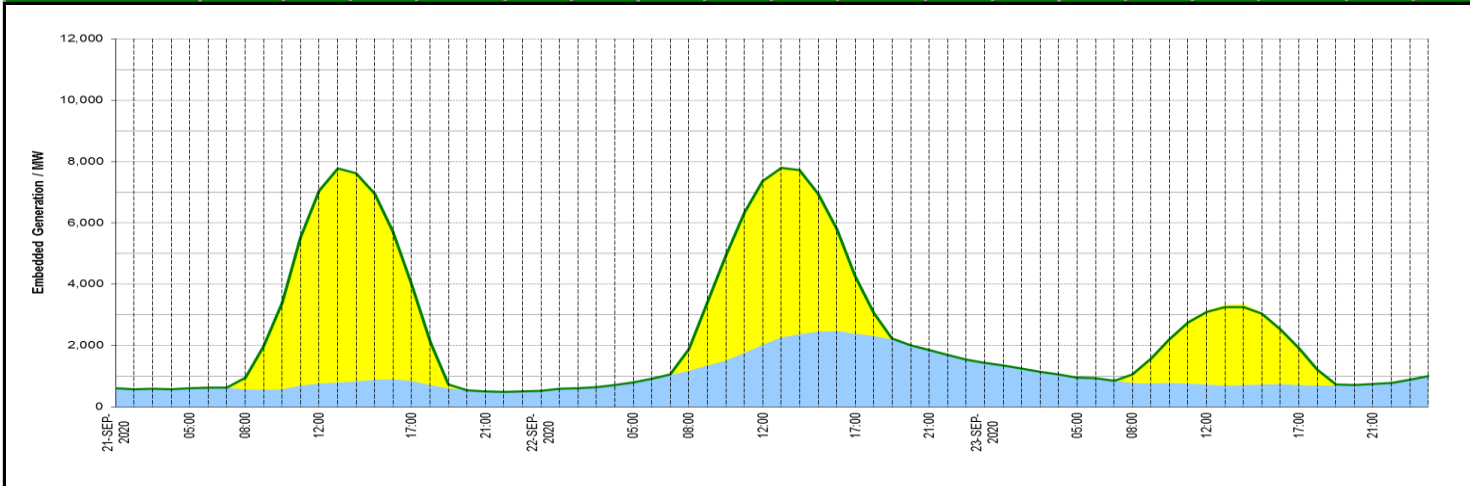


Key:

**Expected embedded generation (MWs)**

**Embedded Generation Forecast**

	21-SEP-2020					22-SEP-2020					23-SEP-2020						
	05:00	08:00	12:00	17:00	21:00	00:00	05:00	08:00	12:00	17:00	21:00	00:00	05:00	08:00	12:00	17:00	21:00
<b>Solar (MW)</b>	0	387	6280	3150	0	0	0	683	5360	1946	0	0	0	279	2425	1163	0
<b>Wind (MW)</b>	619	574	770	854	510	529	805	1188	2023	2385	1872	1472	959	786	726	718	738
<b>STOR (MW)</b>	0	0	0	0	0	0	0	0	0	0	0	0	0	0	0	0	0
<b>Total (MW)</b>	<b>619</b>	<b>961</b>	<b>7050</b>	<b>4004</b>	<b>510</b>	<b>530</b>	<b>806</b>	<b>1889</b>	<b>7371</b>	<b>4269</b>	<b>1851</b>	<b>1433</b>	<b>959</b>	<b>1058</b>	<b>3104</b>	<b>1901</b>	<b>745</b>



Weather	Source	Commentary
<p>Latest forecast (Summary)</p>	<p><a href="#">Met Office</a> <a href="#">SEPA</a> <a href="#">Natural Resources Wales</a></p>	<p><b>Today:</b> Mainly dry and fine across much of the UK and locally warm again across the southeast. Some showery rain later across western areas. However, a band of rain will move across Scotland and Northern Ireland with some strong winds.</p>
		<p><b>Tonight:</b> Rain band continuing southeast, with some showery rain ahead of it across central and eastern England. Turning colder in the northwest with rural frost under clearing skies.</p>
<p>General Weather Concerns  e.g. wind, rain, snow, flooding, GB Weather Warnings</p>	<p><a href="#">Met Office Weather Warnings</a>  <a href="#">SEPA</a> <a href="#">Natural Resources Wales</a></p>	<p><b>Weather Warnings:</b>  No weather warnings are in force for the UK</p> <p><b>Flood Warnings:</b>  No flood warnings are currently in force in England.  No flood warnings are currently in force in Scotland  No flood warnings are currently in force in Wales</p>
Further Information		
<p>BM Reports</p>	<p><a href="https://www.bmreports.com">https://www.bmreports.com</a></p>	
<p>System Balancing Reports</p>	<p><a href="https://www.nationalgrideso.com/balancing-data/system-balancing-reports">https://www.nationalgrideso.com/balancing-data/system-balancing-reports</a></p>	
<p>Forecast Volumes and Costs</p>	<p><a href="https://www.nationalgrideso.com/balancing-data/forecast-volumes-and-costs">https://www.nationalgrideso.com/balancing-data/forecast-volumes-and-costs</a></p>	
<p>NGESO Insights</p>	<p><a href="https://www.nationalgrideso.com/insights">https://www.nationalgrideso.com/insights</a></p>	