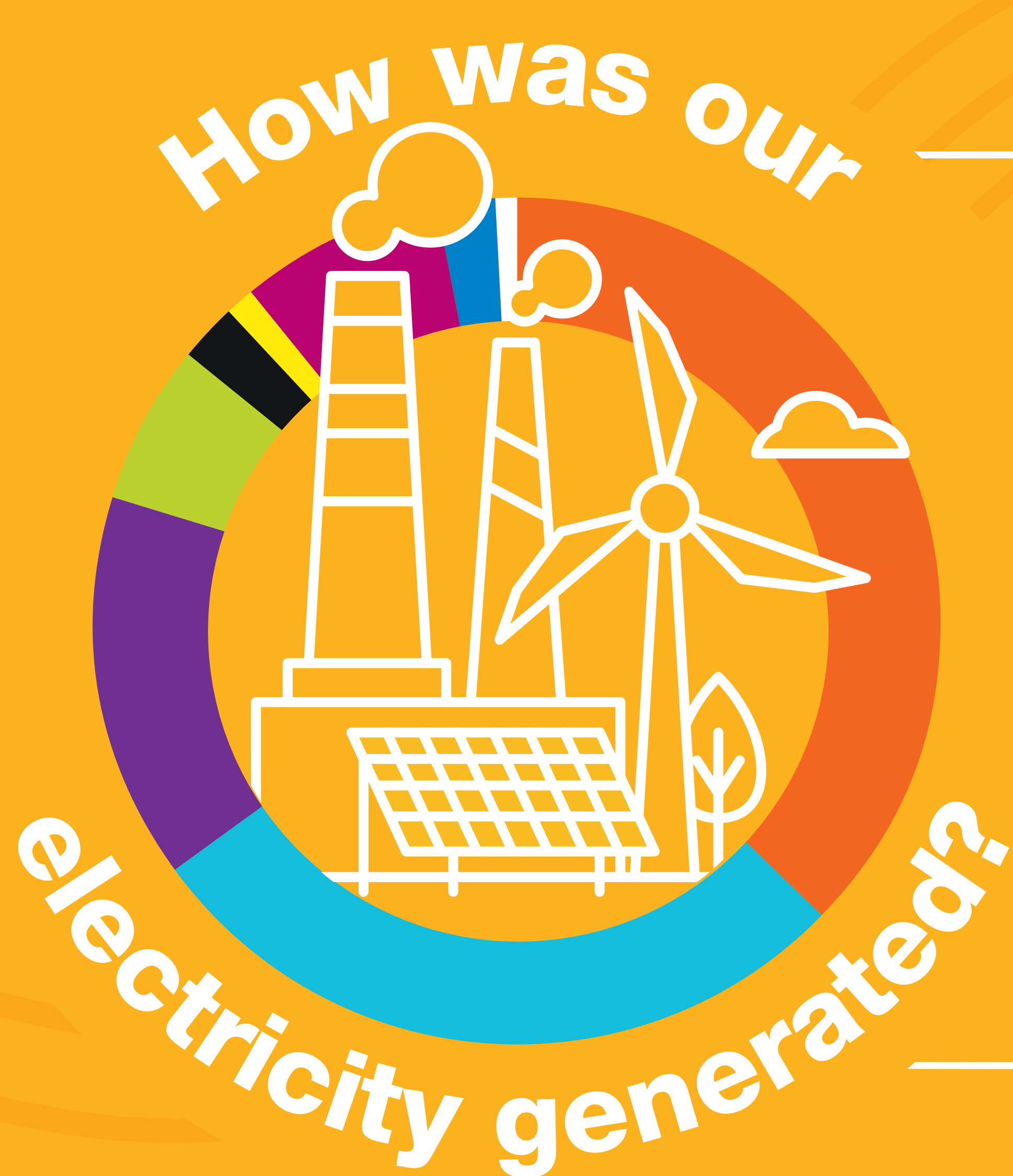


# Britain's Electricity Explained: August 2020

nationalgridESO



● Gas	43%
● Wind	19%
● Nuclear	15%
● Biomass	6%
● Coal	0.4%
● Solar	6.0%
● Imports	8.0%
● Hydro	2%
● Storage	1%

## Zero carbon



**42%** of electricity came from zero carbon sources  
**76.1%** peak zero carbon share

## Carbon intensity



**204** gCO<sub>2</sub>/kWh average



Greenest time of the month  
 1.00pm on 22nd August

## Coal



**0.4%** use this month

This time **5 years ago** coal usage was **17%**

**278.5** coal free hours

## Imports & exports

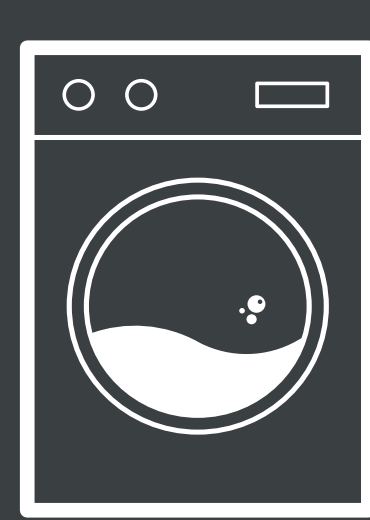


Energy in  
**3291 GWh**



Energy out  
**190 GWh**

## Demand



**20 TWh** run through network (that's 20 billion washing machine cycles).  
 Peak demand time was 4.30pm on 22nd August.

## View in real-time



To view our data in real-time, please download the ESO app for Apple or Android.  
 Or visit [carbonintensity.org.uk](https://carbonintensity.org.uk)