

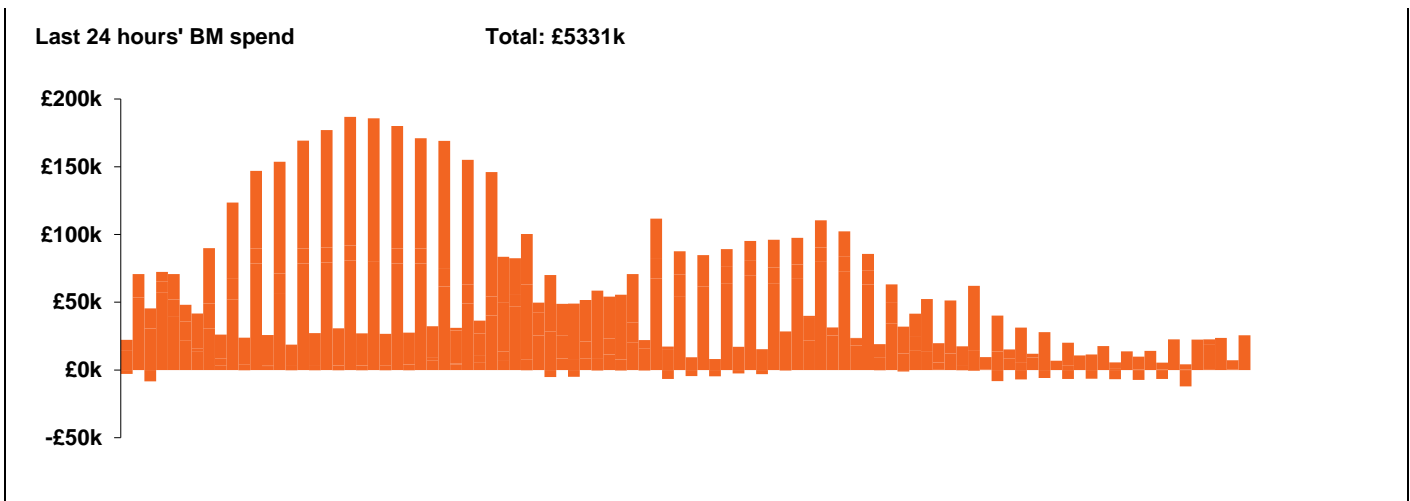
**National Electricity  
Transmission System Status Report**



**National Electricity Transmission System Status Report**  
Monday 22 June 2020

Today's High Level Risk Status Forecast for the next 24h			
General Status		Voltage	
Demand		System Inertia	
System Margins		Weather	
Generation		Transmission	
Active Constraints			

<a href="#">Today's Minimum De-Rated Margin</a>	14864 (SP 16)	
<a href="#">System Warnings</a>	None	
Current BMU Largest Loss Risk	Generation	1000 MW
	Demand	560 MW

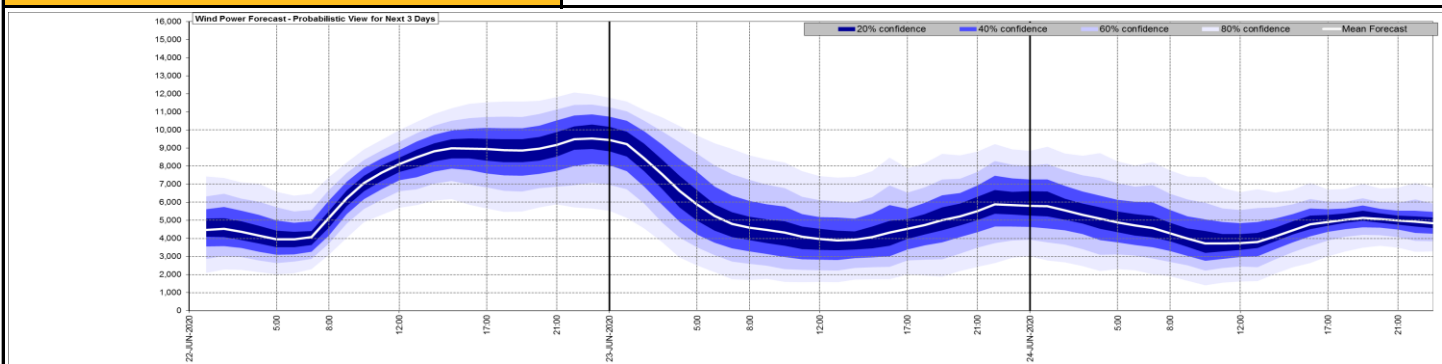


Yesterday's Market Summary	
<a href="#">Cash out price (Max)</a>	£45.94 (SP 3)
<a href="#">Cash Out Price (Min)</a>	£16.00 (SP 17, 30-32)
<a href="#">Peak Demand Yesterday</a>	23549 MW

**Interconnectors**  
**Net Transfer Capacity (MWs)**

Today	Import	Export	
Netherlands (BritNed)	1100	1133	Fully available
France (IFA)	2000	2000	Fully available
Belgium (Nemo)	1013	1013	Fully Available
Ireland (EWIC)	500	530	Fully Available
Northern Ireland (MOYLE)	500	500	Fully Available

**Wind Power Forecast**

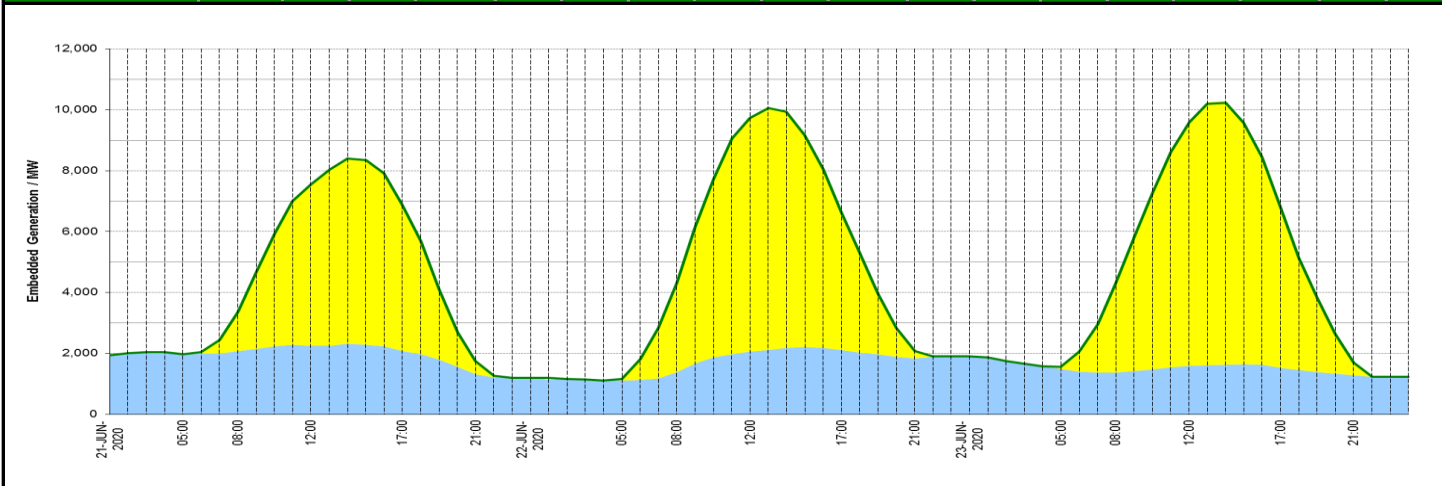


Key:

**Expected embedded generation (MWs)**

**Embedded Generation Forecast**

	21-JUN-2020					22-JUN-2020					23-JUN-2020						
	05:00	08:00	12:00	17:00	21:00	00:00	05:00	08:00	12:00	17:00	21:00	00:00	05:00	08:00	12:00	17:00	21:00
Solar (MW)	2	1300	5310	4780	434	0	59	2924	7666	4507	201	0	43	2886	8055	5240	418
Wind (MW)	1974	2081	2247	2074	1313	1201	1107	1387	2062	2108	1842	1922	1484	1369	1587	1532	1282
STOR (MW)	0	0	0	0	0	0	0	0	0	0	0	0	0	0	0	0	0
<b>Total (MW)</b>	<b>1976</b>	<b>3381</b>	<b>7557</b>	<b>6854</b>	<b>1747</b>	<b>1201</b>	<b>1171</b>	<b>4318</b>	<b>9724</b>	<b>6635</b>	<b>2076</b>	<b>1910</b>	<b>1553</b>	<b>4302</b>	<b>9595</b>	<b>6771</b>	<b>1700</b>



Weather	Source	Commentary
Latest forecast (Summary)	<a href="#">Met Office</a> <a href="#">SEPA</a> <a href="#">Natural Resources Wales</a>	<b>Today:</b> Northern Ireland and Scotland will be windy with some rain at times, especially for hilly western areas later. Some of this damp, breezy weather brushes northwestern parts of both England and Wales but elsewhere mainly sunny and warm.
		<b>Tonight:</b> Northwestern parts will be largely cloudy and mild, with occasional rain or drizzle, while much of the south and east remains mostly clear. Perhaps a little chilly by dawn.
General Weather Concerns  e.g. wind, rain, snow, flooding, GB Weather Warnings	<a href="#">Met Office Weather Warnings</a> <a href="#">SEPA</a> <a href="#">Natural Resources Wales</a>	<b>UK Weather Warnings</b> No weather warnings are in force for the UK   <b>UK Flood Warnings:</b> No Flood Warnings in force for the UK

*Contains public sector information licensed under the Open Government Licence v1.0*

Further Information	
BM Reports	<a href="https://www.bmreports.com">https://www.bmreports.com</a>
System Balancing Reports	<a href="https://www.nationalgrideso.com/balancing-data/system-balancing-reports">https://www.nationalgrideso.com/balancing-data/system-balancing-reports</a>
Forecast Volumes and Costs	<a href="https://www.nationalgrideso.com/balancing-data/forecast-volumes-and-costs">https://www.nationalgrideso.com/balancing-data/forecast-volumes-and-costs</a>
NGESO Insights	<a href="https://www.nationalgrideso.com/insights">https://www.nationalgrideso.com/insights</a>