

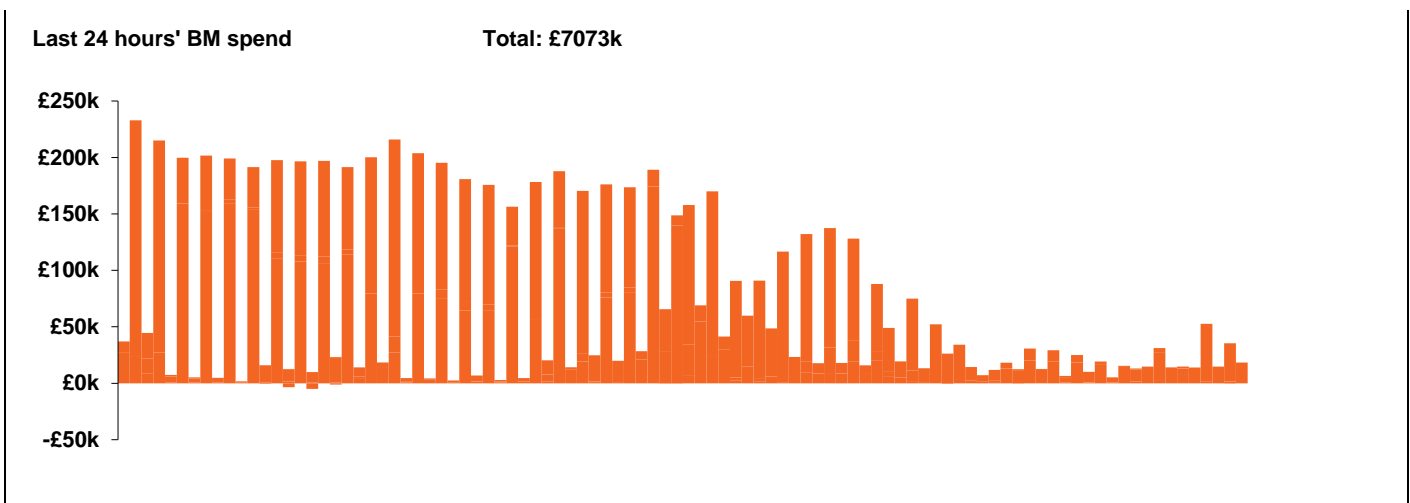
**National Electricity
Transmission System Status Report**



National Electricity Transmission System Status Report
Monday 25 May 2020

Today's High Level Risk Status Forecast for the next 24h			
General Status		Voltage	
Demand		System Inertia	
System Margins		Weather	
Generation		Transmission	
Active Constraints			

Today's Minimum De-Rated Margin	12604.87 (SP 45)	
System Warnings	None	
Current BMU Largest Loss Risk	Generation	800 MW
	Demand	560 MW

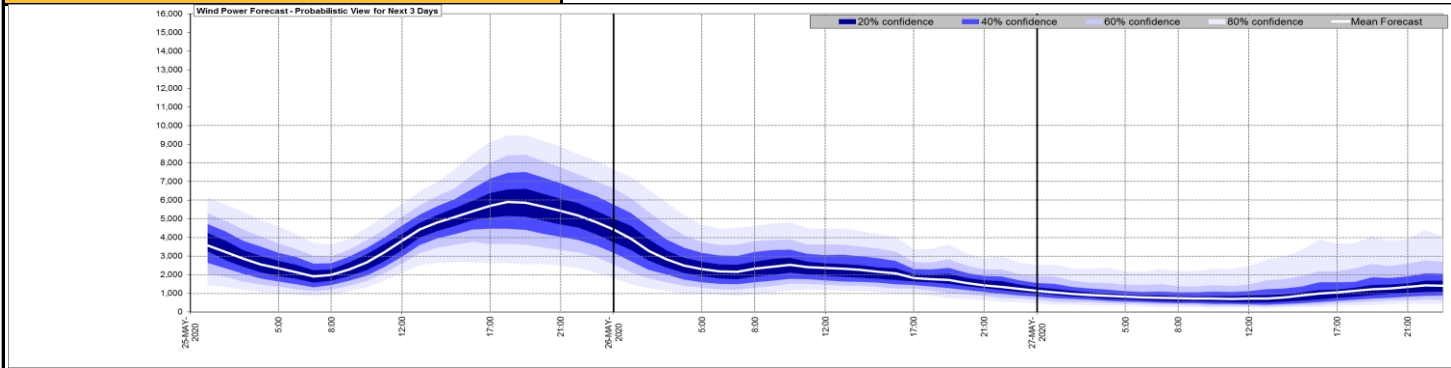


Yesterday's Market Summary	
Cash out price (Max)	£54.50/MWh (SP 1,36,45,48)
Cash Out Price (Min)	-£65.94/MWh (SP 24)
Peak Demand Yesterday	24,511 MW

**Interconnectors
Net Transfer Capacity (MWs)**

Today	Import	Export	
Netherlands (BritNed)	1100	1133	Fully available
France (IFA)	2000	2000	Fully available
Belgium (Nemo)	1013	1013	Fully Available
Ireland (EWIC)	500	530	Fully Available
Northern Ireland (MOYLE)	500	500	Fully Available

Wind Power Forecast



Key:

Expected embedded generation (MWs)

Embedded Generation Forecast

	24-MAY-2020					25-MAY-2020					26-MAY-2020						
	05:00	08:00	12:00	17:00	21:00	00:00	05:00	08:00	12:00	17:00	21:00	00:00	05:00	08:00	12:00	17:00	21:00
Solar (MW)	0	1430	5390	4980	96	0	0	2929	8803	5093	61	0	0	2162	6153	3679	58
Wind (MW)	2525	2569	2706	2176	1014	849	619	604	1309	1773	1235	1016	788	778	869	845	549
STOR (MW)	0	0	0	0	0	0	0	0	0	0	0	0	0	0	0	0	0
Total (MW)	2525	3999	8096	7156	1110	849	619	3533	10112	6866	1296	1016	788	2940	7022	4524	607

